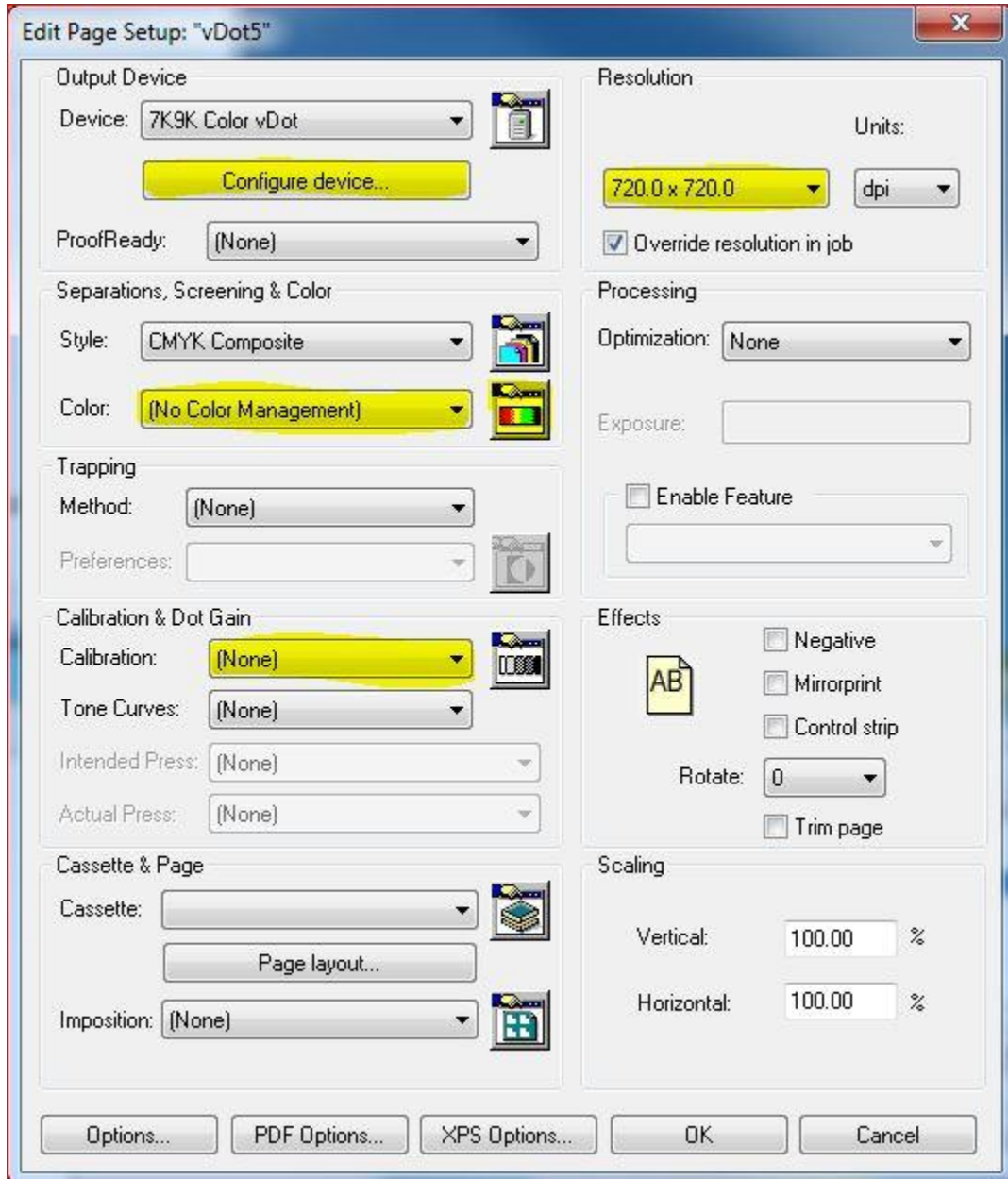


March 16, 2017.

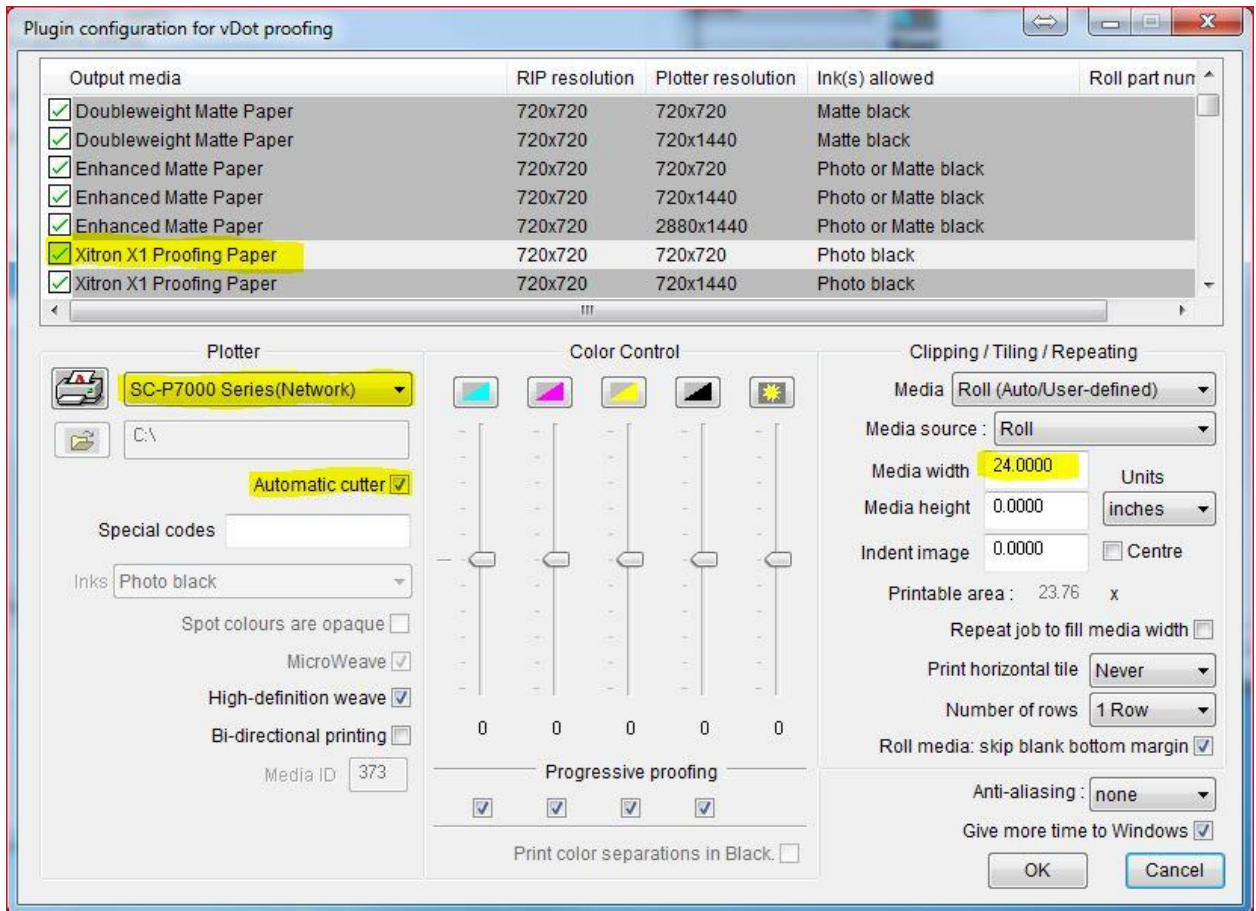
Xitron.

Proper ColorPro Settings for Epson vDot 5:

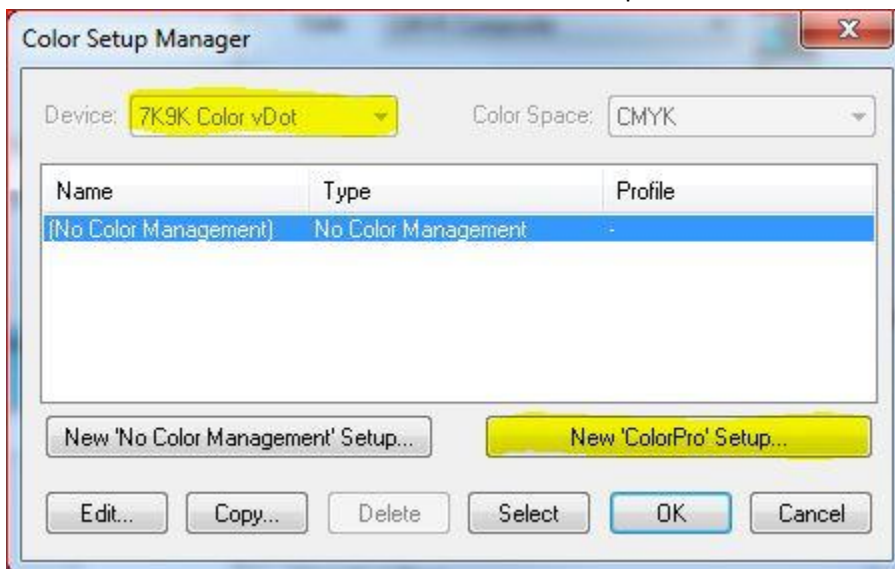
1. Open the Navigator RIP and create a Page Setup as follows.



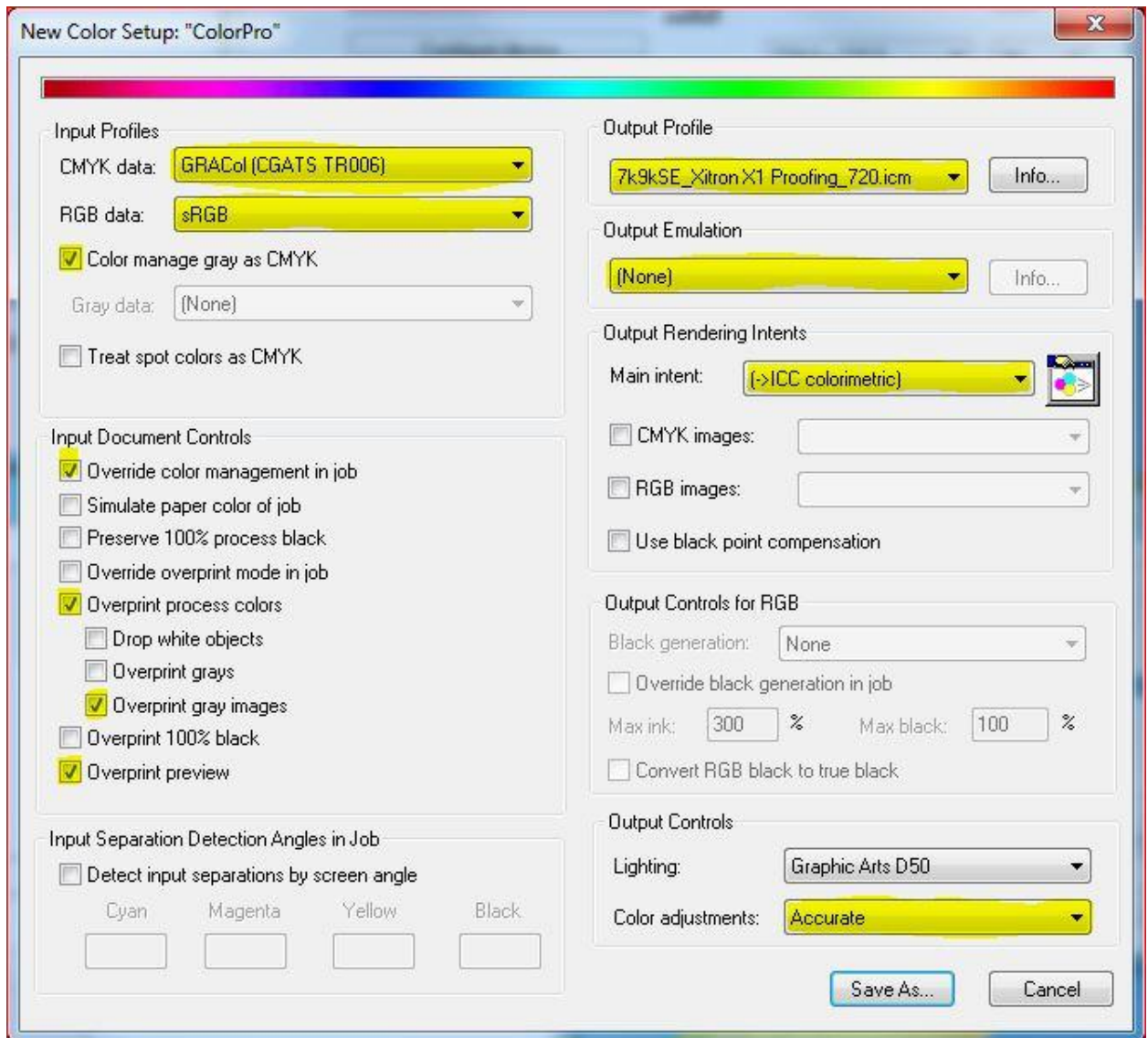
- In the Configure Device button, select the Stock, Plotter, Automatic Cutter, and Media Width.



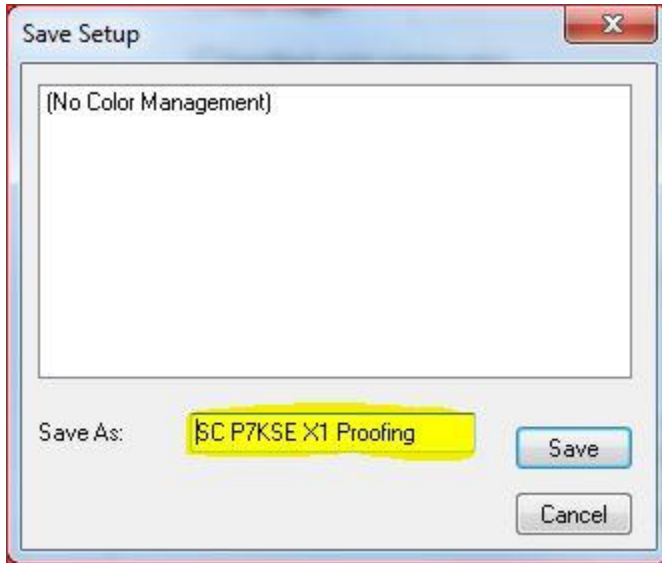
- Now click on the Icon next to Color (Separations, Screenings & Color), to create a new ColorPro. Select the Device and then click New 'ColorPro' Setup...



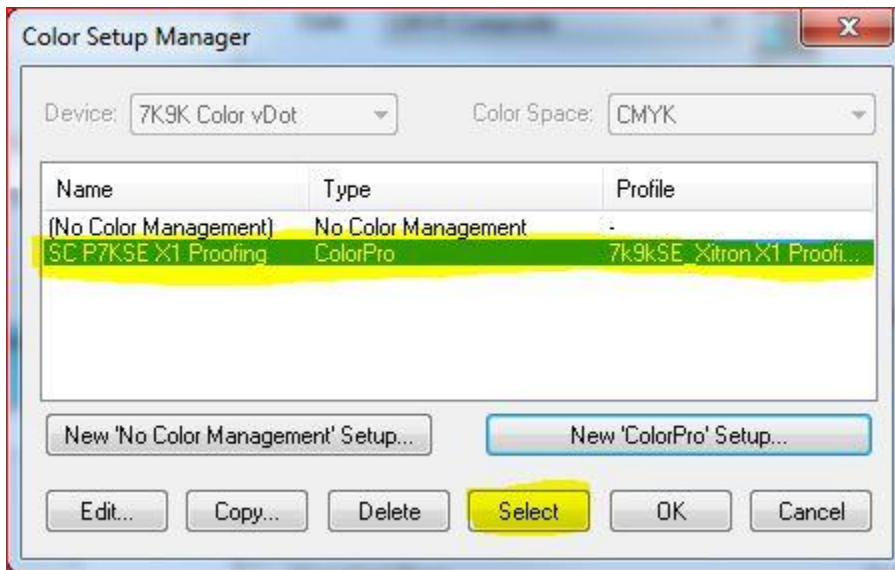
4. Configure as below.



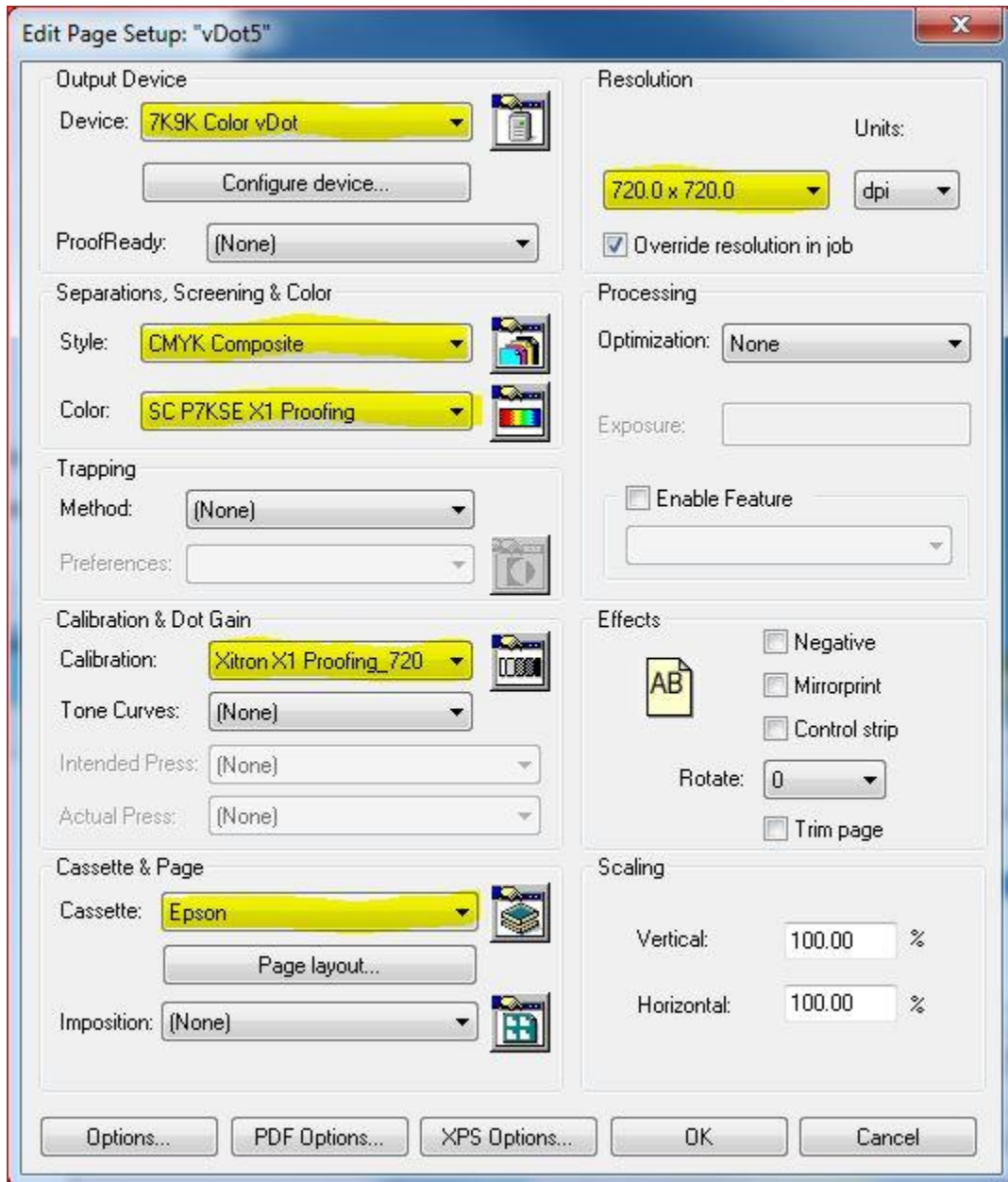
5. Save as... Name appropriately.



6. Once saved, select the ColorPro that you just created and click on the Select button.

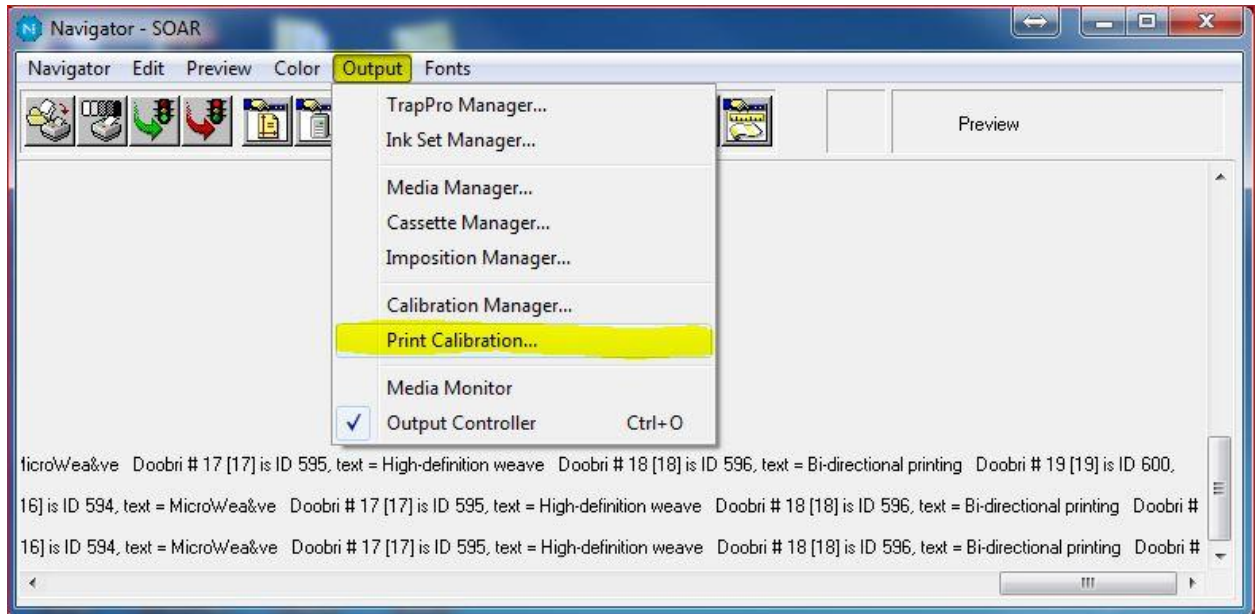


7. Your Page Setup will now look similar to the following Screen shot.

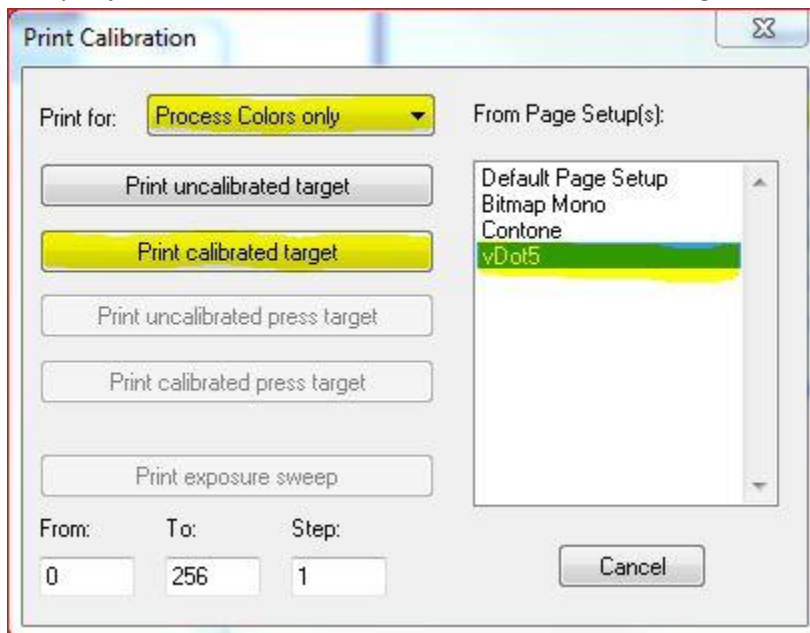




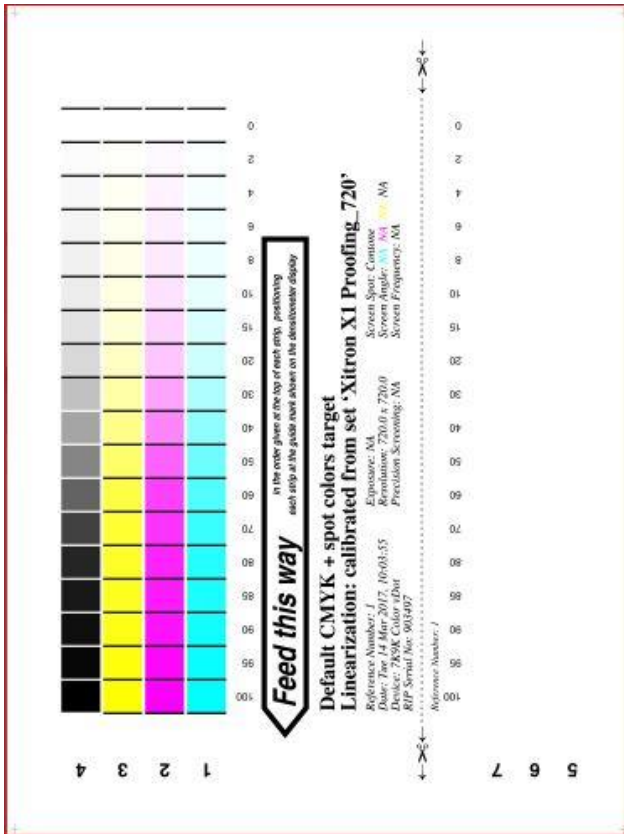
8. Now that you have the Page Setup created, you will now Print the Calibration. From the Output menu Select Print Calibration.



9. The Print calibration window will open. Select Process Colors Only, select the vDot 5 Page Setup that you just created, and then click on Print calibrated target.

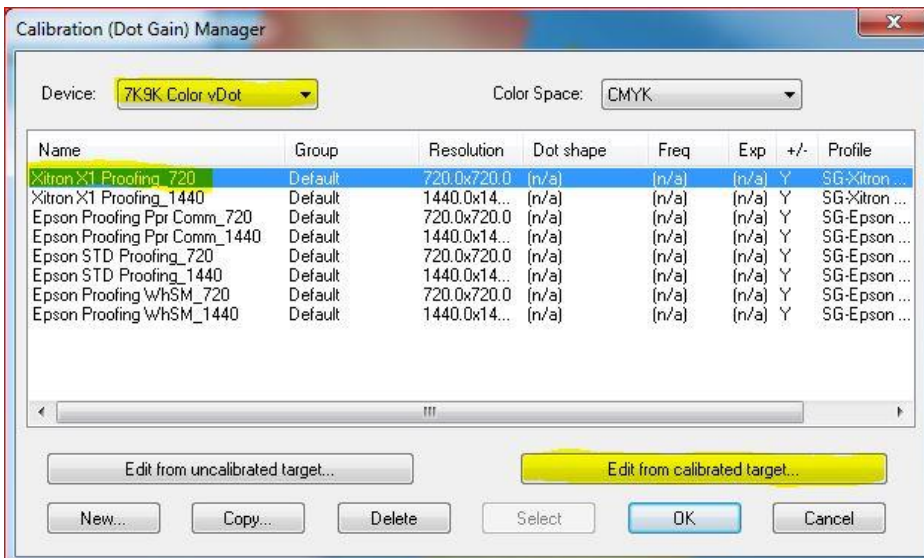


10. The Epson will output the following chart.

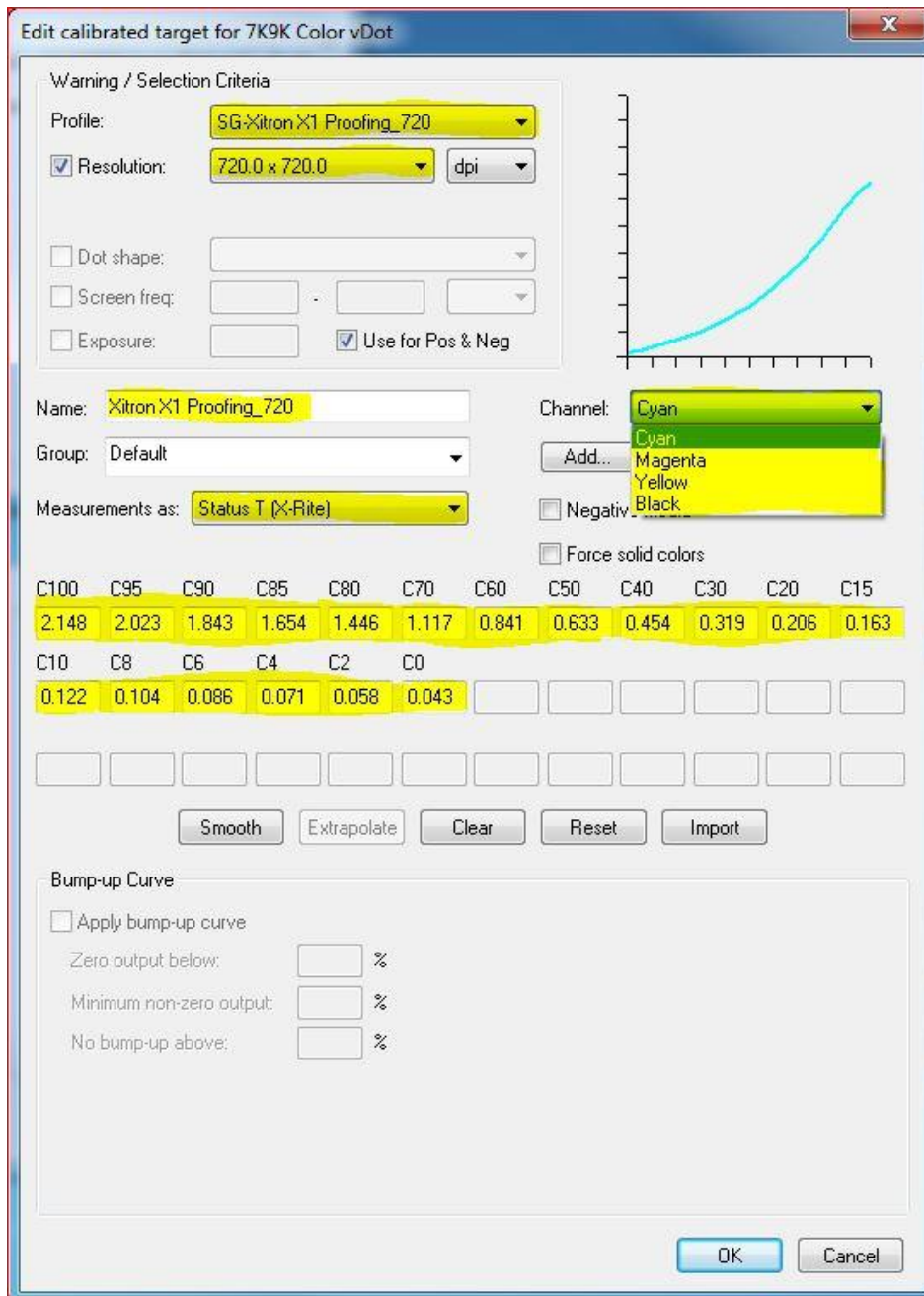


11. Once the Chart is finished printing on the Epson, use the Spectrophotometer to read the Status-T each swatch. Either use the GenLin utility or simply write down the results.

12. You will now edit the Calibration file you used in the Page Setup. Open the Page Setup and Select then Icon next to Calibration (Calibration & Dot Gain). Select the Calibration and click on Edit from calibrated target...



13. The Calibration will open. Make sure that it has the correct Profile, Resolution, and Name. Make sure 'Measurement as' is set to Status-T (X-Rite). Now either input the measurements from the chart for each color or (if you used the GenLin utility) click "Import" and choose your readings. When done click 'OK.'



14. This will take you back to the Page Setup window. Now Click 'OK' to save and close the Page Setup.