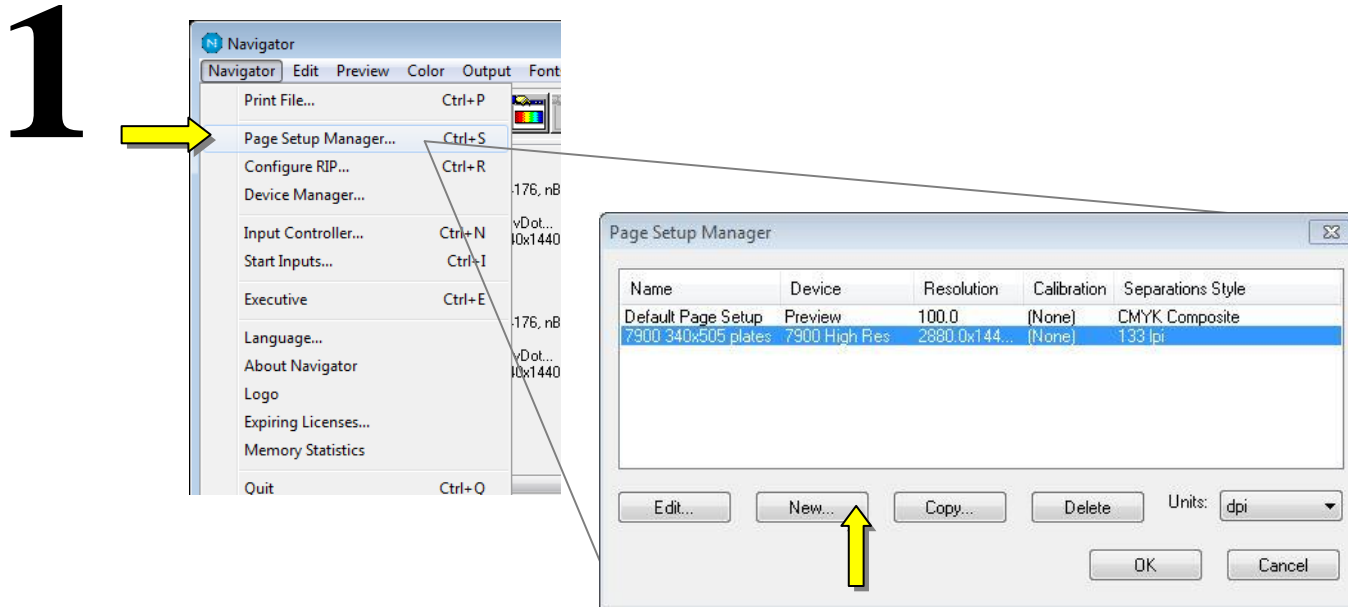


Inkjet Direct Quick Start Guide – Epson 7900 with Epson plates

Inkjet Direct is a Harlequin RIP plug-in which controls the Epson Stylus Pro 7900 to output Epson metal plates. For more information on the Epson CTP system see [this web page](#). A Xitron RIP is capable of driving all of the devices in a print shop with one centralized workflow.

This guide will help you to output your first plate. Please note that this guide is for Epson plates with the Epson 7900. This system uses standard Epson inks and is therefore also suitable for proofing. Separately available Xitron plug-ins will drive Epson Stylus Pro inkjet printers as contract proofers. *Note:* use the cyan ink channel to image the Epson plates.

Refer to the [Inkjet Direct Installer Guide](#) first. Your first step is to install the Epson driver that came with the printer. Your next step is to install the RIP and/or Inkjet direct plug-in. These steps are covered in the installer guide. Once complete you can proceed with this quick start guide. More information on using a Navigator RIP and Workflow are [here](#).



2

Edit Page Setup: "7900 LR Test"

Output Device: Device: 7900 High Res [Configure device...]

Resolution: 2880.0 x 1440.0 dpi [Override resolution in job]

Processing: Optimization: None

Exposure: []

Effects: Negative, Mirrorprint, Control strip, Rotate: 0, Trim page

Scaling: Vertical: 100.00 %, Horizontal: 100.00 %

Calibration & Dot Gain: Calibration: Epson, Tone Curves: (None), Intended Press: (None), Actual Press: (None)

Cassette & Page: Cassette: [], Page layout... [], Imposition: (None)

Options... PDF Options... XPS Options... OK Cancel

Xitron Inkjet Direct plugin configuration - 7900 High Res

Plotter: Epson 7900

Media: X offset (inches): 0.0000, Y offset (inches): 0.0000, Platen Gap: 4, Media ID: 142, Media thickness (x 0.1mm): 2, Paper tray: Manual feed [Auto cut]

Inkset: Photo black + Light black

Dot Size: []

Bi-directional

Vacuum: Use default vacuum, Min: 1, Max: []

Imaging: Primary channel color: Cyan, Secondary channel color: None, Ink coverage limit: Limit to 35%, Unlimited

Cancel OK

Page Layout

Device Width [DW]: 609.60
Device Length [DL]: 1524.00

Media Size: Other

Media Width [MW]: 340.00
Media Length [ML]: 505.00

Top Margin [TM]: 25.40
Bottom Margin [BM]: 200.20
Left Margin [LM]: 62.05
Right Margin [RM]: 62.05

Select units: millimeters

Page size: US Letter
Page width: 8.50 inches
Page height: 11.00

Center page on Media Width [checked]
Center page on Media Length []

OK Cancel

Plate dimensions

Position adjustments

Good Epson plate calibration numbers

Edit uncalibrated target for 9800

Warning Criteria: Profile: [], Resolution: [], Dot shape: [], Screen freq: [], Exposure: [], Use for Pos & Neg

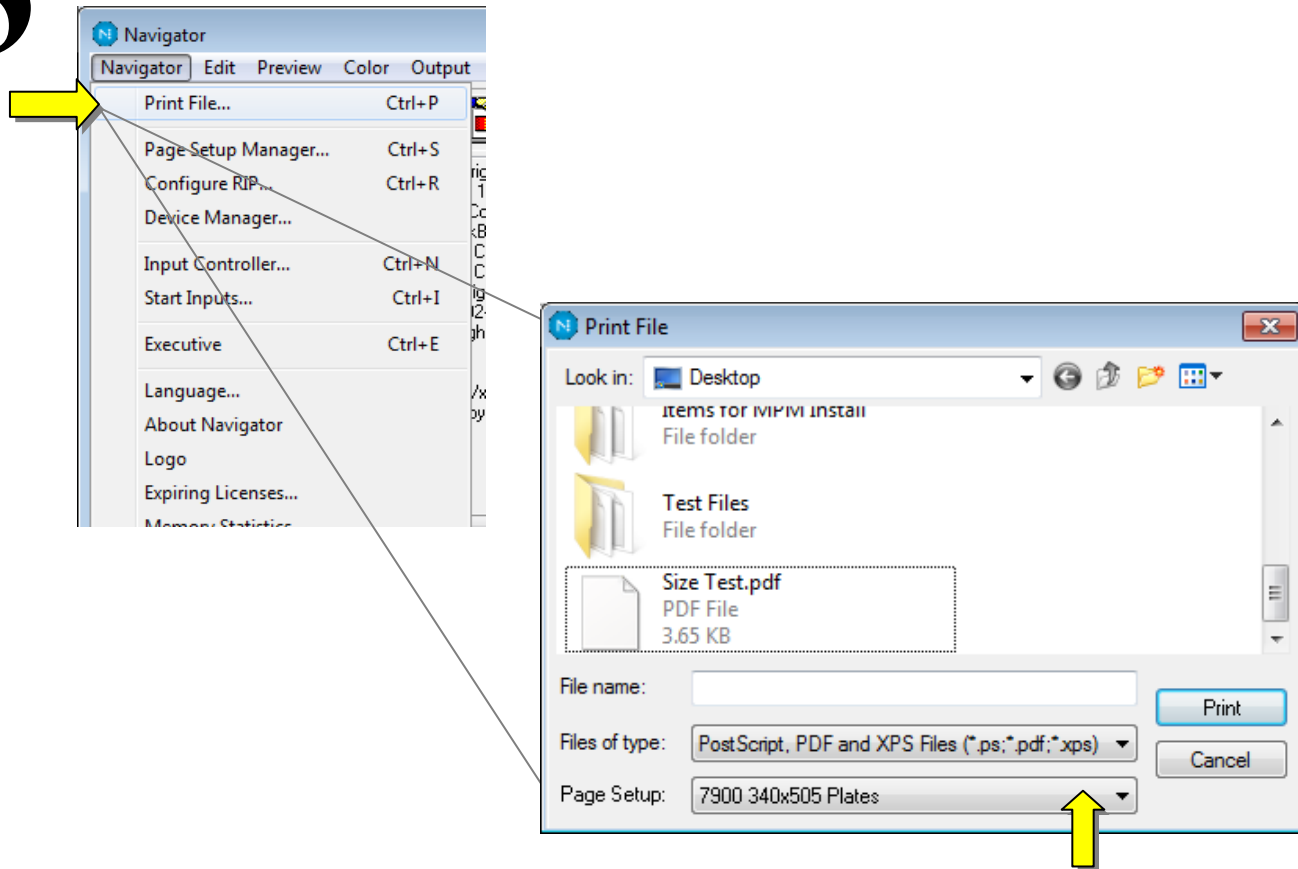
Name: Epson, Channel: Gray

Measurements as: Positive % Dot, Negative media, Force solid colors

0.0	2.0	4.0	6.0	8.0	10.0	15.0	20.0	30.0	40.0	45.0	50.0
0.00	7.00	9.90	12.98	15.74	18.20	24.89	31.00	42.94	54.06	60.00	65.89
55.0	60.0	70.0	80.0	85.0	90.0	92.0	94.0	96.0	98.0	100.0	
70.89	74.06	83.83	90.00	93.00	95.94	97.00	98.06	99.03	99.60	100.00	

Smooth Extrapolate Clear Reset Import OK Cancel

3



Navigate to a file you wish to image on the plate, choose your page setup, and click print.

Now perhaps you would like to set up hot folders or Navigator Workflow to automate the submission of jobs to the correct page setup or page setups. Please see the appropriate manual in our [documentation library](#) or contact Xitron support at xitronhelp@xitron.com.