

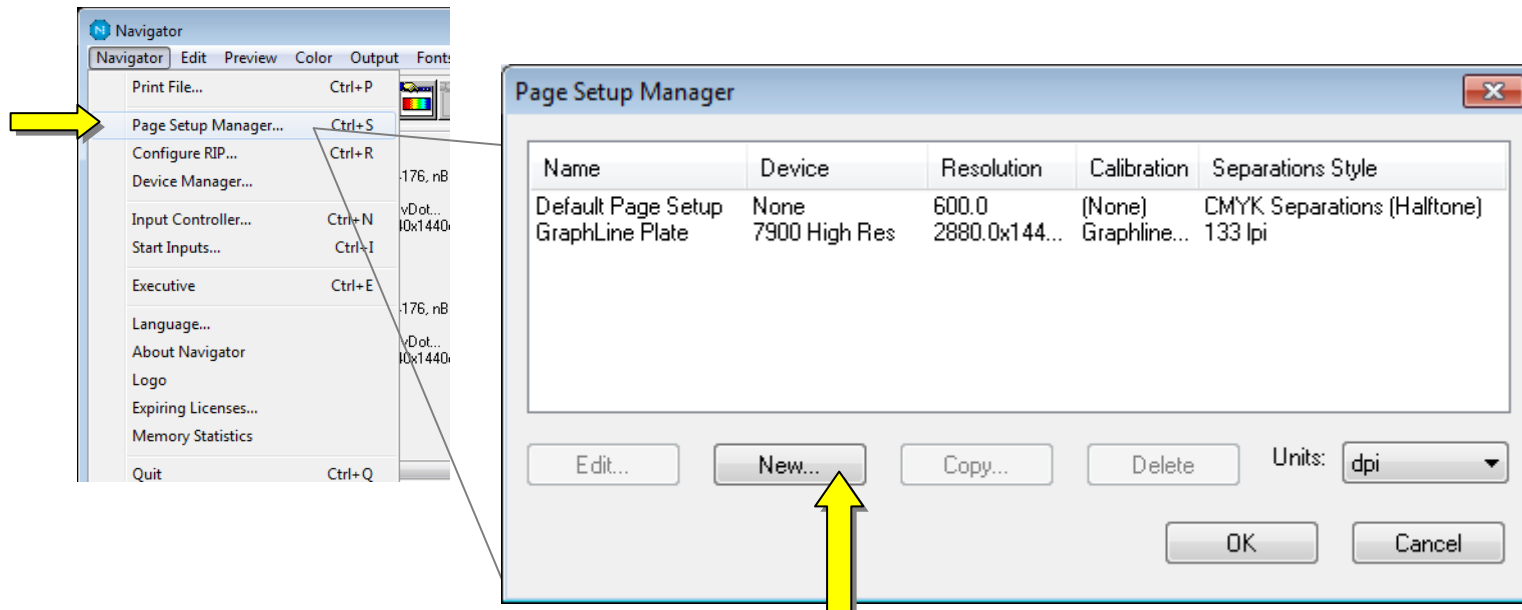
Inkjet Direct Quick Start Guide – Graphline TB100 plates

Inkjet Direct is a Harlequin RIP plug-in which controls the Epson Stylus Pro to output Graphline polyester plates. For more information on Graphline plates see www.graphline.com/. A Xitron RIP is capable of driving all of the devices in a print shop with one centralized workflow.

This guide will help you to output your first plate. Please note that this guide is for Graphline plates with an Epson Stylus Pro. This system uses standard Epson inks and is therefore also suitable for proofing. Separately available Xitron plug-ins will drive Epson Stylus Pro inkjet printers as contract proofers. *Note:* use the magenta ink channel to image the Graphline plates.

Refer to the [Inkjet Direct Installer Guide](#) first. Your first step is to install the Epson driver that came with the printer. Your next step is to install the RIP and/or Inkjet direct plug-in. These steps are covered in the installer guide. Once complete you can proceed with this quick start guide. More information on using a Navigator RIP and Workflow are [here](#).

1



2

Edit Page Setup: "GraphLine Plate"

Output Device
Device: 7900 High Res

Resolution
2880.0 x 1440.0 dpi

Units: dpi

Processing
Optimization: None

Effects
AB

Calibration & Dot Gain
Calibration: Graphline Plate

Cassette & Page
Cassette: []
Page layout...
Imposition: (None)

Options... PDF Options... XPS Options... OK Cancel

Xitron Inkjet Direct plugin configuration - 7900 High Res

Plotter
Epson 7900

Media
X offset (inches): 0.0000
Y offset (inches): 0.0000
Platen Gap: 4
Media ID: 142
Media thickness (x 0.1mm): 2
Paper tray: Manual feed

Ink
Photo black + Light black

Dot Size: UMD

Vacuum
Use default vacuum

Imaging
Primary channel color: Magenta
Secondary channel color: None
Ink coverage limit: Limit to 35%
Ink coverage limit: Unlimited

Cancel OK

Page Layout

Device Width [DW]: 24.00
Device Length [DL]: 60.00

Media Size: Other

Media Width [MW]: 13.19
Media Length [ML]: 19.09

Top Margin [TM]: 1.05
Bottom Margin [BM]: 1.05
Left Margin [LM]: 1.09
Right Margin [RM]: 1.09

Select units: inches

Page size: Tabloid
Page width: 11.00 inches
Page height: 17.00

OK Cancel

Plate dimensions

Position adjustments

Good Graphline plate calibration numbers

Edit uncalibrated target for 7900 High Res

Warning Criteria
Profile: []
Resolution: [] []
Dot shape: []
Screen freq: [] [] []
Exposure: [] [] Use for Pos & Neg

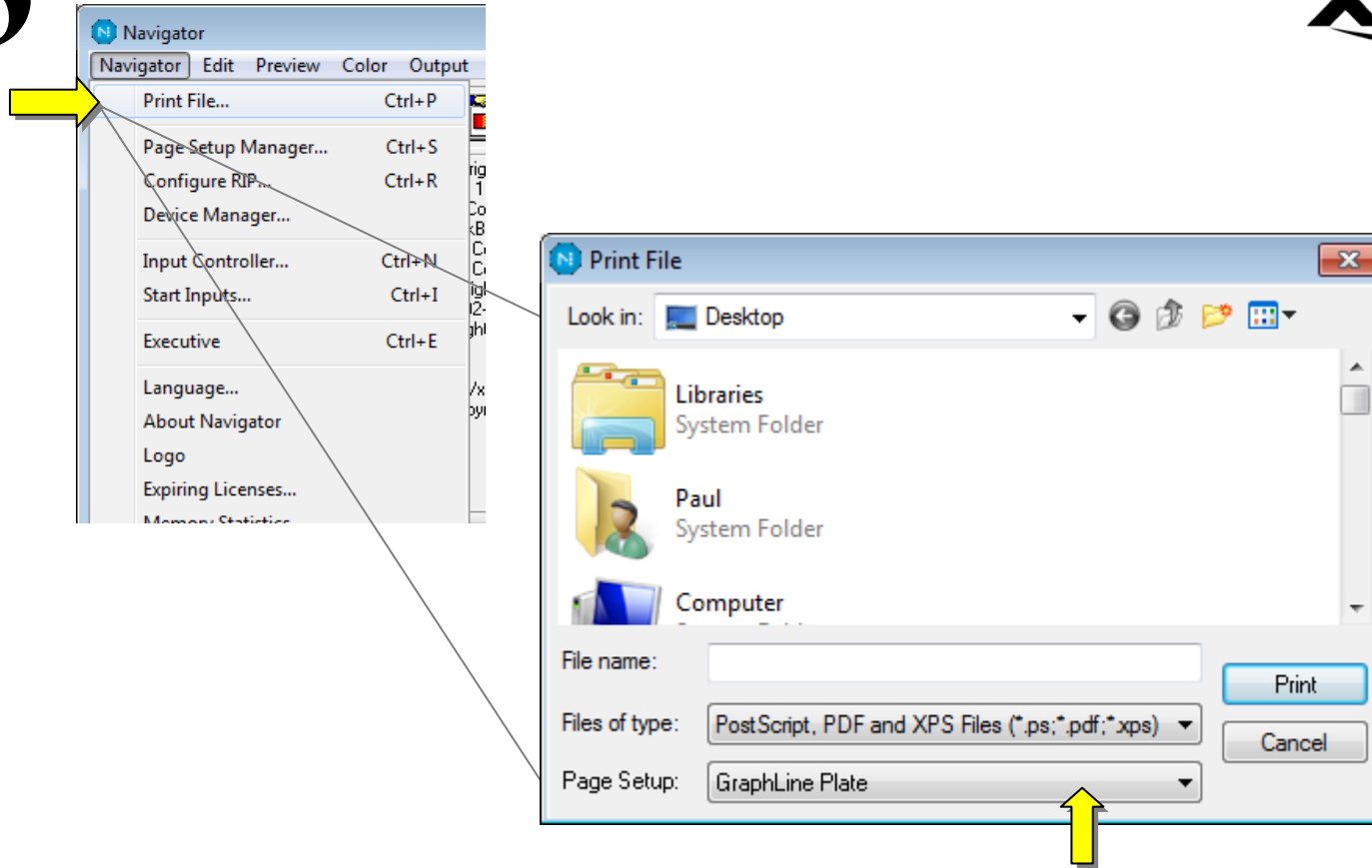
Name: Graphline Plate Channel: Gray

Measurements as: Positive % Dot Negative media Force solid colors

0.0	2.0	4.0	6.0	8.0	10.0	15.0	20.0	30.0	40.0	45.0	50.0
0.00	4.96	8.95	12.86	16.57	19.77	27.06	34.04	47.35	59.14	64.89	69.83
55.0	60.0	70.0	80.0	85.0	90.0	92.0	94.0	96.0	98.0	98.0	100.0
74.58	78.50	85.76	91.83	93.99	96.08	97.01	97.93	98.62	99.31	100.00	

Smooth Extrapolate Clear Reset Import OK Cancel

3



Navigate to a file you wish to image on the plate, choose your page setup, and click print.

Now perhaps you would like to set up hot folders or Navigator Workflow to automate the submission of jobs to the correct page setup or page setups. Please see the appropriate manual in our [documentation library](#) or contact Xitron support at xitronhelp@xitron.com.