

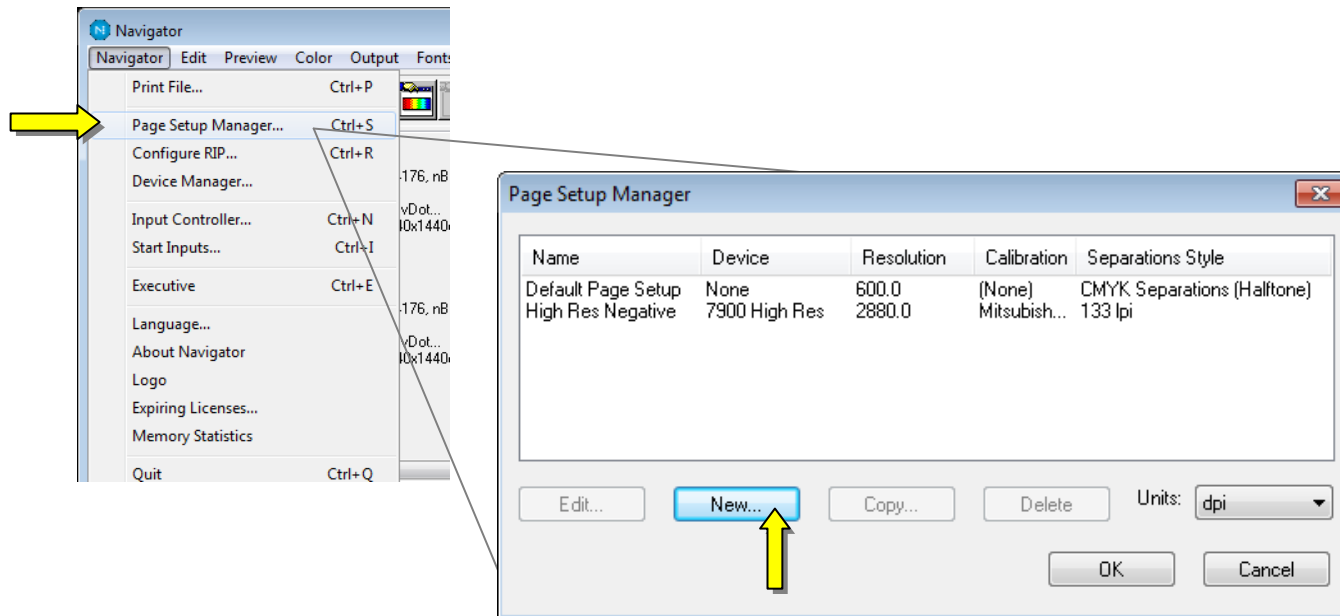
Inkjet Direct Quick Start Guide – Mitsubishi Clear Film 180 (High Resolution)

Inkjet Direct is a Harlequin RIP plug-in which controls the Epson Stylus Pro to output Mitsubishi film. You'll likely need a UV blocking ink. More information is contained in our [Inkjet Direct User Guide](#). A Xitron RIP is capable of driving all of the devices in a print shop with one centralized workflow.

This guide will help you to output your first separation. Note: This system does not use standard Epson inks. For more information on the specific ink used to derive the calibration numbers in this quick start guide, please see the User Guide or contact your Xitron dealer.

Refer to the [Inkjet Direct Installer Guide](#) first. Your first step is to install the Epson driver that came with the printer. Your next step is to install the RIP and/or Inkjet direct plug-in. These steps are covered in the installer guide. Once complete you can proceed with this quick start guide. More information on using a Navigator RIP and Workflow are [here](#).

1



2

Edit Page Setup: "High Res Negative"

Output Device
Device: 7900 High Res
Resolution: 2880.0 x 2880.0 dpi
Units: dpi
Override resolution in job:

Separations, Screening & Color
Style: 133 lpi
Color: (No Color Management)

Trapping
Method: (None)

Calibration & Dot Gain
Calibration: Mitsubishi Film
Tone Curves: (None)
Intended Press: (None)
Actual Press: (None)

Cassette & Page
Cassette:
Page layout...
Imposition: (None)

Effects
 Negative
 Mirrorprint
 Control strip
Rotate: 0
 Trim page

Scaling
Vertical: 100.00 %
Horizontal: 100.00 %

Buttons: Options..., PDF Options..., XPS Options..., OK, Cancel

Xitron Inkjet Direct plugin configuration - 7900 High Res

Plotter
Epson 7900
C:\

Inkset: Photo black + Light black
Dot Size: UMD
 Bi-directional

Vacuum
 Use default vacuum
Min: 1 Max:

Media
X offset (inches): 0.0000
Y offset (inches): 0.0000
Platen Gap: 4
Media ID: 142
Media thickness (x 0.1mm): 2
Paper tray: Roll
 Auto cut

Imaging
Primary channel color: Green
Secondary channel color: None
Ink coverage limit: Limit to 50%
Ink coverage limit: Unlimited

Buttons: Cancel, OK

Page Layout

Device Width [DW]: 24.00
Device Length [DL]: 60.00

Media Size: ROLL Media (24in)
Media Width [MW]: 24.00
Media Length [ML]: 0.00

Top Margin [TM]: 0.00
Bottom Margin [BM]: -11.69
Left Margin [LM]: 7.87
Right Margin [RM]: 7.87

Select units: inches

Page size: A4
Page width: 8.27 inches
Page height: 11.69

Buttons: OK, Cancel

Film width
Position adjustments

Good Mitsubishi film calibration numbers

Edit uncalibrated target for 7900 High Res

Warning Criteria
Profile:
 Resolution:
 Dot shape:
 Screen freq:
 Exposure:
 Use for Pos & Neg

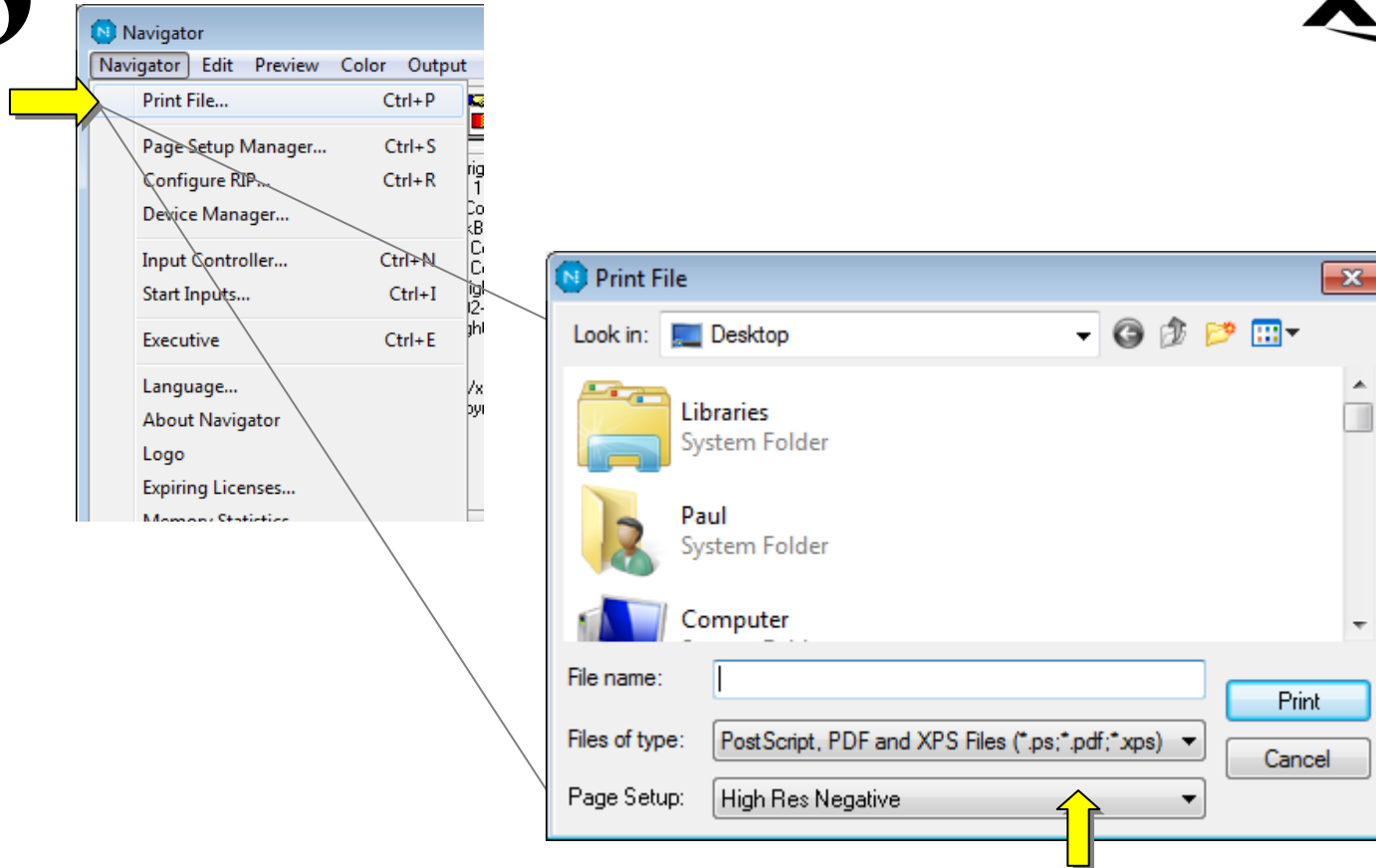
Name: Mitsubishi Film Channel: Gray
Add... Copy... Delete

Measurements as: Negative % Dot
 Negative media
 Force solid colors

0.0	2.0	4.0	6.0	8.0	10.0	15.0	20.0	30.0	40.0	45.0	50.0
0.00	0.30	0.60	0.90	1.21	1.51	2.26	4.84	10.06	17.21	21.02	25.01
55.0	60.0	70.0	80.0	85.0	90.0	92.0	94.0	96.0	98.0	100.0	
28.99	32.99	41.72	56.40	65.70	74.91	78.51	82.52	87.25	92.50	100.00	

Buttons: Smooth, Extrapolate, Clear, Reset, Import, OK, Cancel

3



Navigate to a file you wish to image on film, choose your page setup, and click print.

Now perhaps you would like to set up hot folders or Navigator Workflow to automate the submission of jobs to the correct page setup or page setups. Please see the appropriate manual in our [documentation library](#) or contact Xitron support at xitronhelp@xitron.com.