

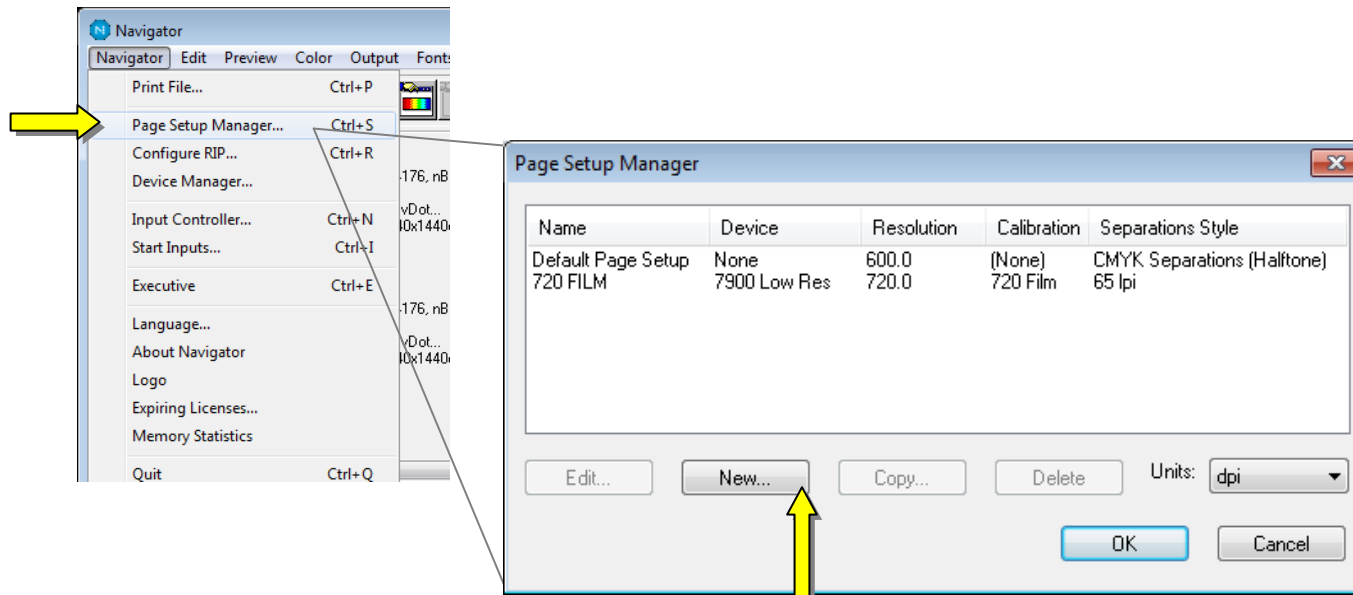
Inkjet Direct Quick Start Guide – Mitsubishi Clear Film 180 (Low Resolution)

Inkjet Direct is a Harlequin RIP plug-in which controls the Epson Stylus Pro to output Mitsubishi film. You'll likely need a UV blocking ink. More information is contained in our [Inkjet Direct User Guide](#). A Xitron RIP is capable of driving all of the devices in a print shop with one centralized workflow.

This guide will help you to output your first separation. Note: This system does not use standard Epson inks. For more information on the specific ink used to derive the calibration numbers in this quick start guide, please see the User Guide or contact your Xitron dealer.

Refer to the [Inkjet Direct Installer Guide](#) first. Your first step is to install the Epson driver that came with the printer. Your next step is to install the RIP and/or Inkjet direct plug-in. These steps are covered in the installer guide. Once complete you can proceed with this quick start guide. More information on using a Navigator RIP and Workflow are [here](#).

1



2

Edit Page Setup: "720 FILM"

Output Device
Device: 7900 Low Res
Resolution: 720.0 x 720.0 dpi
Units: dpi
 Override resolution in job

Separations, Screening & Color
Style: 65 lpi
Color: (No Color Management)

Trapping
Method: (None)

Calibration & Dot Gain
Calibration: 720 Film
Tone Curves: (None)
Intended Press: (None)
Actual Press: (None)

Cassette & Page
Cassette: [Blank]
Page layout...
Imposition: (None)

Effects
 Negative
 Mirrorprint
 Control strip
Rotate: 0
 Trim page

Scaling
Vertical: 100.00 %
Horizontal: 100.00 %

Buttons: Options..., PDF Options..., XPS Options..., OK, Cancel

Xitron Inkjet Direct plugin configuration - 7900 Low Res

Plotter
Epson 7900
C:\ [Blank]

Media
X offset (inches): 0.0000
Y offset (inches): 0.0000
Platen Gap: 4
Media ID: 142
Media thickness (x 0.1mm): 2
Paper tray: Roll
 Auto cut

Vacuum
 Use default vacuum
Min: 1 Max: [Slider]

Half-tones
Ink coverage adjustment: None
Halftone vDot size: Large dot

Imaging
Primary channel color: Green
Secondary channel color: 1 Orange, 2 None, 3 None, 4 None, 5 None

Buttons: Cancel, OK

Page Layout

Device Width [DW]: 24.00
Device Length [DL]: 60.00
Media Size: ROLL Media (24in)
Media Width [MW]: 24.00
Media Length [ML]: 0.00
Top Margin [TM]: 0.00
Bottom Margin [BM]: -11.69
Left Margin [LM]: 7.87
Right Margin [RM]: 7.87
Select units: inches

Center page on Media Width
 Center page on Media Length

Page size: A4
Page width: 8.27 inches
Page height: 11.69

Buttons: OK, Cancel

Edit uncalibrated target for 7900 Low Res

Warning Criteria
Profile: [Blank]
 Resolution: [Blank]
 Dot shape: [Blank]
 Screen freq: [Blank]
 Exposure: [Blank] Use for Pos & Neg

Name: 720 Film Channel: Gray
Add... Copy... Delete

Measurements as: Positive % Dot Negative media Force solid colors

0.0	2.0	4.0	6.0	8.0	10.0	15.0	20.0	30.0	40.0	45.0	50.0
0.00	6.24	9.06	12.21	15.28	18.16	24.73	31.34	42.89	54.12	59.89	65.72
55.0	60.0	70.0	80.0	85.0	90.0	92.0	94.0	96.0	98.0	100.0	
71.41	77.00	85.83	92.32	94.86	98.07	98.99	99.25	99.50	99.75	100.00	

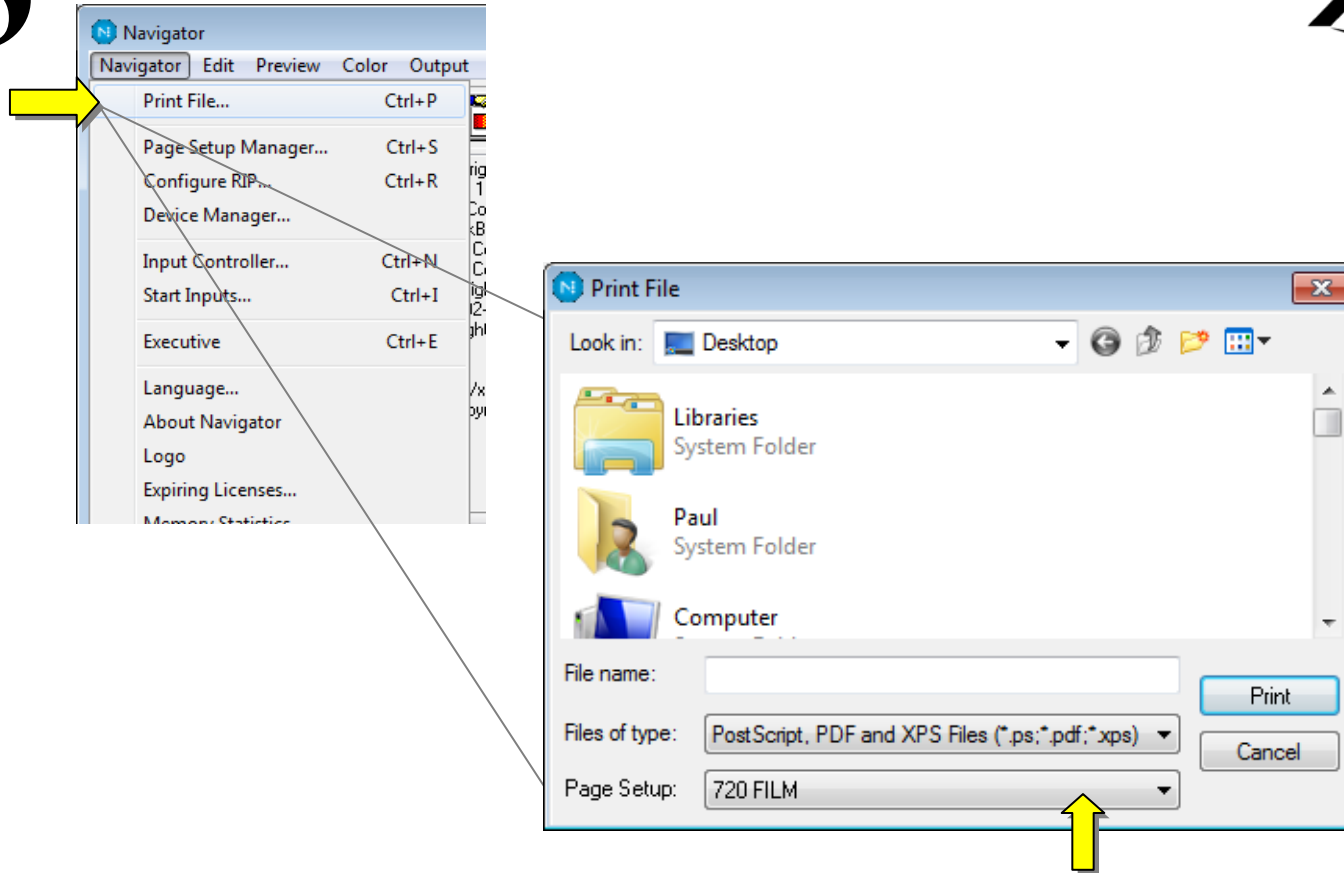
Buttons: Smooth, Extrapolate, Clear, Reset, Import, OK, Cancel

Film width

Position adjustments

Good Mitsubishi film calibration numbers

3



Navigate to a file you wish to image on film, choose your page setup, and click print.

Now perhaps you would like to set up hot folders or Navigator Workflow to automate the submission of jobs to the correct page setup or page setups. Please see the appropriate manual in our [documentation library](#) or contact Xitron support at xitronhelp@xitron.com.