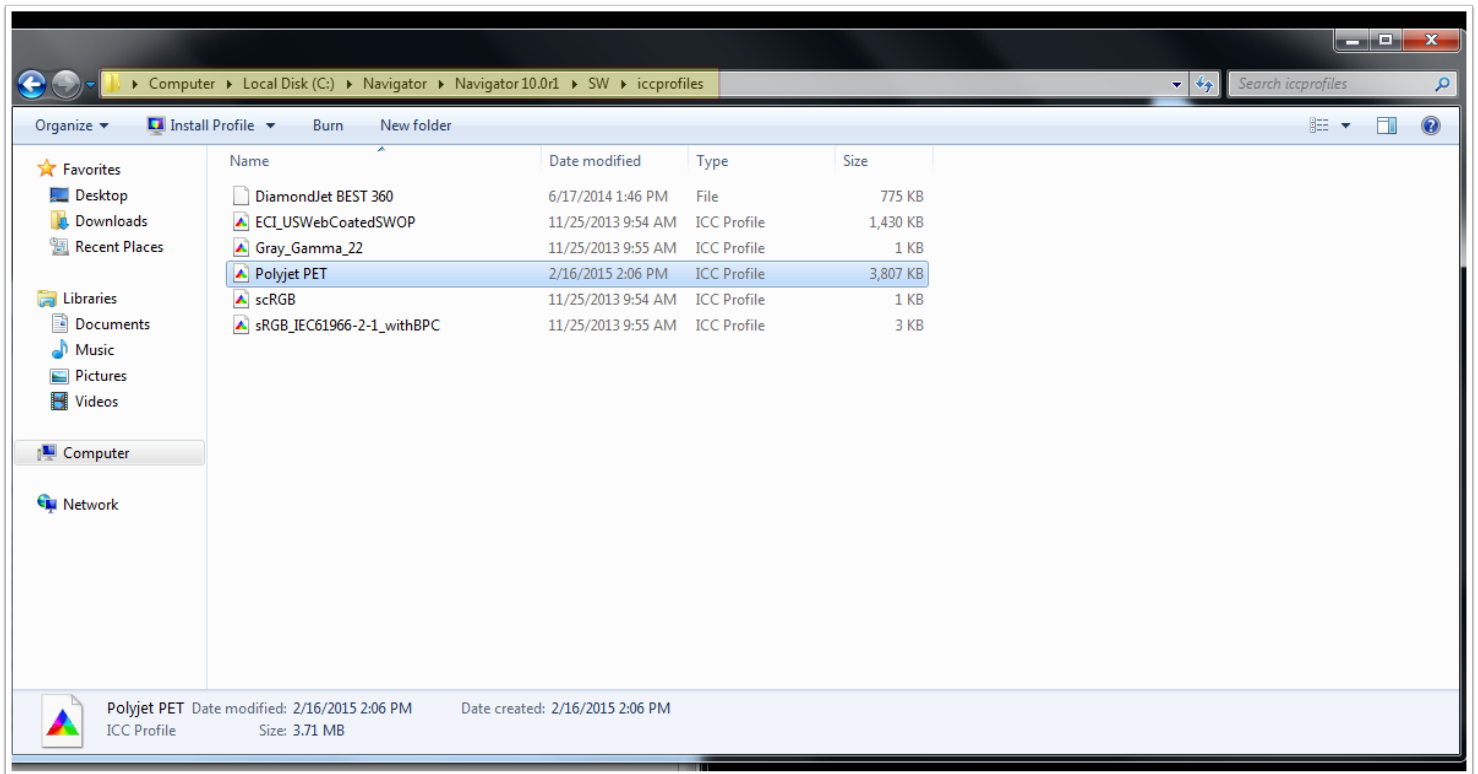


This document discusses how to successfully move ICC profiles and calibrations between Navigator RIP systems.

## 1. Copy the ICC Profile from the Source RIP

Locate and copy the ICC file (Sometimes these have an ICM extension) from the "iccprofiles directory" in the SW folder on the Navigator RIP. ICC profiles MUST be copied from the ICCProfiles folder, and not from the plug-in folder.

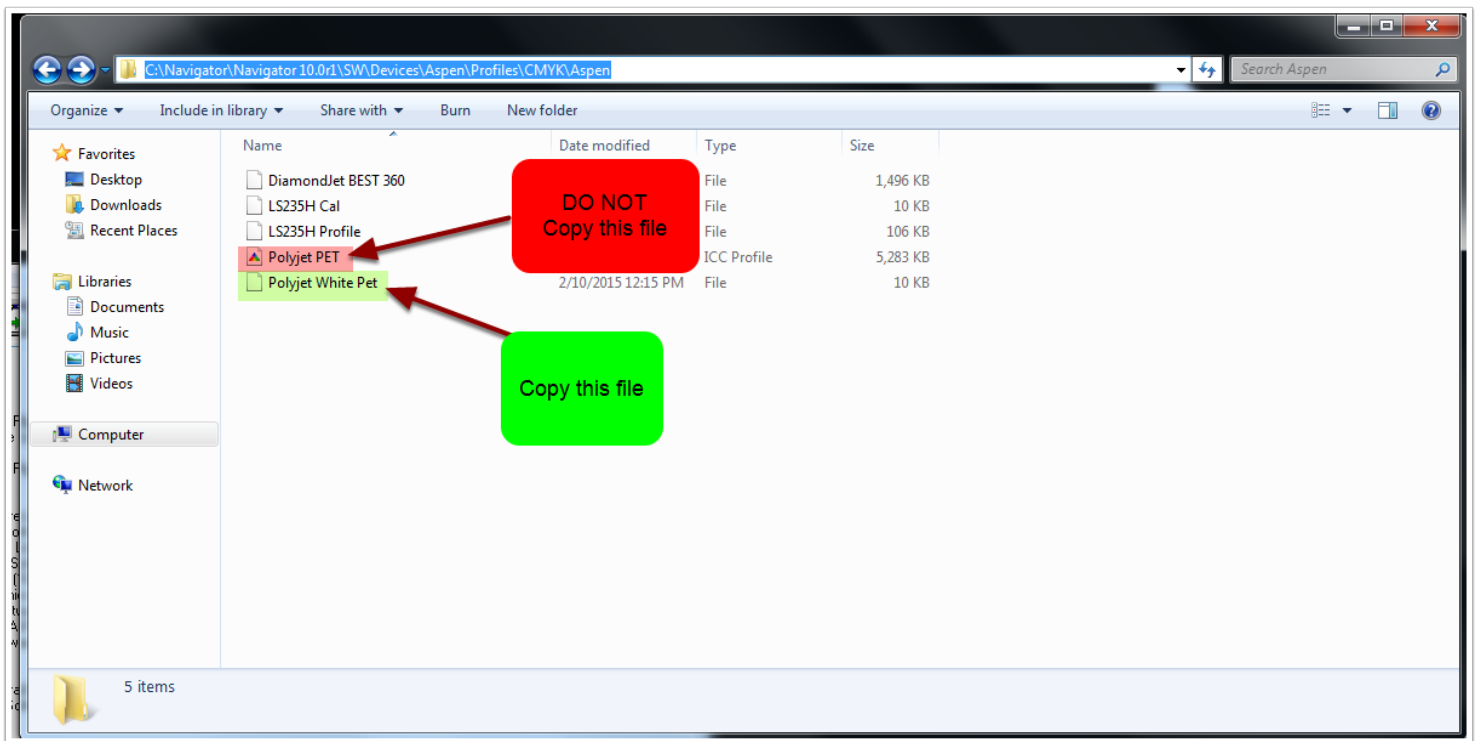


## 2. Copy the Calibration file from the Source RIP

Locate and copy the calibration file (No Extension) from the profile folder in the plugin directory for the device you are using.

For example C:\Navigator\Navigator 10.0r1\SW\Devices\Aspen\Profiles\CMYK\Aspen\

Do not attempt to copy the ICC Profile from this directory.

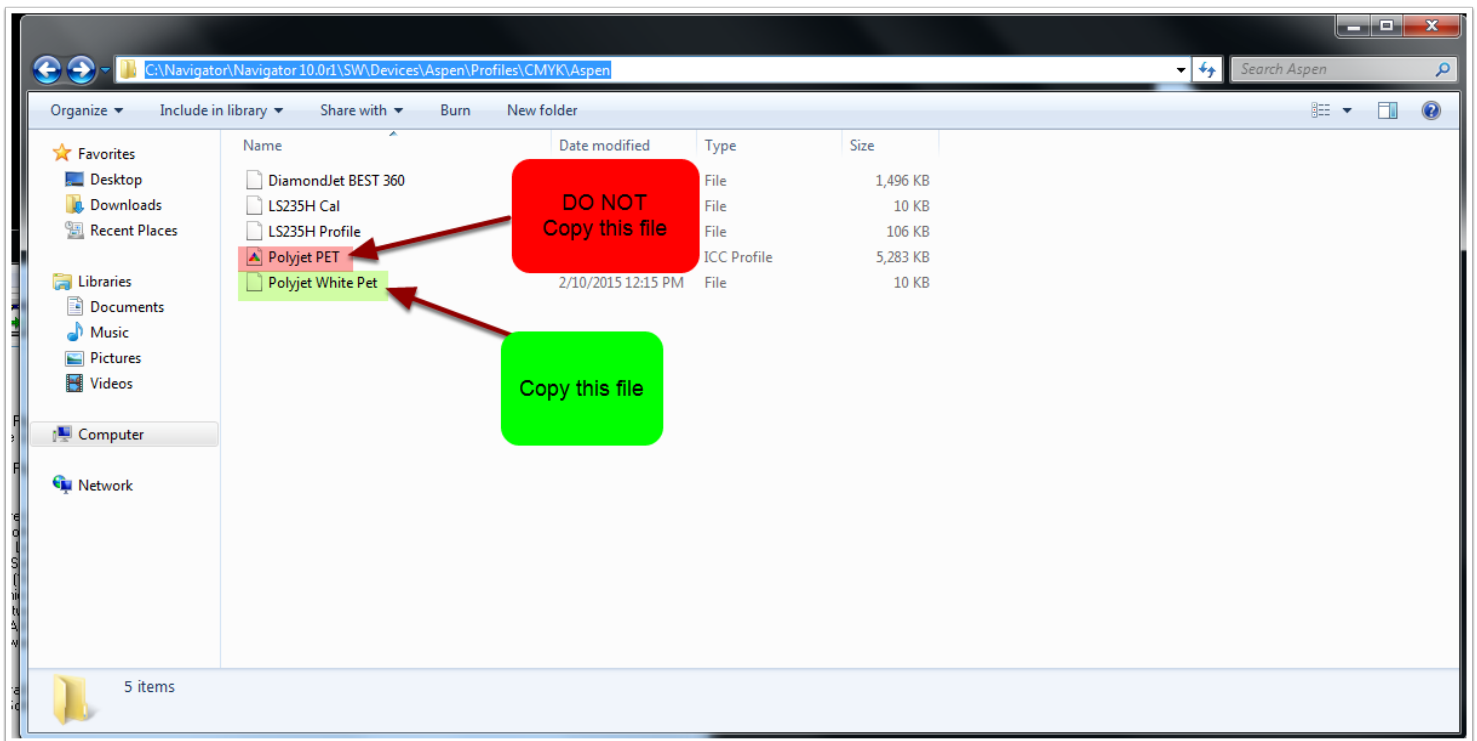


## 3. Copy the Calibration file into the Destination RIP

Locate and copy the calibration file (No Extension) to the profile folder in the plugin directory for the device you are using.

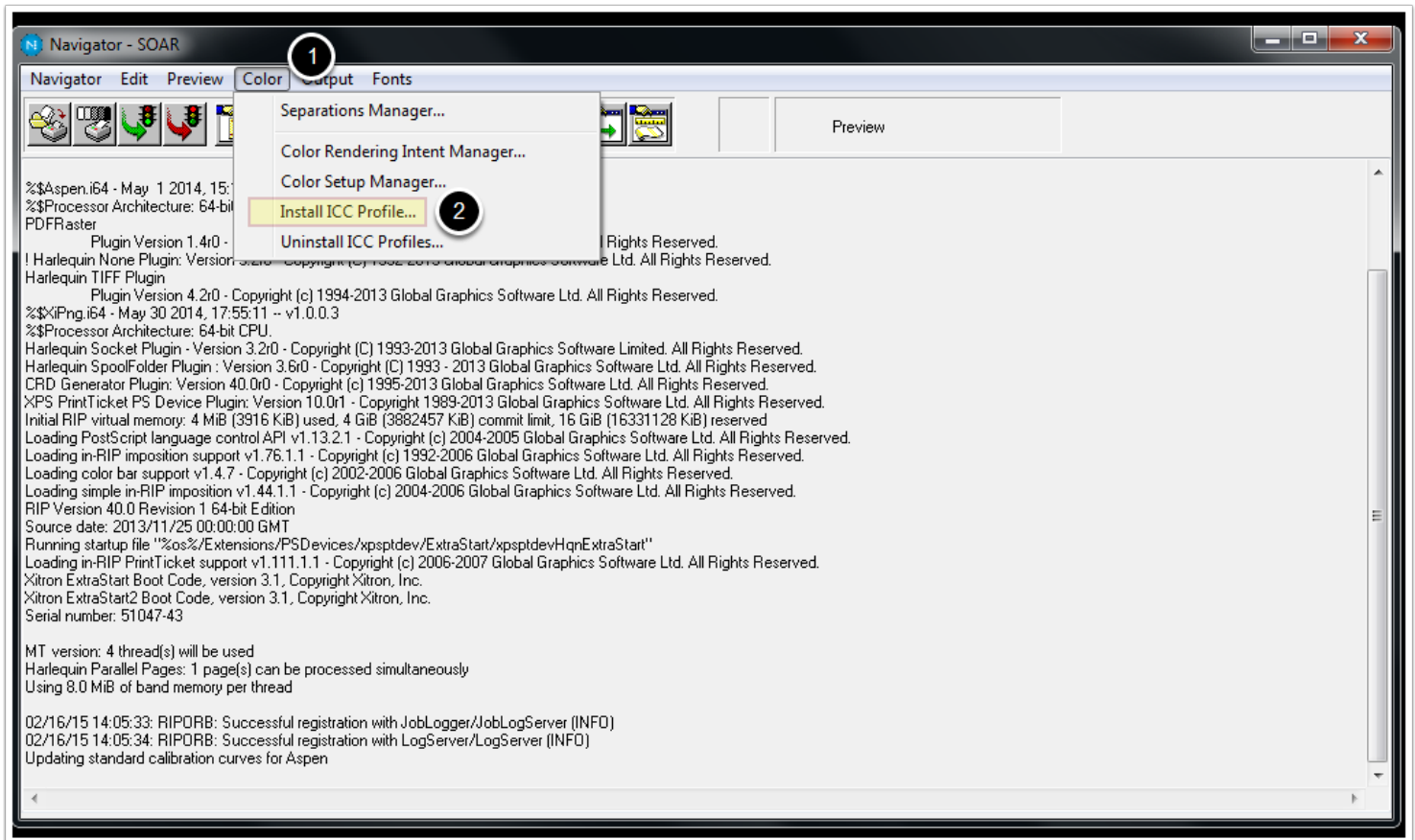
For example C:\Navigator\Navigator 10.0r1\SW\Devices\Aspen\Profiles\CMYK\Aspen\

Do not attempt to copy the ICC Profile to this directory.



## 4. Install the ICC Profile in the Destination RIP

From the "Color" menu in the Destination RIP, choose "Install ICC Profile".



## 5. Finish the installation by selecting the appropriate ICC Profile install settings.

1. Enter a name for the profile.
2. Select "Device Profile"
3. Choose the device (RIP Plug-in) that the ICC Profile is being used with.
4. Choose the Calibration. If a matching calibration does not appear, make sure you successfully copied the calibration to the destination RIP. (Step 3.) If the ICC profile was created from a Linear state rather than a calibrated state, choose Linear. (Was SetGold ran before profiling? If not, Linear is the right choice.)
5. Click Install.

