



NAVIGATOR



SIERRA



XITRON, LLC
4880 VENTURE DRIVE
SUITE 500
ANN ARBOR, MI 48108
WWW.XITRON.COM

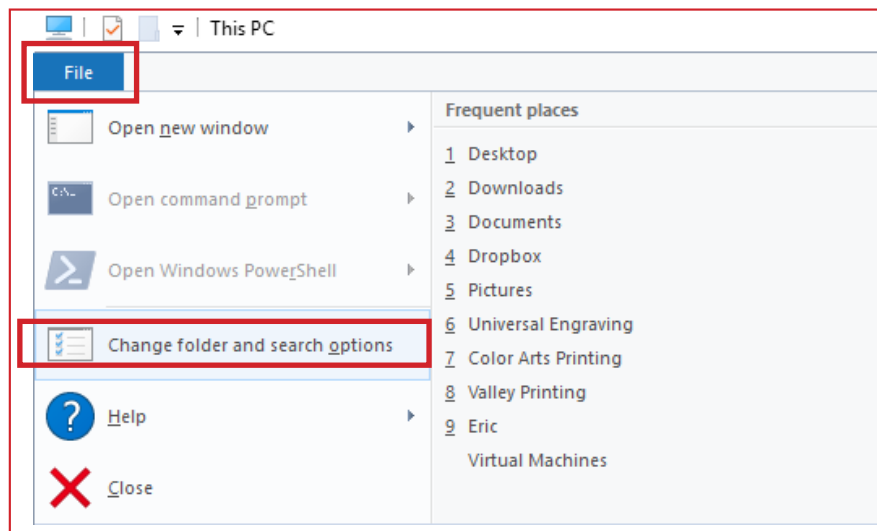
**NAVIGATOR & SIERRA
PRE-INSTALLATION
PLATFORM PREPARATION**

Prior to installing the Navigator or Sierra software, it is important to follow these steps to insure proper functionality. This is an outline that should be followed exactly in Windows 10.

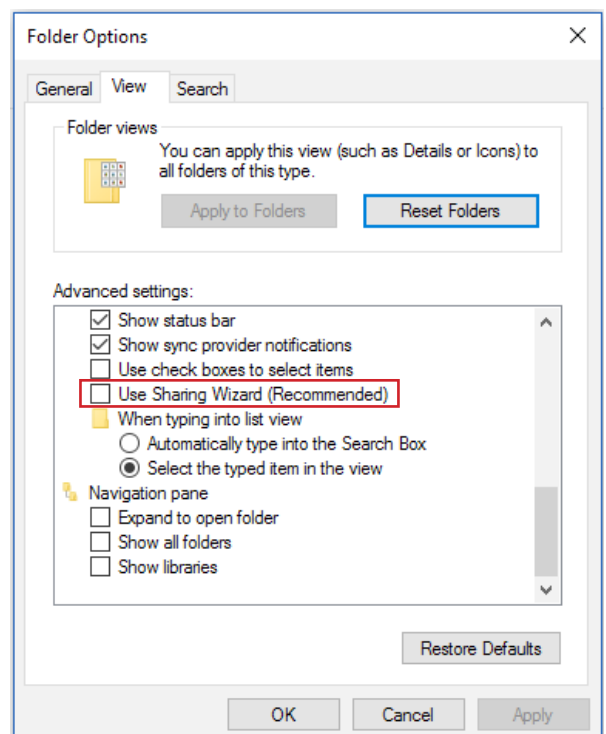
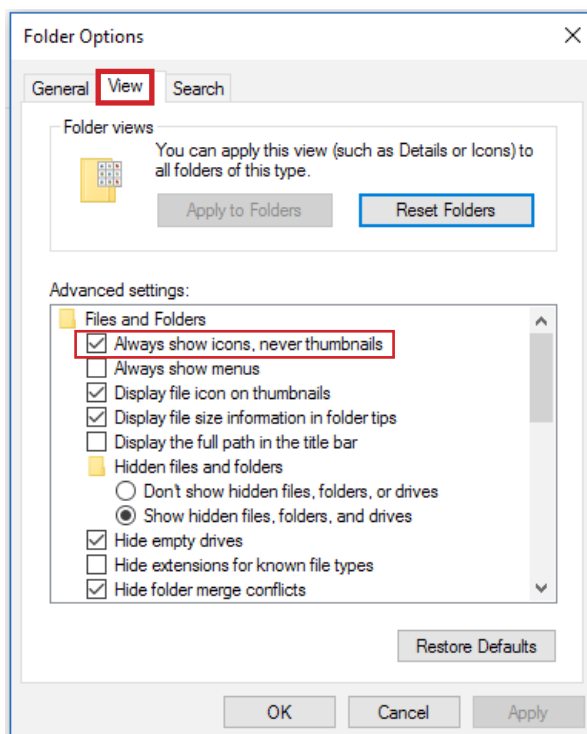
First, we'll configure Folder Options.

In Windows 10, you'll begin by opening a window in File Explorer. This can be done by clicking on your computer, or just pulling open the Documents tab from the Start menu.

Once here, click on the top left-hand 'File' menu, and select 'Change folder and search options'.

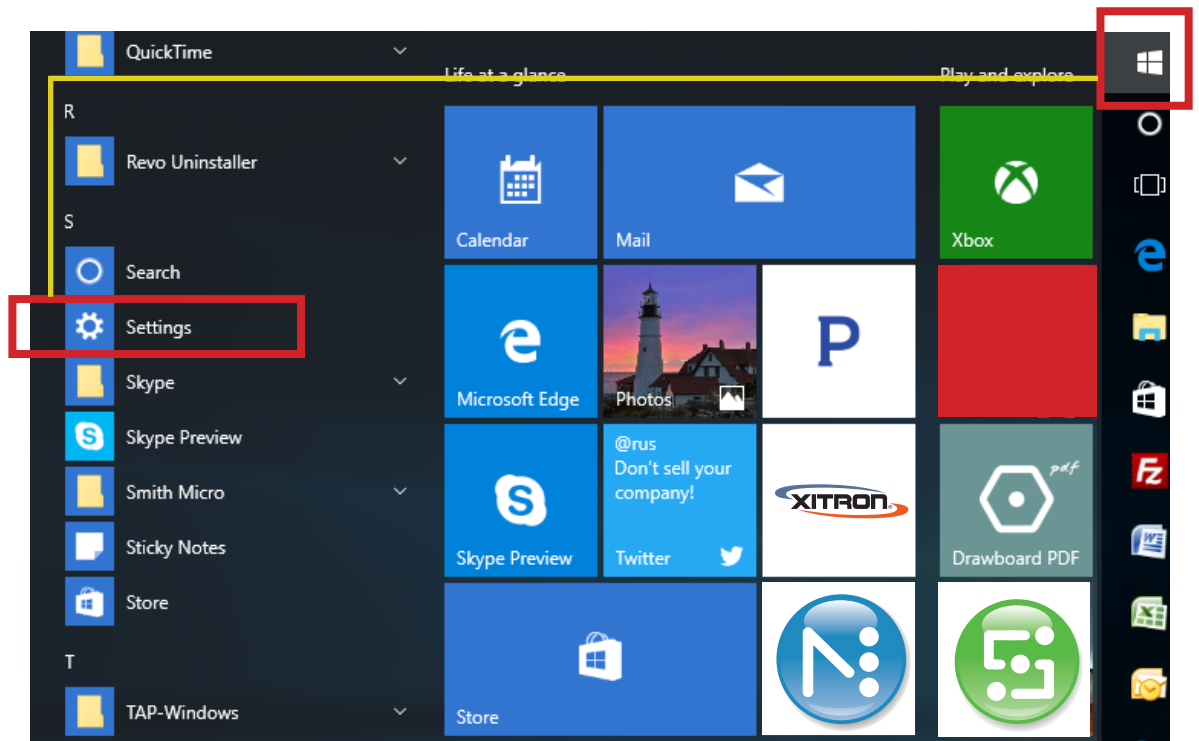


In the View tab, match these selections:



Next, we want to prohibit the computer platform from going to sleep.

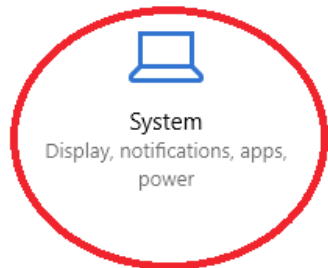
Go to Windows > Settings



From here, Click 'System'

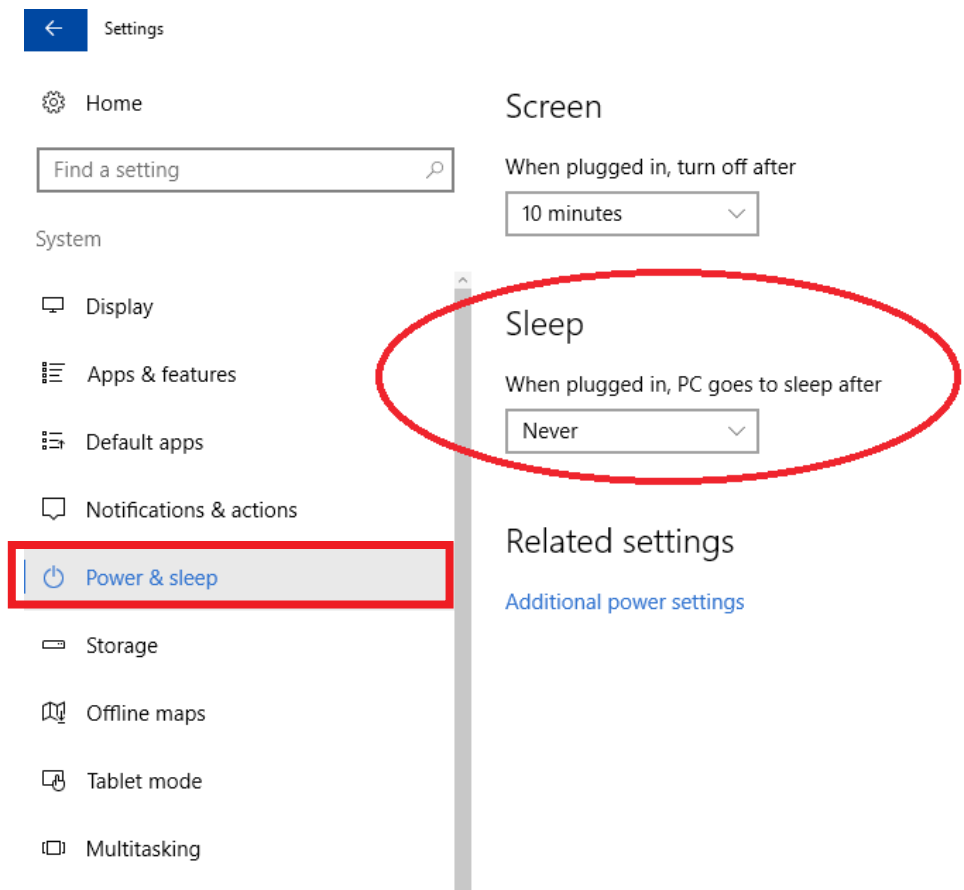
Windows Settings

Find a setting



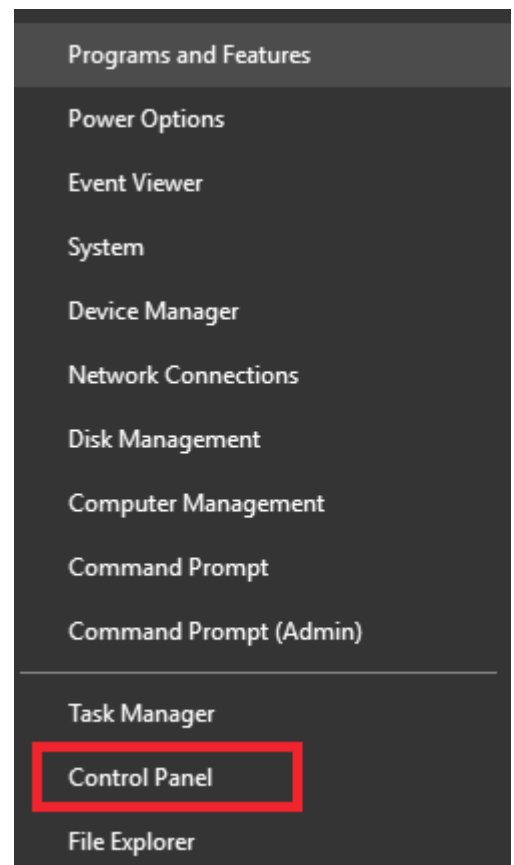
XITRON, LLC
4880 VENTURE DRIVE
SUITE 500
ANN ARBOR, MI 48108
WWW.XITRON.COM

Click to highlight 'Power and Sleep' - change to 'Never'



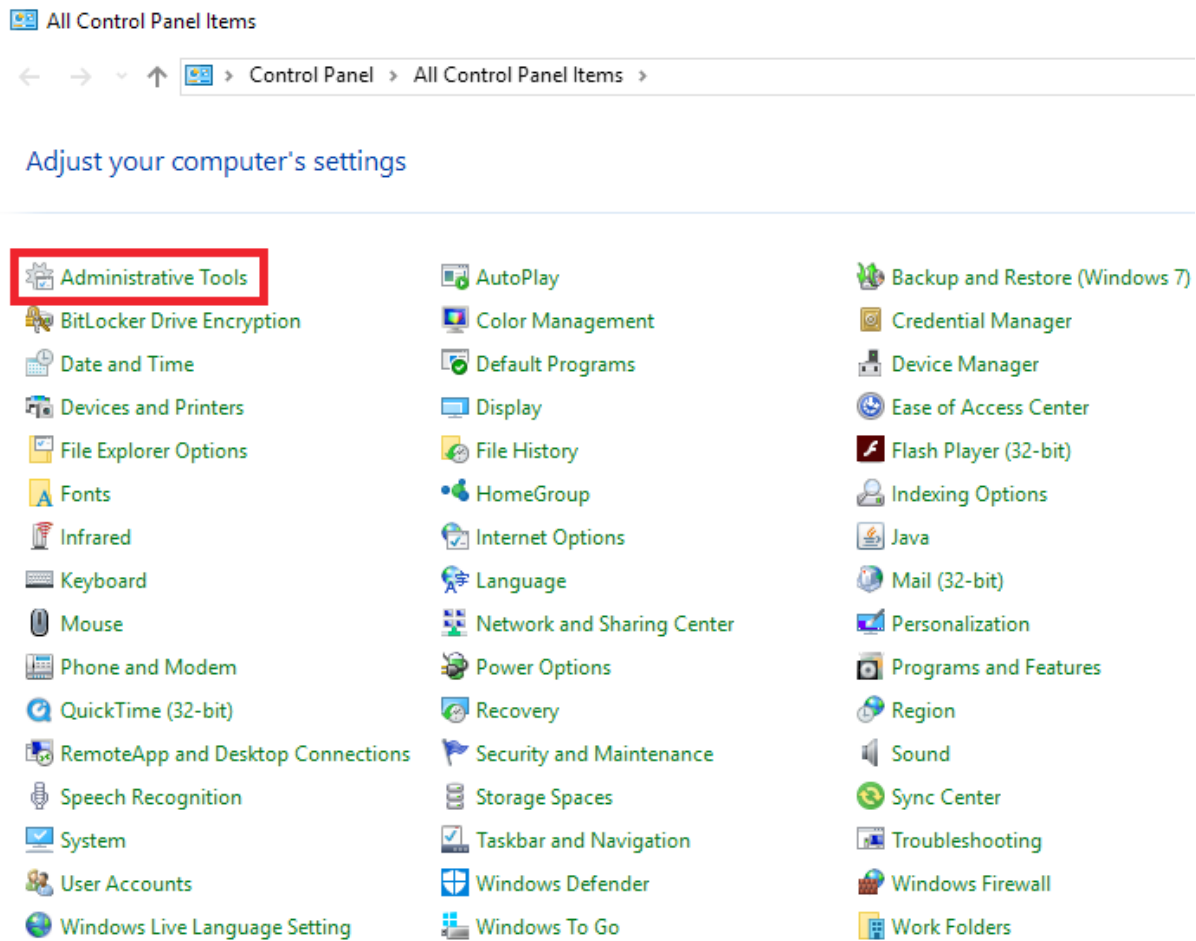
Open the Control Panel

Right-Click on the Windows Icon and select 'Control Panel' from the extended menu

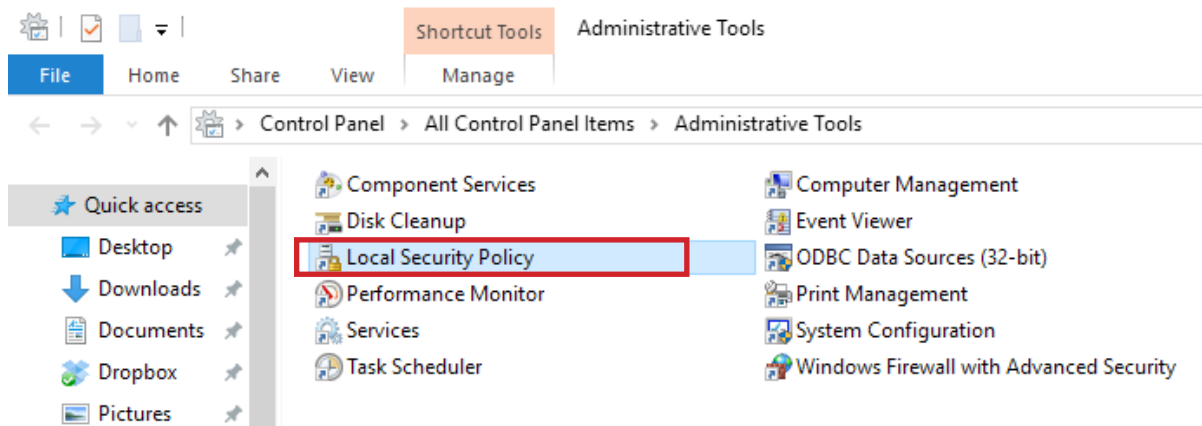


XITRON, LLC
4880 VENTURE DRIVE
SUITE 500
ANN ARBOR, MI 48108
WWW.XITRON.COM

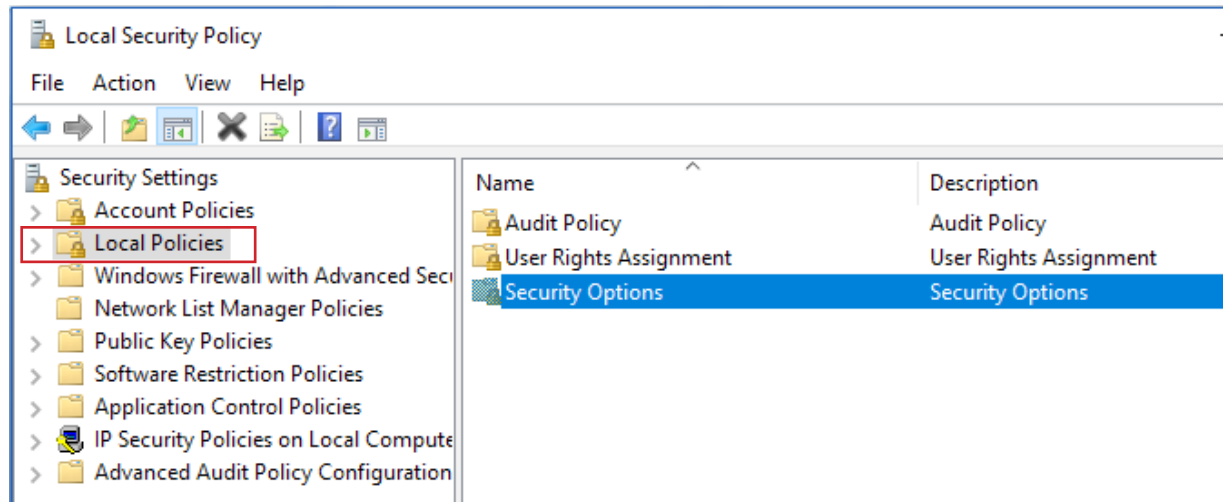
Click on 'Administrative Tools'



In the list of tools, find and double-click on the 'Local Security Policy' shortcut

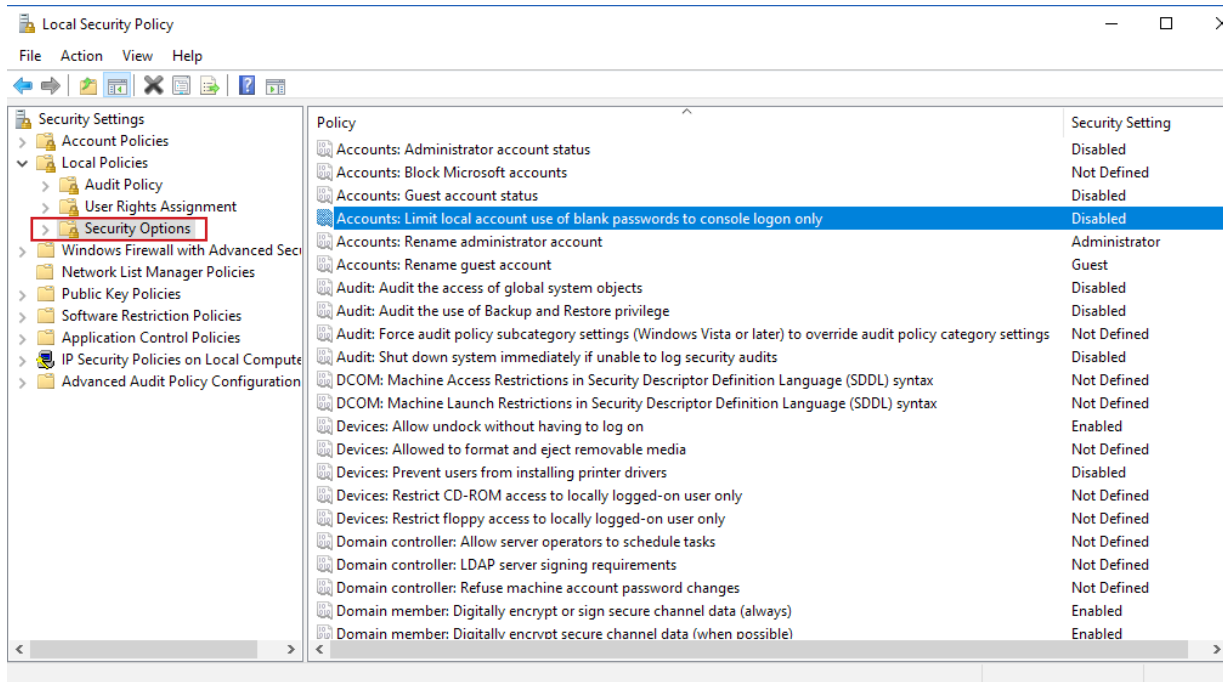


Click 'Local Policies, then double-click Security Options'



Locate 'Accounts: Limit local account use of blank passwords to console login only'

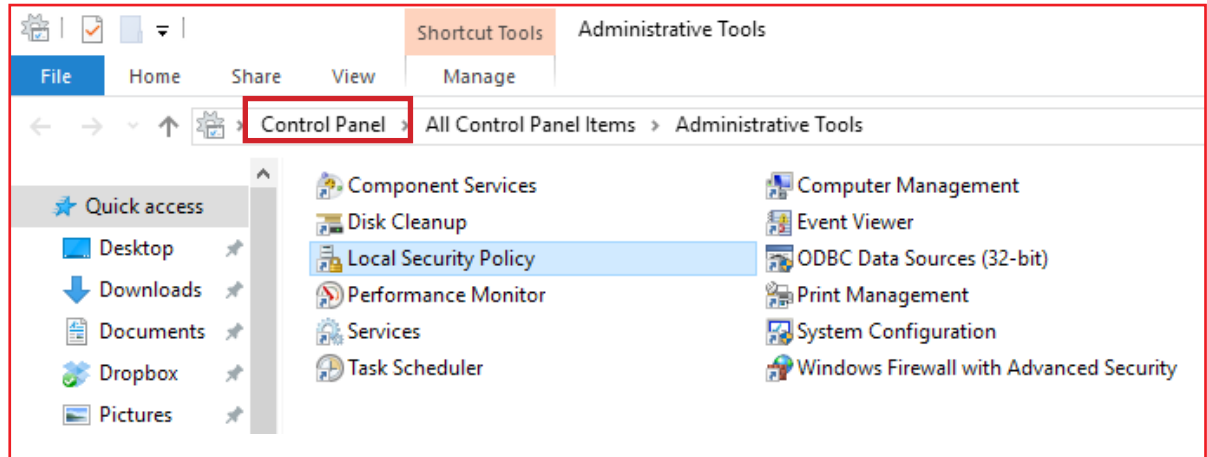
Double-Click to change to 'Disabled'



Close this window

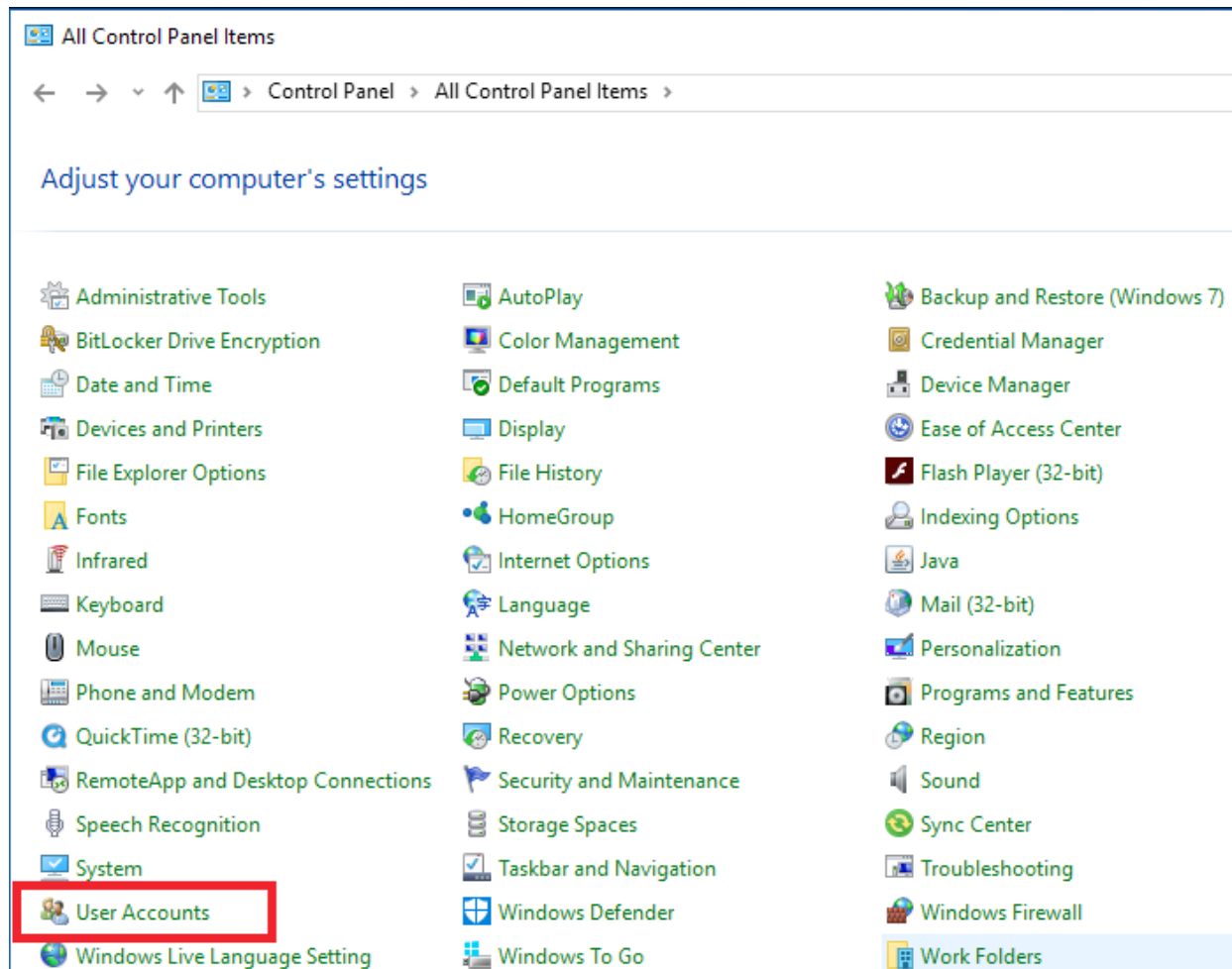


Back to Control Panel

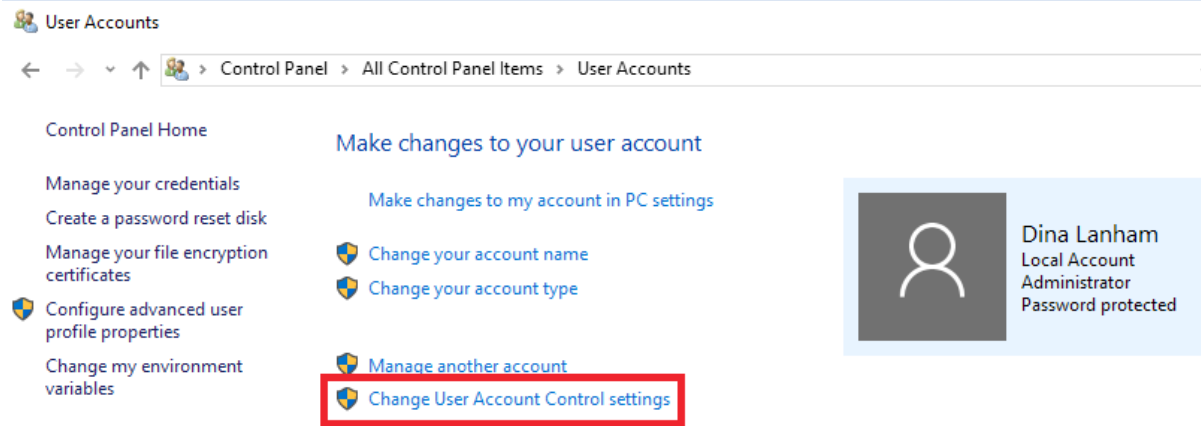


Select 'User Accounts'

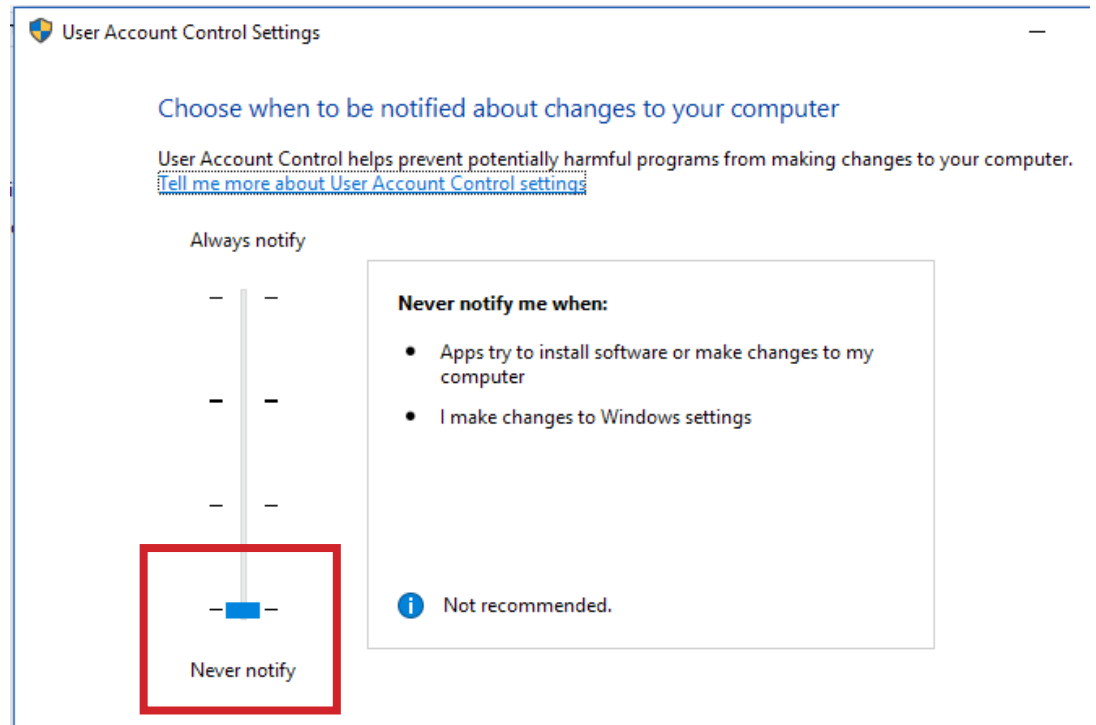
View by: **Small icons** ▾



Click 'Change User Account Control settings'



Slide the bar down to 'Never notify'



Click 'OK' and close the window

