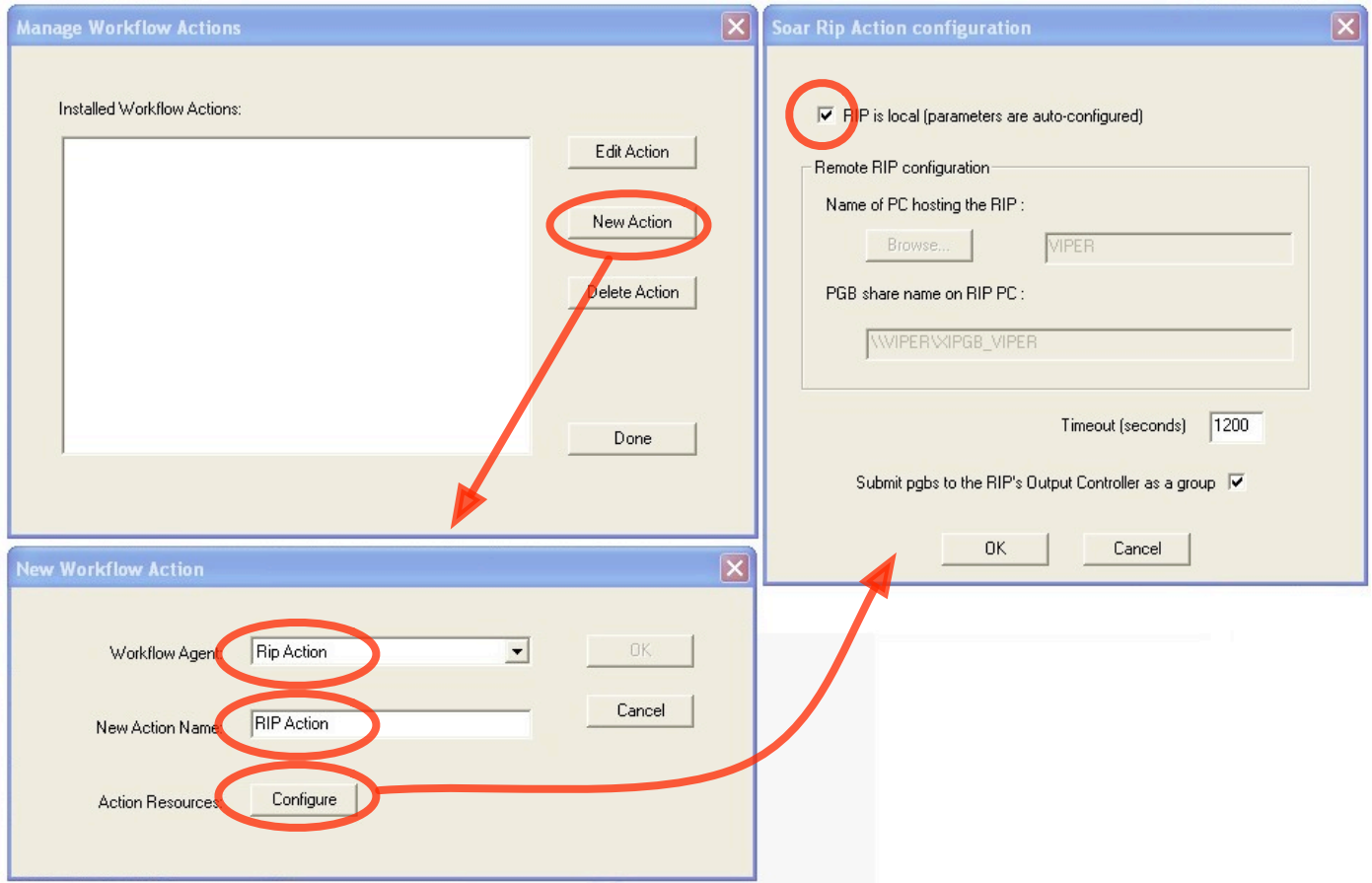


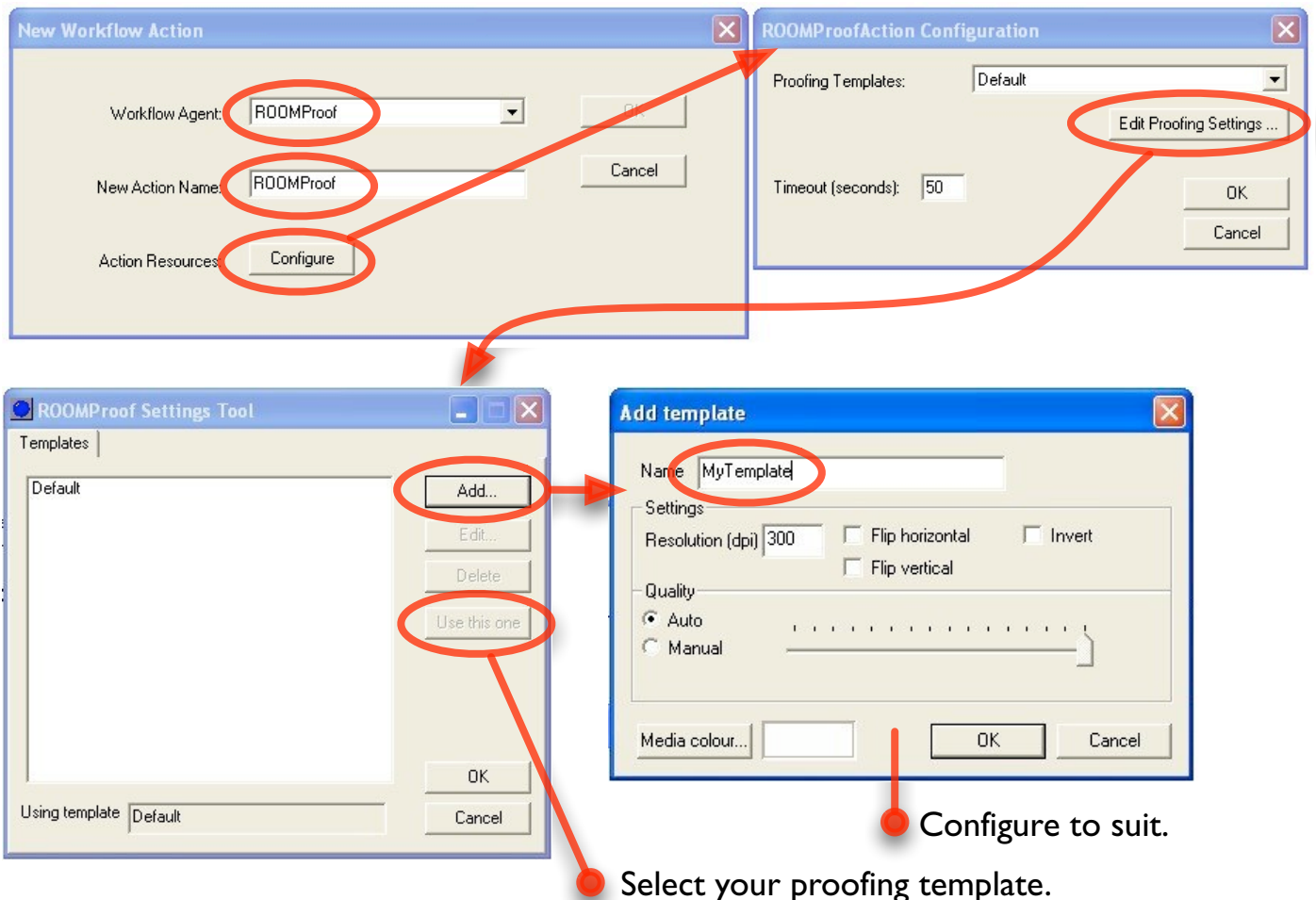
# Configuring Navigator ROOMProof workflows

In Navigator Server, log in as Administrator and add a RIP Action:

Draft 25Mar10 NPD



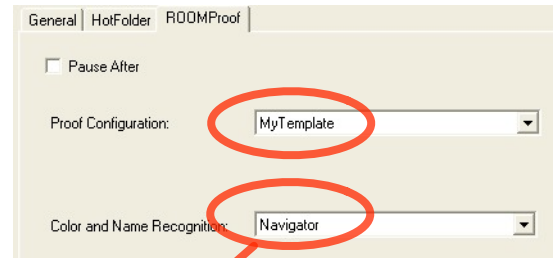
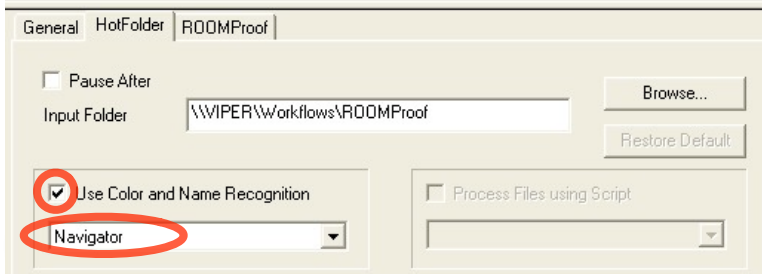
Add a ROOMProof Action:



## Configuring a Navigator ROOMProof workflow for separated TIFF input

In Navigator Client, construct a ROOMProof workflow. Select Workflows->New Workflow. Name it (e.g. 'ROOMProof'). Add a ROOMProof Action by dragging it from the Output pane.

### ROOMProof

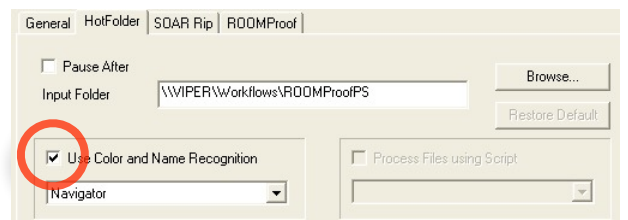
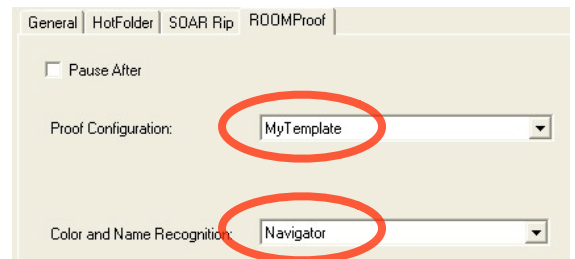
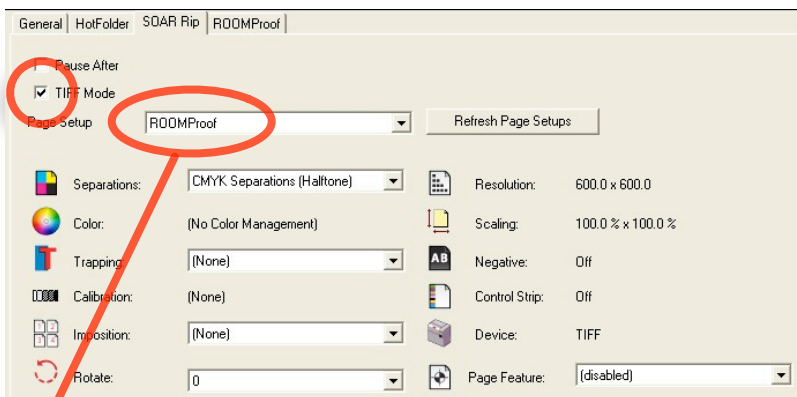


You can create a different Name Recognition file using the Navigator Server, Color & Name Tool.

## Configuring a Navigator ROOMProof workflow for PostScript or PDF input

In Navigator Client, construct a ROOMProof workflow. Select Workflows->New Workflow. Name it (e.g. 'ROOMProofPS'). Add a RIP Action and a ROOMProof Action.

### ROOMProofPS



Make a RIP page setup to make CMYK+spot separations at an integer factor of the printer's resolution (to avoid moiré).