



# EZMCOM Windows Credential Provider User Guide

---

**Document Number**

EZM\_WINCP\_INST\_00

---

**Issue Date**

11 Aug 2016

Version 1.0.0

---

**Prepared for**

WinCP Users

**Prepared by**

EZMCOM Inc.  
4701 PATRICK HENRY DR, SANTA CLARA, CA, 950541863, US.

Tel: +1 510 396 3894  
+60 (0)12 570 1114

Email: [info@ezmcom.com](mailto:info@ezmcom.com)

---

**Copyright © 2016 by EZMCOM**

This work is copyright. Other than as permitted by law, no part of this document may be reproduced, stored in a retrieval system or transmitted in any form or by any process without prior written permission.

## Prerequisite:

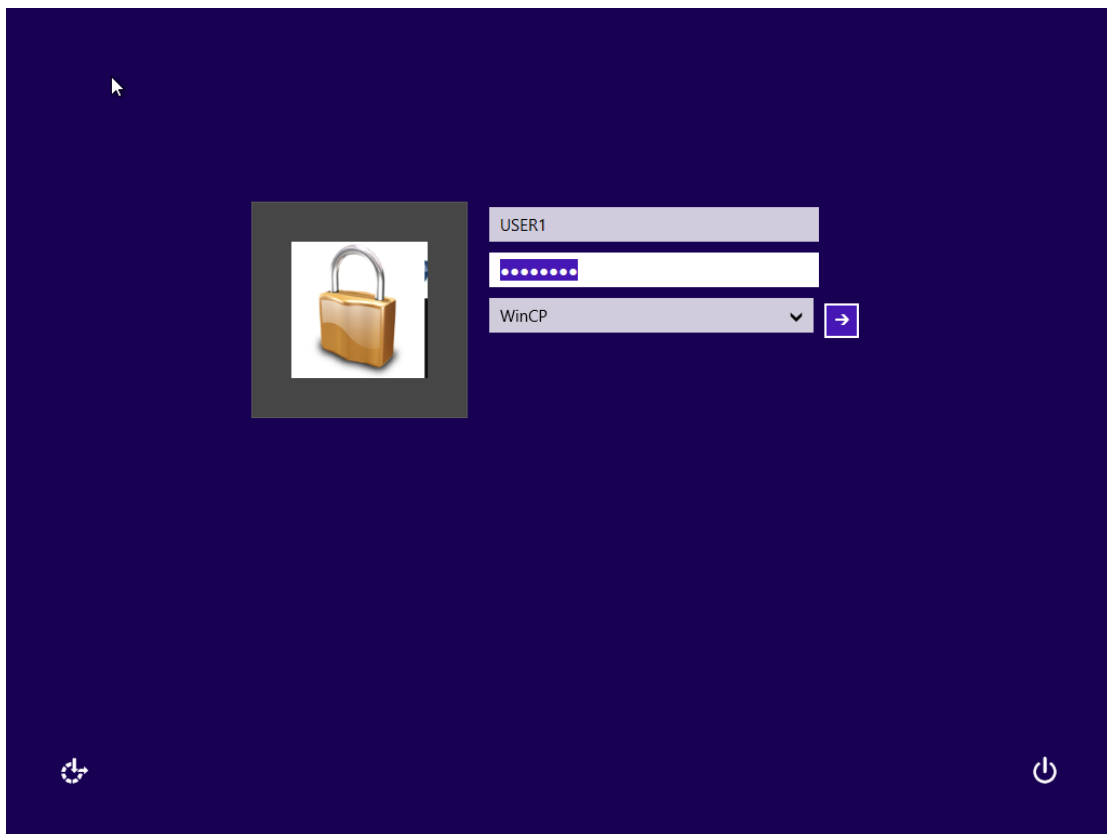
**IMPORTANT NOTE:** Push requires EzToken app to be installed in mobile device. OTP can be obtained from EzToken or OOB (Email or SMS). Please ensure user have been assigned OOB or Soft token.

## Supported Windows Operating Systems:

- Windows 7 x86/x64
- Windows 8 x86/x64
- Windows 8.1 x64/x64
- Windows Server 2008 x64
- Windows Server 2012 R2 x64
- Windows 10 x32/x64

## User Manual:

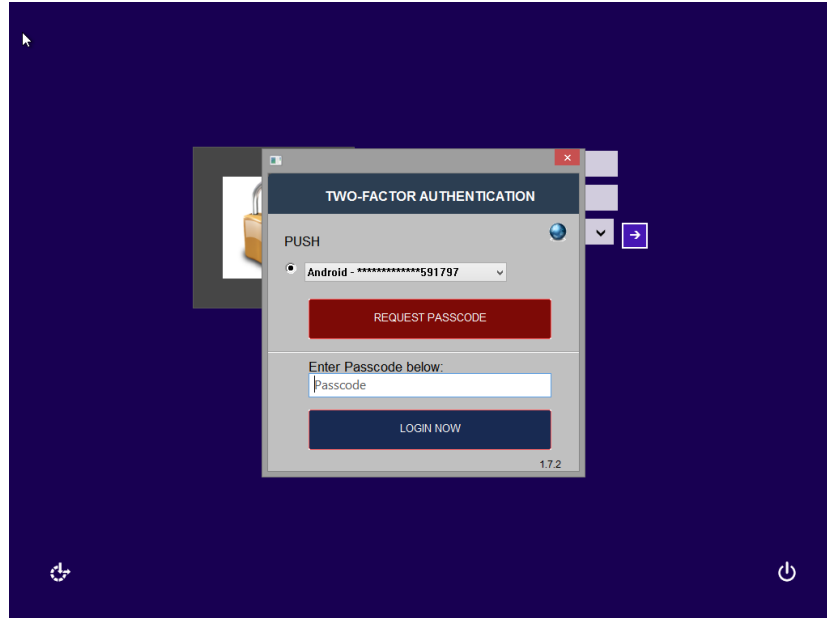
1. User will be prompted to input username and password to login to Windows. Key in Username and password.



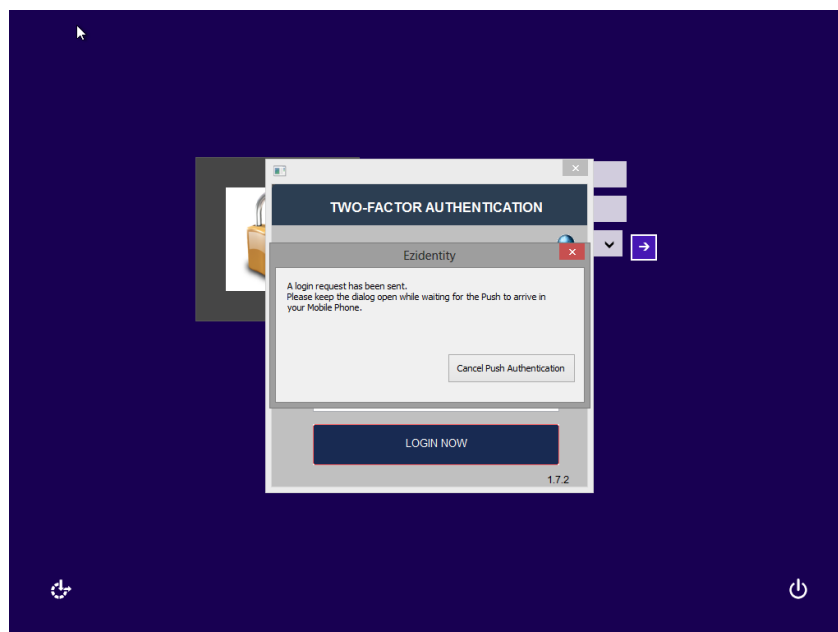
## USING Soft Token

2. User can choose 2fa authentication options, **PUSH** or **OTP**.

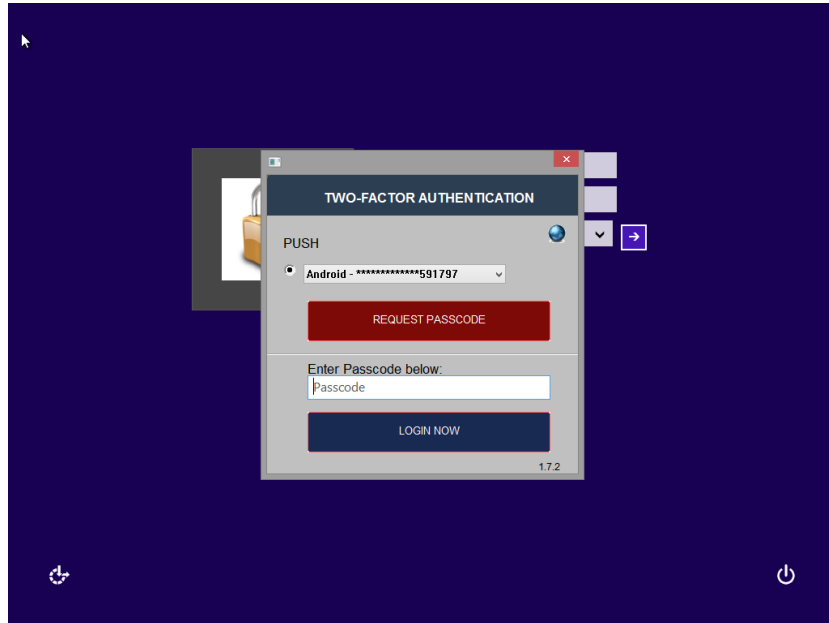
i) For **PUSH** authentication method, click 'REQUEST PASSCODE'



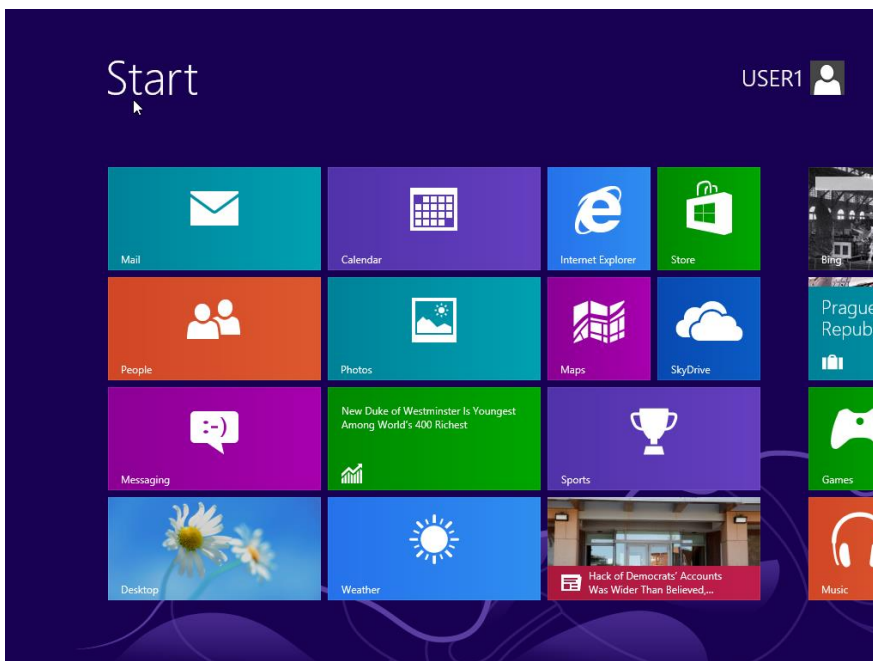
PUSH notification will be delivered to your mobile device.  
Tap Approve on mobile device.



- ii) For **OTP** authentication method, get OTP from ezToken app and enter the OTP in the Passcode field.

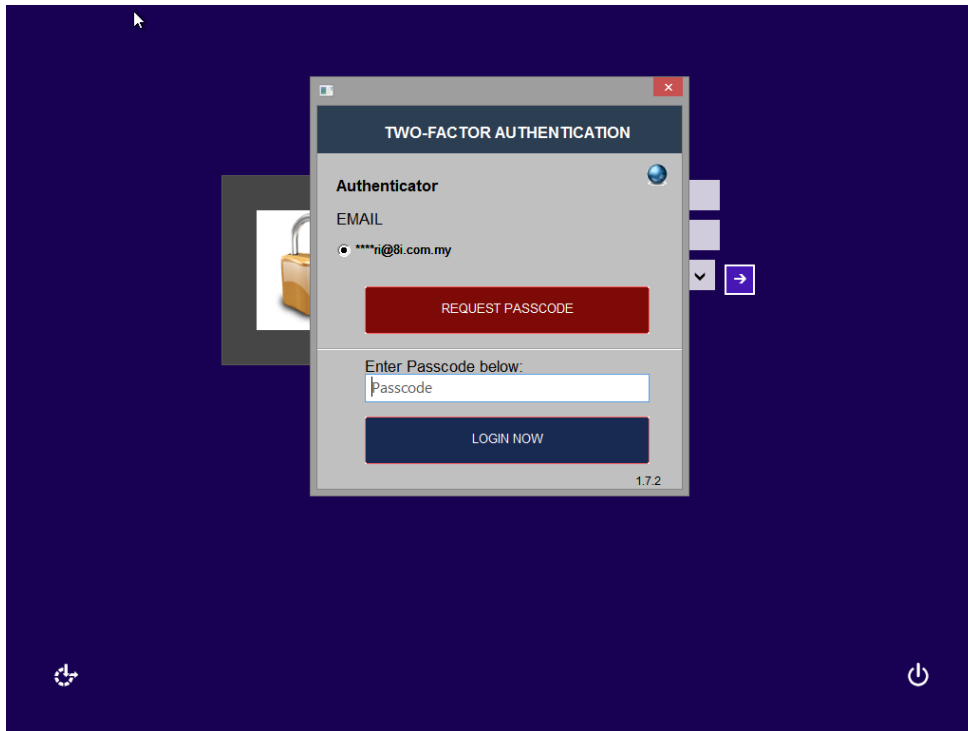


User will be authenticated to the machine after entering OTP or PUSH.



## USING OOB Token (Email)

3. Click on REQUEST PASSCODE to retrieve Passcode via email .

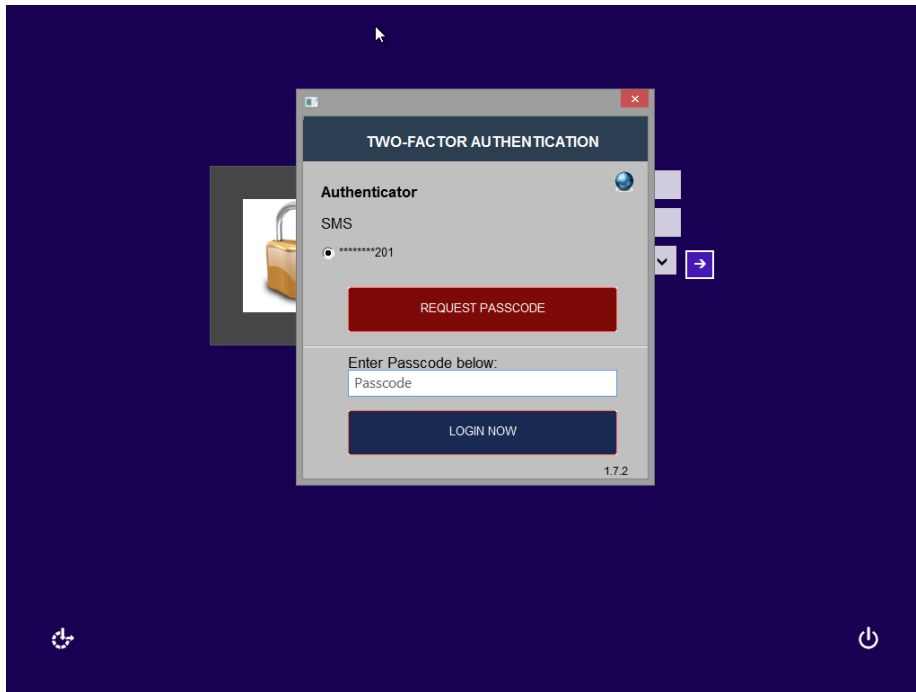


User will be authenticated to the machine after entering Passcode.

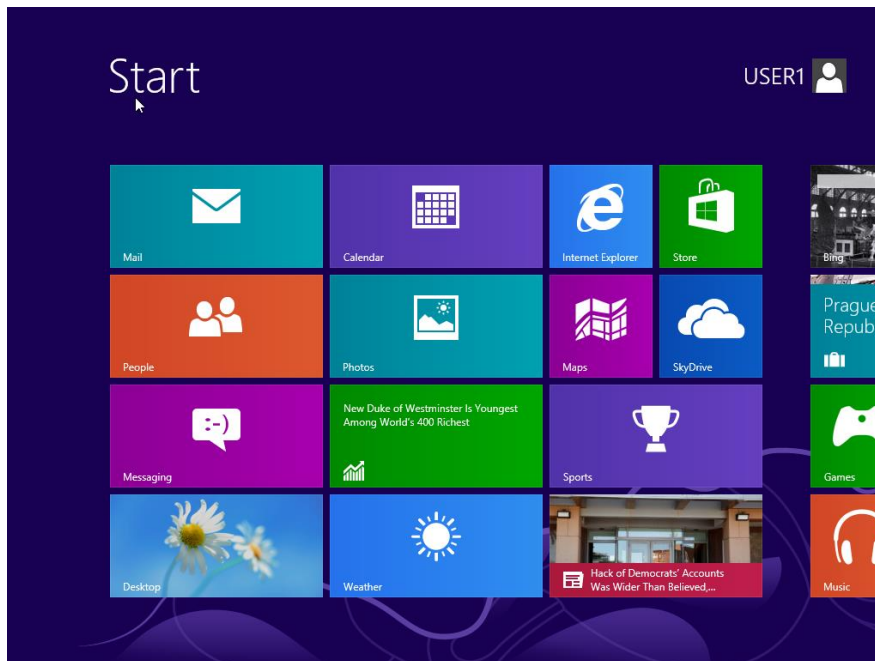


## USING OOB Token (SMS)

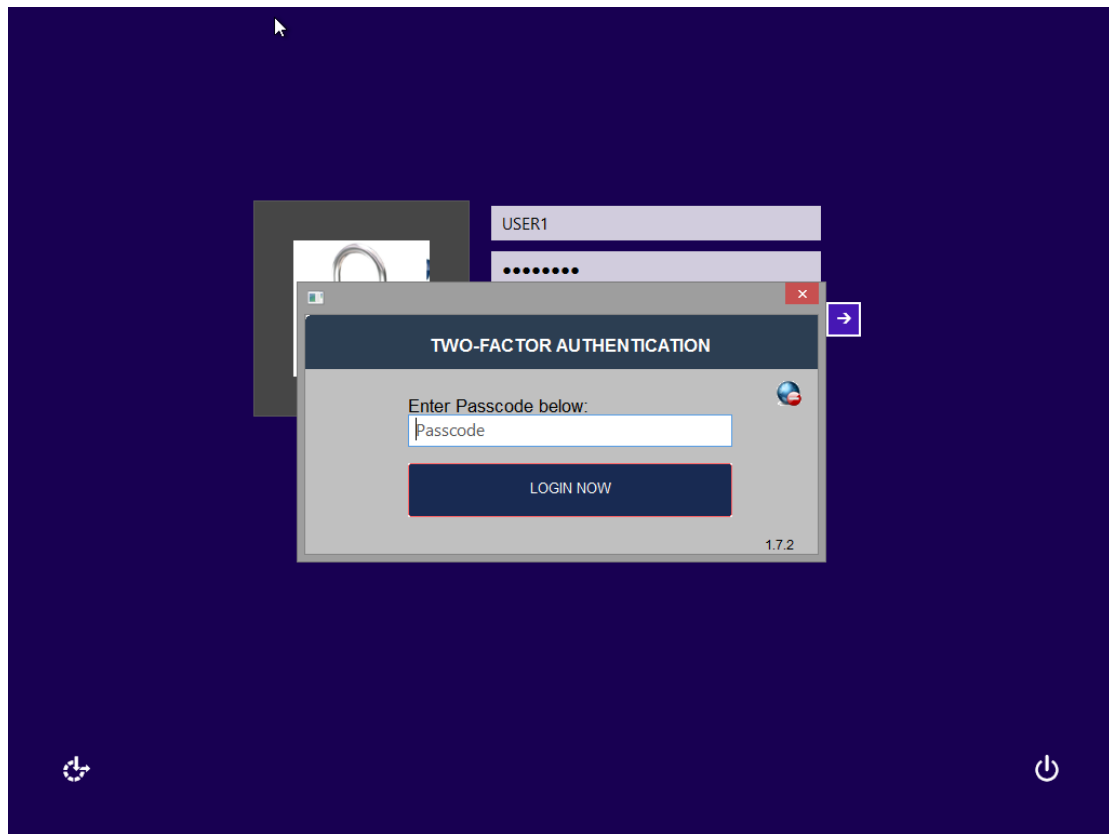
1. Click on REQUEST PASSCODE to retrieve Passcode via sms.



User will be authenticated to the machine after entering Passcode.



2. If the machine is OFFLINE, user will be prompted OTP authentication only. Retrieve the OTP from the assigned tokens and enter the passcode to login.



## Confidentiality Statement

EZMCOM Inc. reserves all rights to the confidential information and intellectual property contained in this document. This document may contain information relating to the business, commercial, financial or technical activities of EZMCOM. This information is intended for the sole use of the recipient, as the disclosure of this information to a third party would expose EZMCOM to considerable disadvantage. No part of this document may be reproduced, stored in a retrieval system or transmitted in any form or by any process without prior written permission. This information is provided under an existing non-disclosure agreement with the recipient.

## Copyright Statement

This work is Copyright 2003-2013 by EZMCOM Inc. All Rights Reserved. No permission to reproduce or use EZMCOM copyright material is to be implied by the availability of that material in this or any other document.

All third party product and service names and logos used in this document are trade names, service marks, trademarks, or registered trademarks of their respective owners.

The example companies, organizations, products, people and events used in screenshots in this document are fictitious. No association with any real company, organization, product, person, or event is intended or should be inferred.

## Disclaimer

EZMCOM Inc. makes no, and does not intend to make any, representations regarding any of the products, protocols or standards contained in this document. EZMCOM does not guarantee the content, completeness, accuracy or suitability of this information for any purpose. The information is provided "as is" without express or implied warranty and is subject to change without notice. EZMCOM disclaims all warranties with regard to this information, including all implied warranties of merchantability and fitness for a particular purpose and any warranty against infringement. Any determinations and/or statements made by EZMCOM with respect to any products, protocols or standards contained in this document are not to be relied upon.

## Liability

In no event shall EZMCOM be liable for any special, incidental, indirect or consequential damages whatsoever (including, without limitation, damages for loss of business profits, business interruption, loss of business information, or any other pecuniary loss) whether in an action of contract, negligence or other tortious action, rising out of or in connection with the use or inability to use this information or the products, protocols or standards described herein, even if EZMCOM has been advised of the possibilities of such damages



