



# EZMCOM Windows Credential Provider Installation Guide

---

**Document Number**

EZM\_WINCP\_INST\_00

---

**Issue Date**

12 Jul 2016

Version 1.0.2

---

**Prepared for**

EZMCOM Software Product Administrator

**Prepared by**EZMCOM Inc.  
4701 PATRICK HENRY DR, SANTA CLARA, CA, 950541863, US.Tel: +1 510 396 3894  
+60 (0)12 570 1114Email: [info@ezmcom.com](mailto:info@ezmcom.com)

---

**Copyright © 2016 by EZMCOM**

This work is copyright. Other than as permitted by law, no part of this document may be reproduced, stored in a retrieval system or transmitted in any form or by any process without prior written permission.

## Prerequisite:

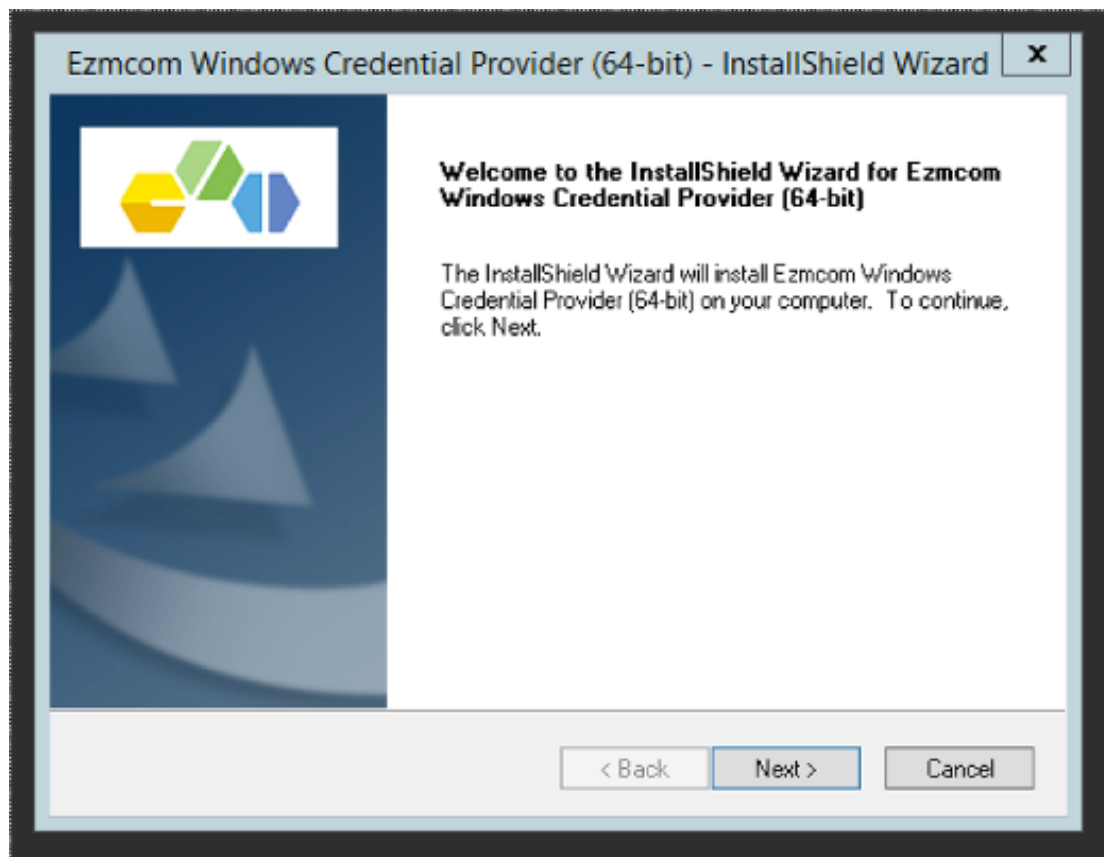
**IMPORTANT NOTE:** There are different Windows Credential Provider (WINCP) installer exe files provided targeting different Windows OS architectures (x86 and x64). Please ensure you are using the right installer before proceeding to install.

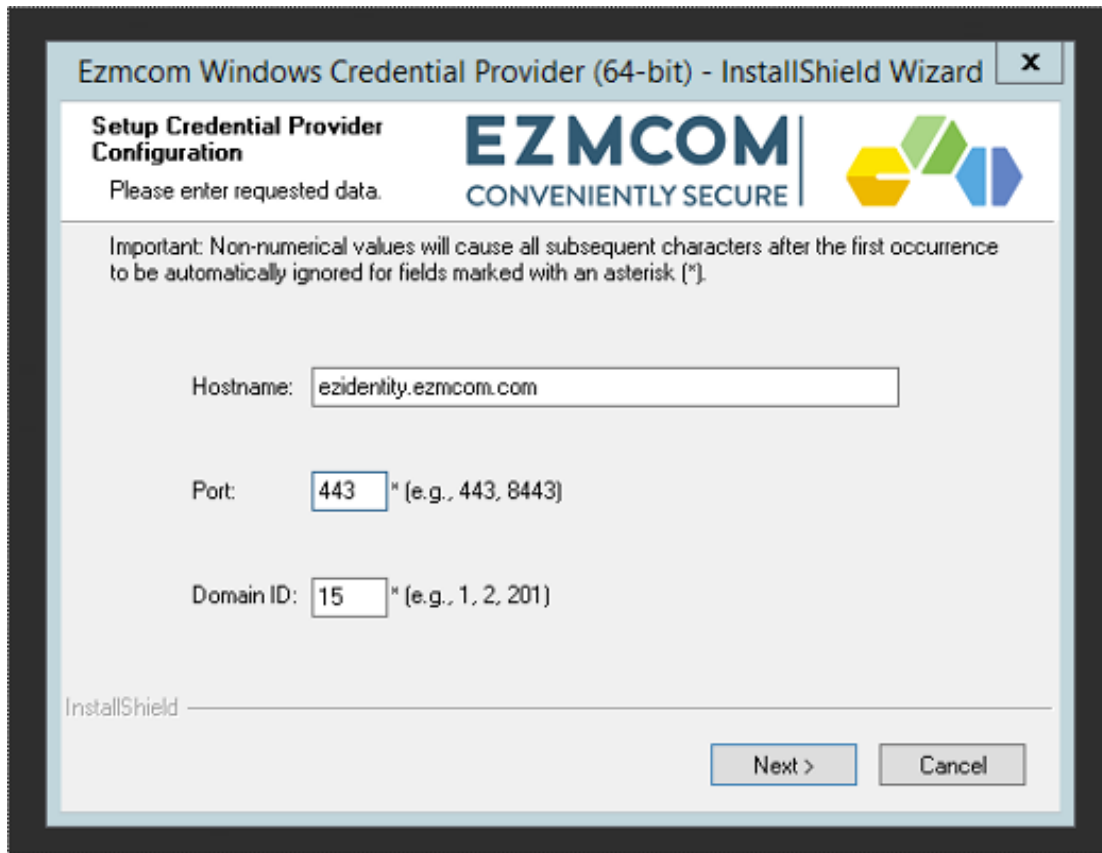
## Supported Windows Operating Systems:

- Windows 7 x86/x64
- Windows 8 x86/x64
- Windows 8.1 x64/x64
- Windows Server 2008 x64
- Windows Server 2012 R2 x64
- Windows 10 x32/x64

## Installation steps:

1. Run the installer exe file to start the installation wizard, then follow the instructions on screen.





Ezmcom Windows Credential Provider (64-bit) - InstallShield Wizard

**Setup Credential Provider Configuration**

Please enter requested data.

**EZMCOM**  
CONVENIENTLY SECURE

Important: Non-numerical values will cause all subsequent characters after the first occurrence to be automatically ignored for fields marked with an asterisk (\*).

Hostname:

Port:  \* (e.g., 443, 8443)

Domain ID:  \* (e.g., 1, 2, 201)

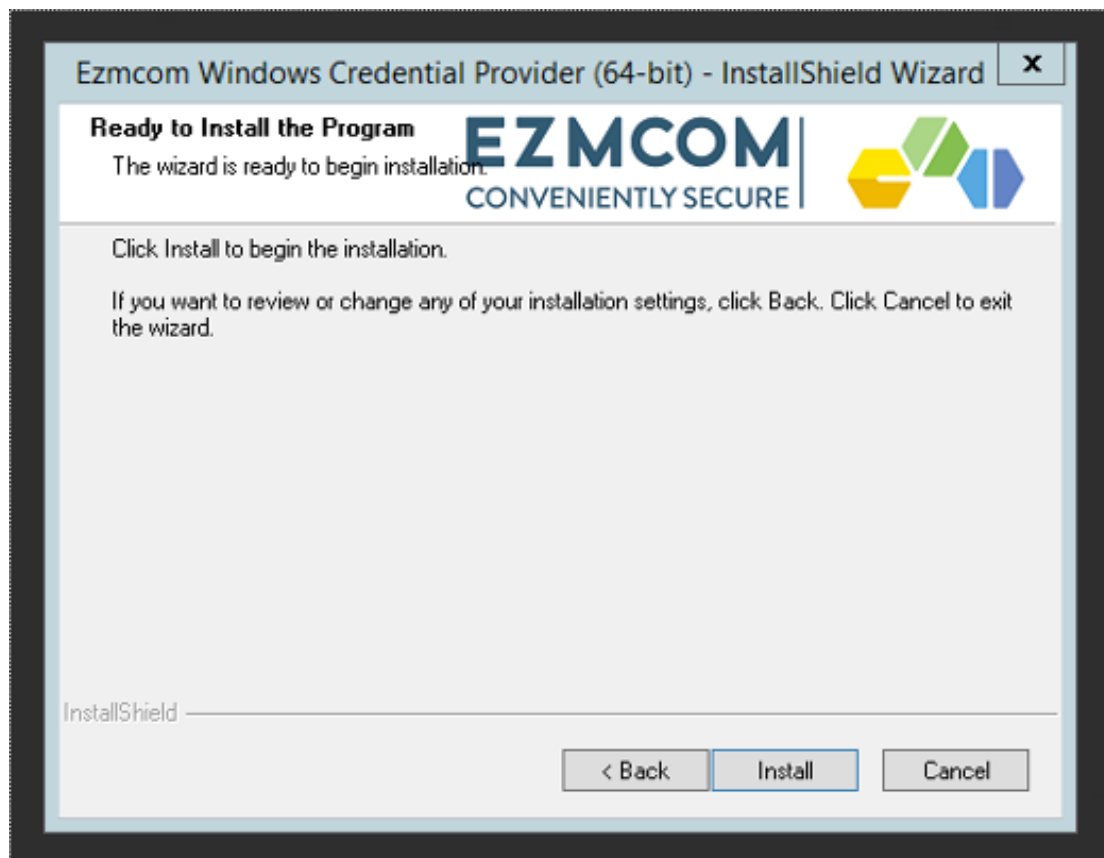
InstallShield

Next > Cancel

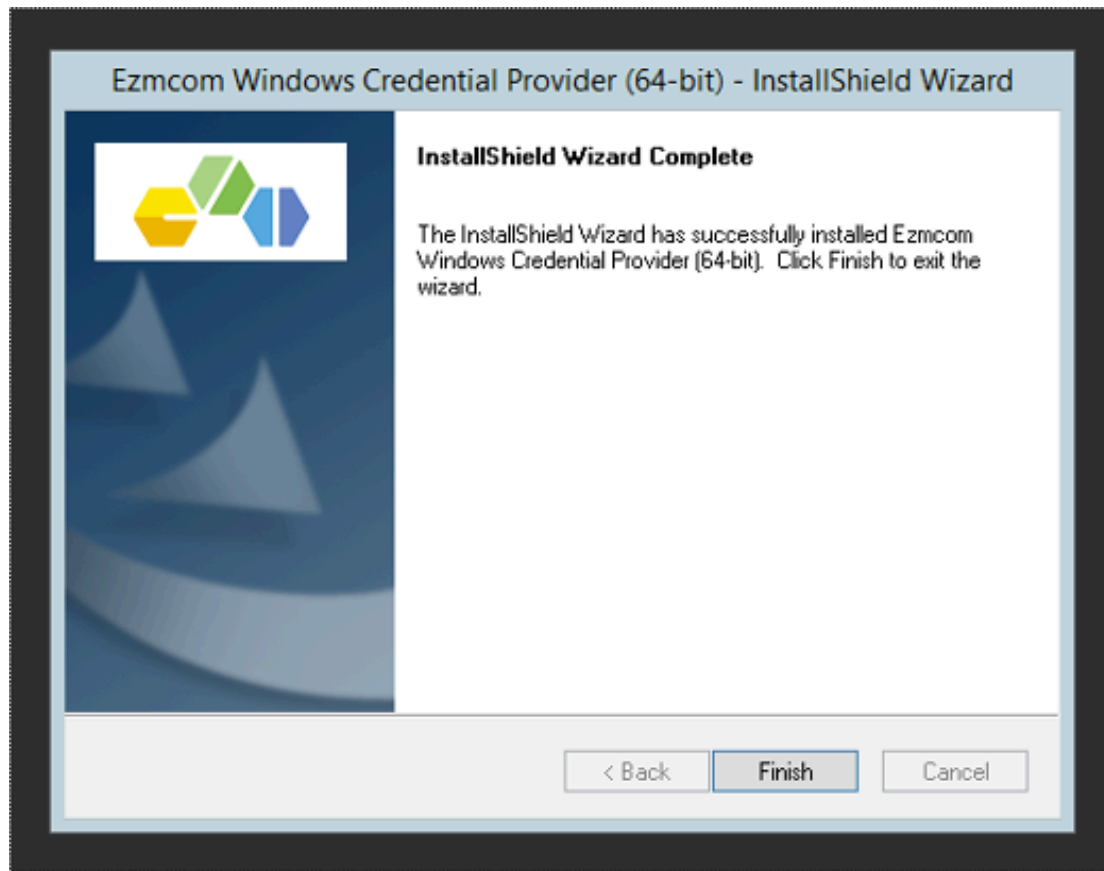
2. The installer will land on a form asking for these configurations:
  1. Hostname  
Hostname/IP address of EzIdentity Application Server. Eg: **ezidentity.ezmcom.com**
  2. Port  
HTTP Port of Authentication webapp server. Eg: **443**
  3. EzIdentity Domain ID  
EzIdentity Domain/Group ID. It indicates the 2FA authentication against which EzIdentity group/domain user.
3. Fill in the configurations and click on Next button.

**NOTE:**

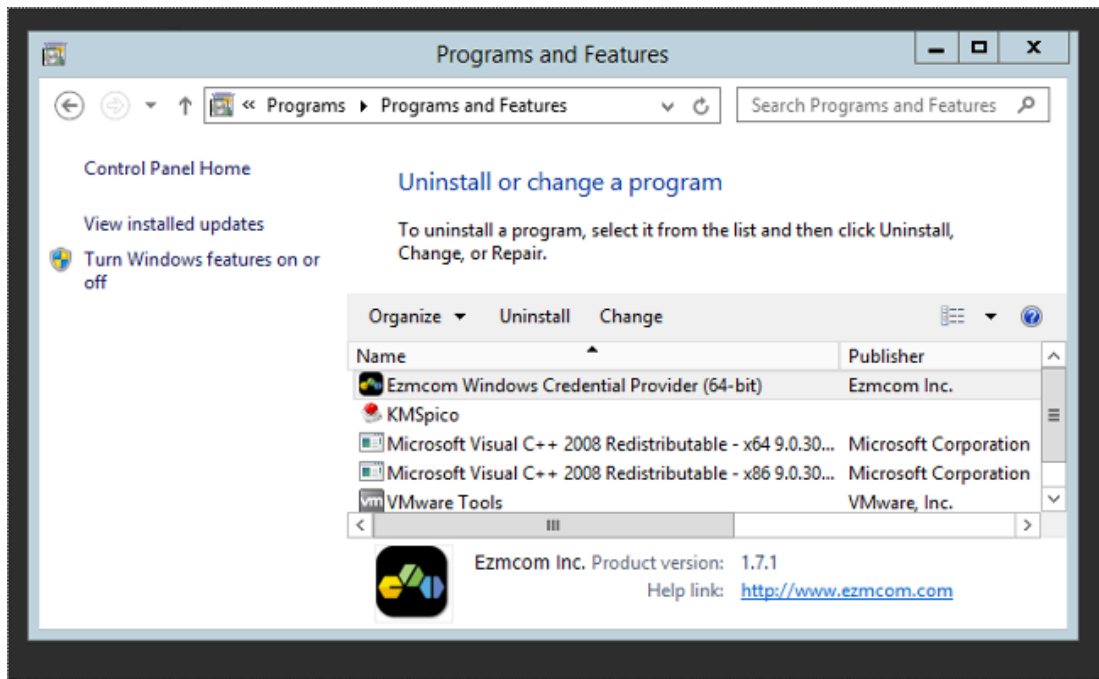
**Please contact your EZMCOM support representative or local partner for above details if you are not sure about it. The values depend on the installation and its configuration values.**



4. Click on Install button to complete the installation.



5. Click on Finish button to exit the installation wizard.



6. After the installation done, the program named **Ezmcom Windows Credential Provider** may be found under the Control Panel > Programs and Features.

# Terms & Conditions

---

## Confidentiality Statement

EZMCOM Inc. reserves all rights to the confidential information and intellectual property contained in this document. This document may contain information relating to the business, commercial, financial or technical activities of EZMCOM. This information is intended for the sole use of the recipient, as the disclosure of this information to a third party would expose EZMCOM to considerable disadvantage. No part of this document may be reproduced, stored in a retrieval system or transmitted in any form or by any process without prior written permission. This information is provided under an existing non-disclosure agreement with the recipient.

## Copyright Statement

This work is Copyright 2003-2013 by EZMCOM Inc. All Rights Reserved. No permission to reproduce or use EZMCOM copyright material is to be implied by the availability of that material in this or any other document.

All third party product and service names and logos used in this document are trade names, service marks, trademarks, or registered trademarks of their respective owners.

The example companies, organizations, products, people and events used in screenshots in this document are fictitious. No association with any real company, organization, product, person, or event is intended or should be inferred.

## Disclaimer

EZMCOM Inc. makes no, and does not intend to make any, representations regarding any of the products, protocols or standards contained in this document. EZMCOM does not guarantee the content, completeness, accuracy or suitability of this information for any purpose. The information is provided "as is" without express or implied warranty and is subject to change without notice. EZMCOM disclaims all warranties with regard to this information, including all implied warranties of merchantability and fitness for a particular purpose and any warranty against infringement. Any determinations and/or statements made by EZMCOM with respect to any products, protocols or standards contained in this document are not to be relied upon.

## Liability

In no event shall EZMCOM be liable for any special, incidental, indirect or consequential damages whatsoever (including, without limitation, damages for loss of business profits, business interruption, loss of business information, or any other pecuniary loss) whether in an action of contract, negligence or other tortious action, rising out of or in connection with the use or inability to use this information or the products, protocols or standards described herein, even if EZMCOM has been advised of the possibilities of such damages

