



EZMCOM Outlook Web Access (OWA) agent Installation Guide

Document Number

EZM_OWA_00

Issue Status

1.1

Issue Date

12 May 2016

Version 1.2.2

Prepared for

EZMCOM Software Product administrator

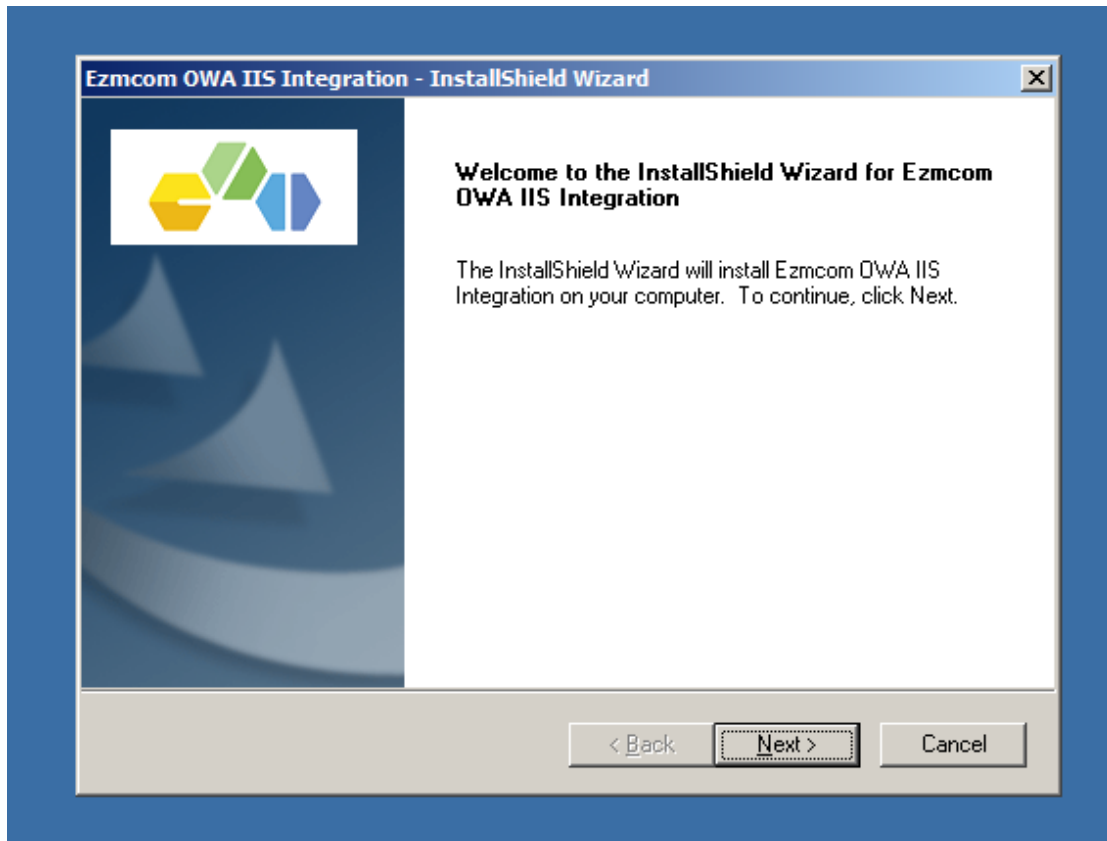
Prepared byEZMCOM Inc.
4701 PATRICK HENRY DR, SANTA CLARA, CA, 950541863, US.Tel: +1 510 396 3894
+60 (0)12 570 1114Email: info@ezmcom.com

Copyright © 2016 by EZMCOM

This work is copyright. Other than as permitted by law, no part of this document may be reproduced, stored in a retrieval system or transmitted in any form or by any process without prior written permission.

Installation steps:


1. Run the installer exe file to start the installation wizard, then follow the instructions on screen.




Ezmcom OWA IIS Integration - InstallShield Wizard
X

Setup OWA IIS Integration Configuration

Please enter requested data.



EZMCOM
CONVENIENTLY SECURE



Important: Please obtain all configuration values from EZMCOM Inc. support.

Host:

Auth. Host:

Select OWA Website(s):

Default Web Site
 Exchange Back End

SAML ID: * (Alphanumeric only)

Auth. Key:

Bypass Level:


No Bypass
 Bypass Unregistered
 Bypass All

InstallShield _____


Ezmcom OWA IIS Integration - InstallShield Wizard
X

Setup OWA IIS Integration Configuration

Please enter requested data.



EZMCOM
CONVENIENTLY SECURE



Important: Please obtain all configuration values from EZMCOM Inc. support.

Host:

Auth. Host:

Select OWA Website(s):

Default Web Site
 Exchange Back End

SAML ID: * (Alphanumeric only)

Auth. Key:

Bypass Level:

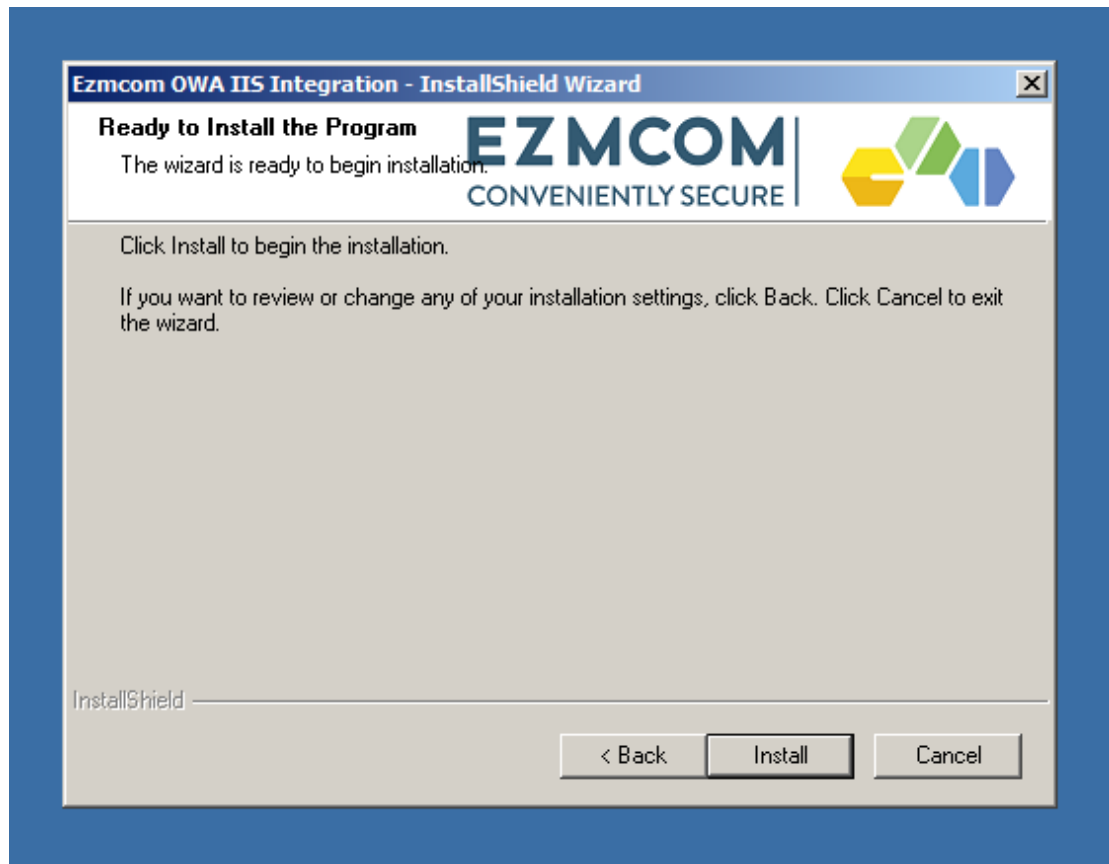
No Bypass

InstallShield _____

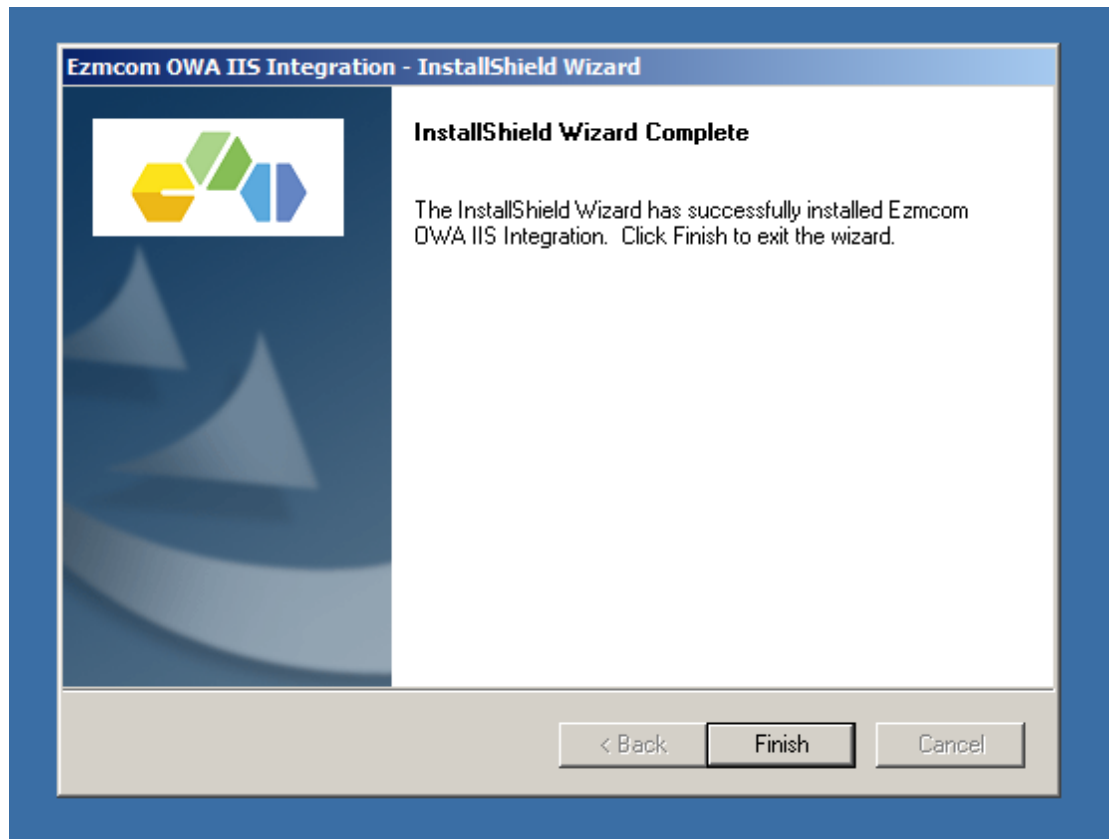
2. The installer will land on a form asking for these configurations:
 1. Host
Host/IP address of EzIdentity Application Server. Must be in the format of <HOST/IP>:<PORT>. Eg:
192.168.2.123:443
 2. Auth. Host
Host/IP address of Authentication webapp server. Must be in the format of <HOST/IP>:<PORT>. Eg:
192.168.2.123:443
 3. OWA Website
Select website which the agent will be installed.
 4. SAML ID
Group SAML Identifier. It indicates the 2FA authentication against which EzIdentity group/domain user.
 5. Auth. Key
The Authentication key connects multiple OWA instance.
IMPORTANT NOTE: If the OWA installation is across multiple IIS, the Auth. Key must be copy and reuse in each and every OWA IIS Integration installation.
 6. Bypass Level
Indicate if the 2FA authentication bypass parameter:
 - No Bypass – All user will required to do 2FA authentication.
 - Bypass Unregistered – Only user who is registered or has an activated token in EzIdentity, will required to do 2FA authentication.
 - Bypass All – 2FA authentication will be skipped for all user.
3. Fill in the configurations and click on Next button.

NOTE:

Please contact your EZMCOM support representative or local partner for above details if you are not sure about it. The values depend on the installation and its configuration values.



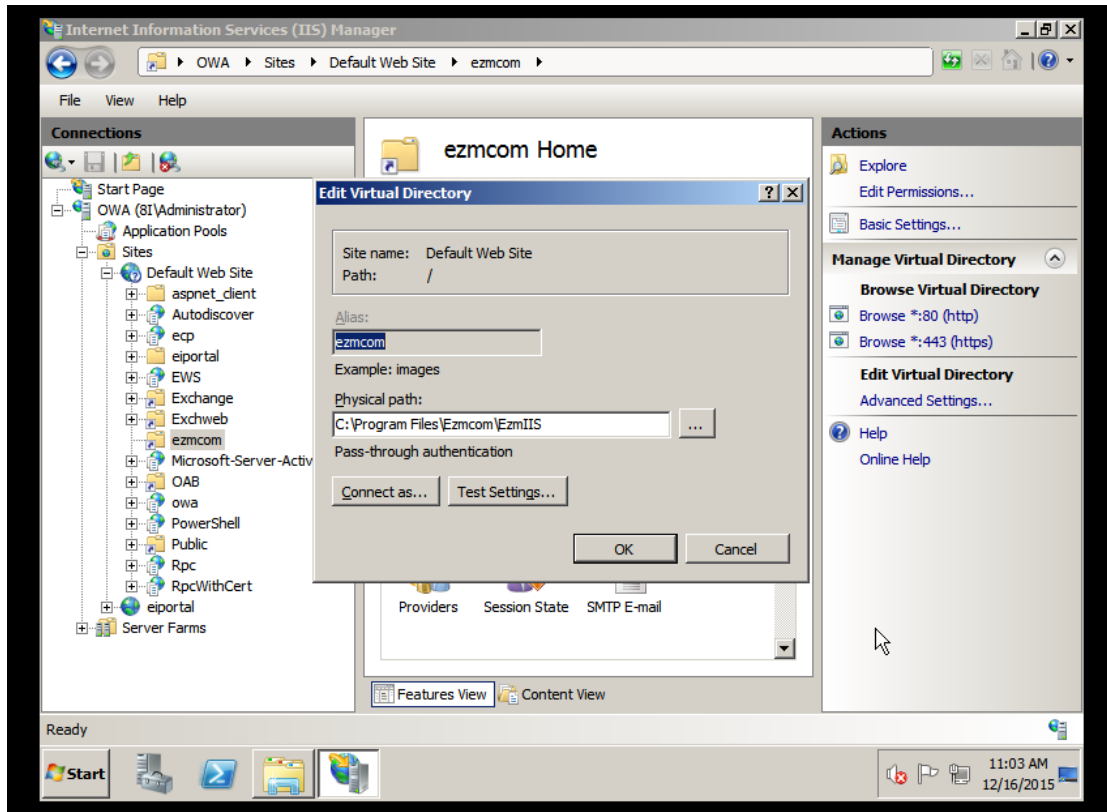
4. Click on Install button to complete the installation.



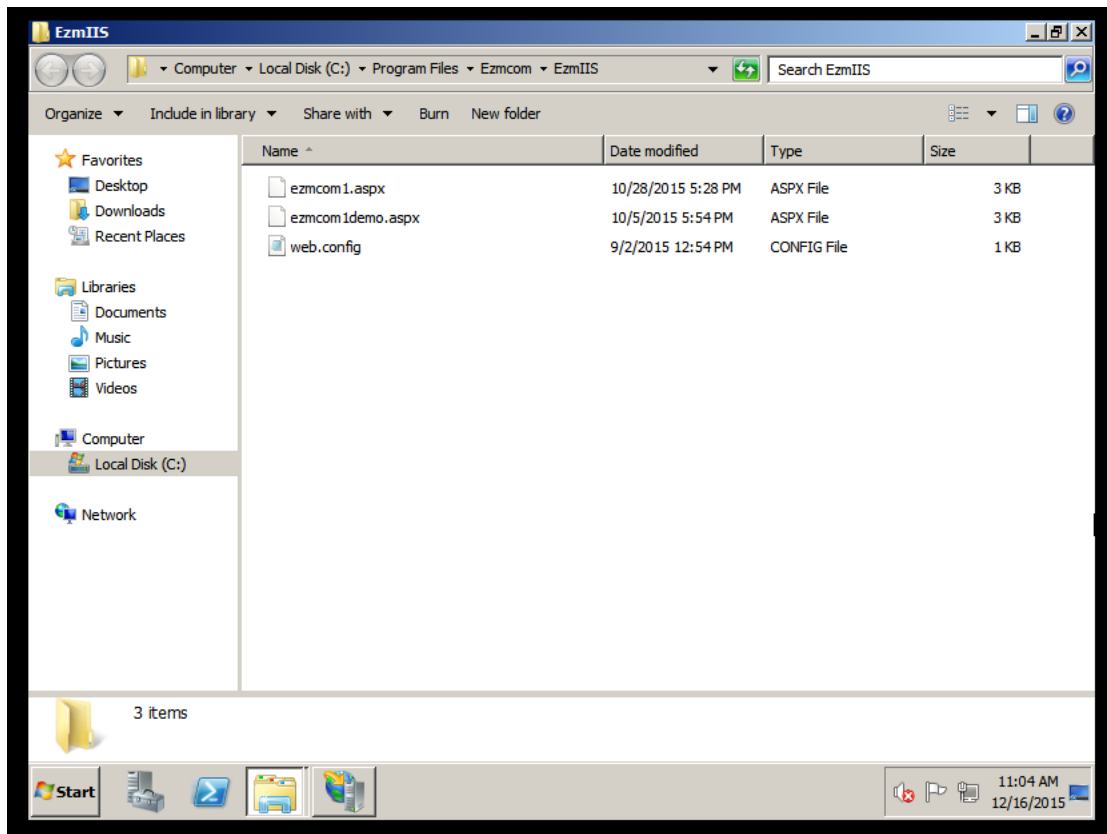
5. Click on Finish button to exit the installation wizard.

Post-install verification steps:

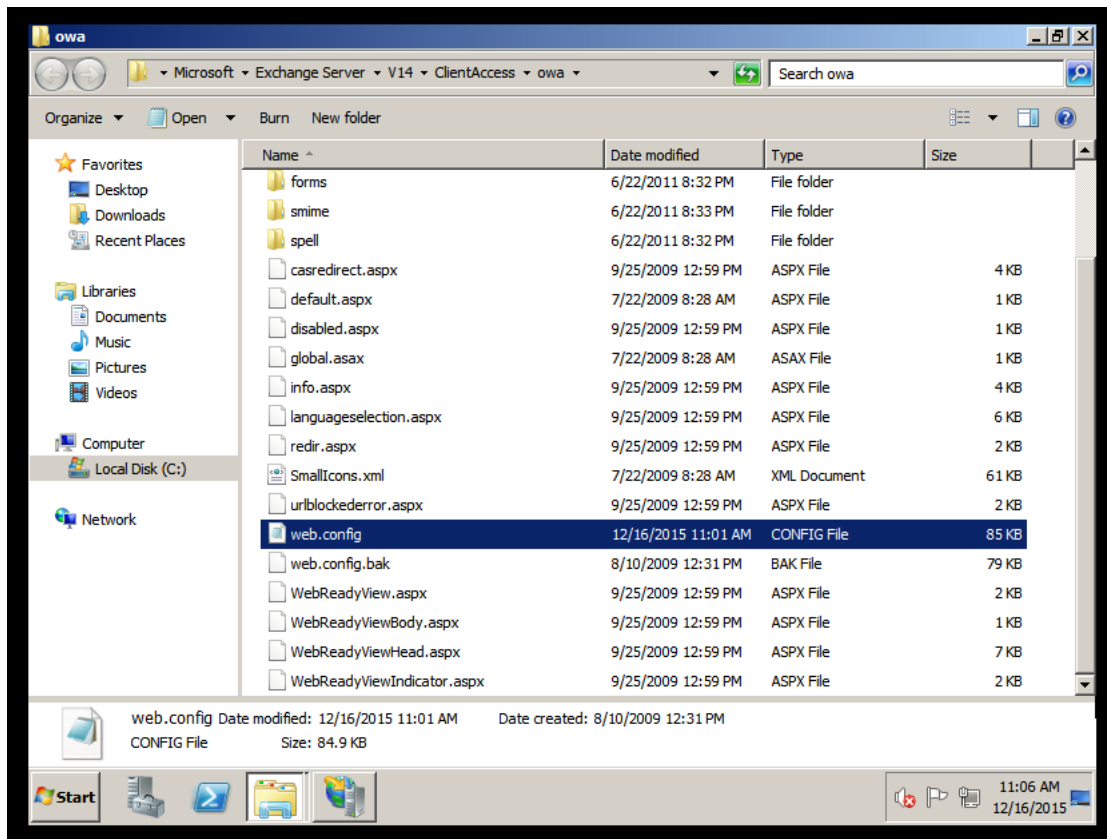
Assumption: The Default Web Site has been selected during installation.



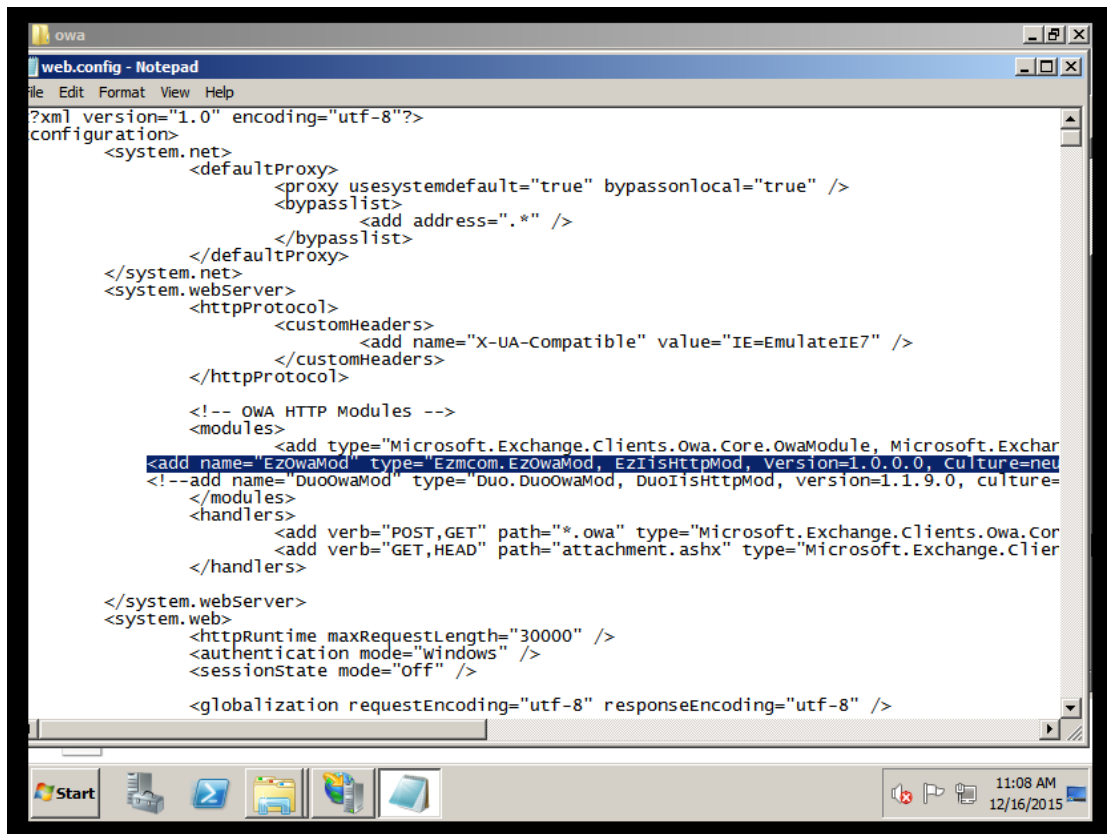
1. Open IIS Manager, under Sites > Default Web Site, an **ezmcom** virtual directory should exist and it's physical path should pointing to: **C:\Program Files\Ezmcom\EzmIIS**.



2. Browse to the physical directory above and validate if this file can be located:
 - ezmcom1.aspx



3. In IIS Manager, under Sites > Default Web Site, explore the **owa** virtual directory, open the web.config file.

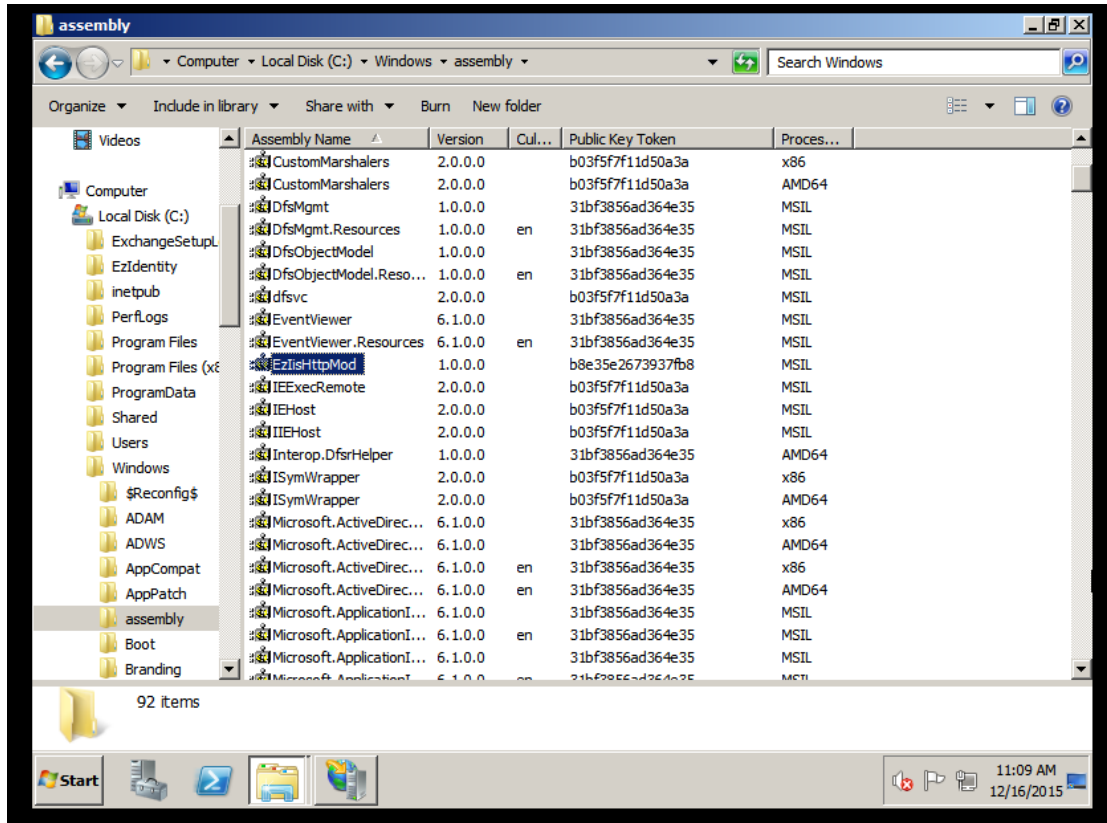


4. Validate for the existence of the example content below:

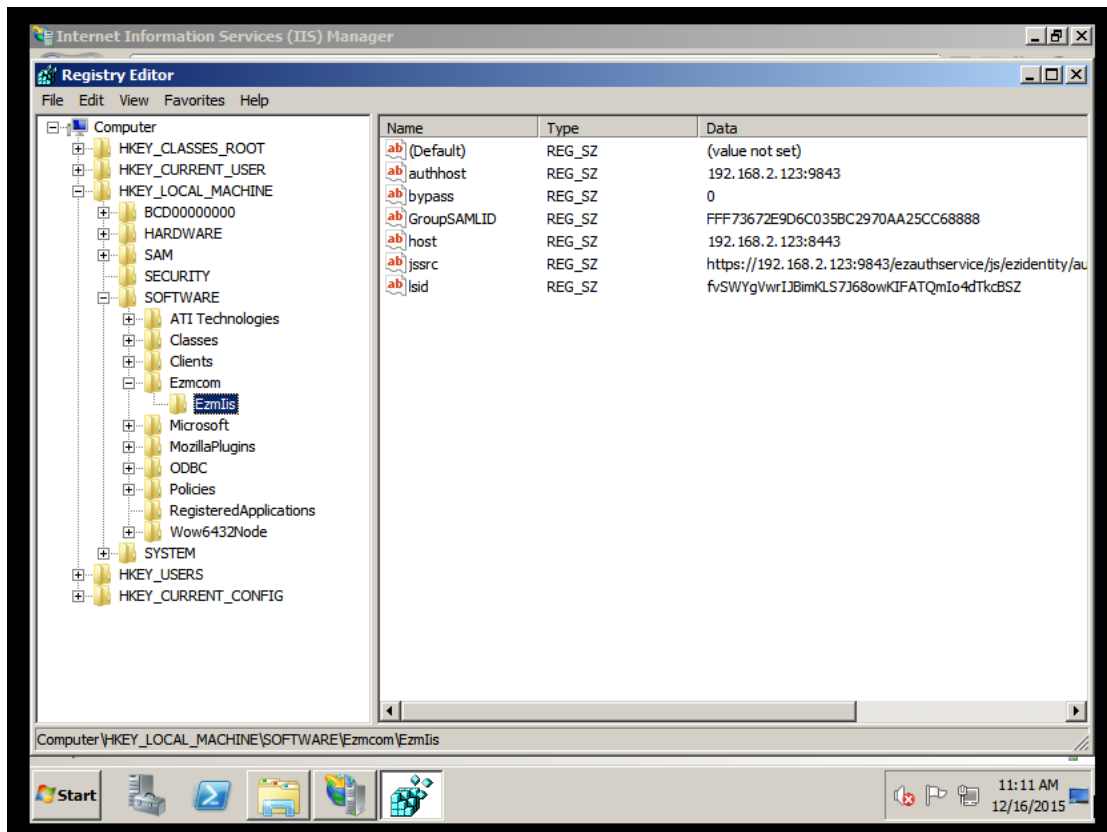
```
<?xml version="1.0" encoding="utf-8"?>
<configuration>
...
...
...
<system.Webserver>
  <modules>
    <add name="EzOwaMod" type="Ezmcom.EzOwaMod,
    EzIisHttpMod, Version=1.0.0.0, Culture=neutral,
    PublicKeyToken=b8e35e2673937fb8,
    processorArchitecture=MSIL" preCondition="" />
    ...
  </modules>
...
</system.Webserver>
...
...

```

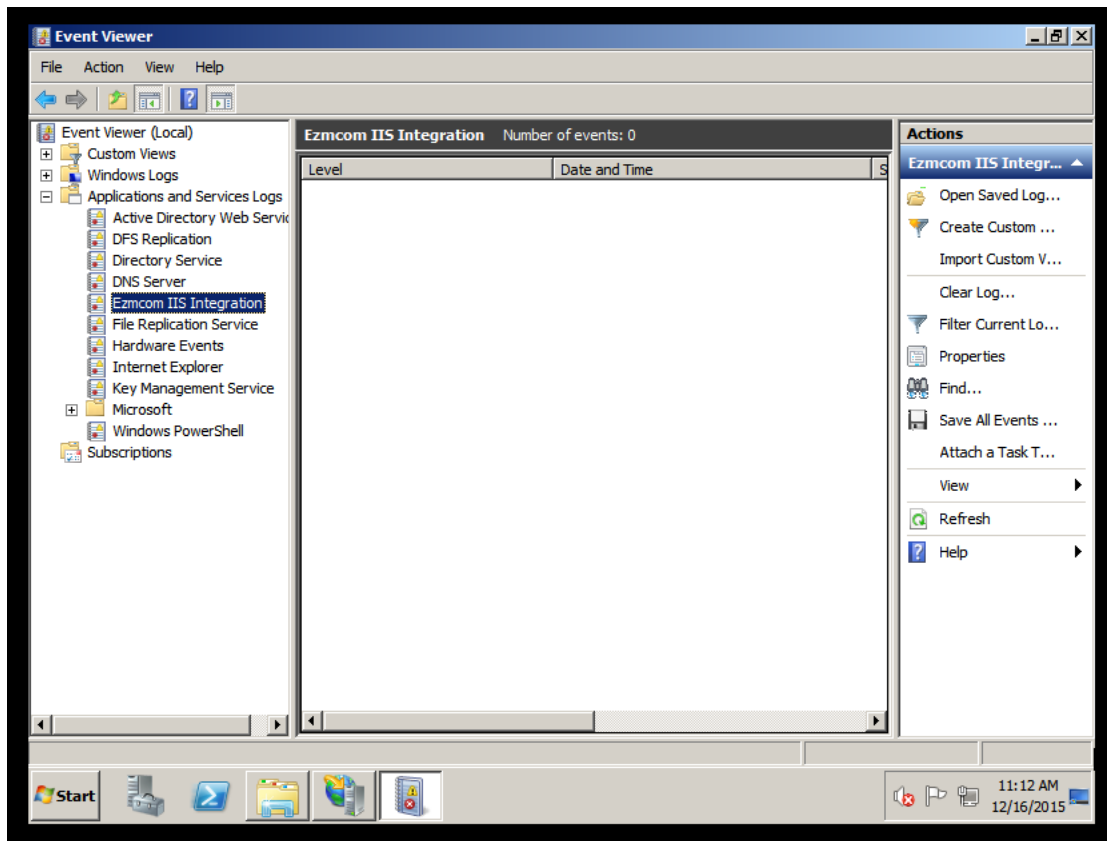
...
</configuration>



5. Explore the **C:\windows\assembly**. The file **EzIisHttpMod.dll** should exist with the same public key token value in the previous step.



6. In Windows Registry, the following keys (6) should exist under
HKEY_LOCAL_MACHINE\SOFTWARE\Ezmcom\EzmIis
- authhost
 - bypass
 - GroupSAMLID
 - host
 - jssrc
 - lsid



7. In Event Viewer, under **Applications and Services Logs**, a new log called **Ezmcom IIS Integration** should be created.

Terms & Conditions

Confidentiality Statement

EZMCOM Inc. reserves all rights to the confidential information and intellectual property contained in this document. This document may contain information relating to the business, commercial, financial or technical activities of EZMCOM. This information is intended for the sole use of the recipient, as the disclosure of this information to a third party would expose EZMCOM to considerable disadvantage. No part of this document may be reproduced, stored in a retrieval system or transmitted in any form or by any process without prior written permission. This information is provided under an existing non-disclosure agreement with the recipient.

Copyright Statement

This work is Copyright 2003-2013 by EZMCOM Inc. All Rights Reserved. No permission to reproduce or use EZMCOM copyright material is to be implied by the availability of that material in this or any other document.

All third party product and service names and logos used in this document are trade names, service marks, trademarks, or registered trademarks of their respective owners.

The example companies, organizations, products, people and events used in screenshots in this document are fictitious. No association with any real company, organization, product, person, or event is intended or should be inferred.

Disclaimer

EZMCOM Inc. makes no, and does not intend to make any, representations regarding any of the products, protocols or standards contained in this document. EZMCOM does not guarantee the content, completeness, accuracy or suitability of this information for any purpose. The information is provided "as is" without express or implied warranty and is subject to change without notice. EZMCOM disclaims all warranties with regard to this information, including all implied warranties of merchantability and fitness for a particular purpose and any warranty against infringement. Any determinations and/or statements made by EZMCOM with respect to any products, protocols or standards contained in this document are not to be relied upon.

Liability

In no event shall EZMCOM be liable for any special, incidental, indirect or consequential damages whatsoever (including, without limitation, damages for loss of business profits, business interruption, loss of business information, or any other pecuniary loss) whether in an action of contract, negligence or other tortious action, rising out of or in connection with the use or inability to use this information or the products, protocols or standards described herein, even if EZMCOM has been advised of the possibilities of such damages

