

## Application Note

### Series 5000 firmware upgrade procedure

Revision 1.2.1    January 2015



## Contents

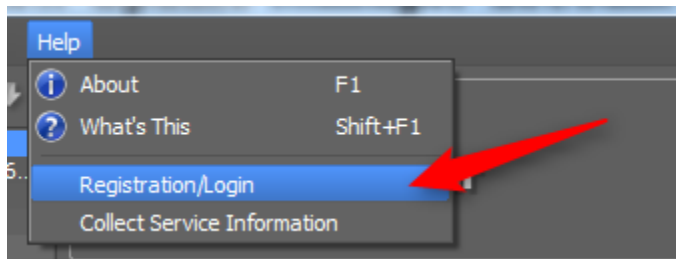
<b>1 REGISTER A NEW UPDATE MANAGER ACCOUNT .....</b>	<b>3</b>
<b>2 LOGGING IN WITH AN EXISTING ACCOUNT .....</b>	<b>4</b>
<b>3 HOW TO INSTALL AND USE THE OFFLINE DATABASE .....</b>	<b>5</b>
<b>4 UPDATING FIRMWARE BY USING SMARTUPDATE.....</b>	<b>6</b>
<b>5 UPDATING FIRMWARE BY USING RPG USB ADAPTER .....</b>	<b>7</b>

# 1 Register a new Update Manager account

1. Open the APPolo Control GUI by clicking on the desktop icon.



2. Click on Help > Registration/Login.



3. Select "Create a new account" and click on "Next".

A screenshot of the 'Registration' window in the APPolo Control GUI. The window title is 'Registration' and it contains a form titled 'Create a new account'. The form has the following fields: 'Name', 'Title', 'Company', 'Phone', 'Email', and 'Reg. Key'. Below the fields is a checkbox labeled 'Subscribe for email information about new updates' which is checked. At the bottom right of the window are 'Save' and 'Cancel' buttons.

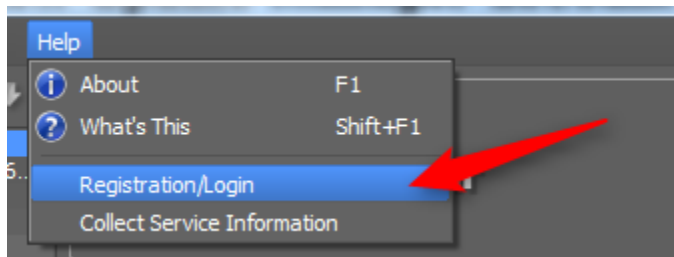
4. Type in your contact information and click on "Save". A request email will be send to LYNX Support automatically.
5. After your account has been activated you will receive an email with your login information.

## 2 Logging in with an existing account

1. Open the APPolo Control GUI by clicking on the desktop icon.



2. Click on Help > Registration/Login.



3. Select "Enter a Registration-Key" and click on "Next".

A screenshot of the "Registration" dialog box. The dialog has a title bar with a question mark and a close button. The main content area is titled "Registration" and contains the heading "Enter a Registration-Key". Below this heading are two input fields: "Email" and "Reg. Key". A note below the fields states: "NOTE: The application needs to be restarted for changes to become effective." At the bottom of the dialog are "Save" and "Cancel" buttons.

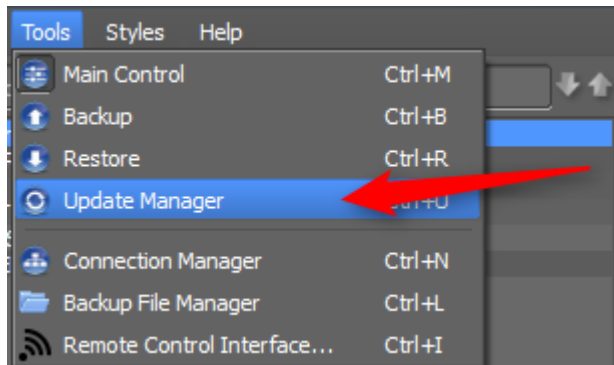
4. Type in your login information and click on "Save".
5. Restart the APPolo Control GUI.

### 3 How to install and use the offline database

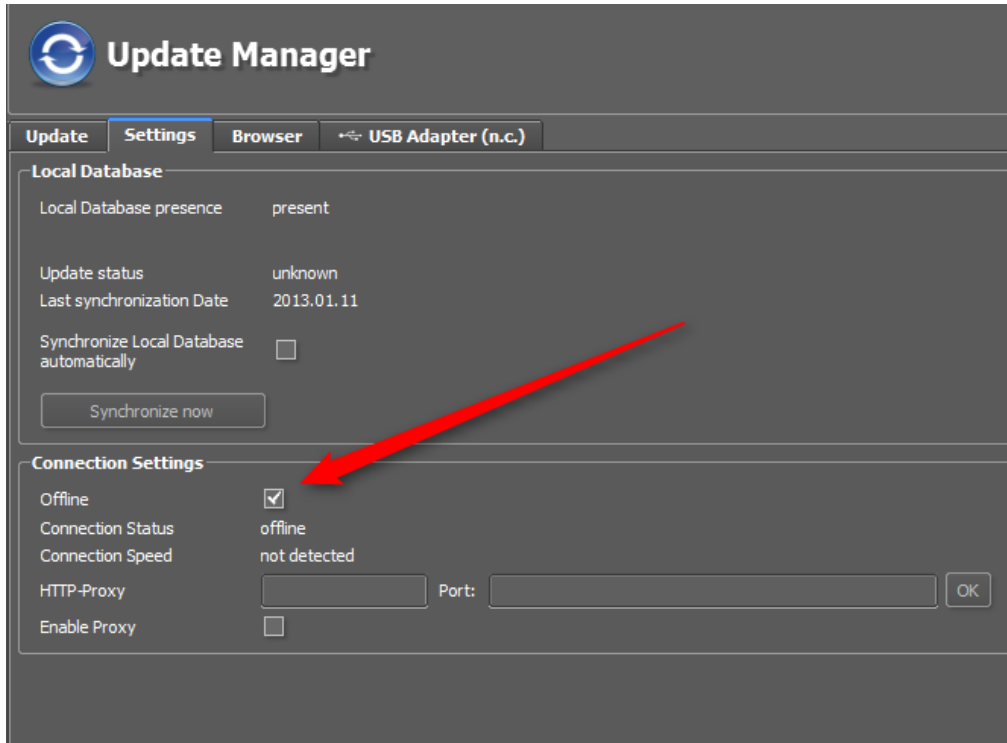
1. Use the following link in your web browser to open the Lynx APPolo Control download page:  
[http://download.lynx-technik.com/public/c3\\_local/](http://download.lynx-technik.com/public/c3_local/)
2. Download the latest version of the programmer database.
3. Install the offline database by double-clicking the setup .exe-file.  
**(Note: The APPolo Control GUI has to be installed first.)**
4. Open the APPolo Control GUI by clicking on the desktop icon.



5. Open the Update Manager with Tools > Update Manager.



6. Click on the Settings - TAB and enable the checkbox "Offline" as you can see in the picture below.



## 4 Updating Firmware by using SmartUpdate

### Requirements:

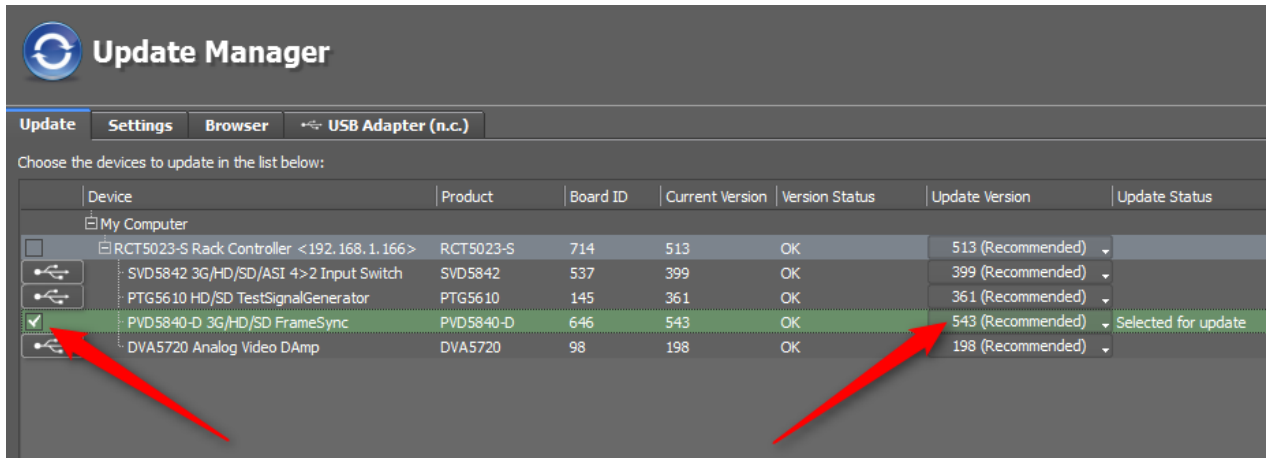
- APPolo Control GUI 6.2.0 or later with Update Manager activated (see chapter 1 and 2).
- RCT5023 or RCT5023-G Controller

If you open the Update Manager in the APPolo Control GUI (Tools > Update Manager) you will find two different types of icons on the left side of every device in the device tree. A checkbox indicates that the device supports the SmartUpdate functionality. The USB icon means that this device has to be updated by using the RPG USB adapter (see chapter 5).

In order to do a SmartUpdate the rack controller has to be a RCT5023 attached to a Server\_5023 or "My Computer".

## Updating a device via SmartUpdate:

1. Select one or more device(s) by enabling the checkbox(es).



2. Use the dropdown selection to choose an update version. (The latest version is selected as default and indicated as "Recommended").
3. Click on "Start Update" on the bottom right to start the update process.
4. After the update process has been finished the progress bar will turn green.

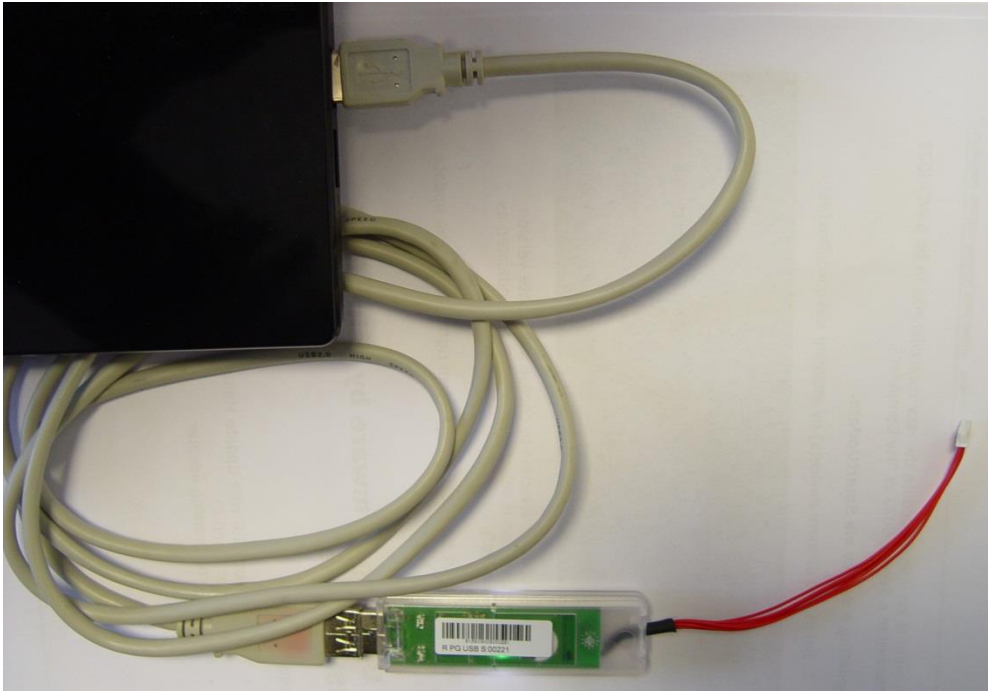
## 5 Updating Firmware by using RPG USB adapter

### Requirements:

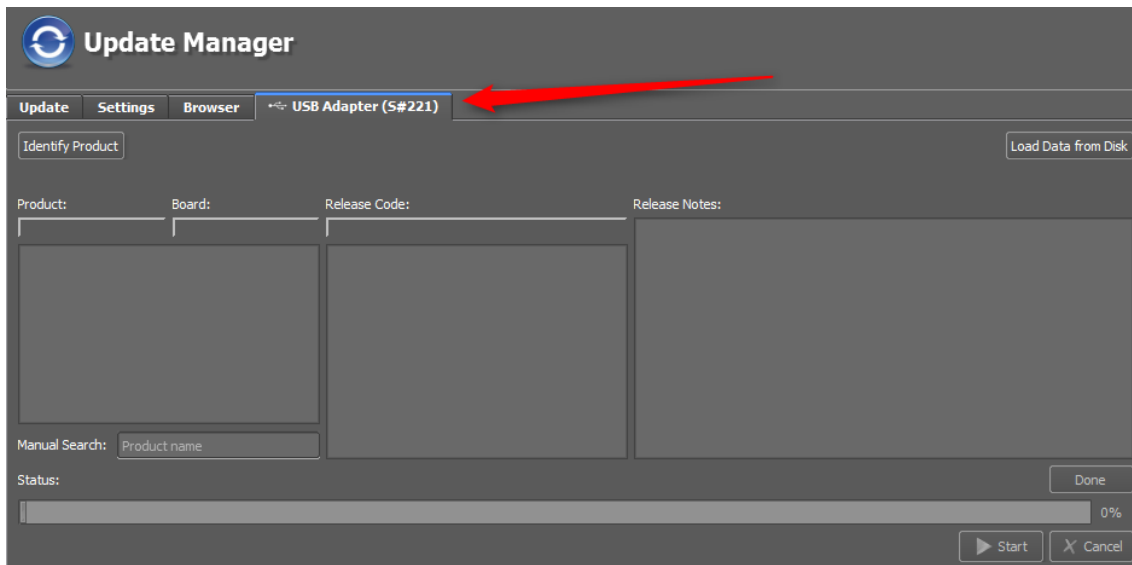
- APPolo Control GUI 6.2.0 or later with Update Manager activated (see chapter 1 and 2).
- RPG USB programming adapter

## Updating a device via RPG USB adapter:

1. Connect the RPG USB adapter to your laptop or PC.

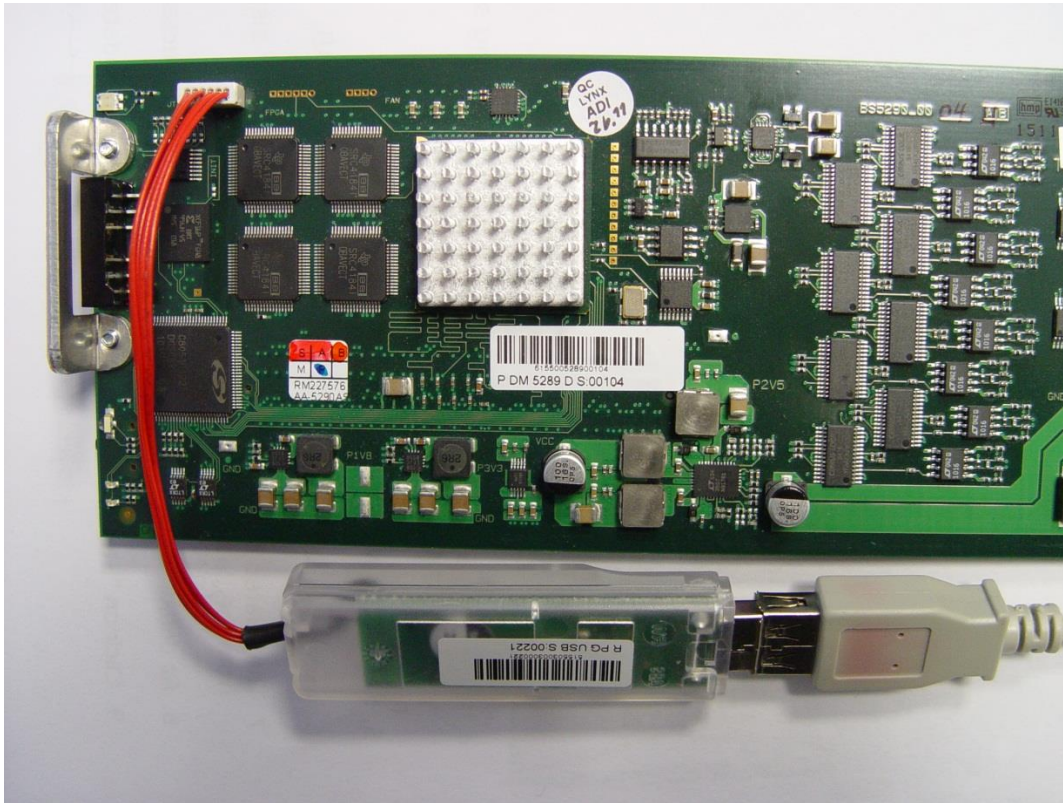


2. Open the USB Adapter – Tab in the Update Manager.

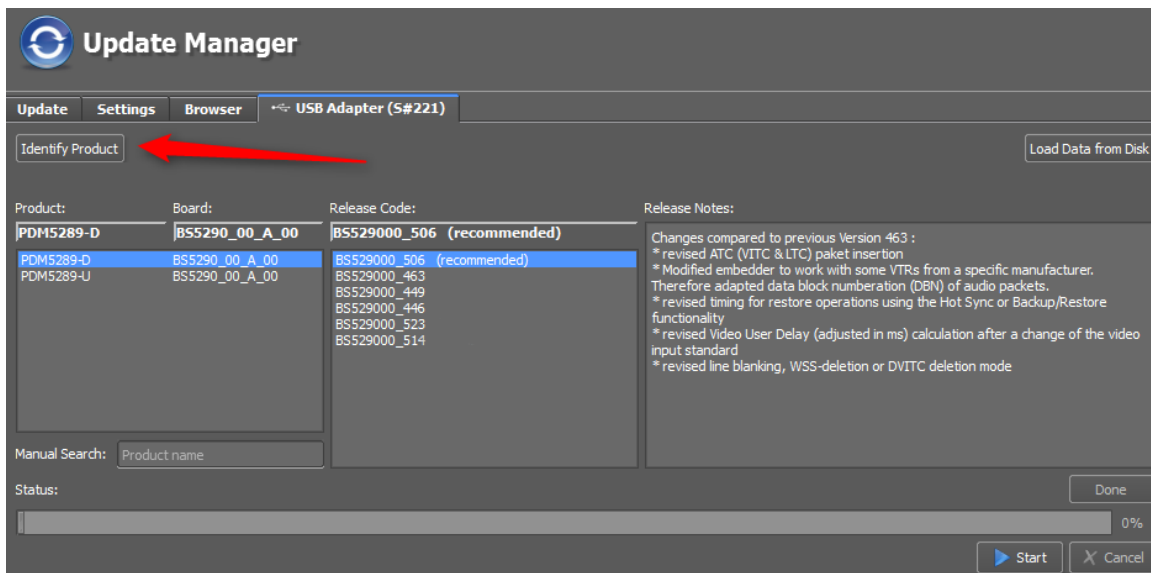


3. Pull the card out of the rack frame as much as you can reach the white programming socket.





4. Plug the RPG USB adapter to the white programming socket as you can see in the picture.
5. Plug the device back into the rack frame.
6. Click on “Identify Product” in the USB Adapter – Tab of the Update Manager.



7. The related firmware versions will be automatically displayed from the database.
8. As default the latest (recommended) version is selected.
9. Click on “Start” on the bottom right to start the update process.
10. After the update process has been finished the progress bar will turn green.

