

Application Note

Changing APPolo Control configuration settings in GUI and LYNX servers

Revision 1.1 April 2014



Following you will find some step by step instructions which will explain how configuration settings can be changed in the APPolo Control System.

1 Changing APPolo Control GUI configuration settings

- Open the APPolo Control GUI.
- Click on “MyComputer” in the left device tree.

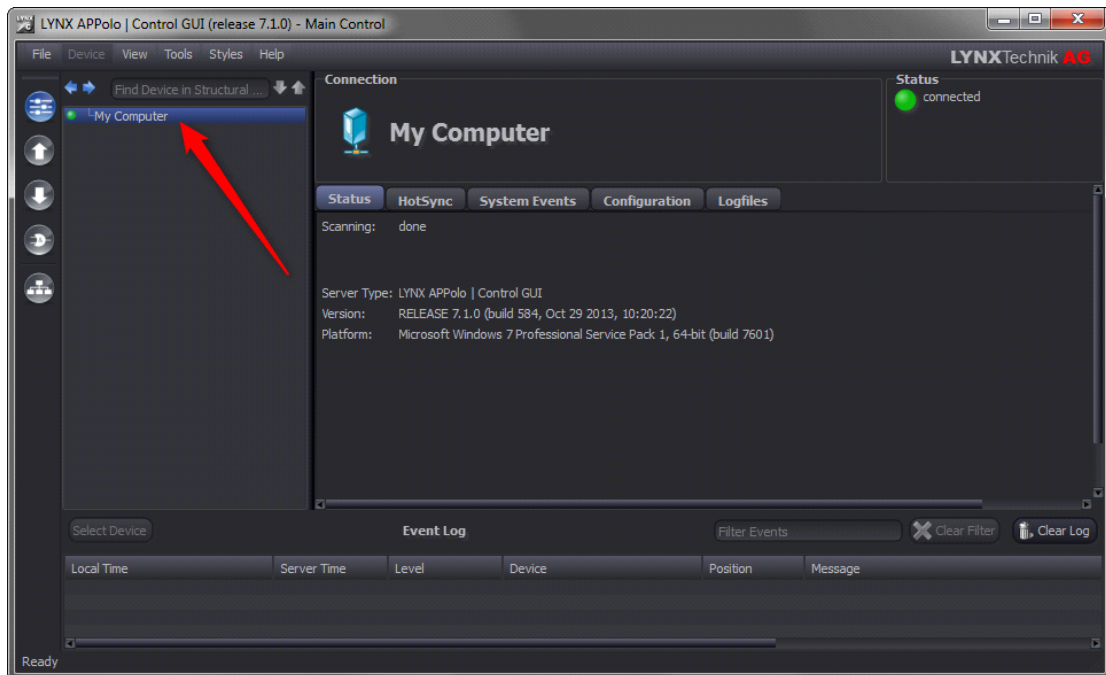


Figure 1 Select MyComputer

- Click on the “Configuration-TAB” on the right side.

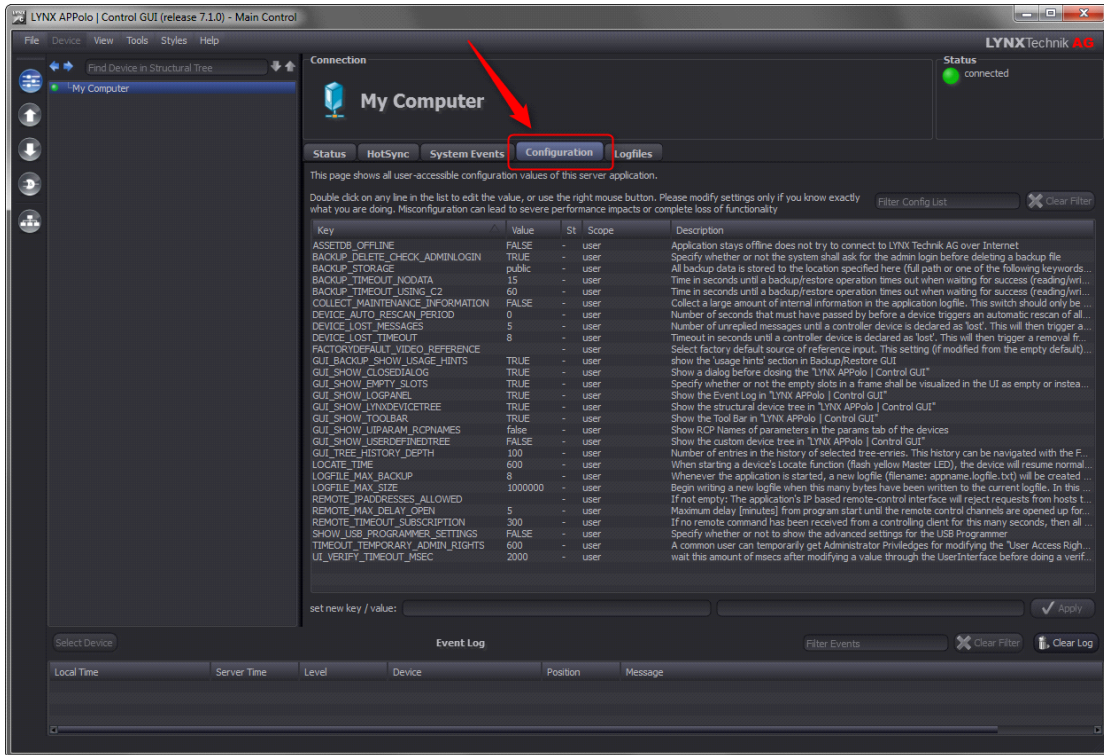


Figure 2 Open GUI Configuration-TAB

- Type in the key / value – pair in the two text fields on the bottom (see Figure 3).
 - Key
 - Value
 - Apply settings with the “Apply”-Button.

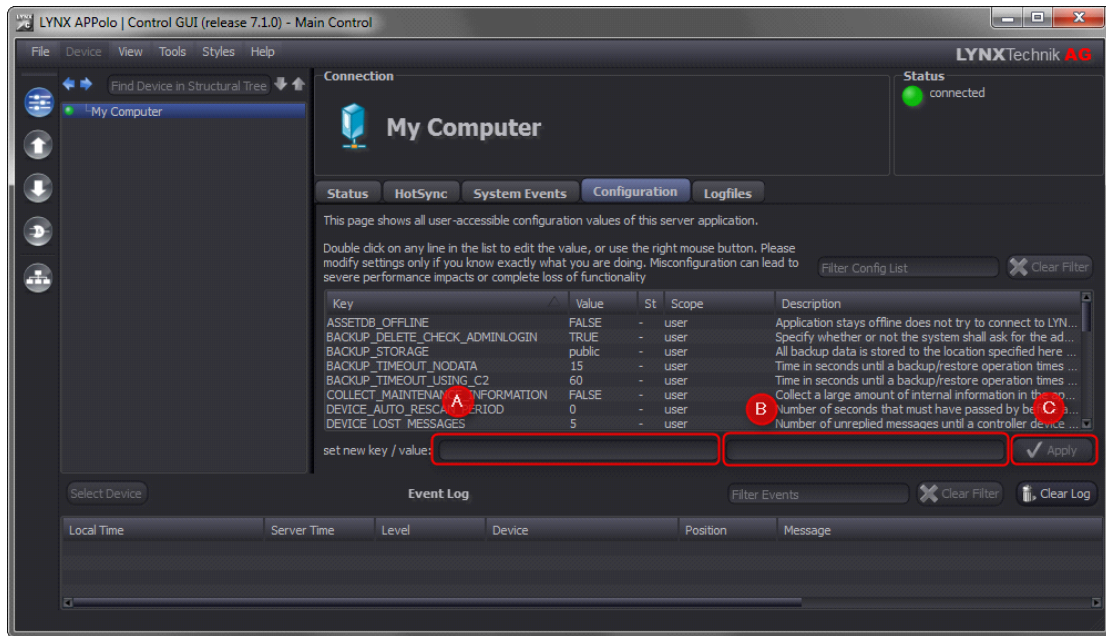


Figure 3 Enter key/value – pair

- Restart the APPolo Control GUI (close and open).
- Now the configuration setting is active and can be found in the configuration-key list on the “Configuration” – TAB.

2 Changing APPolo Control Server configuration settings

- Open the APPolo Control GUI.
- Click on the IP address of the LYNX server on which the configuration setting have to be applied.

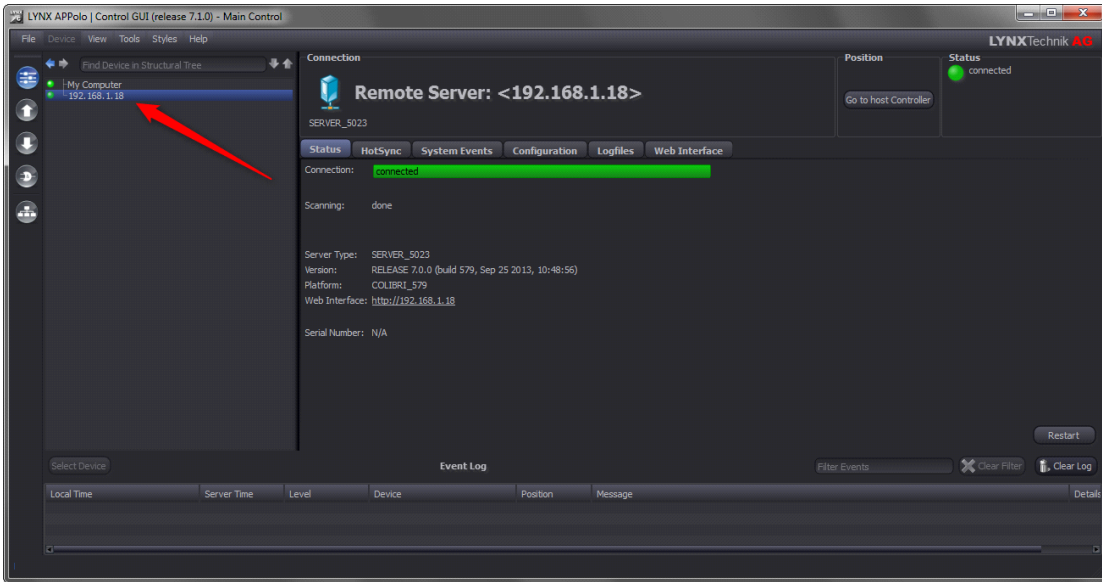


Figure 4 Select LYNX Server

- Click on the “Configuration”-TAB on the right side.

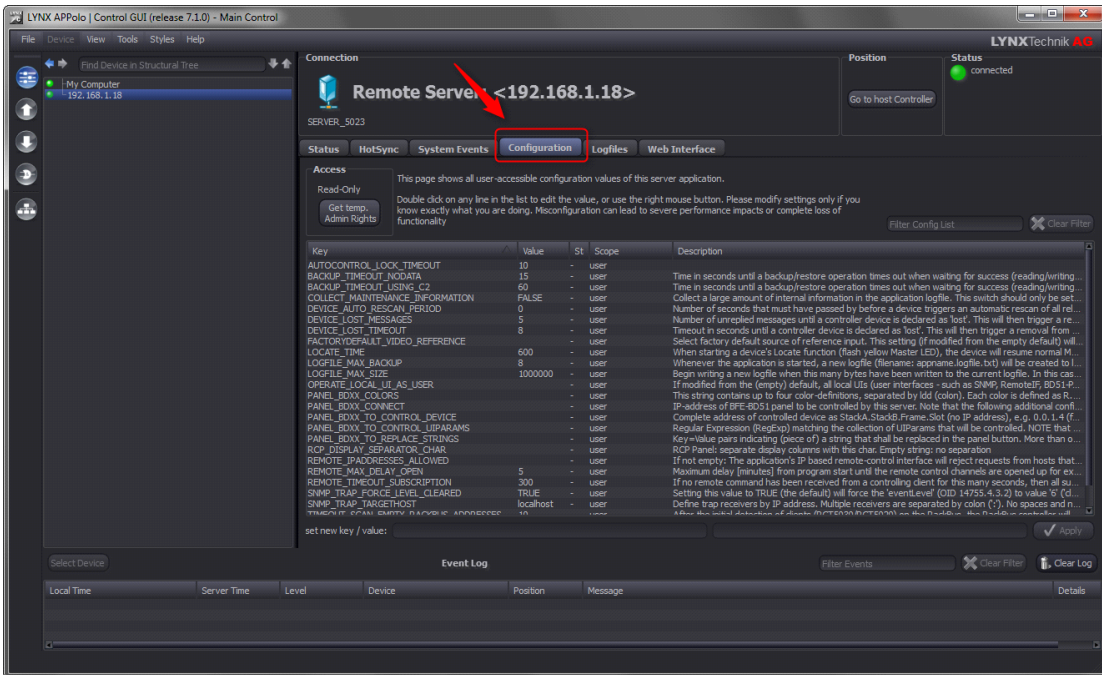


Figure 5 Open LYNX server configuration TAB

- Type in the key / value – pair in the two text fields on the bottom (see Figure 6).
 - Key
 - Value
 - Apply settings with the “Apply”-Button

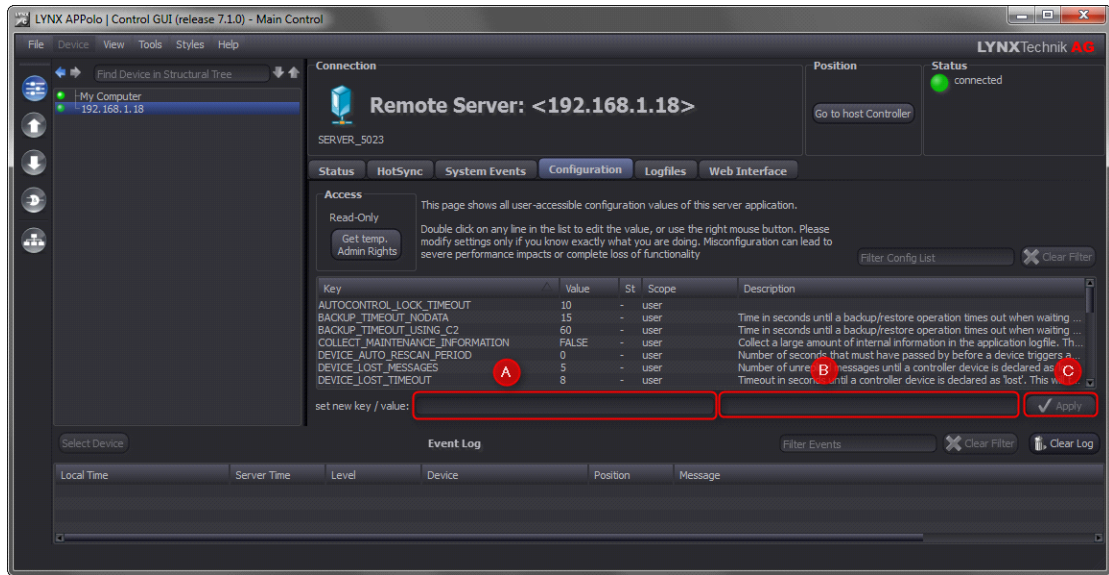


Figure 6 Enter key / value - pair

- Restart the LYNX server by clicking on the status-TAB and then on the “Restart”-Button (see Figure 7).

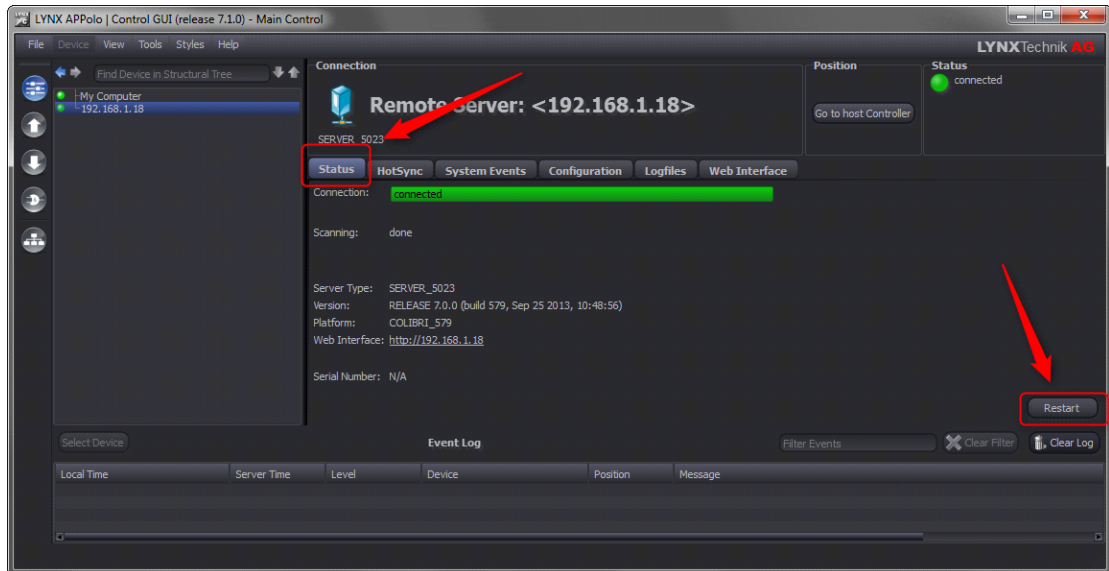


Figure 7 Restart LYNX server

- Now the configuration setting is active and can be found in the configuration-key list on the “Configuration” – TAB.