

## **Application Note**

### **RCT5031 IP-address change via USB**

**Revision 1.0      June 2013**

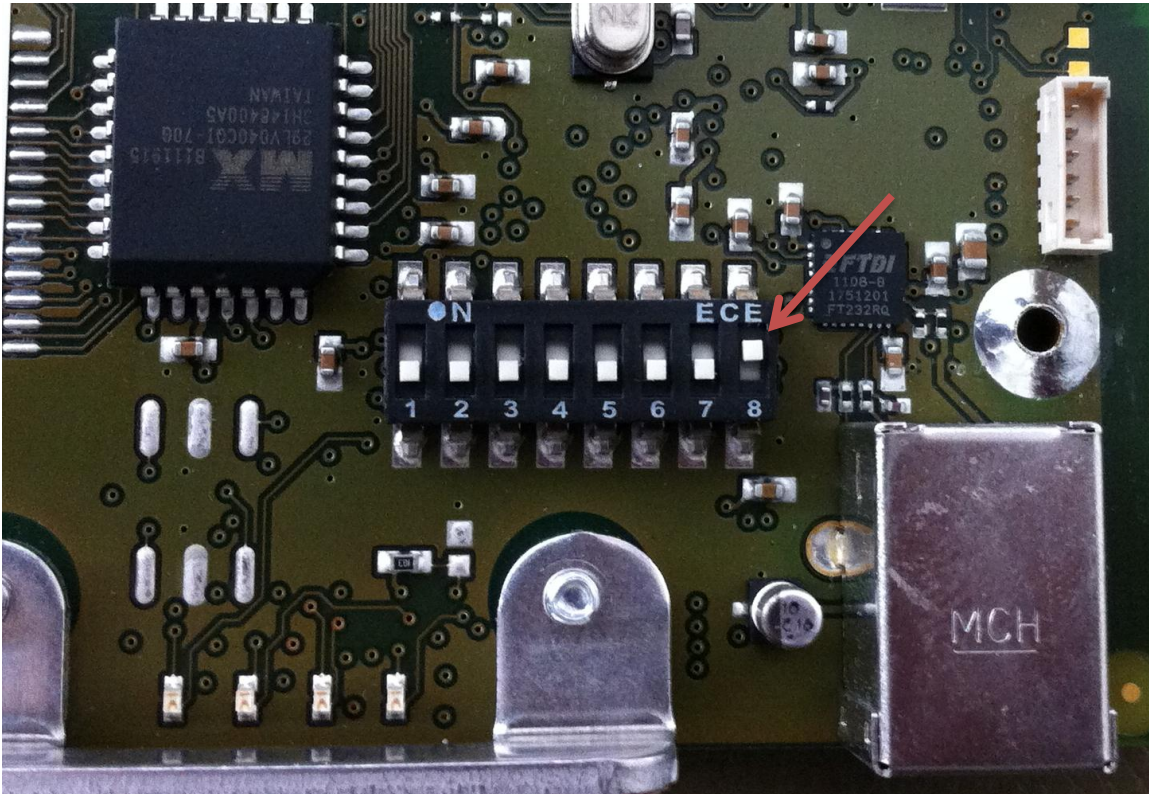


## Introduction

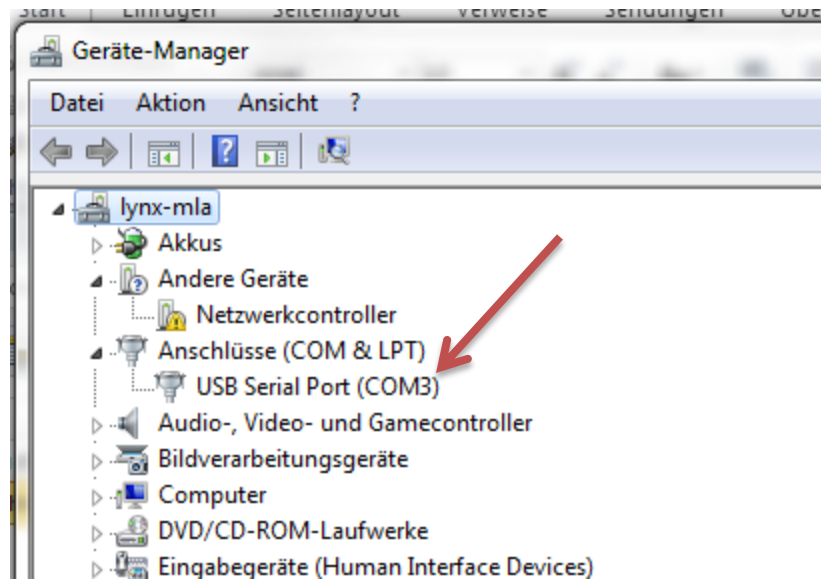
Sometimes you need to change or check the IP-address of your RCT5031 controller. The easy way is via the Web-Interface. But there is also a way to do this via USB, although you have to follow a few steps more, as described in this Application Note.

## Setup the RCT5031 card

1. Set the DIP switch 8 to “ON” state.

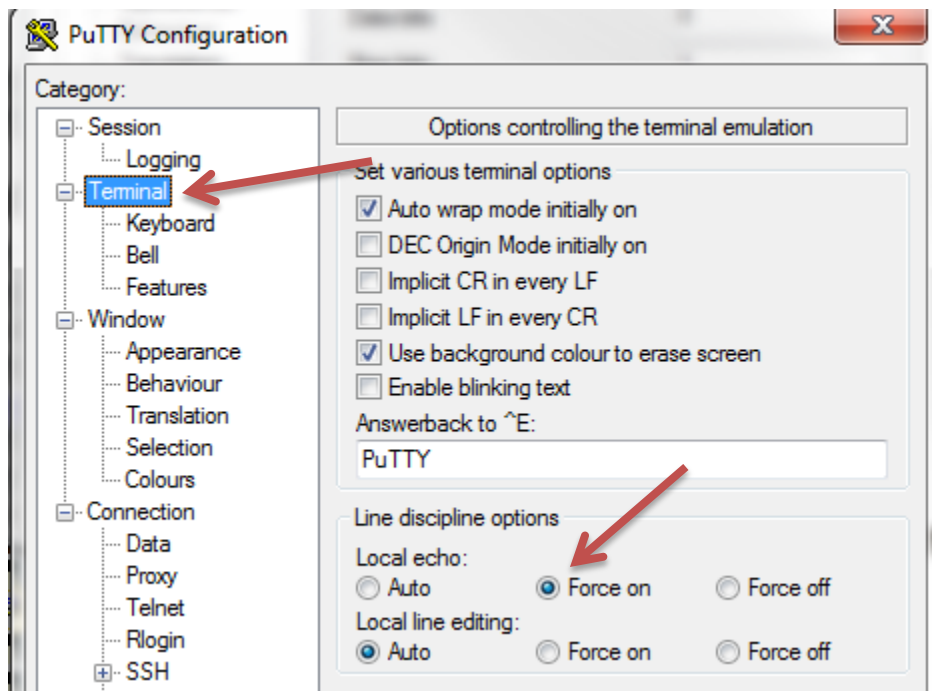
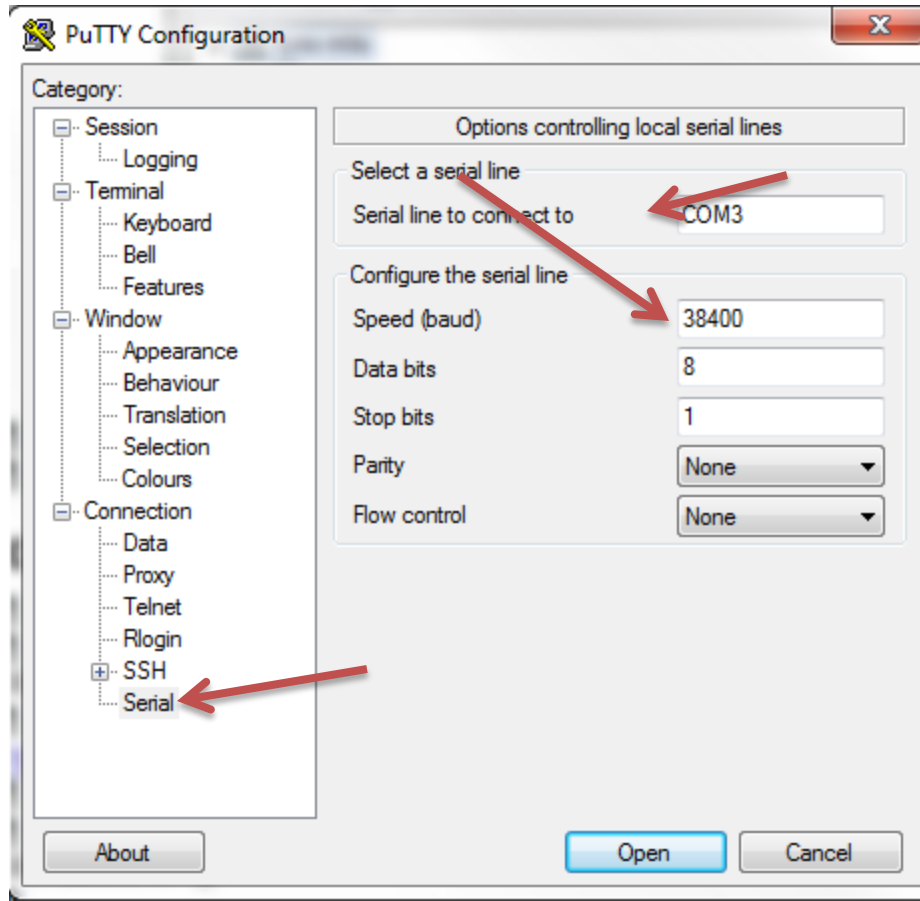


2. Connect the controller via USB to a Windows PC as shown on the cover page.
3. Wait for driver installation and check the device manager for the new COM-port.

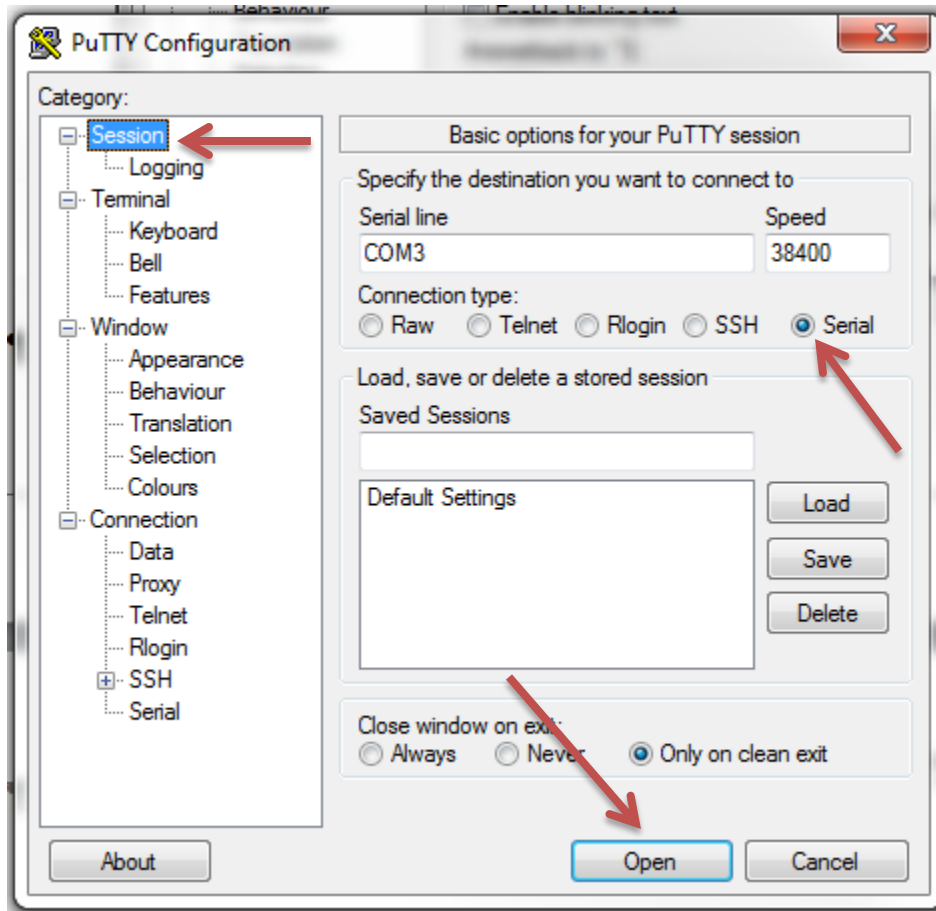


## Connect via terminal

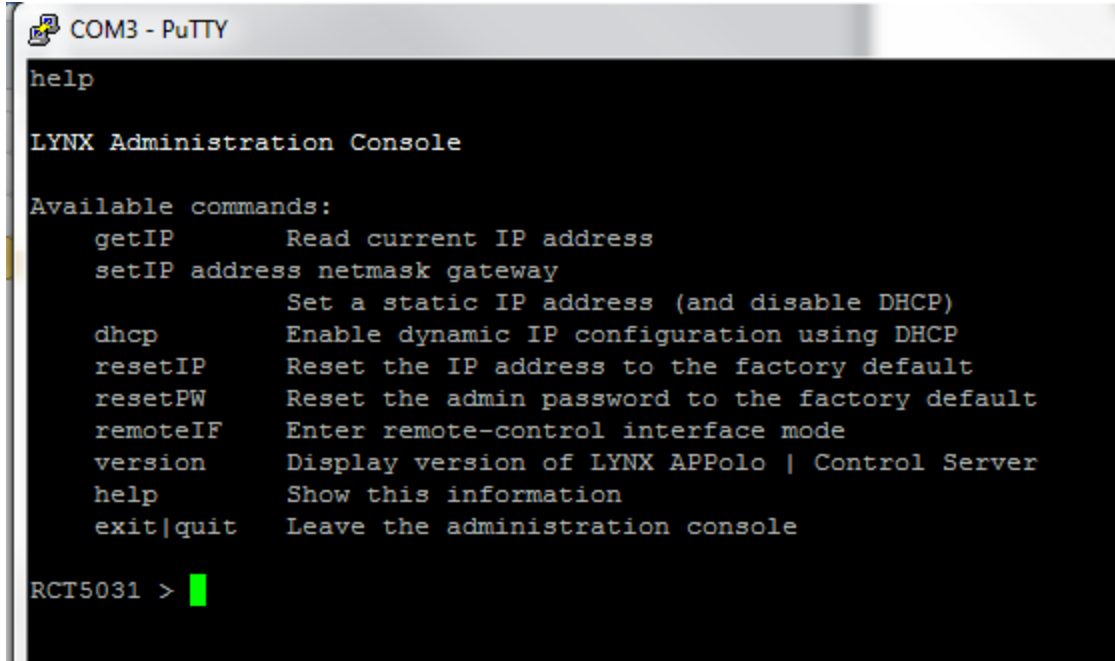
1. Start a terminal program like putty ([www.putty.org](http://www.putty.org)) and setup a serial connection with the right COM-port and settings and for convenience a local echo, so you can see what you write.



2. Start the session by clicking “session”, choose “serial” and then click “open”



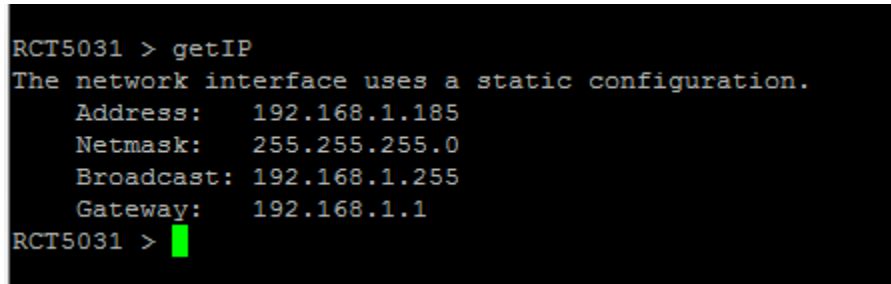
3. You will see a terminal window. Type “help” to get all commands.



```
COM3 - PuTTY
help
LYNX Administration Console
Available commands:
getIP      Read current IP address
setIP address netmask gateway
           Set a static IP address (and disable DHCP)
dhcp       Enable dynamic IP configuration using DHCP
resetIP    Reset the IP address to the factory default
resetPW    Reset the admin password to the factory default
remoteIF   Enter remote-control interface mode
version    Display version of LYNX APPolo | Control Server
help      Show this information
exit|quit  Leave the administration console

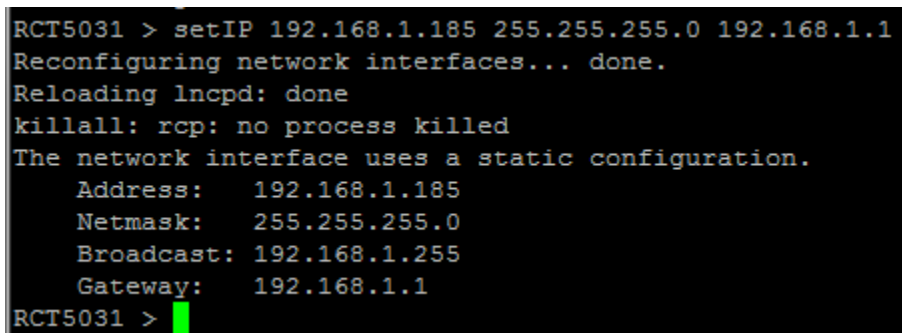
RCT5031 >
```

4. Enter “getIP” to see the actual set IP-address.



```
RCT5031 > getIP
The network interface uses a static configuration.
Address: 192.168.1.185
Netmask: 255.255.255.0
Broadcast: 192.168.1.255
Gateway: 192.168.1.1
RCT5031 >
```

5. For changing the IP-address you can enter “setIP <IP-address> <Netmask> <Gateway>”.



```
RCT5031 > setIP 192.168.1.185 255.255.255.0 192.168.1.1
Reconfiguring network interfaces... done.
Reloading lncpd: done
killall: rcp: no process killed
The network interface uses a static configuration.
Address: 192.168.1.185
Netmask: 255.255.255.0
Broadcast: 192.168.1.255
Gateway: 192.168.1.1
RCT5031 >
```

LYNX Technik AG hopes this application note helped to clarify the topic of changing RCTs' IP-address and you enjoy working with our products!