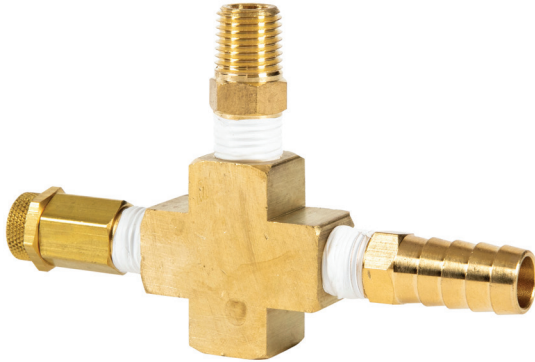


902

Introduce Vacuum Relief

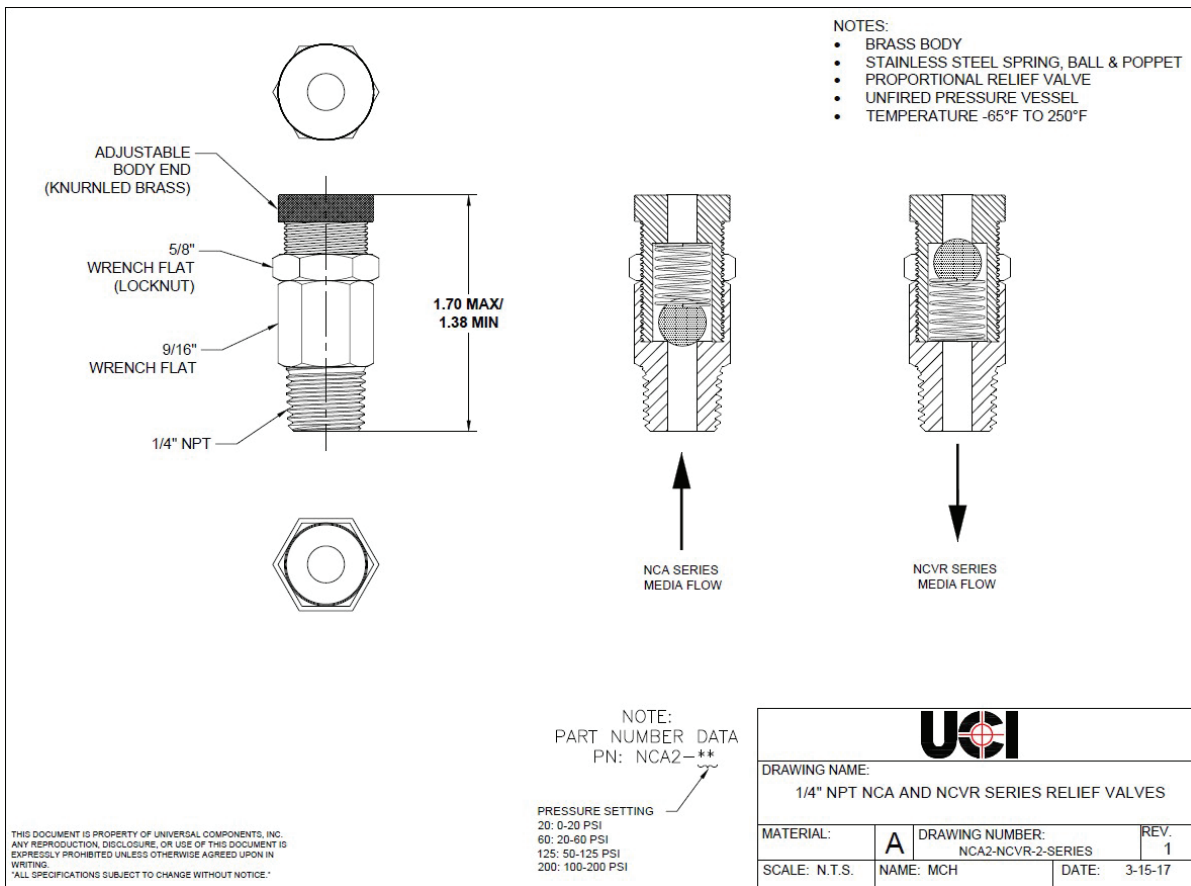


Introduce Vacuum Relief

This durable brass Bleedoff Valve Assembly gives you greater control of air pressure right at the source of vacuum.

- Screw male-threaded fitting directly into your pump.
- A Vacuum Gauge (#896-A) can be mounted into the threaded port on top for easy-to-see pressure reading.
- Bottom port is equipped with Bleedoff Valve, with adjustable screw for control of airflow.
- Attach 1/2" Vacuum Tubing (#893) to barbed fitting on fourth port for a leak-free air connection.

PLEASE NOTE: Vacuum Gauge and Vacuum Tubing are sold separately.



Information present herein has been compiled from sources considered to be dependable and is accurate and reliable to the best of our knowledge and belief but is not guaranteed to be so. Nothing herein is to be construed as recommending any practice or any product violation of any patent or in violation of any law or regulation. It is the user's responsibility to determine for himself the suitability of any material for a specific purpose and to adopt such safety precautions as may be necessary. We make no warranty as to the results to be obtained in using any material and, since conditions of use are not under our control, we must necessarily disclaim all liability with respect to the use of any material supplied by us.