



DATA SHEET

STEP KPL. LED extrusion – EX-KLS-1

Product characteristics

The stairs extrusion is made from high quality, double-anodized aluminum with the option of using LED diodes to illuminate the upper and lower half of the extrusion. For the upper lighting, use LEDs with the beam of light directed to the side also known as "side emitting" tape with widths up to 7 mm. For the lower lighting, use standard LED tape that is 8 - 10 mm. LEDs mounted in the lower part of the extrusion should be protected behind a cover: covers K, HS (frosted or clear) or LIGER (frosted matte) which are made of polycarbonate. The HS cover is certified for excellent resistance to all weather conditions and UV radiation, as well as being flame retardant. LEDs in the upper part of the extrusion can be covered with a special non-slip strip which is mounted in place where the extrusion is intended to be attached. The non-slip rope is included in the STEP extrusion set and is also available as a separate item. Installation of the rope in the extrusion is facilitated by a specially designed tool.

Additional accessories designed for the extrusion are polypropylene end caps. The application of end caps protects the extrusion against the ingress of dust or other undesirable particles that may cause soiling of the LED strip, degrading its lighting parameters. STEP-90 corner end cap is used to connect profiles at an angle of 90°. It provides safe and esthetic finishing of the profiles used to illuminate stairs with no sharp edges.

Fasten the extrusion to the surface using mounting screws and adhesive to ensure secure mounting to the surface. We can also increase the integrity of this lighting fixture to equal IP 67 standards.

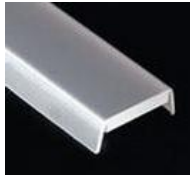
Applications

STEP extrusion with the LED light source is used to illuminate stairs and, in particular, as discreet lighting in cinemas, shops, nightclubs and restaurants. In the sealed version, it can also be used for illuminating stairs located in the outer architectural space.

Products related to the Extrusion



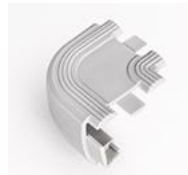
cover type K / KA-BIS
frosted (1547/17071)
clear (1548/17072)
cover type LIGER
frosted matte (17031)



cover type HS
frosted (1369)
clear (1370)



end cap
STEP-R, right (00303)
STEP-L, left (00304)



corner end cap
STEP-90 (24025)



tool for mounting
anti-slip rubber strip
(00023)



anti-slip rubber
strip (00297)

Technical specification

Ingress Protection Rating

IP 20 (standard), IP 67 (optional)

Available lengths

1 m / 2m (can be cut to any size)

Material

body – aluminum, cover – polycarbonate (PC), end cap – polypropylene (PP),
anti-slip rubber strip – polyurethane (PUR)

