



DATA SHEET

TRIADA LED extrusion – SKU: EX-KL2-3

Product characteristics

The three-channel extrusion is made from high quality, double-anodized aluminum and is designed for flexible or rigid LED strips that are

8 - 12 mm wide. One of the accessories offered for the extrusion are covers that shade and protect LEDs inside the profile. The available types of covers are: covers K12 (frosted or transparent) or HS12 (frosted or transparent).

Covers are made of polycarbonate and HS12 covers are certified for excellent resistance to all weather conditions and UV radiation, as well as being flame retardant. Standard polypropylene end caps are used for the extrusion as supplementary accessories. End caps protect the extrusion from dust and other undesirable elements, which can make LED strips dirty and consequently deteriorate the lighting parameters. The extrusion can be mounted to surfaces with the use of double-sided adhesive tape, mounting glue or screws which guarantee easy and secure mounting of the extrusion to a desired surface. Installation of the profile in drywall is performed using special TR springs. If you would like to mount a profile in an Armstrong drop ceiling with the use of TR springs, then we recommend special safety washers (42712).

This LED fixture can also be assembled to be waterproof and has its ingress protection rating (describes the protection against the ingress of solids, dust and water) equal to IP 67.

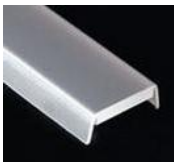
Applications

The extrusion with LED light source is mostly used as interior lighting, especially to light cabinets, glass-cases or as a decoration light for a niche in drywall ceilings. Due to the possibility of installing three strips inside the extrusion it can be used as a primary energy-efficient light source. The IP 67 version can be also used as an outdoor lighting for elevations or architectural elements.

Products related to the Extrusion



cover type K12
frosted (00155)
transparent (00156)



cover type HS12
frosted (00157)
transparent (00158)



end cap
without hole (00090)



spring TR (00801)

Technical specification

Ingress Protection Rating

IP 20 (standard), IP 67 (optional)

Available lengths

1 m / 2 m (can be cut to any size)

Material

body – aluminum, cover – polycarbonate (PC), end cap – polypropylene (PP),
spring – steel



**sample item from the mounting system of profiles

