



DATA SHEET

PAC-ALU LED extrusion – SKU: EX-KL2-1

Product characteristics

The angular extrusion is made from high quality, double-anodized aluminum, and designed for flexible or rigid LED strips that are 8 – 12.8 mm wide. One of the accessories offered for this extrusion are covers that shade and protect LEDs inside the profile. The types of covers offered are covers K12 (frosted or clear) or HS12 (frosted or clear). Covers are made of polycarbonate and the HS12 covers are certified for excellent resistance to all weather conditions and UV radiation, as well as being flame retardant. Standard polypropylene end caps are used for the extrusion as supplementary accessories. End caps protect the extrusion from dust and other undesirable elements, which can make LED strips dirty and consequently deteriorate the lighting parameters. The extrusion can be mounted to surfaces with the use of mounting glue or screws which guarantee easy and secure mounting of the extrusion to a desired surface. The LED fixture can also be assembled to be waterproof and has its ingress protection rating (describes the protection against the ingress of solids, dust and water) equal to IP 67.

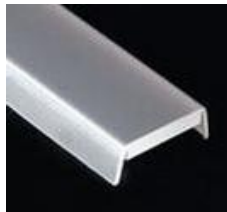
Applications

The extrusion with LED light source is mostly used for interior lighting, especially to light cabinets, glass-cases, or as a decoration light for a niche in drywall ceilings. The IP 67 version can also be used as outdoor lighting for elevations or architectural elements of gardens.

Products related to the Extrusion



cover type K12
frosted (00155)
clear (00156)



cover type HS12
frosted (00157)
clear (00158)



end cap
without hole (00084)

Technical specification

| | |
|---------------------------|---|
| Ingress Protection Rating | IP 20 (standard), IP 67 (optional) |
| Available lengths | 1 m / 2 m (can be cut to any size) |
| Material | body – aluminum, cover – polycarbonate (PC), end cap – polypropylene (PP) |

