

> em4

Accessories

Temperature converters

- > Compatible with em4 analog inputs
- > Can be used to diversify the type of sensors for analog inputs



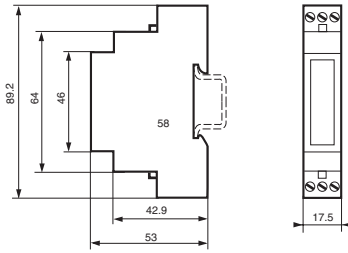
Temperature converter

Specific characteristics				
Designation	Input	Input range	Output	Code
Temperature converter	Pt1000 3-wire	-20 → +150 °C	0-10 V	88 950 150
Temperature converter	Pt100 3-wire	-40 → +40 °C	0-10 V	88 950 151
Temperature converter	Pt100 3-wire	0 → +100 °C	0-10 V	88 950 152
Temperature converter	Pt100 3-wire	0 → +250 °C	0-10 V	88 950 153
Temperature converter	Thermocouple J	0 → +300 °C	0-10 V	88 950 154
Temperature converter	Thermocouple K	0 → +600 °C	0-10 V	88 950 155

General characteristics	
Ambient characteristics	
Ambient characteristics	CE, UL
Protection rating	In accordance with IEC/EN 60529: IP40 on front panel IP20 on terminal block
Operating temperature	-10 → +55 °C
Electrical characteristics	
Supply	24 V ---
Operating limits	± 10 % or 21.6 → 26.4 V ---
Max. Output power	< 1 W
Output voltage	0 → 10 V ---
Device accuracy (full scale)	± 1 %

Diagrams

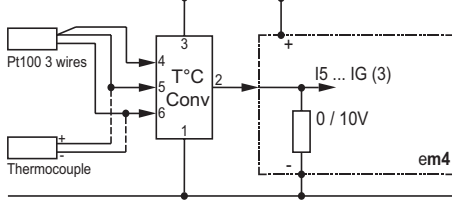
Dimensions (mm)



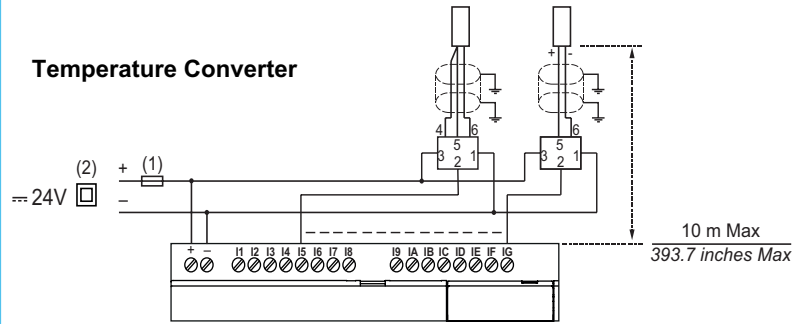
Connections

I5 ... IG U

+ 24 VDC -15% / +20%



Temperature Converter



- (1) 1 A (UL248) quick-blowing fuse, circuit-breaker or circuit protector (US)
- (2) Isolating source
- (3) Configured input "0-10V"