

# > em4

## Accessories

### NTC probes

- > Direct connection with no converter on analog input
- > Easy-to-use and low-cost temperature control solution
- > Fields of application: HVAC, compressors, geo-thermal systems, swimming pools, fountains
- > Analog input configured as a potentiometer via the NTC functions in the em4 soft



NTC PVC probe



NTC probe



NTC stainless probe



POM probe



Silicone probe

Specific characteristics			
Description	Ohmic value	Measurement range	Code
NTC2 PVC probe for em4 (24 V $\overline{-}$ , $\pm 10\%$ )	10 k $\Omega$ @ 25 °C	-25 $\rightarrow$ +85 °C	89 750 174
NTC1 probe (batch of 10) for em4 (24 V $\overline{-}$ , $\pm 10\%$ )	10 k $\Omega$ @ 25 °C	-25 $\rightarrow$ +85 °C	89 750 180
NTC2 Stainless 305 probe for em4 (24 V $\overline{-}$ , $\pm 10\%$ )	10 k $\Omega$ @ 25 °C	-35 $\rightarrow$ +120 °C	89 750 182
NTC2 POM probe (MOQ 25 pcs) for em4 (24 V $\overline{-}$ , $\pm 10\%$ )	10 k $\Omega$ @ 25 °C	-20 $\rightarrow$ +105 °C	89 750 185
NTC3 Silicone probe for em4 (24 V $\overline{-}$ , $\pm 10\%$ )	100 k $\Omega$ @ 25 °C	0 $\rightarrow$ +180 °C	89 750 186

Accessories			
Description	Operating temperature	Operating pressure	Code
316 stainless steel protective sleeve	-20 $\rightarrow$ +400 °C	16 bar	89 750 147

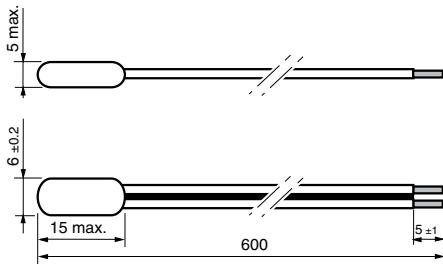
General characteristics	89 750 174	89 750 180	89 750 182	89 750 185	89 750 186
-------------------------	------------	------------	------------	------------	------------

Characteristics	89 750 174	89 750 180	89 750 182	89 750 185	89 750 186
<b>Material</b>	PVC	AS	Stainless	POM (polyoxymethylene)	Silicone
<b>Cable</b>	PVC	2 wires	Silicone (180 °C max.)	PVC (105 °C max.)	Silicone (200 °C max.)
<b>Cable length</b>	3000 mm	600 mm	3000 mm	3000 mm	800 mm
<b>Protection rating</b>	IP67	IP67	IP64	IP67	IP64
<b>Isolation class</b>	-	-	1	2	1
<b>Dielectric strength according to IEC 335</b>	-	1000 V $\sim$ / 1 mn	1250 V $\sim$ / 1 mn	-	2000 V $\sim$ / 1mn
<b>Dimensions</b>	Flank lead 1/2 Length 68 mm	5 x 6 mm Length 15 mm	$\varnothing$ 4.8 mm Length 30 mm	$\varnothing$ 6 mm Length 38 mm	$\varnothing$ 5 mm Length 17 mm
<b>Analog inputs are configured as a potentiometer in the em4 soft programming software via the function:</b>	NTC2	NTC1	NTC2	NTC2	NTC3

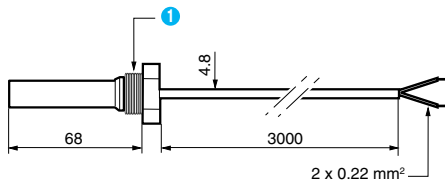
Diagrams

Dimensions (mm)

89 750 180

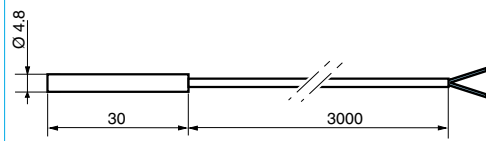


89 750 174

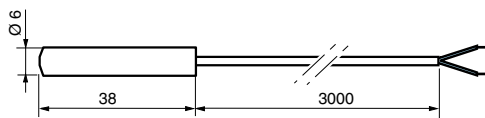


1/2 inch thread

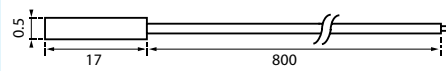
89 750 182



89 750 185

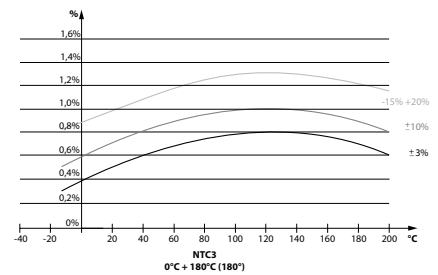
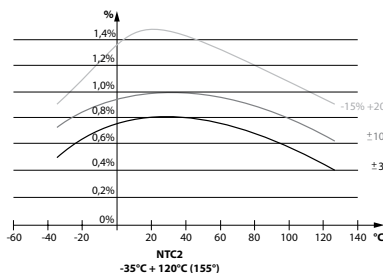
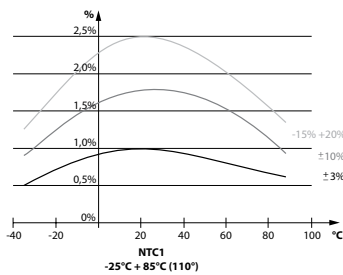


89 750 186



Curves

Accuracy

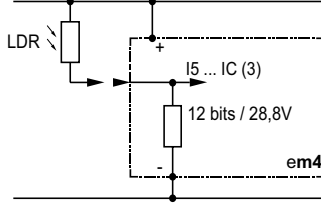


Accuracy: the more stable the supply is, the better the accuracy

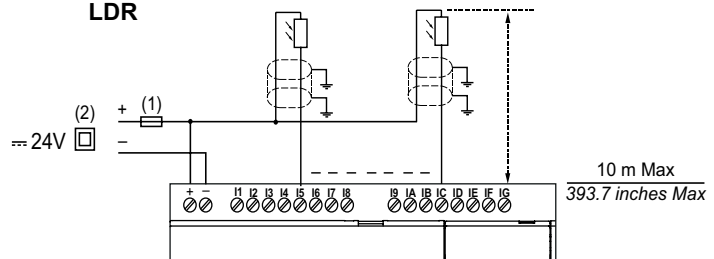
Connections

I5 ... IC U

+ 24 VDC -15% / +20%



LDR



- (1) 1 A (UL248) quick-blowing fuse, circuit-breaker or circuit protector (US)
- (2) Isolating source
- (3) Configured input "potentiometer"