



2025

MURANO®



<sup>1</sup>Feature availability varies by vehicle model year, model, trim level, packaging and options. <sup>2</sup>See [NissanUSA.com/connect/legal](https://www.nissanusa.com/connect/legal) for more NissanConnect features/services information. <sup>3</sup>ProPILOT Assist and ProPILOT Assist 1.1 cannot prevent collisions. It is the driver's responsibility to be in control of the vehicle at all times. Always monitor traffic conditions and keep both hands on the steering wheel. System operates only when lane markings are detected. Does not function in all weather, traffic and road conditions. System has limited control capability and the driver may need to steer, brake or accelerate at any time to maintain safety. See Owner's Manual for safety information. <sup>4</sup>Intelligent All-Wheel Drive cannot prevent collisions or provide enhanced traction in all conditions. Always monitor traffic and weather conditions. <sup>5</sup>Extra cost option. <sup>6</sup>Zero Gravity seats for front and rear outboard passengers only. <sup>7</sup>Information displayed is dependent on how vehicle is equipped. Do not use for extended periods of time. See Owner's Manual for important safety information. <sup>8</sup>Information displayed is dependent on how vehicle is equipped. Driving is serious business and requires your full attention. If you have to use the feature while driving, exercise extreme caution at all times so full attention may be given to vehicle operation. <sup>9</sup>Feature availability varies by vehicle model year, model, trim level, packaging and options. **Consumer activation of NissanConnect® Services SELECT package ("Package") required.** Package trial period included with eligible new vehicle purchase or lease. Trial period may be subject to change or termination at any time and without notice. After trial period ends, monthly subscription fee required. Driving is serious business and requires your full attention. Only use features when safe and legal to do so. Never program while driving. GPS mapping may not be detailed in all areas or reflect current road status. Connectivity service required. App subscriptions may be required. Data rates may apply. Subject to third party service availability. Should such service providers terminate or restrict service or features, service or features may be suspended or terminated without notice or with no liability to Nissan or its partners or agents. Google, Google Play and Google Maps are trademarks of Google LLC. For more information, see [NissanUSA.com/connect/legal](https://www.nissanusa.com/connect/legal). <sup>10</sup>Never program while driving. GPS mapping may not be detailed in all areas or reflect current road status. <sup>11</sup>Traffic Sign Recognition may not detect and read all traffic signs in all conditions. Driver should monitor all traffic signs and obey all traffic laws. See Owner's Manual for details. <sup>12</sup>HD Enhanced Intelligent Around View® Monitor cannot eliminate blind spots and may not detect every object. Driver should always turn and check surroundings before driving. See Owner's Manual for safety information. <sup>13</sup>Invisible Hood View cannot eliminate blind spots and does not warn of moving objects. Driver should always check surroundings before driving. See Owner's Manual for safety information. <sup>14</sup>Virtual composite 360° view. <sup>15</sup>Intelligent Forward Collision Warning cannot prevent collisions. See Owner's Manual for safety information. <sup>16</sup>Automatic Emergency Braking with Pedestrian Detection cannot prevent all collisions and may not provide warning or braking in all conditions. Driver should monitor traffic conditions and brake as needed to prevent collisions. See Owner's Manual for safety information. <sup>17</sup>Lane Departure Warning and Intelligent Lane Intervention only operate when lane markings or road edge (if equipped) are detectable. See Owner's Manual for safety information. <sup>18</sup>Blind Spot Warning and Intelligent Blind Spot Intervention® cannot prevent all collisions and may not detect every object or warn in all situations. Driver should always turn and look before changing lanes. See Owner's Manual for safety information. <sup>19</sup>Rear Cross Traffic Alert may not detect all vehicles. See Owner's Manual for safety information. <sup>20</sup>Rear Automatic Braking cannot prevent all collisions and may not provide warning or braking in all conditions. Driver should always turn and check surroundings before driving and brake as needed to prevent collisions. See Owner's Manual for safety information. <sup>21</sup>Sonar System may not detect every object. Driver should always check surroundings before driving. See Owner's Manual for safety information. <sup>22</sup>RearView Monitor may not detect every object and does not eliminate blind spots or warn of moving objects. See Owner's Manual for safety information. <sup>23</sup>Intelligent Driver Alertness cannot provide a warning in every situation. See Owner's Manual for safety information. <sup>24</sup>Remote Engine Start System to be used only in accordance with laws or rules in effect in your vehicle's location. <sup>25</sup>Rear Door Alert System does not detect people or cargo. Always check rear seat before exiting. See Owner's Manual for safety information. <sup>26</sup>Driving is serious business and requires your full attention. Do not operate any devices connected to the power outlets while driving. <sup>27</sup>Driving is serious business and requires your full attention. If you have to use the connected device while driving, exercise extreme caution at all times so full attention may be given to vehicle operation. External device not included. <sup>28</sup>**myQ SMART GARAGE CONTROL HUB OFFER:** In-vehicle myQ Garage app connection and connectivity services required. myQ Connected Garage Control ("myQ Product(s)") are owned and operated by Chamberlain Group LLC ("CG"), use of myQ Products are subject to myQ Terms of Service (<https://www.myq.com/terms-of-use>), and are not within Nissan's control. Nissan does not warrant and is not responsible for consequential, incidental, or other damages caused by any myQ Product defects and incompatibility of any myQ Product with customer's garage door opener. Data rates may apply. Subject to availability of myQ Products. Contact CG for myQ Products information, including compatibility and warranty. <sup>29</sup>Available only on Nissan vehicles with AT&T-compatible in-vehicle Wi-Fi hotspot capability. **Subject to third party service availability. Trial activation required. Trial ends when all data is used or period ends, whichever comes first. Use features only when safe and legal. Data charges may apply. Subject to AT&T terms and conditions and its privacy policy, and are not within Nissan's control. Visit [www.att.com/csa](http://www.att.com/csa) for complete terms and conditions.** Trial subscription is subject to change or early termination at any time without notice. Trademarks and trade names are those of their respective owners. <sup>30</sup>Feature availability varies by vehicle model year, model, trim level, packaging and options. Connectivity service may be required. Alexa is Amazon's cloud-based voice service. Subject to third party service availability. Amazon, Alexa, Echo, and all related marks are trademarks of **Amazon.com**, Inc. or its affiliates. For more information see [NissanUSA.com/connect/legal](https://www.nissanusa.com/connect/legal). <sup>31</sup>**Nissan vehicle with "SiriusXM with 360L" capability:** SiriusXM with 360L trial period is included with the purchase or lease of a new Nissan vehicle if: (i) vehicle is equipped with SiriusXM with 360L capability and (ii) vehicle is purchased or leased from new Nissan dealer stock. Trial period begins on the purchase or lease date of the qualifying new Nissan vehicle. SiriusXM with 360L is owned and operated by SiriusXM, use of SiriusXM account and its services and features are subject to the SiriusXM Customer Agreement and Privacy Policy available at [siriusxm.com](http://siriusxm.com), and are not within Nissan's control. Should SiriusXM terminate, change, or restrict service or features, service or features may be suspended or terminated without notice or with no liability to Nissan or its partners or agents. Nissan and its partners or agents are also not responsible for associated costs or other third party changes that may be required for continued operation due to cellular network unavailability, restriction, or termination (including equipment replacements/upgrades, if available, or roaming charges on alternative networks). Trial period is subject to change or early termination at any time without notice. SiriusXM and related logos are trademarks of Sirius XM Radio Inc. and its respective subsidiaries. **SiriusXM and SiriusXM with 360L Trial Subscription:** Service will automatically stop at the end of your trial subscription period unless you decide to continue service. Trial is non-transferable. If you do not wish to enjoy your trial, you can cancel by calling the number below. All SiriusXM services require a subscription, each sold separately by SiriusXM after the trial period. **Service subject to the SiriusXM Customer Agreement and Privacy Policy, visit [siriusxm.com](http://siriusxm.com) for complete terms and how to cancel which includes online methods or calling 1-866-635-2349.** Some services and features are subject to device capabilities and location availability. Satellite service not available in AK & HI. Certain features and/or content may not be available in vehicles with SiriusXM with 360L unless an active data connection is enabled in the vehicle. Content varies by SiriusXM subscription package. All fees, content and features are subject to change. <sup>32</sup>For complete information concerning warranty coverage, conditions, limitations, and exclusions, see your Nissan dealer, [parts.NissanUSA.com](https://www.nissanusa.com) and read your vehicle's Warranty Information Booklet. <sup>33</sup>Accessories shown on vehicle are not genuine Nissan parts/accessories. Not warranted by Nissan. Refer to product manufacturer for warranty details. Nissan limited warranty does not cover damages or failures to the vehicle caused by improper installation or alterations of any accessory or component. Contact your dealer for details. <sup>34</sup>Towing capacity varies by configuration. See Nissan Towing Guide and Owner's Manual for additional information. Always secure cargo. <sup>35</sup>Cargo shown for display purposes only. Cargo and load capacity limited by weight and distribution. Always secure cargo. Heavy loading of the vehicle with cargo, especially on the roof, will affect the handling and stability of the vehicle. <sup>36</sup>Only front kick plates illuminate. <sup>37</sup>Brake Assist cannot prevent all collisions and may not provide warning or braking in all conditions. Driver should monitor traffic conditions and brake as needed to prevent collisions. See Owner's Manual for safety information. <sup>38</sup>Vehicle Dynamic Control cannot prevent collisions due to abrupt steering, carelessness, or dangerous driving techniques. It should remain on when driving, except when freeing the vehicle from mud or snow. See Owner's Manual for safety information. <sup>39</sup>Air bags are only a supplemental restraint system. Always wear your seat belt. Rear-facing child restraints should not be placed in the front-passenger's seat. All children 12 and under should ride in the rear seat properly secured in child restraints, booster seats, or seat belts according to their size. Air bags will only inflate in certain accidents. See Owner's Manual for safety information. <sup>40</sup>Tire Pressure Monitoring System is not a substitute for regular tire pressure checks. See Owner's Manual for safety information. <sup>41</sup>Vehicle must be on for the Easy-Fill Tire Alert to operate. <sup>42</sup>Up to 1,500 lbs towing for 2025 Murano. Towing capacity varies by configuration. See Nissan Towing Guide and Owner's Manual for additional information. Cargo and load capacity limited by weight and distribution. Always secure cargo. <sup>43</sup>2025 EPA Fuel Economy Estimates. 21 City MPG / 27 Highway MPG / 23 Combined MPG for Murano®. Actual mileage may vary with driving conditions. Use for comparison only. <sup>44</sup>Roadside assistance coverage period varies by model year and model. Includes Trip Interruption benefits. For complete information concerning warranty coverage, conditions and exclusions, see your Nissan dealer and read your vehicle's Warranty Information Booklet. <sup>45</sup>Tow Hitch Receiver Kit not available at time of 2025 Murano market release date. Expected availability Spring 2025. Amazon, Alexa, Echo, and all related marks are trademarks of **Amazon.com**, Inc. or its affiliates. Apple CarPlay® is a registered trademark of Apple, Inc. Bluetooth® word mark and logos are owned by Bluetooth SIG, Inc., and any use of such marks by Nissan is under license. Bose® is a registered trademark of The Bose Corporation. Google, Android Auto, Google Maps, YouTube Music, and other marks are trademarks of Google LLC. Google Assistant and some related features are not available in all languages or countries. See [g.co/assistant/carlanguages](https://www.google.com/assistant/carlanguages) for updates to language and country availability. Compatible Android phone and compatible active data plan required. Wireless use of Android Auto requires a compatible Android 11.0+ phone and compatible active data plan. Check [g.co/androidauto/requirements](https://www.google.com/androidauto/requirements) for compatibility. HomeLink® is a registered trademark of Gentex Corporation. myQ® is a registered trademark of The Chamberlain Group, Inc. SiriusXM is a registered trademark of Sirius XM Radio Inc. Yakima® is a registered trademark of Yakima Products, Inc. This brochure is intended for general descriptive and informational purposes only. It is subject to change and does not constitute an offer, representation or warranty (express or implied) by Nissan North America, Inc. Interested parties should confirm the accuracy of any information in this brochure as it relates to a vehicle directly with Nissan North America, Inc., before relying on it to make a purchase decision. Nissan North America, Inc. reserves the right to make changes, at any time, without prior notice, in prices, colors, materials, equipment, specifications, and models and to discontinue models or equipment. Due to continuous product development and other pre- and post-production factors, actual vehicle, materials and specifications may vary from this brochure. Some vehicles shown with optional equipment. See the actual vehicle for complete accuracy. Availability and delivery times for particular models or equipment may vary. Specifications, options and accessories may differ in Hawaii, U.S. territories and other countries. For additional information on availability, options or accessories, see your Nissan dealer or contact Nissan North America, Inc. At [NissanUSA.com](https://www.nissanusa.com), you'll find virtual product demonstrations, a way to "build your own Nissan," a dealer locator, and more information about key Nissan support services. Or if you'd prefer, call **1-800-NISSAN-3** for answers to specific questions about Murano® or any other Nissan vehicle. The Nissan names, logos, product names, feature names, and slogans are trademarks owned by or licensed to Nissan Motor Co. Ltd. and/or its North American subsidiaries. Other trademarks and trade names are those of their respective owners. **Always wear your seat belt, and please drive responsibly.** ©2024 Nissan North America, Inc. All rights reserved. <sup>25</sup>Murano.®

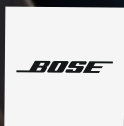


# Your bold new chapter

Welcome to the new era of you. Starting with a new turbocharged engine, supple, leather-trimmed massaging front seats,<sup>1</sup> a sleek digital display,<sup>1,2</sup> and gorgeous new looks, the all-new 2025 Murano<sup>®</sup> becomes a very personal vision of driving comfort. And with ProPILOT Assist<sup>3</sup> and Intelligent All-Wheel Drive,<sup>1,4</sup> Murano serves up a new sense of confidence on your drive. So get inside, sit back, and let Murano boldly lead you into a new world of excitement, adventure, and confidence.

## Journey beyond, relax within

Step into your moment. Murano leaves a lasting impression with a boldly stylish design that makes the ordinary become extraordinary. Sit back and savor massaging front seats,<sup>1</sup> and set the mood to your liking with 64 color choices of ambient lighting.<sup>1</sup> And with the panoramic moonroof,<sup>1</sup> wherever your drive takes you, you have the sun, the moon, the stars, and a soft breeze.



**You heard it here first** Bose, a leader in high-fidelity sound systems, designed an available highly customized listening experience for Murano. Based on proprietary design and the acoustical analysis of the cabin, Bose brings the power of sound to every seat.<sup>1</sup>

Available  
Massaging Front Seats

Available  
Ambient Lighting

Zero Gravity  
Seats<sup>6</sup>

Nissan Murano® Platinum AWD shown in Twilight Blue Semi-aniline leather appointments.



### Instant connection

With up to three customizable displays, connecting has never felt more personal. A 12.3" digital dashboard and 12.3" touch-screen display create a seamless display of information.<sup>2, 7, 8</sup> And with available Google built-in, Google Assistant and Google Maps help you find nearby restaurants and stores — no phone required.<sup>2, 9, 10</sup>



Nissan Murano® Platinum AWD shown in Ivory Caramel Semi-aniline leather appointments.<sup>1, 2, 7, 8</sup>



### Murano® sees more than you can imagine

Stay in control and confident on your journey with the available HD Enhanced Intelligent Around View® Monitor and the new Invisible Hood View.<sup>1, 12, 13</sup> See what's around your Murano in a whole new way with the option of split screens of the front, rear, and curbside views to help you smoothly maneuver into any parking space.

Nissan Murano® Platinum AWD shown in Two-tone Everest White TriCoat / Super Black.<sup>5</sup>



**HD Enhanced Intelligent Around View® Monitor** Looking to make a cleaner entrance into a parking spot or better fit into your home garage? Murano has a four-camera system that gives you a virtual composite 360° bird's-eye view of your vehicle to help make these tasks quick and easy.<sup>1, 12, 14</sup>



### Forward-thinking tech

Murano's available Head-Up Display allows you to keep what's important right in your line of sight by projecting information like your current speed and the speed limit right in front of you.<sup>1, 7, 11</sup>



**Invisible Hood View** See what's ahead of you in a whole new way. Murano gives you a view through your front wheels and hood for even more precision and confidence when you need it most.<sup>1, 13</sup>

## CHOOSE YOUR COLOR



Everest White TriCoat<sup>5</sup>



Brilliant Silver Metallic

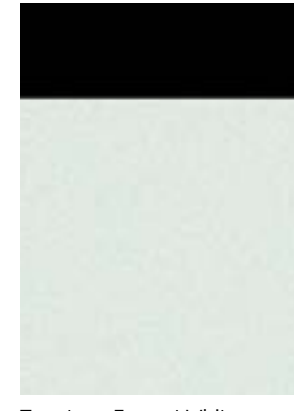


Gun Metallic

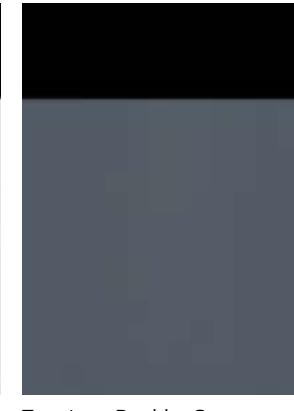


Champagne Silver Metallic<sup>5</sup>

	SV	SL	PLT
Graphite Leatherette	<input type="checkbox"/>	<input type="checkbox"/>	
Gray Leatherette	<input type="checkbox"/>	<input type="checkbox"/>	
Twilight Blue Semi-aniline Leather appointments			<input type="checkbox"/>
Graphite Mahogany Semi-aniline Leather appointments			<input type="checkbox"/>
Ivory Caramel Semi-aniline Leather appointments			<input type="checkbox"/>



Two-tone Everest White TriCoat / Super Black<sup>5</sup>



Two-tone Boulder Gray Pearl / Super Black<sup>5</sup>



Two-tone Scarlet Ember Tintcoat / Super Black<sup>5</sup>



Two-tone Aurora Blue Metallic / Super Black<sup>5</sup>



Two-tone Deep Ocean Blue Pearl / Super Black<sup>5</sup>

	SV	SL	PLT
Graphite Leatherette	<input type="checkbox"/>	<input type="checkbox"/>	
Gray Leatherette	<input type="checkbox"/>	<input type="checkbox"/>	
Twilight Blue Semi-aniline Leather appointments			<input type="checkbox"/>
Graphite Mahogany Semi-aniline Leather appointments			<input type="checkbox"/>
Ivory Caramel Semi-aniline Leather appointments			<input type="checkbox"/>

Standard

Nissan has taken care to ensure that the digital color swatches presented here are the closest possible representation of actual vehicle colors. Swatches may vary slightly due to viewing light or screen quality. Please see the actual vehicle and colors at your dealer.



Scarlet Ember Tintcoat<sup>5</sup>



Aurora Blue Metallic<sup>5</sup>



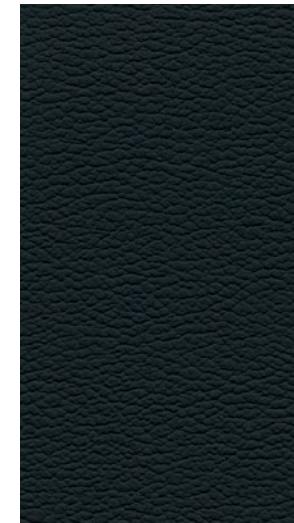
Deep Ocean Blue Pearl



Super Black

	SV	SL	PLT
Graphite Leatherette	<input type="checkbox"/>	<input type="checkbox"/>	
Gray Leatherette	<input type="checkbox"/>	<input type="checkbox"/>	
Twilight Blue Semi-aniline Leather appointments			<input type="checkbox"/>
Graphite Mahogany Semi-aniline Leather appointments			<input type="checkbox"/>
Ivory Caramel Semi-aniline Leather appointments			<input type="checkbox"/>

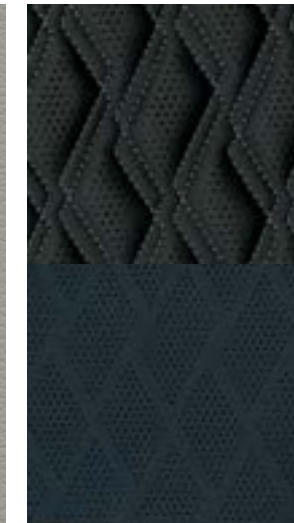
## CHOOSE YOUR INTERIOR



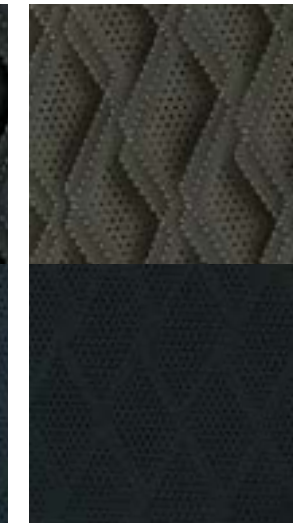
Graphite Leatherette SV|SL



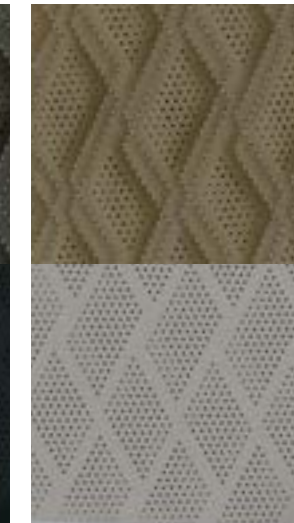
Gray Leatherette SV|SL



Twilight Blue Semi-aniline Leather appointments Platinum



Graphite Mahogany Semi-aniline Leather appointments Platinum



Ivory Caramel Semi-aniline Leather appointments Platinum

## CHOOSE YOUR TRIM LEVEL

### SV

- 241-hp, 2.0-liter VC-Turbo® engine
- Available Intelligent All-Wheel Drive (AWD)<sup>4</sup>
- 9-speed automatic transmission
- Paddle shifters
- Drive Mode Selector with three modes
- Electronic parking brake
- ProPILOT Assist<sup>3</sup>
- Intelligent Forward Collision Warning<sup>15</sup>
- Automatic Emergency Braking with Pedestrian Detection<sup>16</sup>
- Lane Departure Warning<sup>17</sup>
- Intelligent Lane Intervention<sup>17</sup>
- Blind Spot Warning<sup>18</sup>
- Intelligent Blind Spot Intervention<sup>18</sup>
- Rear Cross Traffic Alert<sup>19</sup>
- Rear Automatic Braking<sup>20</sup>
- Front and Rear Sonar System<sup>21</sup>
- RearView Monitor<sup>22</sup>
- Hill start assist
- Automatic brake hold
- High Beam Assist
- Traffic Sign Recognition<sup>11</sup>
- Intelligent Driver Alertness<sup>23</sup>
- 20" Gloss black aluminum-alloy wheels with gloss black aero covers
- Intelligent Auto Headlights
- LED headlights with LED signature Daytime Running Lights
- LED taillights
- UV-reducing side solar glass
- Rear privacy glass
- Power heated outside mirrors
- Power liftgate
- Dual Zone Automatic Temperature Control
- Rear passenger air conditioning vents
- Nissan Intelligent Key® with Push Button Ignition
- Remote Engine Start System with Intelligent Climate Control<sup>24</sup>
- Approach Unlock/Walk Away Lock
- Power windows with one-touch auto-up/down
- Power door locks with auto-locking feature
- Rear Door Alert<sup>25</sup>
- Sun visors with illuminated vanity mirrors and extensions
- Cargo area 12-volt DC power outlet<sup>26</sup>
- Six cargo tie-down hooks
- 10-way power driver's seat, including 2-way power lumbar support
- 6-way power passenger's seat
- Heated front seats
- 60/40-split fold-down rear seatbacks
- Rear center armrest
- Leatherette seats
- TailorFit®-wrapped steering wheel
- 12.3" Digital dashboard with fully digital gauges<sup>8</sup>
- NissanConnect® 12.3" touch-screen display<sup>2</sup>
- Wireless Apple CarPlay® integration<sup>2</sup>
- Wireless Android Auto™ compatibility<sup>2</sup>
- Streaming Audio via Bluetooth®<sup>2</sup>
- SiriusXM® with 3-month subscription included<sup>2</sup>
- Active Noise Cancellation
- Active Sound Enhancement
- Four USB-C ports<sup>27</sup>
- Wireless charger<sup>27</sup>



### SL INCLUDES SV EQUIPMENT PLUS:

- Intelligent All-Wheel Drive (AWD)<sup>4</sup>
- ProPILOT Assist 1.1<sup>3</sup>
- HD Enhanced Intelligent Around View® Monitor<sup>12</sup>
- 20" Gloss black aluminum-alloy wheels with Gun Metallic aero covers
- Panoramic moonroof
- Acoustic front side glass
- Power tilting, heated outside mirrors with integrated turn signals
- Gun Metallic rear diffuser
- Connected garage door opener with myQ®<sup>28</sup>
- Auto-dimming rearview mirror
- Customizable multi-color ambient lighting
- Driver's seat and outside mirrors position memory
- Heated steering wheel
- Matte chrome interior accents
- Murano glass-inspired interior trim
- NissanConnect® Services powered by SiriusXM® with trial access to 5-year Select and 3-year Premium packages<sup>2</sup>
- In-vehicle data and Wi-Fi with 3-month or 3GB trial subscription<sup>2, 29</sup>
- Google built-in<sup>2, 9</sup>
- Enhanced Voice Recognition<sup>10</sup>
- Alexa Built-in<sup>2, 30</sup>
- Hybrid Radio<sup>2, 29</sup>
- SiriusXM® with 360L with 3-month subscription included<sup>31</sup>
- Bose Premium Audio System with 10 speakers



### PLATINUM INCLUDES SL EQUIPMENT PLUS:

- 21" Machine-finished aluminum-alloy wheels with Gun Metallic aero covers
- Power tilting and folding heated outside mirrors with integrated turn signals
- Gloss black bumper accents and side moldings
- Motion Activated Liftgate
- Power tilt and telescoping steering column
- Rain-sensing windshield wipers
- HomeLink® Universal Transceiver
- Rear door sunshades
- 12-way power driver's seat, including 4-way power lumbar support
- 10-way power passenger's seat, including 4-way power lumbar support
- Climate-controlled front seats (heated and ventilated)
- Heated rear outboard seats
- Massaging front seats
- Steering-wheel position memory
- Quilted semi-aniline leather-appointed seats
- Head-Up Display<sup>7</sup>



NISSAN MURANO® ACCESSORIES

# Turn brand-new into all you

Every Genuine Nissan Accessory is custom-fit, custom-designed, and durability-tested. Each one is backed by Nissan's 3-year/36,000-mile (whichever occurs first) limited warranty (if installed by the dealer at the time of new vehicle purchase) and can be financed when installed by the dealer at time of new vehicle purchase.<sup>32</sup> Affiliated Yakima® accessories are not warranted by Nissan. Refer to product manufacturer for warranty details. Nissan Limited Warranty does not cover damages or failures to the vehicle caused by improper installation or alterations of any Nissan-affiliated accessory or component. Contact your dealer/retailer for details.<sup>33</sup>



For more information and to shop online for Murano Genuine Nissan Accessories, scan the code.



Nissan Murano® SV AWD shown in Pearl White TriCoat with 20" Dark Charcoal Aluminum-Alloy Wheels, Splash Guards (4-piece set), Exterior Ground Lighting w/ Logo and Rear Illumination, Tow Hitch Receiver Kit, Class I,<sup>34, 45</sup> Affiliated: Yakima® RidgeBack 4 — Hitch Mount Bike Rack,<sup>33, 35</sup> Affiliated: Yakima® HitchSki — Hitch Mount Ski Adaptor,<sup>33, 35</sup>

- A. Panoramic Illuminated Headliner**  
Frame the panoramic moonroof and set the mood from above with these hidden, white LEDs.
- B. Soft Sided Cargo Cooler**  
A cooler with a cool factor — chills 38 cans for 30 hours. Clad in patterned material that's soft to touch.
- C. Pet Ramp and Dog Harness**  
Transport your furry friends securely and comfortably.
- D. Interior Door Scuff Protection**  
Armor your door and accent your style. Protect the most kicked and scratched part of your door with stylish scuff plates.
- E. All-Season Floor Mats — High Wall Liners (4-piece set)**  
No rain, sleet, or snow will muck up your Murano.
- F. Illuminated Cargo Scuff Plates**  
A bright idea that helps protect your liftgate from scuffs and scratches.
- G. Retractable Cargo Cover and Carpeted Cargo Area Protector**  
Keep it covered and keep it protected. (Items sold separately)
- H. Sport Pedals**  
Step up your style with added grip and a track-inspired look.

Additional Accessories:

- Carpeted Floor Mats (4-piece set)
- Removable Tote Cargo Organizer
- Cargo Net
- Hatch Tent
- Wheel Locks
- Black Rear Bumper Protector
- Interior Accent Lighting
- Illuminated Kick Plates<sup>36</sup>
- Frameless Auto-Dimming Rearview Mirror w/ HomeLink®
- All-Season Cargo Area Protector
- Affiliated: Yakima® RidgeBack 4 — Hitch Mount Bike Rack<sup>33, 35</sup>
- Affiliated: Yakima® RidgeBack 2 — Hitch Mount Bike Rack<sup>33, 35</sup>
- Affiliated: Yakima® HitchSki — Hitch Mount Ski Adapter<sup>33, 35</sup>
- And More



## SPECIFICATIONS

Engine	SV	SL	PLT
2.0-liter VC-Turbo® DOHC 16-valve 4-cylinder engine Horsepower — 241 hp @ 5,600 rpm Torque — 260 lb-ft @ 4,000 rpm	■	■	■
Idle stop/start	■	■	■

Drivetrain			
Front-Wheel Drive (FWD)	■		
Intelligent All-Wheel Drive (AWD) <sup>4</sup>	□	■	■
9-speed automatic transmission	■	■	■
Paddle shifters	■	■	■
Drive Mode Selector with three modes	■	■	■

Brakes			
Front and rear vented disc brakes	■	■	■
Anti-lock Braking System (ABS)	■	■	■
Electronic Brake force Distribution (EBD)	■	■	■
Brake Assist <sup>37</sup>	■	■	■
Electronic parking brake	■	■	■

Suspension/Steering			
Independent strut front suspension	■	■	■
Multi-link independent rear suspension	■	■	■
Front and rear stabilizer bars	■	■	■
Dual-pinion electric-powered steering	■	■	■

Driver Assistance Technologies			
ProPILOT Assist <sup>3</sup>	■		
ProPILOT Assist 1.1 <sup>3</sup>	■	■	■
Intelligent Forward Collision Warning <sup>15</sup>	■	■	■
Automatic Emergency Braking with Pedestrian Detection <sup>16</sup>	■	■	■
Lane Departure Warning <sup>17</sup>	■	■	■
Intelligent Lane Intervention <sup>17</sup>	■	■	■
Blind Spot Warning <sup>18</sup>	■	■	■
Intelligent Blind Spot Intervention <sup>*18</sup>	■	■	■
Rear Cross Traffic Alert <sup>19</sup>	■	■	■
Rear Automatic Braking <sup>20</sup>	■	■	■
Front and Rear Sonar System <sup>21</sup>	■	■	■
RearView Monitor <sup>22</sup>	■		
HD Enhanced Intelligent Around View® Monitor <sup>12</sup>	■	■	■
Vehicle Dynamic Control (VDC) with Traction Control System (TCS) <sup>38</sup>	■	■	■
Active Brake Limited Slip (ABLS)	■	■	■
Hill start assist	■	■	■
Automatic brake hold	■	■	■
High Beam Assist	■	■	■
Traffic Sign Recognition <sup>11</sup>	■	■	■
Intelligent Driver Alertness <sup>23</sup>	■	■	■

Wheels/Tires			
20" Gloss black aluminum-alloy wheels with gloss black aero covers	■		
20" Gloss black aluminum-alloy wheels with Gun Metallic aero covers		■	
21" Machine-finished aluminum-alloy wheels with Gun Metallic aero covers			■

Wheels/Tires (continued)	SV	SL	PLT
P255/55R20 All-season tires	■	■	
P255/50R21 All-season tires			■
Spare tire	□	□	□

Exterior Features			
Intelligent Auto Headlights	■	■	■
LED headlights with LED signature Daytime Running Lights	■	■	■
LED taillights	■	■	■
Panoramic moonroof		■	■
UV-reducing side solar glass	■	■	■
Acoustic front side glass		■	■
Rear privacy glass	■	■	■
Power heated outside mirrors	■		
Power tilting, heated outside mirrors with integrated turn signals		■	
Power tilting and folding heated outside mirrors with integrated turn signals			■
Gloss black bumper accents and side moldings			■
Gun Metallic rear diffuser		■	■
Power liftgate	■	■	■
Motion Activated Liftgate			■

Comfort/Convenience			
Dual Zone Automatic Temperature Control	■	■	■
Rear-passenger air conditioning vents	■	■	■
In-cabin microfilter	■	■	■
Nissan Intelligent Key® with Push Button Ignition	■	■	■
Remote Engine Start System with Intelligent Climate Control <sup>24</sup>	■	■	■
Approach Unlock/Walk Away Lock	■	■	■
Power windows with one-touch auto-up/down	■	■	■
Power door locks with auto-locking feature	■	■	■
Rear Door Alert <sup>25</sup>	■	■	■
Tilt and telescoping steering column	■	■	
Power tilt and telescoping steering column			■
Variable intermittent speed-sensitive windshield wipers	■	■	■
Rain-sensing windshield wipers			■
Intermittent rear window wiper	■	■	■
Connected garage door opener with myQ <sup>®28</sup>		■	■
HomeLink® Universal Transceiver			■
Auto-dimming rearview mirror		■	■
Sun visors with illuminated vanity mirrors and extensions	■	■	■
Rear door sunshades			■
Cargo area 12-volt DC power outlet <sup>26</sup>	■	■	■
Customizable multi-color ambient lighting		■	■

Seating/Appointments			
10-way power driver's seat, including 2-way power lumbar support	■	■	
12-way power driver's seat, including 4-way power lumbar support			■
6-way power passenger's seat	■	■	
10-way power passenger's seat, including 4-way power lumbar support			■

Seating/Appointments (continued)	SV	SL	PLT
Heated front seats	■	■	
Climate-controlled front seats (heated and ventilated)			■
Heated rear outboard seats			■
Massaging front seats			■
Driver's seat and outside mirrors position memory		■	■
Steering-wheel position memory			■
60/40-split fold-down rear seatbacks	■	■	■
Leatherette seats	■	■	
Quilted semi-aniline leather-appointed seats			■
Heated steering wheel		■	■
TailorFit®-wrapped steering wheel	■	■	■
Matte chrome interior accents		■	■
Black stripe interior trim	■		
Murano glass-inspired interior trim		■	■

Infotainment			
12.3" Digital dashboard with fully digital gauges <sup>9</sup>	■	■	■
Head-Up Display <sup>7</sup>			■
NissanConnect® 12.3" touch-screen display <sup>2</sup>	■	■	■
NissanConnect® Services powered by SiriusXM® with trial access to 5-year Select and 3-year Premium packages <sup>2</sup>		■	■
In-vehicle data and Wi-Fi with 3-month or 3GB trial subscription <sup>2, 29</sup>		■	■
Google built-in <sup>2, 9</sup>		■	■
Wireless Apple CarPlay® integration <sup>2</sup>	■	■	■
Wireless Android Auto™ compatibility <sup>2</sup>	■	■	■
Bluetooth® Hands-free Phone System <sup>2</sup>	■	■	■
Streaming Audio via Bluetooth® <sup>2</sup>	■	■	■
Voice Recognition <sup>10</sup>	■		
Enhanced Voice Recognition <sup>10</sup>		■	■
Alexa Built-in <sup>2, 30</sup>		■	■
Hybrid Radio <sup>2, 29</sup>		■	■
SiriusXM® with 3-month subscription included <sup>2</sup>	■		
SiriusXM® with 360L with 3-month subscription included <sup>31</sup>		■	■
AM/FM audio system with six speakers	■		
Bose Premium Audio System with 10 speakers		■	■
Active Noise Cancellation	■	■	■
Active Sound Enhancement	■	■	■
Four USB-C ports <sup>27</sup>	■	■	■
Wireless charger <sup>27</sup>	■	■	■

Safety/Security			
Nissan Advanced Air Bag System with dual-stage supplemental front air bags with seat-belt and occupant-classification sensors <sup>39</sup>	■	■	■
Seat-mounted side-impact supplemental air bags for front- and rear-seat outboard occupants <sup>39</sup>	■	■	■
Driver seat-mounted supplemental air bag <sup>39</sup>			■
Driver and front-passenger supplemental knee air bags <sup>39</sup>	■	■	■
Roof-mounted curtain supplemental air bags for side-impact and rollover head protection for front and rear-seat outboard occupants <sup>39</sup>	■	■	■
Tire Pressure Monitoring System (TPMS) with individual tire pressure display and Easy-Fill Tire Alert <sup>40, 41</sup>	■	■	■
Vehicle Security System	■	■	■

## DIMENSIONS/CAPACITIES/WEIGHTS/MPG

Exterior Dimensions — Inches			
Wheelbase			111.2
Overall length			192.9
Overall width			78.0
Overall height			67.9
Track width (front/rear)			66.7

Interior Dimensions (front/rear) — Inches			
	SV	SL	PLT
Head room	41.1/39.7	39.4/37.9	39.4/37.9
Leg room	44.3/36.3	44.3/36.3	44.3/36.3
Hip room	56.9/56.9	56.9/56.9	56.9/56.9
Shoulder room	60.8/58.5	60.8/58.5	60.8/58.5
Step-in height	19.5	19.5	19.5

Capacities			
	SV	SL	PLT
Seating capacity	5	5	5
Interior passenger volume (cu. ft.)	112.0	107.1	107.1
Cargo volume with rear seat up (cu. ft.) <sup>35</sup>	32.9	32.9	32.9
Cargo volume with rear seat down (cu. ft.) <sup>35</sup>	63.5	63.5	63.5
Fuel tank (gals.)	18.7	18.7	18.7
Maximum towing capacity (lbs.) <sup>42</sup>	1,500	1,500	1,500

Curb Weights — Lbs.			
	SV	SL	PLT
Base total (FWD/AWD)	4,193/4,323	—/4,388	—/4,438

2025 EPA Fuel Economy Estimates <sup>43</sup>			
	SV	SL	PLT
City/Hwy/Combined mpg (FWD)	21/27/23	—	—
City/Hwy/Combined mpg (AWD)	21/27/23	21/27/23	21/27/23

## NISSAN ROADSIDE ASSISTANCE

Your peace of mind is on us. For 36 months or 36,000 miles, whichever comes first, your new Nissan is covered for the following:<sup>44</sup>

- Flat-tire changes
- Trip Interruption benefits
- Jump starts
- Vehicle lockouts
- Emergency fuel delivery

**visit [NissanUSA.com/murano](https://www.nissanusa.com/murano)**



Sign up to get the latest on  
Nissan vehicles, news, and events.

<https://www.nissanusa.com/brochures/request-brochure.html>