

TOYOTA

2021 Venza

2021 VENZA

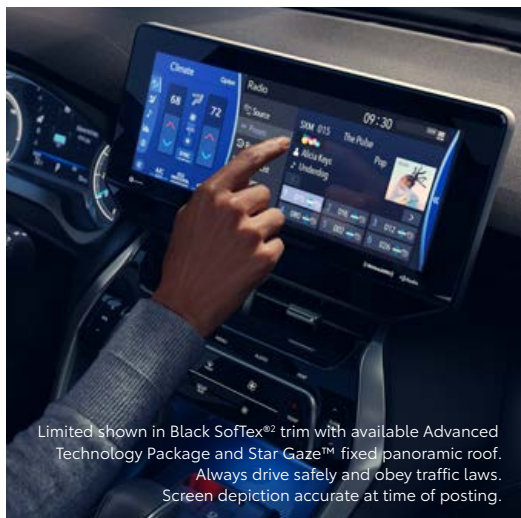
Elegance elevated.

Meet the 2021 Toyota Venza, where distinctive design meets cutting-edge technology. Boasting a tech-focused interior, intelligent hybrid powertrain and standard Electronic On-Demand All-Wheel Drive (AWD), Venza gives you the freedom to go the distance and discover more.



See numbered footnotes in Disclosures section.

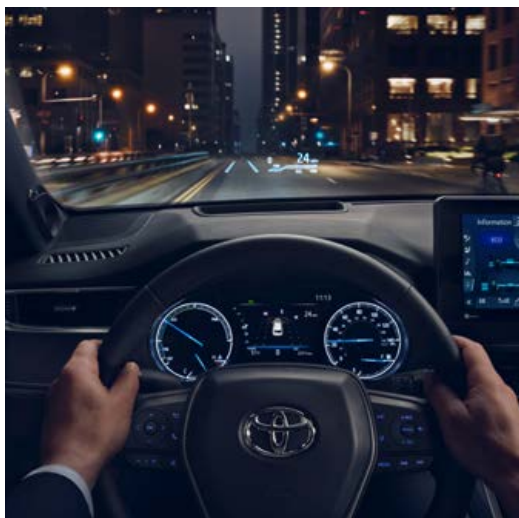
Advanced from every angle.



Limited shown in Black SoftTex^{®2} trim with available Advanced Technology Package and Star Gaze[™] fixed panoramic roof. Always drive safely and obey traffic laws. Screen depiction accurate at time of posting.

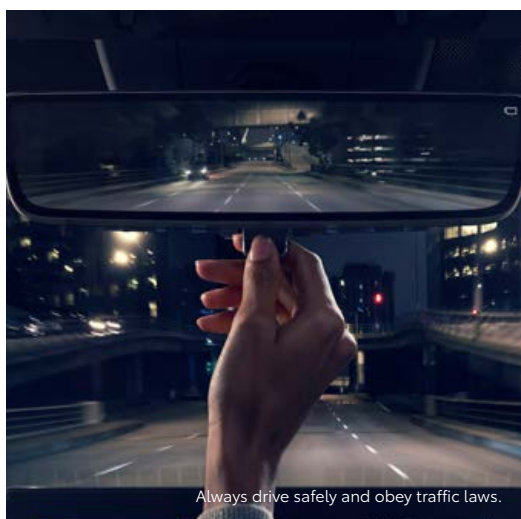
12.3-in. touchscreen display

Technology that's tailored to your needs. With easily customizable screens, Venza's available 12.3-in. touchscreen display lets you create the perfect setup for every drive.



Head-Up Display

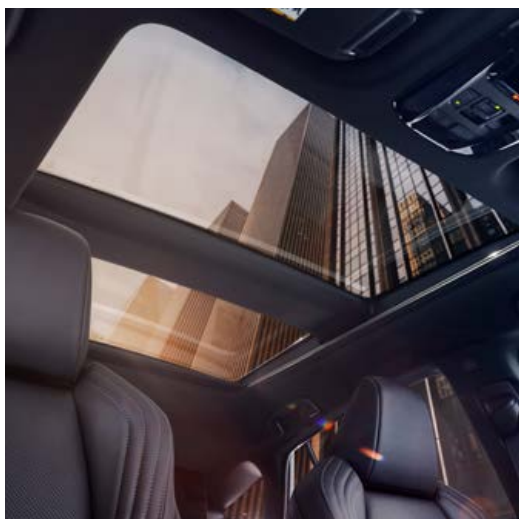
An available 10-in. color Head-Up Display (HUD) projects your speed, Hybrid System Indicator information and certain safety alerts right onto the windshield.



Always drive safely and obey traffic laws.

Digital rearview mirror with HomeLink[®]

Connected to a camera in the rear, Venza's available digital rearview mirror with HomeLink^{®3} casts a clearer and wider view of what's behind you.



Star Gaze[™] fixed panoramic roof

A first for Toyota, Venza's available Star Gaze[™] fixed panoramic roof transforms from opaque to transparent at the press of a button.



Limited shown in Coastal Gray Metallic with available Advanced Technology Package and Star Gaze™ fixed panoramic roof.

HYBRID

Take your discoveries farther.

Modern design meets modern muscle. With an all-hybrid powertrain delivering 219 combined net horsepower, Venza's refined power and advanced efficiency set it apart from the pack. And Venza's EPA-estimated 39 combined mpg rating⁴ helps you enjoy the extra miles.

39

EPA-est. mpg⁴



Electronic On-Demand All-Wheel Drive

Advanced capability, standard. When driving through uncertain conditions, Venza's sophisticated Electronic On-Demand All-Wheel Drive (AWD) system automatically supplies power to the rear wheels to help improve traction.



Limited shown in Black SofTex^{®2} trim with available Advanced Technology Package and Star Gaze[™] fixed panoramic roof.

INTERIOR

Exceptional comfort.

Quality-crafted seats, soft-touch materials and an available heated leather-trimmed steering wheel — every distinct detail inside Venza elevates your comfort, without sacrificing on style.

Heated and ventilated front seats

Heat up on winter mornings or cool down on your way home from the golf course. No matter the season, you can use Venza's available heated and ventilated front seats to make every drive feel just right.

Premium seats with contrast stitching

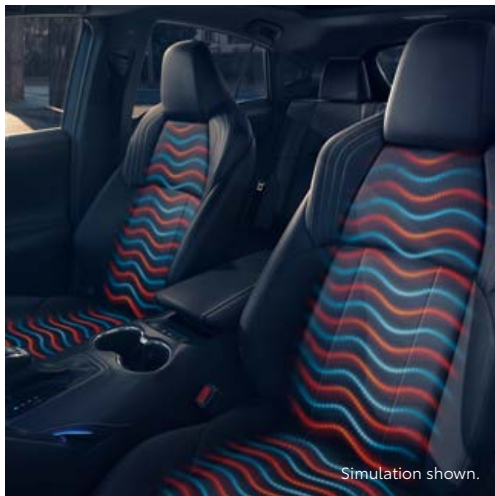
Venza's available SofTex[®]-trimmed² seats with color-keyed contrast stitching are as easy to sink into as they are to admire. And when you're behind the wheel, its 8-way power driver's seat with lumbar support lets you customize your seat of command.

Ambient lighting

Venza knows how to set the mood. After the sun sets, Venza's ambient lighting creates a refined atmosphere on late-night rides.

60/40 rear seats

Whether you're picking up a vintage coffee table from the boutique downtown or packing for a weekend getaway, Venza's 60/40 split rear seats easily fold down so you can create the space you need — with room to spare.



Simulation shown.



See numbered footnotes in Disclosures section.

EXTERIOR

Stand-alone style.

Out with the ordinary. A smart rebuttal to what's expected, Venza's contemporary design raises the standard of what a crossover should be.

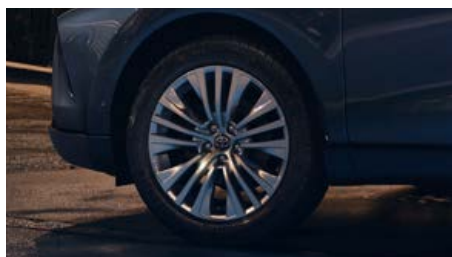


Limited shown in Coastal Gray Metallic with available Advanced Technology Package and Star Gaze™ fixed panoramic roof.



LED headlights

Available projector LED headlights and dual LED Daytime Running Lights (DRL) give Venza a captivating presence, day or night.



Alloy wheels

Style that suits you. Choose from standard 18-in. multi-spoke two-tone alloy wheels or available 19-in. multi-spoke Super Chrome alloy wheels to match your sense of style.



LED taillights

From behind, its distinctive taillight design acts as the perfect signature to Venza's modern look.

Amplify your drive.

Take advantage of smarter and convenient technologies designed to simplify your everyday life. From a suite of services that are there for you 24/7 to an immersive audio multimedia system, you can stay connected to your world.



Connected Services

Our available suite of Connected Services provides added convenience and peace of mind⁵

- ✓ **Safety Connect[®]**
Emergency SOS assistance and 24/7 Toyota Roadside Assistance^{6,7}
- ✓ **Service Connect**
Get personalized maintenance updates and vehicle health reports⁸
- ✓ **Remote Connect**
Start, lock/unlock your doors and more, using your compatible smart device⁹
- ✓ **Wi-Fi Connect**
Turn your Toyota into a hotspot with 4G connectivity.¹⁰
- ✓ **Destination Assist**
24/7 live agent assistance to locate your next destination.¹¹

To view included trial details, please visit toyota.com/connected-services.

Audio Multimedia

Make every drive more personal. By utilizing your vehicle's touchscreen display and audio multimedia capabilities, you'll always have access to what you want. Whether it's listening to your favorite playlist or finding the most scenic route to your destination, you'll enjoy the latest in connectivity and technologies that are all about you.



Apple CarPlay[®]

Bring along a familiar face. With Apple CarPlay^{®12} compatibility, you can use your compatible iPhone^{®13} with the audio multimedia system to get directions, make calls, send and receive messages, and listen to music — all while staying focused on your commute.



Android Auto[™]

Stay connected on the road. By pairing your compatible Android^{™14} phone with the audio multimedia system, Android Auto^{™15} lets you access your Google Assistant, get real-time traffic alerts, make and receive phone calls, listen to your favorite soundtrack and more.



SiriusXM[®] All Access 3-month trial subscription

Enjoy listening to what you want to hear. With SiriusXM^{®16} you get the deepest variety of ad-free music, more sports coverage than anywhere else, exclusive talk channels, every kind of comedy, and the most complete news coverage.¹⁷



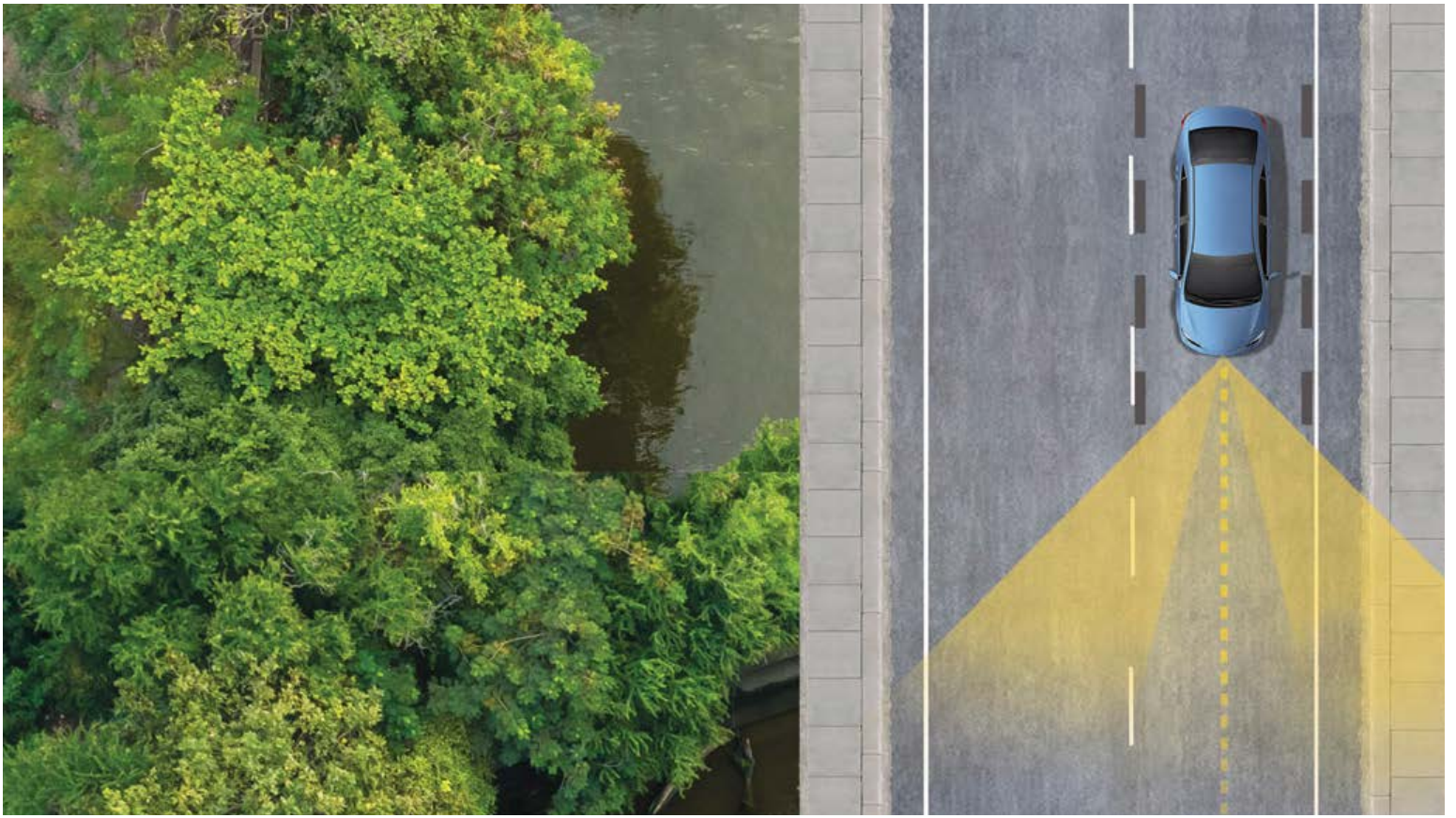
Amazon Alexa

Almost anywhere the road takes you, Amazon Alexa¹⁸ connectivity follows. With a smartphone connection and the Toyota+Alexa app, all you have to do is ask Alexa to play music, listen to audiobooks, hear the news, check weather, control smart-home devices and more.



JBL[®]

Feel the difference and hear the truth. Designed specifically for Toyota, JBL^{®19} finely tunes each speaker to the interior of the vehicle. Just turn up the volume to hear the crisp, rich, vibrant sound come through.



TOYOTA SAFETY SENSE™ 2.0 (TSS 2.0)

Peace of mind comes standard.

Toyota Safety Sense™ 2.0 (TSS 2.0)²⁰ is a bundle of active safety features included on many new Toyota vehicles at no additional cost. These innovative features were designed to help protect you and your passengers from harm.



Pre-Collision System with Pedestrian Detection²¹



Full-Speed Range Dynamic Radar Cruise Control²²



Lane Departure Alert with Steering Assist²³



Automatic High Beams²⁴



Lane Tracing Assist²⁵



Road Sign Assist²⁶

VENZA MODELS



LE

Includes these key features

Mechanical/Performance

- ✓ Hybrid engine: 2.5L 4-cylinder with 219 net hp
- ✓ Electronically controlled Continuously Variable Transmission (ECVT) with sequential Shift Mode
- ✓ Electronic On-Demand All-Wheel Drive (AWD)
- ✓ Normal, ECO, EV²⁷ and Sport drive modes
- ✓ 40 city/37 highway/39 combined EPA-est. mpg⁴

Exterior Features

- ✓ Multi-reflector LED headlights with LED DRL and auto on/off feature
- ✓ LED taillights and stop lights
- ✓ Color-keyed heated power outside mirrors with puddle lights and driver's-side auto-folding controls
- ✓ Multi-layer dark gray front grille with chrome accent
- ✓ 18-in. multi-spoke two-tone machine-finished alloy wheels
- ✓ Height-adjustable hands-free power liftgate with jam protection²⁸
- ✓ Black rear spoiler with LED center stop light
- ✓ Dual chrome-tipped exhaust

Interior Features

- ✓ Seating for five
- ✓ Dual zone automatic climate control
- ✓ Qi-compatible wireless smartphone charging²⁹
- ✓ Smart Key System³⁰ on front doors and liftgate with Push Button Start
- ✓ Fabric-trimmed seats
 - 8-way power-adjustable driver's seat
 - 60/40 split fold-down rear seat
- ✓ Leather-trimmed power tilt/telescopic 3-spoke steering wheel
- ✓ 4.2-in. Multi-Information Display (MID)
- ✓ Soft-touch dashboard with black piping
- ✓ Center console
- ✓ Silver interior door handles

Audio Multimedia

- ✓ Audio Plus includes:
 - 8-in. touchscreen and six speakers
 - Android Auto^{TM15} & Apple CarPlay^{®12} compatible
 - SiriusXM^{®16} with 3-month All Access trial subscription¹⁷
- ✓ Connected Services⁵ with Safety Connect^{®6}

Safety Features

- ✓ Toyota Safety Sense[™] 2.0 (TSS 2.0)²⁰
- ✓ Star Safety System[™]
- ✓ Full-Speed Range Dynamic Radar Cruise Control (DRCC)²²
- ✓ Blind Spot Monitor (BSM)³¹ with Rear Cross-Traffic Alert (RCTA)³²
- ✓ Eight airbags³³
- ✓ Tire Pressure Monitor System (TPMS)³⁴



XLE

Adds to or replaces features offered on LE

Mechanical/Performance

- ✓ Hybrid engine: 2.5L 4-cylinder with 219 net hp
- ✓ 40 city/37 highway/39 combined EPA-est. mpg⁴

Exterior Features

- ✓ LED projector headlights with dual LED DRL and auto on/off feature
- ✓ Low-profile silver roof rails
- ✓ 19-in. multi-spoke Super Chrome alloy wheels
- ✓ Color-keyed with gloss-black-accent rear spoiler with full-width LED center stop light

Interior Features

- ✓ Smart Key System³⁰ on all doors and liftgate with Push Button Start
- ✓ Fabric-trimmed seats with SofTex[®]-trimmed² bolsters
 - Heated front seats
- ✓ 7-in. Multi-Information Display (MID)
- ✓ Soft-touch dashboard with color-keyed piping with metal ends and ambient lighting
- ✓ Center console with ambient lighting and wood-grain-style trim
- ✓ Auto-dimming rearview mirror with HomeLink^{®3} universal transceiver
- ✓ Illuminated door handles and footwells

Audio Multimedia

- ✓ Audio Plus includes:
 - 8-in. touchscreen and six speakers
 - Android Auto^{TM15} & Apple CarPlay^{®12} compatible
 - SiriusXM^{®16} with 3-month All Access trial subscription¹⁷
- ✓ Connected Services⁵ with Safety Connect^{®6}

Safety Features

- ✓ Toyota Safety Sense[™] 2.0 (TSS 2.0)²⁰
- ✓ Star Safety System[™]
- ✓ Blind Spot Monitor (BSM)³¹ with Front and Rear Parking Assist with Automatic Braking (PA w/AB)³⁵

Packages/Options

- ✓ SofTex^{®2} Package includes:
 - Perforated SofTex[®]-trimmed² seats
 - Heated and ventilated front seats
 - Heated steering wheel
- ✓ Premium Audio with 12.3-in. touchscreen, nine JBL^{®19} speakers and Dynamic Navigation³⁶ with 3-year trial³⁷



Limited

Adds to or replaces features offered on XLE

Mechanical/Performance

- ✓ Hybrid engine: 2.5L 4-cylinder with 219 net hp
- ✓ 40 city/37 highway/39 combined EPA-est. mpg⁴

Exterior Features

- ✓ Color-keyed heated power outside mirrors with Venza logo puddle lights and driver's-side auto-folding controls

Interior Features

- ✓ Perforated SofTex[®]-trimmed² seats
 - Heated and ventilated front seats
- ✓ Digital rearview mirror with HomeLink^{®3} universal transceiver
- ✓ Bird's Eye View Camera³⁸ with Perimeter Scan
- ✓ Heated leather-trimmed power tilt/telescopic 3-spoke steering wheel
- ✓ Center stack with Intelligent Touch capacitive controls

Audio Multimedia

- ✓ Premium Audio includes:
 - 12.3-in. touchscreen and nine JBL^{®19} speakers
 - Dynamic Navigation³⁶ with 3-year trial³⁷
 - Android Auto^{TM15} & Apple CarPlay^{®12} compatible
 - SiriusXM^{®16} with 3-month All Access trial subscription¹⁷
- ✓ Connected Services⁵ with Safety Connect^{®6}

Safety Features

- ✓ Toyota Safety Sense[™] 2.0 (TSS 2.0)²⁰
- ✓ Star Safety System[™]

Packages/Options

- ✓ Advanced Technology Package includes:
 - 10-in. color Head-Up Display (HUD)
 - Rain-sensing variable intermittent windshield wipers
- ✓ Star Gaze[™] fixed panoramic roof

VENZA COLORS & TRIMS



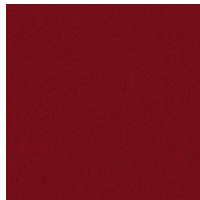
Black



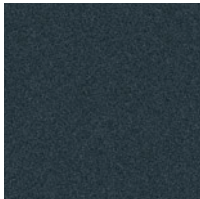
Celestial Black¹



Blueprint



Ruby Flare Pearl¹



Coastal Gray Metallic

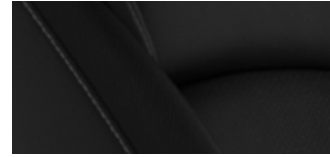


Titanium Glow



Blizzard Pearl¹

LE fabric shown in Black



Boulder

XLE fabric/SofTex^{®2} trim shown in Black and Java



Black



Boulder

Limited SofTex^{®2} trim shown in Black and Java



Black



Boulder

VENZA WHEELS



18-in. multi-spoke, two-tone machine-finished alloy wheels



19-in. multi-spoke, Super Chrome alloy wheels

VENZA ACCESSORIES

This is a great way to add extra personality to your Venza. Not every accessory is available in your area, so for a complete list of accessories, go to toyota.com/venza/accessories.



Activity mount



All-weather floor liners³⁹



All-weather cargo tray⁴⁰



Owner portfolio



Dashcam⁶⁵



Center console safe



Door edge guard



Roof rack cross bars⁴¹



Universal tablet holder⁴²

WARRANTIES

Every Toyota Car, Truck and SUV is built to exceptional standards. And that's not idle boasting. We back it up with these Limited Warranty Coverages:

Basic: 36 months/36,000 miles (all components other than normal wear and maintenance items).

Hybrid-Related Component Coverage: Hybrid-related components, including the battery control module, hybrid control module and inverter with converter, are covered for 8 years/100,000 miles. Refer to applicable *Warranty and Maintenance Guide* for details.

Hybrid Battery: HV battery is covered for 10 years or 150,000 miles, whichever comes first. Warranty coverage is subject to terms and conditions. Refer to applicable *Warranty and Maintenance Guide* for details.

Powertrain: 60 months/60,000 miles (engine, transmission/transaxle, drive system, seatbelts and airbags).

Rust-Through: 60 months/unlimited miles (corrosion perforation of sheet metal).

Emissions: Coverages vary under Federal and California regulations. Refer to applicable *Warranty and Maintenance Guide* for details.

Accessories: For Genuine Toyota Accessories purchased at the time of the new vehicle purchase, the Toyota Accessory Warranty coverage is in effect for 36 months/36,000 miles from the vehicle's in-service date, which is the same coverage as the Toyota New Vehicle Limited Warranty.

For Genuine Toyota Accessories purchased after the new vehicle purchase the coverage is 12 months, regardless of mileage, from the date the accessory was installed on the vehicle, or the remainder of any applicable new vehicle warranty, whichever provides greater coverage.

You may be eligible for transportation assistance if it's necessary that your vehicle be kept overnight for repairs covered under warranty. Please see your authorized Toyota dealership for further details.

For complete details about Toyota's warranties, please visit www.toyota.com, refer to the applicable *Warranty and Maintenance Guide* or see your Toyota dealer.

VENZA FEATURES⁴³

S = Standard O = Optional P = Available as part of a package

Exterior

	LE	XLE	Limited
Aerodynamic underbody panels and integrated rear spoiler; black rocker panels	S	S	S
Active grille shutter and aerodynamic side garnish	S	S	S
Front and rear tire spats	S	S	S
18-in. multi-spoke, two-tone machine-finished alloy wheels with 225/60R18 tires	S		
19-in. multi-spoke, Super Chrome alloy wheels with 225/55R19 tires		S	S
Star Gaze™ fixed panoramic roof with on/off control and power sunshade (removes low-profile silver roof rails)			O
Low-profile silver roof rails		S	S
Color-keyed, heated power outside mirrors with turn signal and blind spot warning ³¹ indicators, puddle lights and driver's-side auto-folding controls	S	S	
Color-keyed, heated power outside mirrors with turn signal and blind spot warning ³¹ indicators, puddle lights with Venza logo and driver's-side auto-folding controls			S
Multi-layer dark gray front grille with chrome accent	S	S	S
Dual chrome-tipped exhaust	S	S	S
Black front and rear lower bumper garnish	S		
Black front and rear lower bumper garnish with chrome accents		S	S
Color-keyed outside door handles with touch-sensor lock/unlock feature on front doors and liftgate	S		
Color-keyed outside door handles with touch-sensor lock/unlock feature on all doors and liftgate		S	S
Privacy glass on all rear side, quarter and liftgate windows	S	S	S
Height-adjustable, hands-free power liftgate with jam protection ²⁸	S	S	S
Multi-reflector LED headlights and Automatic High Beams (AHB) ²⁴ with auto on/off feature	S		
LED projector headlights and Automatic High Beams (AHB) ²⁴ with auto on/off feature		S	S
LED taillights and stop lights	S	S	S
Black rear spoiler with LED center stop light	S		
Color-keyed with gloss-black-accent rear spoiler with full-width LED center stop light		S	S
LED Daytime Running Lights (DRL) with on/off feature	S		
Dual LED Daytime Running Lights (DRL) with on/off feature		S	S
Washer-linked variable intermittent windshield wipers	S	S	S
Rain-sensing washer-linked variable intermittent windshield wipers			P
Intermittent rear window wiper	S	S	S
Color-keyed roof-mounted shark-fin antenna	S	S	S

Interior

Qi-compatible wireless smartphone charging ²⁹ with charge indicator light	S	S	S
Analog speedometer, hybrid power meter, coolant temperature and fuel gauges; 4.2-in. color LCD Multi-Information Display (MID) with instrumentation and customizable settings, odometer, tripmeters, clock, outside temperature, rear passenger seatbelt indicators, hybrid energy monitor, fuel economy information, trip timer, shift-position, TPMS ³⁴ scheduled maintenance indicators, and warning messages	S		
Analog speedometer, hybrid power meter, coolant temperature and fuel gauges; 7-in. color LCD Multi-Information Display (MID) with customizable settings, odometer, tripmeters, clock, outside temperature, rear passenger seatbelt indicators, hybrid energy monitor, fuel economy information, trip timer, shift-position, TPMS ³⁴ scheduled maintenance indicators, and warning messages		S	S
10-in. color Head-Up Display (HUD) with speedometer, Lane Departure and Hybrid System Indicator			P
Four USB charge ports ⁴⁴ (two 1.5 AMP front, two 2.1 AMP rear)	S	S	S
Day/night rearview mirror	S		
Auto-dimming rearview mirror with HomeLink ^{®3} universal transceiver		S	
Digital rearview mirror with HomeLink ^{®3} universal transceiver			S
Integrated backup camera ⁴⁵ with projected path and dynamic gridlines	S	S	
Integrated backup camera ⁴⁵ with projected path, backup camera washer and dynamic gridlines			S
Bird's Eye View Camera ³⁸ with Perimeter Scan, 360-degree Overhead View in low-speed drive and reverse, and Curb View			S
LED front maplights and overhead/rear cargo dome light	S	S	S
Front driver and passenger doorsills and illuminated footwells		S	
Front driver and passenger illuminated doorsills and footwells			S
Leather-trimmed power tilt/telescopic 3-spoke steering wheel with silver accent and controls for audio, Multi-Information Display (MID), Bluetooth ^{®46} hands-free phone, voice-command, Dynamic Radar Cruise Control (DRCC) ²² Lane Departure Alert (LDA) ²³ and Lane Tracing Assist (LTA) ²⁵	S		
Leather-trimmed power tilt/telescopic 3-spoke steering wheel with chrome accent, memory function and controls for audio, Multi-Information Display (MID), Bluetooth ^{®46} hands-free phone, voice-command, Dynamic Radar Cruise Control (DRCC) ²² Lane Departure Alert (LDA) ²³ and Lane Tracing Assist (LTA) ²⁵		S	
Heated leather-trimmed power tilt/telescopic 3-spoke steering wheel with chrome accent, memory function and controls for audio, Multi-Information Display (MID), Bluetooth ^{®46} hands-free phone, voice-command, Dynamic Radar Cruise Control (DRCC) ²² Lane Departure Alert (LDA) ²³ and Lane Tracing Assist (LTA) ²⁵		P	S
Turn signal stalk with headlight controls and one-touch 3-blink lane change turn signals	S	S	S
Wiper control stalk with front and rear window wiper controls	S	S	S

VENZA FEATURES

S = Standard O = Optional P = Available as part of a package

Interior (continued)

	LE	XLE	Limited
Overhead console with LED maplights, passenger airbag ³³ on/off indicators and Safety Connect ⁸⁶ button	S	S	S
Overhead console with Star Gaze™ fixed panoramic roof on/off controls and power sunshade controls, LED maplights, passenger airbag ³³ on/off indicators and Safety Connect ⁸⁶ button			O
Electric Parking Brake ⁴⁷ with Brake Hold ⁴⁸	S	S	S
Dual zone automatic climate control system with dust and pollen filter and rear-seat vents, featuring push-button/dial controls	S	S	
Dual zone automatic climate control system with dust and pollen filter and rear-seat vents, featuring Intelligent Touch capacitive controls		O	S
Rear liftgate window defogger	S	S	S
Fabric-trimmed seats; 8-way power-adjustable driver's seat with power lumbar support; driver and front passenger seatback pockets	S		
Fabric-trimmed seats with SofTex®-trimmed ² bolsters; heated front seats; 8-way power-adjustable driver's seat with memory function and power lumbar support; driver and front passenger seatback pockets		S	
Perforated SofTex®-trimmed ² seats; heated and ventilated front seats; 8-way power-adjustable driver's seat with memory function and power lumbar support; 4-way power-adjustable front passenger seat; driver and front passenger seatback pockets		P	S
Soft-touch dashboard with black piping	S		
Soft-touch dashboard with color-keyed piping with metal ends and ambient lighting		S	S
Center stack with push-button/dial climate controls	S	S	
Center stack with Intelligent Touch capacitive controls		O	S
Black soft-touch armrests	S		
Soft-touch armrests with wood-grain-style trim		S	S
Carpet flooring with driver footrest	S	S	S
3-passenger rear seating with 60/40 split fold-flat seat with center armrest and cup holders	S	S	S
Center console with ambient lighting, Push Button Start, drive mode switch, Electric Parking Brake, ⁴⁷ automatic Brake Hold ⁴⁸ controls and covered storage compartment with 12V/120W input, ⁴⁹ removable utility tray and sliding cover	S		
Center console with ambient lighting and wood-grain-style trim, Push Button Start, drive mode switch, Electric Parking Brake, ⁴⁷ automatic Brake Hold ⁴⁸ controls, heated front-seat controls and covered storage compartment with 12V/120W input, ⁴⁹ removable utility tray and sliding cover		S	
Center console with ambient lighting and wood-grain-style trim, Push Button Start, drive mode switch, Electric Parking Brake, ⁴⁷ automatic Brake Hold ⁴⁸ controls, heated and ventilated front-seat controls and covered storage compartment with 12V/120W input, ⁴⁹ removable utility tray and sliding cover			S
Passenger-side glove compartment	S	S	S
Leather-trimmed shift lever with sequential mode	S	S	S
Eight total cup and bottle holders; four cup holders and four bottle holders	S	S	S
Power windows with auto up/down and jam protection in all positions	S	S	S
Smart Key System ³⁰ on front doors and liftgate with Push Button Start, remote keyless entry system with lock/unlock, panic and remote illuminated entry	S		
Smart Key System ³⁰ on all doors and liftgate with Push Button Start, remote keyless entry system with lock/unlock, panic and remote illuminated entry		S	S
Power door locks with shift-linked automatic lock/unlock feature	S	S	S
Silver interior door handles	S	S	S
Sun visors with sliding extensions and illuminated vanity mirrors	S	S	S
Rear fold-down center armrest with two cup holders	S	S	S
Three black scuff plates with nylon deck board strap in cargo area	S		
Three silver scuff plates with leather deck board strap in cargo area		S	S
Cargo area tonneau cover	S	S	S

Audio Multimedia

Audio Plus — includes 8-in. touchscreen, AM/FM/HD Radio,^{TM50} six speakers, one USB media port⁴⁴ and one AUX media port, three additional USB charge ports,⁴⁴ advanced voice recognition,⁵¹ hands-free phone capability and music streaming⁴⁶ via Bluetooth^{®46} wireless technology, Android Auto^{TM15} & Apple CarPlay^{®12} & Amazon Alexa¹⁸ compatible, SiriusXM^{®16} with 3-month All Access trial subscription!¹⁷ See toyota.com/audio-multimedia for details. Connected Services⁵ — Safety Connect⁸⁶ with 1-year trial,⁵² Service Connect⁹ with 10-year trial,⁵³ Remote Connect⁹ with 1-year trial,⁵⁴ Wi-Fi Connect¹⁰ with up to 2 GB within 3-month trial.⁵⁵ See toyota.com/connected-services for details.

Premium Audio with Dynamic Navigation ³⁶ and JBL ^{®19} — includes 12.3-in. touchscreen and Intelligent Touch capacitive controls, AM/FM/HD Radio, ^{TM50} nine JBL ^{®19} speakers, including subwoofer and amplifier, one USB media port ⁴⁴ and one AUX media port, three additional USB charge ports, ⁴⁴ hands-free phone capability and music streaming ⁴⁶ via Bluetooth ^{®46} wireless technology, Android Auto ^{TM15} & Apple CarPlay ^{®12} & Amazon Alexa ¹⁸ compatible, SiriusXM ^{®16} with 3-month All Access trial subscription! ¹⁷ See toyota.com/audio-multimedia for details. Connected Services ⁵ — Safety Connect ⁸⁶ with 1-year trial, ⁵² Service Connect ⁹ with 10-year trial, ⁵³ Remote Connect ⁹ with 1-year trial, ⁵⁴ Wi-Fi Connect ¹⁰ with up to 2 GB within 3-month trial, ⁵⁵ and Destination Assist ¹¹ with 1-year trial. ⁵⁶ See toyota.com/connected-services for details.		O	S
---	--	---	---

VENZA FEATURES

S = Standard O = Optional P = Available as part of a package

Safety and Convenience

	LE	XLE	Limited
Toyota Safety Sense™ 2.0 (TSS 2.0) ²⁰ — Pre-Collision System with Pedestrian Detection (PCS w/PD) ²¹ Lane Departure Alert with Steering Assist (LDA w/SA) ²³ Lane Tracing Assist (LTA) ²⁵ Automatic High Beams (AHB) ²⁴ Full-Speed Range Dynamic Radar Cruise Control (DRCC) ²² and Road Sign Assist (RSA) ²⁶	S	S	S
STAR SAFETY SYSTEM™ Star Safety System™ — includes Enhanced Vehicle Stability Control (VSC) ⁵⁷ Traction Control (TRAC), Anti-lock Brake System (ABS), Electronic Brake-force Distribution (EBD), Brake Assist (BA) ⁵⁸ and Smart Stop Technology® (SST) ⁵⁹	S	S	S
Eight airbags ³³ — includes driver and front passenger Advanced Airbag System, driver and front passenger seat-mounted side airbags, driver knee airbag, front passenger seat cushion airbag, and front and rear side curtain airbags	S	S	S
3-point seatbelts for all seating positions; driver-side Emergency Locking Retractor (ELR) and Automatic/Emergency Locking Retractor (ALR/ELR) on all passenger seatbelts	S	S	S
Adjustable front seatbelt shoulder anchors	S	S	S
Front seatbelts with seatbelt pretensioners with force limiters	S	S	S
LATCH (Lower Anchors and Tethers for CHildren) includes lower anchors on outboard rear seats and tether anchors on all rear seats	S	S	S
Child-protector rear door locks	S	S	S
Front and rear side-impact door beams	S	S	S
Tire Pressure Monitor System (TPMS) ³⁴	S	S	S
Safety Connect ⁸⁶ — includes Emergency Assistance, Stolen Vehicle Locator, ⁶⁰ Roadside Assistance ⁷ and Automatic Collision Notification. Available by subscription. Complimentary one-year trial subscription ⁵²	S	S	S
Blind Spot Monitor (BSM) ³¹ with Rear Cross-Traffic Alert (RCTA) ³²	S		
Blind Spot Monitor (BSM) ³¹ with Front and Rear Parking Assist with Automatic Braking (PA w/AB) ³⁵		S	S
Hill Start Assist Control (HAC) ⁶¹	S	S	S
Audible Vehicle Proximity Notification System (VPNS) ⁶²	S	S	S
Anti-theft system with engine immobilizer ⁶³ and alarm	S	S	S

Packages and Options

Advanced Technology Package — includes Head-Up Display (HUD) with speedometer and Hybrid System Indicator, and rain-sensing variable intermittent windshield wipers			P
SoftTex^{®2} Package — includes perforated SoftTex [®] -trimmed ² seats; heated and ventilated front seats; 8-way power-adjustable driver's seat with memory function and power lumbar support; 4-way power-adjustable front passenger seat; driver and front passenger seatback pockets; heated leather-trimmed power tilt/telescopic 3-spoke steering wheel		P	
Star Gaze™ fixed panoramic roof — electrochromic fixed panoramic glass roof with on/off control and power sunshade (removes low-profile silver roof rails)			O
Premium Audio with Dynamic Navigation ³⁶ and JBL ^{®19} — includes 12.3-in. touchscreen and Intelligent Touch capacitive controls, AM/FM/HD Radio, ^{TM50} nine JBL ^{®19} speakers, including subwoofer and amplifier, one USB media port ⁴⁴ and one AUX media port, three additional USB charge ports ⁴⁴ hands-free phone capability and music streaming ⁴⁶ via Bluetooth ^{®46} wireless technology, Android Auto ^{TM15} & Apple CarPlay ^{®12} & Amazon Alexa ¹⁶ compatible, SiriusXM ^{®16} with 3-month All Access trial subscription. ¹⁷ See toyota.com/audio-multimedia for details. Connected Services ⁵ — Safety Connect ⁸⁶ with 1-year trial, ⁵² Service Connect ⁸ with 10-year trial, ⁵³ Remote Connect ⁹ with 1-year trial, ⁵⁴ Wi-Fi Connect ¹⁰ with up to 2 GB within 3-month trial, ⁵⁵ and Destination Assist ¹¹ with 1-year trial. ⁵⁶ See toyota.com/connected-services for details.		O	S

VENZA SPECIFICATIONS

S = Standard O = Optional P = Available as part of a package

Mechanical/Performance

LE XLE Limited

ENGINE

2.5-Liter Dynamic Force 4-Cylinder Engine with DOHC 16-Valve with D-4S Dual-Injection and Dual Variable Valve Timing with intelligence (VVT-i)	S	S	S
--	---	---	---

POWERTRAIN

219 combined net hp — includes internal combustion engine with 176 hp and electric motor powertrain system	S	S	S
--	---	---	---

COMPRESSION RATIO

14.0:1 14.0:1 14.0:1

INDUCTION SYSTEM

D-4S Dual-Injection (Direct-Injection and Port-Injection) EFI with Electronic Throttle Control System with intelligence (ETCS-i)	S	S	S
--	---	---	---

EMISSION RATING

Super Ultra Low Emission Vehicle (SULEV) ⁶⁴	S	S	S
--	---	---	---

ELECTRIC MOTOR GENERATORS

Power output, front/rear	118/54 hp (88/40 kW)	118/54 hp (88/40 kW)	118/54 hp (88/40 kW)
Electric motor voltage	650 V (max sys.)	650 V (max sys.)	650 V (max sys.)

TRACTION BATTERY

Lithium-ion battery	S	S	S
Voltage	252 V	252 V	252 V

TRANSMISSION

Electronically controlled Continuously Variable Transmission (ECVT) with sequential Shift Mode	S	S	S
--	---	---	---

DRIVETRAIN

Electronic On-Demand All-Wheel Drive (AWD)	S	S	S
--	---	---	---

CAPABILITY

Hill Start Assist Control (HAC) ⁶¹	S	S	S
Active Cornering Assist (ACA)	S	S	S
Ground clearance (in.)	7.68	7.68	7.68
Approach/departure angle (degrees)	18.1/21.8	18.4/21.9	18.4/21.9

AWD MONITOR

All-Wheel Drive Integrated Management (AIM) with Multi-Information Display (MID) and touchscreen monitor	S	S	S
--	---	---	---

DRIVE MODE

Drive mode switch with Sport, ECO and Normal Modes, and EV Mode ²⁷ button	S	S	S
--	---	---	---

BODY CONSTRUCTION

Reinforced unitized steel body	S	S	S
--------------------------------	---	---	---

SUSPENSION

Independent MacPherson strut front suspension with stabilizer bar; multi-link rear suspension with stabilizer bar	S	S	S
---	---	---	---

STEERING

Electric Power Steering (EPS); electric power-assisted rack-and-pinion	S	S	S
Steering wheel turns (lock-to-lock)	2.8	2.6	2.6
Steering ratio	14.3:1	14.4:1	14.4:1
Turning circle diameter, curb-to- curb (ft.)	36.1	37.4	37.4

BRAKES

Electronically Controlled Braking (ECB) system with integrated regenerative braking	S	S	S
Front diameter (in.)	12.0	12.0	12.0
Rear diameter (in.)	11.1	11.1	11.1

VENZA SPECIFICATIONS

S = Standard O = Optional P = Available as part of a package

Dimensions

	LE	XLE	Limited
EXTERIOR (in.)			
Overall height (with antenna)	65.9	65.9	65.9
Overall length	186.6	186.6	186.6
Overall width	73.0	73.0	73.0
Track (front/rear)	63.0/63.8	63.0/63.8	63.0/63.8
Wheelbase	105.9	105.9	105.9
Head room, front/rear (with Star Gaze™ fixed panoramic roof)	38.6/39.0 (N/A)	38.6/39.0 (N/A)	38.6/39.0 (38.1/36.9)
Hip room (front/rear)	54.4/45.2	54.4/45.2	54.4/45.2
Leg room (front/rear)	40.9/37.8	40.9/37.8	40.9/37.8
Shoulder room (front/rear)	57.4/56.9	57.4/56.9	57.4/56.9
Length behind rear seat (in.)	39.2	39.2	39.2
Minimum/maximum width (in.)	39.7/49.8	39.7/49.8	39.7/49.8
Minimum/maximum height (in.)	27.6	27.6	27.6

Weights and Capacities

Manufacturer-estimated interior volume (cu. ft.) (with Star Gaze™ fixed panoramic roof)	127.1	127.1	127.1 (123.8)
Manufacturer-estimated passenger volume (cu. ft.) (with Star Gaze™ fixed panoramic roof)	98.3	98.3	98.3 (95.2)
Cargo volume (cu. ft.) ⁴⁰ behind front/rear seat, estimated (with Star Gaze™ fixed panoramic roof)	55.1/28.8	55.1/28.8	55.1/28.8 (54.9/28.7)
Curb weight (lb.)	3847	3891	3913
Fuel tank (gal.)	14.5	14.5	14.5
Gross Vehicle Weight Rating (GVWR) (lb.)	4920	4920	4920
Seating capacity	5	5	5

Tires

All-season radials	S	S	S
Temporary	S	S	S

Mileage Estimates (mpg city/highway/combined)⁴

40/37/39	40/37/39	40/37/39
----------	----------	----------

DISCLOSURES

1. Extra-cost color. 2. SofTex® is a registered trademark of Toyota Motor Sales, U.S.A., Inc. 3. HomeLink® and the HomeLink® house icon are registered trademarks of Gentex Corporation. 4. EPA-estimated 40 city/37 hwy/39 combined mpg for 2021 Venza. Use for comparison purposes only. Your mileage will vary for many reasons, including your vehicle's condition and how/where you drive. See www.fueleconomy.gov. 5. Connected Services depends on an operative telematics device, a cellular connection, navigation map data, GPS signal strength and other factors outside of Toyota's control, all of which can limit system functionality or availability, including access to response center and emergency support. Service may vary by vehicle and region. Subscription required after trial. Terms of Use apply. Data charges may apply. Apps and services subject to change at any time without notice. See toyota.com/connected-services for details. To learn about Toyota's data collection, use, sharing and retention practices, please visit <https://www.toyota.com/privacycts/>. Stolen vehicle police report required to use Stolen Vehicle Locator. 6. Safety Connect® depends on an operative telematics device, a cellular connection, GPS signal strength and other factors outside of Toyota's control, all of which can limit system functionality or availability, including access to response center and emergency support. Stolen vehicle police report required to use Stolen Vehicle Locator. Some features may require the Toyota app. Registration required. Subscription required after trial. Service subject to change at any time without notice. Terms of Use apply. Data charges may apply. Service may vary by vehicle and region. See usage precautions and service limitations in *Owner's Manual* and at toyota.com/connected-services/ for additional details. To learn about Toyota's data collection, use, sharing and retention practices, please visit <https://www.toyota.com/privacycts/>. 7. Requires adequate cellular coverage and GPS signal strength. May not work in all areas. Service may vary by vehicle and region. See Toyota Dealer for details and exclusions. 8. Information provided is based on the last time data was collected from the vehicle and may not be up to date. Service Connect depends on an operative telematics device, a cellular connection, navigation map data, GPS signal strength and other factors outside of Toyota's control, which can limit system functionality or availability. Service may vary by vehicle and region. Registration required. Service subject to change at any time without notice. Terms and conditions of subscription service agreement apply. See usage precautions and service limitations in *Owner's Manual* and at toyota.com/connected-services for additional details. To learn about Toyota's data collection, use, sharing and retention, please visit <https://www.toyota.com/privacycts/>. 9. Use only if aware of circumstances surrounding vehicle and it is legal and safe to do so (e.g., do not remotely start engine if vehicle is in an enclosed space or vehicle is occupied by a child). Toyota's Remote Connect depends on an operative telematics device, a cellular connection, GPS signal strength and other factors outside of Toyota's control, which can limit system functionality and availability. Service may vary by vehicle and region. Registration and Toyota app download required. Subscription required after trial. Terms of Use apply. Data charges may apply. Remote start/stop not available on manual-transmission-equipped vehicles. Services subject to change at any time without notice. See usage precautions and service limitations in *Owner's Manual* and at https://www.toyota.com/connected-services for additional details. To learn about Toyota's data collection, use, sharing and retention practices, please visit <https://www.toyota.com/privacycts/>. 10. Eligible vehicle and wireless service required. Coverage and service not available everywhere. Valid in the contiguous U.S. and Alaska. Do not drive distracted. Go to att.com/toyota for terms and conditions. Data usage and charges apply. Up to 5 devices can be supported using in-vehicle connectivity. Apps and services subject to change at any time without notice. 11. Destination Assist depends on an operative telematics device, a cellular connection, navigation map data and GPS signal strength and other factors outside of Toyota's control, which can limit system ability functionality or availability. Use common sense when relying on this information. Service may vary by vehicle and region. Registration required. Services subject to change at any time without notice. Terms of Use apply. See *Owner's Manual* and toyota.com/connected-services for additional limitations and details. To learn about Toyota's data collection, use, sharing and retention practices, please visit <https://www.toyota.com/privacycts/>. 12. Apps and services are subject to change at any time without notice. Data charges may apply. Apple CarPlay® functionality requires a compatible iPhone® connected with an approved data cable into the USB media port. Apple CarPlay® is a registered trademark of Apple Inc. 13. iPhone® is a registered trademark of Apple Inc. All rights reserved. 14. Android is a trademark of Google LLC. 15. Vehicle user interface is a product of Google and its terms and privacy statement apply. To use Android Auto on your audio display, you'll need an Android Auto compatible vehicle and Android phone. For phone compatibility visit: <https://www.android.com/auto/>. Requires compatible smartphone connected with an approved data cable into the USB media port, and data plan rates apply. Apps and services vary by phone carrier and are subject to change at any time without notice. Android, Android Auto and Waze are trademarks of Google. 16. SiriusXM® audio services require a subscription sold separately by Sirius XM Radio Inc. If you decide to continue service after your trial, the subscription plan you choose will automatically renew thereafter and you will be charged according to your chosen payment method at then-current rates. Fees and taxes apply. To cancel, you must call SiriusXM at 1-866-635-2349. See SiriusXM Customer Agreement for complete terms at www.siriusxm.com. All fees and programming subject to change. Not all vehicles or devices are capable of receiving all services offered by SiriusXM. Current information and features may not be available in all locations, or on all receivers. ©2021 Sirius XM Radio Inc. SiriusXM and all related marks and logos are trademarks of Sirius XM Radio Inc. 17. SiriusXM All Access trial length and service availability may vary by model, model year or trim. 18. Amazon, Alexa and all related logos are trademarks of Amazon.com, Inc. or its affiliates. Certain functions require adequate signal strength and smartphone technology/connectivity. Not all Amazon Alexa functionality is available for in-vehicle use. See applicable app for details. Download of the Toyota+Alexa app is required to begin in-vehicle use of Alexa. Data charges may apply for certain functions. Apps, prices and services subject to change at any time without notice. To learn more, go to <https://www.toyota.com/audio-multimedia>. To learn more about Toyota's data collection, use, sharing and retention practices, please visit <https://www.toyota.com/privacycts/>. 19. JBL® is a registered trademark of Harman International Industries, Inc. 20. Toyota Safety Sense™ effectiveness is dependent on many factors including road, weather and vehicle conditions. Drivers are responsible for their own safe driving. Always pay attention to your surroundings and drive safely. See *Owner's Manual* for additional limitations and details. 21. The Pre-Collision System (PCS) with Pedestrian Detection (PD) is designed to determine if impact is imminent and help reduce impact speed and damage in certain frontal collisions involving a vehicle, a pedestrian or a bicyclist. PCS w/PD is not a substitute for safe and attentive driving. System effectiveness depends on many factors, such as speed, size and position of pedestrian or bicyclist and weather, light and road conditions. See *Owner's Manual* for additional limitations and details. 22. Full-Speed Range Dynamic Radar Cruise Control (DRCC) is designed to assist the driver and is not a substitute for safe and attentive driving practices. System effectiveness is dependent on many factors including road, weather and traffic conditions. Vehicles with manual transmission have regular DRCC. See *Owner's Manual* for additional limitations and details. 23. Lane Departure Alert with Steering Assist is designed to read visible lane markers under certain conditions. It provides a visual and audible alert and slight steering force when lane departure is detected. It is not a collision-avoidance system or a substitute for safe and attentive driving. Effectiveness is dependent on many factors including road, weather and vehicle conditions. See *Owner's Manual* for additional limitations and details. 24. Automatic High Beams operate at speeds above 25 mph. Factors such as a dirty windshield, weather, lighting and terrain limit effectiveness, requiring the driver to manually operate the high beams. See *Owner's Manual* for additional limitations and details. 25. Lane Tracing Assist (LTA) is designed to read visible lane markers and detect other vehicles under certain conditions. It is only operational when DRCC is engaged. See *Owner's Manual* for additional limitations and details. 26. Do not rely exclusively on Road Sign Assist (RSA). RSA is a driver support system that utilizes the vehicle's forward-facing camera and navigation system (when data is available) to recognize certain road signs and provide information to the driver via the multi-information display and/or Head-Up Display. Effectiveness is dependent on road, weather, vehicle and sign conditions. Use common sense when using RSA and do not drive distracted. See *Owner's Manual* for additional limitations and details. 27. EV Mode lets you operate solely on battery power at low speeds for short distances and in limited circumstances, such as in a parking garage. Different conditions may prevent or limit usage. See your *Owner's Manual* for limitations and details. 28. Water, weather, dirt, and other conditions may cause the hands-free power liftgate sensor to not operate properly. See *Owner's Manual* for limitations. 29. Qi wireless charging may not be compatible with all mobile phones, MP3/WMA players and like models. When using the wireless charging system, avoid placing metal objects between the wireless charger and the mobile device when charging is active. Doing so may cause metal objects to become hot and could cause burns. 30. The Smart Key System may interfere with some pacemakers or cardiac defibrillators. If you have one of these medical devices, please talk to your doctor to see if you should deactivate this system. 31. Do not rely exclusively on the Blind Spot Monitor. Always look over your shoulder and use your turn signal. There are limitations to the function, detection and range of the monitor. See *Owner's Manual* for additional limitations and details. 32. Do not rely exclusively on the Rear Cross-Traffic Alert system. Always look over your shoulder and use your mirrors to confirm rear clearance. There are limitations to the function, detection and range of the system. See *Owner's Manual* for additional limitations and details. 33. Airbag systems are Supplemental Restraint Systems and are designed to inflate only under certain conditions and in certain types of severe collisions. To decrease the risk of injury from an inflating airbag, always wear seatbelts and sit upright in the middle of the seat as far back as possible. Do not put objects in front of an airbag or around the seatback. Do not use a rearward-facing child seat in any front passenger seat. See *Owner's Manual* for additional limitations and details. 34. The Tire Pressure Monitor System alerts the driver when tire pressure is critically low. For optimal tire wear and performance, tire pressure should be checked regularly with a gauge; do not rely solely on the monitor system. See *Owner's Manual* for additional limitations and details. 35. At speeds of 9 mph or less, Front and Rear Parking Assist with Automatic Braking (PA w/AB) is designed to assist drivers in avoiding potential collisions with nearby static objects when the vehicle is in Drive or Reverse and approaching crossing vehicles when the vehicle is in Reverse. Do not overly rely on PA w/AB. Always look around outside the vehicle and use mirrors to confirm clearance. Certain vehicle and environmental factors, including an object or vehicle's shape, size and composition, may affect the system's effectiveness. See *Owner's Manual* for additional limitations and details. 36. Dynamic Navigation depends on an operative telematics device, a cellular connection, navigation map data and GPS signal strength, and other factors outside of Toyota's control, which can limit system functionality or availability. Services not available in every city or roadway. Use common sense when relying on information provided. Service may vary by vehicle and region. Registration is required. Terms of Use apply. See *Owner's Manual* and <https://toyota.com/connected-services/> for additional limitations and details. To learn about Toyota's data collection, use, sharing and retention practices, please visit <https://www.toyota.com/privacycts/>. 37. The Dynamic Navigation three-year trial period begins on the original date of purchase or lease of a new vehicle. After the trial period expires, enrollment in paid subscription is required to access the service. 38. The Bird's Eye View Camera does not provide a comprehensive view of the area surrounding the vehicle and you should also look around the vehicle, using mirrors to confirm surrounding clearance. Environmental conditions may limit effectiveness and view may become obscured. See *Owner's Manual* for additional limitations and details. 39. This floor mat/floor liner was designed specifically for use in your model and model year vehicle and SHOULD NOT be used in any other vehicle. To avoid potential interference with pedal operation, each mat/liner must be secured with its fasteners. Do not install a floor mat/floor liner on top of an existing floor mat/floor liner. 40. Cargo and load capacity limited by weight and distribution. Always properly secure cargo and cargo area. 41. Do not overload your vehicle. See *Owner's Manual* for weight limits and restrictions. 42. The universal tablet holder is intended for passengers only. Drivers should always be sure to obey traffic regulations and maintain awareness of the road and traffic conditions at all times. Use of aftermarket accessories may pose an increased risk of injury to occupants in the event of an accident. Tablet sold separately. 43. Toyota strives to build vehicles to match customer interest and thus they typically are built with popular options and option packages. Not all options/packages are available separately and some may not be available in all regions of the country. See toyota.com for information about options/packages commonly available in your area. If you would prefer a vehicle without any or with different options, contact your dealer to check for current availability or the possibility of placing a special order. Color(s) depicted may vary based on multiple factors, including ambient lighting and the format in which it is being viewed (e.g., computer, mobile device or print).

DISCLOSURES

44. May not be compatible with all mobile phones, MP3/WMA players and like models. **45.** The backup camera does not provide a comprehensive view of the rear area of the vehicle and you should also look around the vehicle, using mirrors to confirm rearward clearance. Environmental conditions may limit effectiveness and view may become obscured. See *Owner's Manual* for additional limitations and details. **46.** The *Bluetooth*[®] word mark and logos are registered trademarks owned by Bluetooth SIG, Inc., and any use of such marks by Toyota is under license. A compatible *Bluetooth*[®]-enabled phone must first be paired. Phone performance depends on software, coverage and carrier. **47.** When the system is on, Electric Parking Brake is designed to engage the Parking Brake under limited conditions. It may not hold the vehicle under all conditions. See *Owner's Manual* for additional limitations and details. **48.** When the system is on, Brake Hold is designed to keep the brakes engaged after the driver brings the vehicle to a complete stop. It may not hold the vehicle under certain conditions and does not function when the vehicle is in Reverse. Brake Hold is not a substitute for safe and attentive driving. See *Owner's Manual* for additional limitations and details. **49.** Rated for 12 volts/10 amps. See *Owner's Manual* for additional limitations and details. **50.** HD Radio[™] Technology manufactured under license from iBiquity Digital Corporation U.S. and Foreign Patents. HD Radio[™] and the HD, HD Radio, and "Arc" logos are proprietary trademarks of iBiquity Digital Corp. **51.** Advanced voice recognition capabilities vary by head unit. **52.** The Safety Connect[®] trial period is at no extra cost and begins on the original date of purchase or lease of a new vehicle. Paid subscription required after trial to access the service. **53.** The Service Connect trial period is at no extra cost and begins on the original date of purchase or lease of a new vehicle. After the respective trial period expires, enrollment in paid subscription is required to access the service. **54.** The Toyota Remote Connect trial period is at no extra cost and begins on the original date of purchase or lease of a new vehicle. Paid subscription required after trial to access the service. Terms of Use apply. **55.** The Wi-Fi Connect trial begins at the time of activation and expires when 2GB of data is used or when the 3-month period ends. After the trial period expires, enrollment in a paid subscription is required to access the service. Terms and conditions apply. **56.** The Destination Assist trial period is at no extra cost and begins on the original date of purchase or lease of a new vehicle. After the trial period expires, enrollment in a paid subscription is required to access the service. **57.** Vehicle Stability Control is an electronic system designed to help the driver maintain vehicle control under adverse conditions. It is not a substitute for safe and attentive driving practices. Factors including speed, road conditions, weather and driver steering input can all affect whether VSC will be effective in preventing a loss of control. See *Owner's Manual* for additional limitations and details. **58.** Brake Assist is designed to help the driver take advantage of ABS and is not a substitute for safe driving practices. Braking effectiveness also depends on proper vehicle maintenance, tire and road conditions. See *Owner's Manual* for additional limitations and details. **59.** Smart Stop Technology[®] operates only in the event of certain contemporaneous brake and accelerator pedal applications. When engaged, the system will reduce power to help the brakes bring the vehicle to a stop. Factors including speed, road conditions and driver input can all impact stopping distance. Smart Stop Technology[®] is not a substitute for safe and attentive driving and does not guarantee instant stopping. See *Owner's Manual* for additional limitations and details. **60.** Building and/or parking structures may limit system effectiveness. Stolen vehicle police report required to use Stolen Vehicle Locator. For additional assistance contact the Toyota Customer Experience Center at 1-800-331-4331. **61.** Hill Start Assist Control is designed to help minimize backward rolling on steep ascents. It is not a substitute for safe driving judgment and practices. Factors including speed, grade, surface conditions and driver input can all affect whether HAC will be effective in preventing a loss of control. See *Owner's Manual* for additional limitations and details. **62.** This device is not a substitute for safe and attentive driving practices. It is the driver's responsibility to maintain a lookout for pedestrians, cyclists, other cars and objects, and to drive the vehicle in a safe and attentive manner to avoid making contact. **63.** The engine immobilizer is a state-of-the-art anti-theft system that is initiated when you insert your key into the ignition switch or bring a Smart Key fob into the vehicle. The engine will only start if the code in the transponder chip inside the key/fob matches the code in the vehicle's immobilizer. The transponder chip is embedded in the key/fob and can be costly to replace. If you lose a key or fob, your Toyota dealer can help or go to www.aloa.org to find a qualified locksmith in your area who can perform high-security key service. **64.** Meets Tier 2/Bin 3 Federal emissions standard. **65.** Dashcam may not record under certain conditions. Always respect the privacy rights of others. See your dashcam *Owner's Manual* for details.

Toyota strives to build vehicles to match customer interest and thus they typically are built with popular options and option packages. Not all options/packages are available separately and some may not be available in all regions of the country. See toyota.com for information about options/packages commonly available in your area. If you would prefer a vehicle without any or with different options, contact your dealer to check for current availability or the possibility of placing a special order.

Color(s) depicted may vary based on multiple factors, including ambient lighting and the format in which it is being viewed (e.g., computer, mobile device or print).

Some vehicles are shown with available equipment. Seatbelts should be worn at all times. For details on vehicle specifications, standard features and available equipment in your area, contact your Toyota dealer. A vehicle with particular equipment may not be available at the dealership. Ask your Toyota dealer to help locate a specifically equipped vehicle.

All information presented herein is based on data available at the time of posting, is subject to change without notice and pertains specifically to mainland U.S.A. vehicles only. Vehicles shown may be prototypes, shown using visual effects and/or shown with options. Actual models may vary.



Mobility

For Toyota Mobility program details, go to www.toyota.com/mobility or call the Toyota Brand Engagement Center at 1-800-331-4331