



Innovation  
that excites

2017  
**JUKE®**

## NISSAN JUKE®

Isn't it time you were passionate about the vehicle you drive? Welcome to the 2017 JUKE.

Follow Nissan Canada on:



Innovation  
that excites

visit [nissan.ca](http://nissan.ca)

Facebook® is a registered trademark of Facebook, Inc. Twitter® is a registered trademark of Twitter, Inc. YouTube® is a registered trademark of Google Inc. Instagram® is a registered trademark of Instagram, LLC.

All illustrations, photographs and specifications in this brochure are based on the latest product information. See actual vehicle for complete accuracy. Nissan Canada Inc. reserves the right to make changes at any time, without notice, in prices, colours, materials, equipment, specifications and models, and to discontinue models or equipment. For information on additional options and accessories, contact your Nissan Dealership. Registered trademarks are property of their respective owners.

At [nissan.ca](http://nissan.ca), you'll find a way to "build your own Nissan," a dealer locator, and more information about key Nissan support services. The Nissan names, logos, product names, feature names, and slogans are trademarks owned by or licensed to Nissan Motor Co. Ltd. and/or its North American subsidiaries. Always wear your seat belt, and please don't drink and drive. Printed in October 2016. Catalogue number: 99999-JUK17EN. ©2016 Nissan Canada Inc. All rights reserved.

**DEALER ePROCESS**





**UNLEASH** your own idea of fun. Ready to stand out? Mix it up with the colours that represent your style. Head to the city with your equally spontaneous crew. Want a change of pace? Cruise up the coast, saving gas with the push of a button. Own the day – no timeline, great tunes, and easily accessible navigation.<sup>1</sup> Drive home as the sun sets, with a smile on your face. The 2017 Nissan JUKE.<sup>®</sup> Revel in **THRILLS**.

Nissan JUKE<sup>®</sup> SL AWD shown in Gun Metallic with Orange Colour Studio accessories.



<sup>1</sup>Never program while driving. GPS mapping may not be detailed in all areas or reflect current road status.



# YOU'LL NEVER LOOK AT JUKE® THE SAME WAY AGAIN

Welcome to **JUKE Colour Studio** – where colour changes everything. Featuring colour-coordinated bumper accents and headlight trim rings, side mirror caps, and vibrant alloy wheel centre caps, along with eight other configurable accents, all ready for your personal touch.

## COLOUR LEGEND



JUKE accent colours:  
Yellow, Orange, Red, Electric Blue,  
Black Purple, Carbon Fibre Look,  
Matte Black, Piano Black<sup>1</sup>, and White

To see more, go to [nissan.ca/jukecolourstudio](http://nissan.ca/jukecolourstudio)



## JUKE Colour Studio

### Headlight Trim Rings

colours available



### Front and Rear Bumper Accents

colours available



### Side Mirror Caps

colours available



### Interior Inserts

colours available



### Door Handle Covers

colours available



### Floor Mats

colours available



### Lower Liftgate Accent

colours available



### Side Door Sills

colours available



### Wheel Centre Caps

colours available



### 17" Alloy Wheels

colours available



### Rear Roof Spoiler

colours available



### Liftgate Handle Finishers

colours available



DEALER ePROCESS

<sup>1</sup>Piano Black colour is only available for interior inserts. <sup>2</sup>Solid Black. <sup>3</sup>Black pockets.



# 188<sub>HP</sub>

## POWER THE ROAD LIKE A PRO

### 1.6-L Direct Injection Gasoline (DIG™) Turbo Engine

If you could design an engine to provide the ideal balance of efficiency and power, this would be it. Turbo boost gives you more than enough passing power when you need it, while the compact engine design and two-level direct injection system deliver fuel-sipping economy when you don't.

### Xtronic CVT® (Continuously Variable Transmission) with Manual Mode

Smooth as silk and fun to drive. Unlike traditional automatic transmissions, JUKE's available Xtronic CVT transmission eliminates the need for gear-hunting and delivers a seamless wave of power. In case you miss the feeling of gears, you can engage Manual mode and bring it right back. Of course, a manual transmission is still available for the die-hard enthusiast.



## NISSAN TORQUE VECTORING ALL-WHEEL DRIVE TAKE ON S-CURVES

Instead of traditional All-Wheel Drive (AWD) systems that only distribute power from front to back, the torque vectoring AWD that's available on JUKE® adjusts power side-to-side to the rear wheels. When cornering, this means the outside rear wheel gets more power, helping you rotate into the curve and accelerate out.

Nissan JUKE® SL AWD shown in Super Black with White Colour Studio accessories.

**DEP**  
DEALER ePROCESS

### Torque Vectoring AWD

In a turn, this multi-sensor system automatically transfers rear-wheel power to the left or right, depending on which needs it more, so any change in direction can be performed smoothly and securely.





## PACK IN THE UNEXPECTED

The roominess inside JUKE® is quite surprising, and much welcomed. Contributing to its space and flexibility is the under-floor storage (FWD models only), allowing for extra space that is out of sight. With the second-row seats up, there is still plenty of space in back for large luggage. Or fold the seats down, and you can create a flat cargo floor.<sup>1</sup>

# 1,017

LITRES OF STORAGE<sup>1</sup>

Flat Cargo Floor<sup>1</sup>

Under-floor Storage  
(FWD models only)<sup>1</sup>

**DEP**  
Nissan JUKE® SL shown in Black/Red Leather  
with Red Centre Console and Door Trim.  
**DEALER ePROCESS**

## NISSAN I-CON SYSTEM

### CHANGE YOUR MOOD ON THE FLY

JUKE's available I-CON system lets you change up your ride with the push of a button. You can also keep stats on your performance and adjust the climate, all while you're out and about.



**Torque It, Boost It, Save It** Drive in Normal mode for the best combination of performance and efficiency. Lock in Sport mode, for a turbocharged performance. Or hit the Eco mode button and get the most out of every drop of fuel. And with a push of the Climate button, I-CON switches displays and now becomes your control centre for all things comfort.

Shown in D-mode Interface



Shown in Climate Interface



<sup>1</sup>Cargo and load capacity limited by weight and distribution. Always secure all cargo. Heavy loading of the vehicle with cargo, especially on the roof, will affect the handling and stability of the vehicle.





## NISSAN AROUND VIEW® MONITOR TAKE ON TIGHT SPACES

**What if parallel parking was easier?** JUKE® has an available Around View Monitor that gives you a virtual 360° bird's-eye view of your vehicle, with selectable split-screen close-ups of the front, rear, and curbside views, so you can get a better look.<sup>1,2</sup> Moving Object Detection (MOD) keeps an eye around your JUKE and can warn you about moving objects detected in your vicinity.<sup>3</sup>

NissanConnect<sup>SM</sup>

## YOUR WORLD AT YOUR FINGERTIPS

NissanConnect with available Navigation and Mobile Apps makes your JUKE become your smartphone's best friend. Which means no more separation anxiety for you. Because now, your own hand-picked music, latest tweets, TripAdvisor® tips, Facebook® events, and more all come along for the ride, working seamlessly together through your smartphone and the 147 mm (5.8") colour touch-screen.<sup>4</sup>

Your Nissan JUKE also keeps you in the loop with available Voice Recognition,<sup>5</sup> hands-free text messaging,<sup>6</sup> Bluetooth® hands-free calling and streaming audio,<sup>7</sup> plus an iPod®/USB input.<sup>8</sup>



DEALER ePRO

<sup>1</sup>Parking aid/convenience feature. Cannot completely eliminate blind spots. May not detect every object and does not warn of moving objects. Always check surroundings and turn to look behind you before moving vehicle. <sup>2</sup>Virtual composite 360° view. <sup>3</sup>MOD cannot completely eliminate blind spots and may not detect every object. MOD operates at vehicle speeds below 8 km/h. Always check surroundings and turn to look behind you before moving vehicle. <sup>4</sup>Driving is serious business. Only use NissanConnect<sup>SM</sup> Mobile Apps when safe to do so. App availability is dependent upon vehicle model, trim level, packaging, and/or options. See [Nissan.ca/NissanConnect](http://Nissan.ca/NissanConnect) for complete app availability details. Never program while driving. GPS mapping may not be detailed in all areas or reflect current road status. Compatible smartphone required. Cellular network and GPS signals not available in all areas and/or at all times. Cellular technology is evolving, and changes to cellular networks provided by independent companies are not within Nissan's control. Nissan is not responsible for associated costs that may be required for continued operation due to cellular network termination (including equipment upgrades, if available, or roaming charges on alternative networks). Should cellular provider terminate/restrict service, service may be terminated without notice and with no liability to Nissan and its agents or affiliates. Subscription Agreement required and terms and conditions of Subscription Agreement apply. See [Nissan.ca/NissanConnect](http://Nissan.ca/NissanConnect) for details. Text rates and/or data usage may apply. <sup>5</sup>Never program while driving. GPS mapping may not be detailed in all areas or reflect current road status. <sup>6</sup>Use the text messaging feature after stopping your vehicle in a safe location. If you have to use the feature while driving, exercise extreme caution at all times so full attention may be given to vehicle operation. Compatible smartphone required. Text rates and/or data usage may apply. <sup>7</sup>Availability of specific features is dependent upon the phone's Bluetooth® support. Please refer to your phone Owner's Manual for details. Bluetooth® word mark and logos are owned by Bluetooth SIG, Inc., and any use of such marks by Nissan is under licence. <sup>8</sup>Driving is serious business and requires your full attention. If you have to use the connected device while driving, exercise extreme caution at all times so full attention may be given to vehicle operation. iPod® is a registered trademark of Apple, Inc. All rights reserved. iPod® or other external device not included. Facebook® is a registered trademark of Facebook, Inc. Google® is a registered trademark of Google Inc. The Sirius® XM®, and SiriusXM® names and all related marks and logos are trademarks of Sirius XM Radio Inc. TripAdvisor® is a registered trademark of TripAdvisor LLC. Twitter® is a registered trademark of Twitter, Inc.



**nismo®**



## DIAL UP THE STYLE

**Step into JUKE® NISMO®** and experience the next-level design born from an illustrious racing heritage. With a NISMO Alcantara® and leather-wrapped steering wheel, smoked front combination lights, and stiffer competition-tuned suspension, you'll experience what so many others already have. It's not just a performance car, it's a NISMO.



U.S. instrumentation shown.



### Interior Upgrades with NISMO Trim

- NISMO red tachometer face
- NISMO sport bucket front seats with embroidered synthetic suede trim and signature red stitching
- NISMO Alcantara® and leather-wrapped steering wheel
- NISMO shift knob
- Smoked grey centre console and door trim
- NISMO carpeted floor mats
- Black headliner
- NISMO centre console badge

### Competition-inspired Design

- LED Daytime Running Lights
- Red side mirror caps
- Body-colour wheel arches
- Red body striping
- Smoked front combination lights
- Modified front fascia with larger grille
- Resculpted side sills
- Unique body-colour liftgate spoiler
- Rear fascia diffuser

### Competition-tuned Handling and Responsiveness

- NISMO-tuned Xtronic CVT® with Manual mode featuring seven programmed 'gears' and paddle shifters (AWD CVT)
- NISMO-tuned suspension with stiffer springs and dampers
- NISMO-tuned vehicle-speed-sensitive electric power steering
- 18" NISMO 10-spoke aluminum-alloy wheels with P225/45R18 summer tires



# NISSAN SAFETY SHIELD PHILOSOPHY

## INNOVATION THAT LOOKS OUT FOR YOU

What if you had the confidence you need for every part of your drive? The Nissan Safety Shield philosophy is a comprehensive approach to safety that guides the engineering and development of every vehicle we make.

### MONITOR

Smart technologies are designed to help monitor conditions. Like a standard rearview camera that helps you see something directly behind you, or a system that helps ensure you're travelling on properly inflated tires.

**Tire Pressure Monitoring System<sup>1</sup>**

**Moving Object Detection<sup>2,3</sup>**



### RESPOND

Whether you need to hit the brakes hard or manoeuvre around an unexpected obstacle, these standard technologies help you respond to a potentially harmful situation.

**Vehicle Dynamic Control (VDC)<sup>4</sup>** helps you maintain your steered path.

**Traction Control System (TCS)** helps reduce wheelspin in low-traction situations.

**Anti-lock Braking System (ABS)** helps you maintain steering control around obstacles while braking heavily.

**Electronic Brake force Distribution (EBD)** sends extra force to the rear brakes when you have additional weight of passengers or cargo in the back.

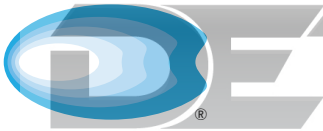
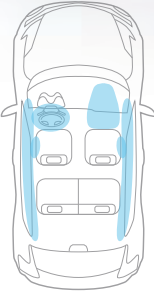
**Brake Assist (BA)<sup>5</sup>** helps apply maximum braking force if it detects hard braking and senses you are in an emergency situation.

### PROTECT

**Six Standard Airbags<sup>6</sup>** Nissan Advanced Airbag System with dual-stage supplemental front airbags with seat belt and occupant-classification sensors<sup>6</sup> help protect your front seat occupants in case of collision. Also featured, front seat-mounted side-impact supplemental airbags<sup>6</sup> and roof-mounted curtain side-impact supplemental airbags<sup>6</sup> help provide head protection for outboard occupants.

**LATCH System (Lower Anchors and Tethers for Children)**


**snuggly kids<sup>®</sup>** Nissan safety engineers have dedicated thousands of hours to evaluating hundreds of child restraints in Nissan vehicles. The result: an industry first, The Snug Kids Child Safety Seat Fit Guide. This guide lists child seats that fit the rear seats of Nissan vehicles, as well as offers invaluable tips on correct installation. Look for the latest Fit Guide at [Nissan.ca/en/owners](http://Nissan.ca/en/owners)



SAFETY SHIELD

### CHOOSE YOUR TRIM LEVEL

SV	
<ul style="list-style-type: none"><li>1.6-litre Direct Injection Gasoline (DIG™) turbo 4-cylinder engine</li><li>Torque vectoring All-Wheel Drive (AWD) or Front-Wheel Drive (FWD)</li><li>6-speed manual transmission or Xtronic CVT™ with Manual mode</li><li>17" 5-split spoke aluminum-alloy wheels</li><li>Hands-free text messaging assistant,<sup>7</sup> and Bluetooth® Hands Free Phone System<sup>8</sup></li><li>Nissan Intelligent Key® with Push Button Ignition</li></ul>	<ul style="list-style-type: none"><li>RearView Monitor<sup>9</sup></li><li>Siri® Eyes Free<sup>10</sup></li><li>Heated front seats</li><li>AM/FM/CD audio system with 127 mm (5.0") colour display with six speakers</li><li>USB connection port for compatible devices<sup>11</sup></li><li>Streaming audio via Bluetooth® wireless technology<sup>8</sup></li><li>Six standard airbags<sup>6</sup></li><li>Vehicle Dynamic Control (VDC)<sup>4</sup> with Traction Control System (TCS)</li></ul>
 	
<b>KEY AVAILABLE PACKAGE:</b> Black Pearl Edition <sup>12</sup>	

SV	JUKE BLACK PEARL EDITION BY COLOUR STUDIO: <sup>12</sup>	Only available in Super Black.
<ul style="list-style-type: none"><li>Exterior mirrors - Pearl White paint</li><li>Exterior door handles - Pearl White paint</li><li>Rear roof spoiler - Pearl White paint</li><li>Front and rear bumper accents - Pearl White paint</li><li>Headlight trim rings - Pearl White paint</li><li>Black Pearl Edition emblem</li><li>17" Aluminum-alloy wheels - Black</li></ul>	<ul style="list-style-type: none"><li>Centre console - White</li><li>Power window switch finishers - White</li><li>Air vent trim rings - White</li><li>Shift knob - White accent</li><li>Steering wheel - White stitching</li><li>Cloth door trim inserts - Black/White cloth</li><li>Cloth seats - Black with White accents and stitching</li></ul>	

SL	INCLUDES SV EQUIPMENT PLUS:
<ul style="list-style-type: none"><li>Standard Xtronic CVT® with Manual mode</li><li>Standard torque vectoring All-Wheel Drive</li><li>Fog lights</li><li>Power sliding glass moonroof with one-touch open/close and tilt feature</li><li>NissanConnect<sup>SM</sup> with Navigation and Mobile Apps, including 147 mm (5.8") colour touch-screen display, and Voice Recognition<sup>13</sup></li></ul>	<ul style="list-style-type: none"><li>SiriusXM® Satellite Radio and SiriusXM® Traffic<sup>14</sup></li><li>Voice Recognition for audio and navigation<sup>15</sup></li><li>Around View® Monitor with Moving Object Detection (MOD)<sup>16</sup></li><li>Leather seating surfaces</li><li>Integrated Control (I-CON) system with drive mode selector</li><li>Automatic Temperature Control (ATC)</li><li>Rockford Fosgate® ecoPUNCH™ audio system with 8.0" subwoofer and amplifier, and six upgraded speakers</li></ul>
	

NISMO®	INCLUDES SV EQUIPMENT PLUS:
<ul style="list-style-type: none"><li>NISMO-tuned Xtronic CVT™ with Manual mode featuring seven programmed 'gears' and paddle shifters</li><li>NISMO-tuned suspension with increased spring and dampening rates</li><li>18" NISMO 10-spoke aluminum-alloy wheels</li><li>LED Daytime Running Lights</li><li>NISMO aerodynamic body kit, rear roof spoiler, fender lip mouldings, and high-gloss B-pillar finish</li><li>NISMO chrome exhaust finisher</li><li>NissanConnect with Navigation and Mobile Apps, including 147 mm (5.8") colour touch-screen display, and Voice Recognition<sup>13</sup></li></ul>	<ul style="list-style-type: none"><li>SiriusXM® Satellite Radio and SiriusXM® Traffic<sup>14</sup></li><li>Voice Recognition for audio and navigation<sup>15</sup></li><li>Around View Monitor with Moving Object Detection (MOD)<sup>16</sup></li><li>Integrated Control (I-CON) system with drive mode selector</li><li>Automatic Temperature Control (ATC)</li><li>NISMO sport bucket front seats</li><li>Rockford Fosgate® ecoPUNCH™ audio system with 8.0" subwoofer and amplifier, and six upgraded speakers</li></ul>
	

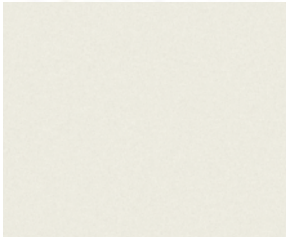
<sup>1</sup>TPMS is not a substitute for regular tire pressure checks. <sup>2</sup>Available feature. <sup>3</sup>MOD cannot completely eliminate blind spots and may not detect every object. MOD operates at vehicle speeds below 8 km/h. Always check surroundings and turn to look behind you before moving vehicle. <sup>4</sup>VDC, which should remain on when driving except when freeing the vehicle from mud or snow, cannot prevent accidents due to abrupt steering, carelessness, or dangerous driving techniques. <sup>5</sup>Brake Assist is only an aid to assist the driver and is not a collision warning or avoidance device. It is the driver's responsibility to be in control of the vehicle at all times. <sup>6</sup>Airbags are only a supplemental restraint system; always wear your seat belt. Even with the occupant-classification sensor, rear-facing child restraints should not be placed in the front-passenger's seat. Also, in addition to any other requirement of applicable law, all children 12 and under should ride in the rear seat properly secured in child restraints, booster seats, or seat belts according to their size. Airbags will only inflate in certain accidents; see your Owner's Manual for details. Inflated airbags shown for illustration purposes only, actual coverage area may differ. Airbags deflate after deployment. <sup>7</sup>Use the text messaging feature after stopping your vehicle in a safe location. If you have to use the feature while driving, exercise extreme caution at all times so full attention may be given to vehicle operation. Compatible smartphone required. Text rates and/or data usage may apply. <sup>8</sup>Availability of specific features is dependent upon the phone's Bluetooth® support. Please refer to your phone Owner's Manual for details. Bluetooth® word mark and logos are owned by Bluetooth SIG, Inc., and any use of such marks by Nissan is under licence. <sup>9</sup>Parking aid/convenience feature. Cannot completely eliminate blind spots. May not detect every object and does not warn of moving objects. Always check surroundings and turn to look behind you before moving vehicle. <sup>10</sup>Driving is serious business and requires your full attention. Only use feature when safe to do so. Compatible smartphone required. Availability of specific feature is dependent upon the phone's Bluetooth® support. Please refer to your phone Owner's Manual for details. Bluetooth® word mark and logos are owned by Bluetooth SIG, Inc. and any use of such marks by Nissan is under licence. See [Nissan.ca](http://Nissan.ca) for details. Text rates and/or data usage may apply. Certain services, including Siri®, are provided by independent companies not within Nissan's control. Should service provider terminate/restrict service, service may be suspended or terminated without notice or liability to Nissan and/or its agents. Nissan not responsible for any equipment replacement or upgrades, or associated costs, that may be required for continued operation due to service changes. Siri® Eyes Free is a registered trademark of Apple, Inc. <sup>11</sup>Driving is serious business and requires your full attention. If you have to use the connected device while driving, exercise extreme caution at all times so full attention may be given to vehicle operation. iPod® is a registered trademark of Apple, Inc. All rights reserved. iPod® or other external device not included. <sup>12</sup>Limited availability. <sup>13</sup>Driving is serious business. Only use NissanConnect<sup>SM</sup> Mobile Apps when safe to do so. App availability is dependent upon vehicle model, trim level, packaging, and/or options. See [Nissan.ca/NissanConnect](http://Nissan.ca/NissanConnect) for complete app availability details. Never program while driving. GPS mapping may not be detailed in all areas or reflect current road status. Compatible smartphone required. Cellular network and GPS signals not available in all areas and/or at all times. Cellular technology is evolving, and changes to cellular networks provided by independent companies are not within Nissan's control. Nissan is not responsible for associated costs that may be required for continued operation due to cellular network termination (including equipment upgrades, if available, or roaming charges on alternative networks). Should cellular provider terminate/restrict service, service may be terminated without notice and without liability to Nissan and its agents or affiliates. Subscription required and terms and conditions of Subscription Agreement apply. See [Nissan.ca/NissanConnect](http://Nissan.ca/NissanConnect) for details. Text rates and/or data usage may apply. <sup>14</sup>XM® and SiriusXM® Satellite Radio is available in the 10 Canadian provinces and the 48 contiguous United States. Basic monthly subscription required and sold separately after trial period. NavTraffic®/SiriusXM® Traffic is available in select North American markets. In Canada, at time of printing, incident and flow data is available for 12 metropolitan areas of Canada (Vancouver, Calgary, Edmonton, Toronto, Ottawa, Montreal, Quebec City, Hamilton, St. Catharines, Kitchener, Guelph, and London). Subscription sold separately after trial period. All subscriptions subject to customer agreement at [siriusxm.ca/terms](http://siriusxm.ca/terms). Fees and programming subject to change. ©2016 Sirius XM Canada Inc. The Sirius®, XM®, and SiriusXM® names and all related marks and logos are trademarks of Sirius XM Radio Inc. All other trademarks are the property of their respective owners. <sup>15</sup>Never program while driving. GPS mapping may not be detailed in all areas or reflect current road status. <sup>16</sup>AVM with MOD cannot completely eliminate blind spots and may not detect every object. MOD operates at vehicle speeds below 8 km/h. Always check surroundings and turn to look behind you before moving vehicle. Alcantara® is a registered trademark of Alcantara S.p.A. Corporation. ecoPUNCH™ is a trademark of Rockford Fosgate. Rockford Fosgate® is a registered trademark of Rockford Corporation.



PAINT AND FABRIC



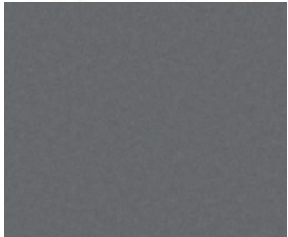
Silver Metallic Centre Console and Door Trim    Red Centre Console and Door Trim    Smoked Grey Centre Console and Door Trim



Pearl White<sup>1</sup> QAB



Solar Yellow<sup>1</sup> EAV



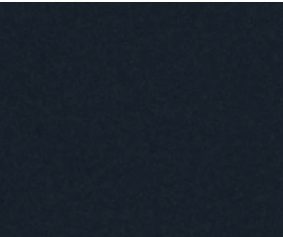
Gun Metallic<sup>1</sup> KAD



Cosmic Blue<sup>1</sup> RBR



Cayenne Red<sup>1</sup> NAH



Super Black KH3

	SV	SL	NISMO®
PREMIUM BLACK CLOTH W/ SILVER TRIM	■		
PREMIUM BLACK/RED CLOTH W/ RED TRIM			
BLACK/RED LEATHER W/ SILVER TRIM		■	
BLACK/RED LEATHER W/ RED TRIM		■	
NISMO BLACK/RED CLOTH W/ SMOKED GREY TRIM			■

SV	SL	NISMO®
	■	

SV	SL	NISMO®
■		
	■	

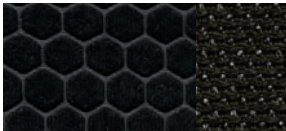
SV	SL	NISMO®
■		
	■	

SV	SL	NISMO®
■		
	■	

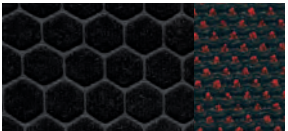
SV	SL	NISMO®
■		
	■	
		■

Nissan has taken care to ensure that the colour swatches presented here are the closest possible representations of actual vehicle colours. Swatches may vary slightly due to the printing process and whether viewed in daylight, fluorescent or incandescent light. Please see the actual colours at your local Nissan dealer.

■ Standard    <sup>1</sup>Extra cost option.



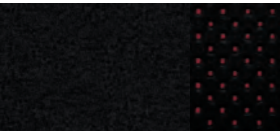
Premium Black Cloth | SV



Premium Black/Red Cloth | SV



Black/Red Leather | SL



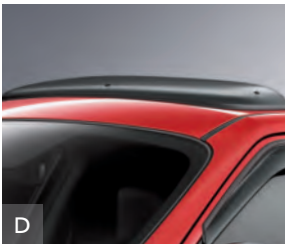
Black/Red Cloth | NISMO®

GENUINE NISSAN ACCESSORIES

Every Genuine Nissan Accessory is: custom-fit, custom-designed and durability-tested; available for finance and backed by Nissan's 3 year/60,000 km Accessories limited warranty when installed by dealer at time of your vehicle purchase.<sup>2</sup>

- A. **17" 5-Split Spoke Alloy Wheel**  
Attitude at all four corners.
- B. **Rear Roof Spoiler**  
Cheat the wind, add some style.
- C. **Cargo Area Protector**<sup>3</sup>  
Use your cargo area, don't abuse it.
- D. **Moonroof Wind Deflector**  
Don't let wind noise interrupt your ride.

- Additional Accessories:
- Mirror Caps
  - Door Handle Covers
  - Headlamp Finishers
  - Hatch Finishers
  - Armrest
  - Chrome Body Side Mouldings
  - Chrome Door Handle Accents
  - Interior Accent Lighting
  - Illuminated Kick Plates
  - All-season Floor Mats
  - Carpeted Cargo Mat
  - And More



See your Nissan dealer for details, or go to [accessories.nissan.ca](http://accessories.nissan.ca)



BUYING AND OWNING

**Finance Options** Through Nissan Canada Finance, we offer many attractive lease and loan options that can be tailored to your individual needs. We have unique programs such as the Nissan Grad Program, Loyalty Program or the Nissan Advantage Program. Please visit our website [Nissan.ca/finance](http://Nissan.ca/finance) to explore all of the options available. We have also made it easy to pre-qualify online. All of our programs come with competitive rates and terms. With our flexible options, driving home a new Nissan has never been easier. Consult your local Nissan Dealership for complete details.

**No-Nonsense Warranty** Every 2017 Nissan is covered by a 3 year/60,000 km<sup>4</sup> Comprehensive New Vehicle Warranty, a 5 year/100,000 km<sup>4</sup> Powertrain Warranty, an 8 year/130,000 km<sup>4</sup> Emission Control Warranty on selected components, and a 5 year/unlimited km Corrosion Perforation Warranty. As a Nissan owner, you'll also receive a 3 year Roadside Assistance program available to you 24 hours a day. Terms, conditions and exclusions apply. See your Warranty Information Booklet for complete details.

<sup>2</sup>See your Nissan Dealership and read the actual limited warranty. <sup>3</sup>Cargo and load capacity limited by weight and distribution. Always secure all cargo. Heavy loading of the vehicle with cargo, especially on the roof, will affect the handling and stability of the vehicle. <sup>4</sup>Whichever occurs first.

**Added Security Plan (ASP)** For ultimate peace of mind, consider the Nissan Added Security Plan. It's our commitment to be there for you, and to help you leave your worries behind. Different plans, available for both purchased and leased vehicles, let you tailor the coverage to your driving habits.

**Security+Plus™ Prepaid Maintenance Plan** The smart choice when it comes to maintaining your new Nissan. Honoured at all participating Nissan Dealers in Canada and the U.S., your vehicle is cared for by factory-trained technicians using Genuine Nissan Parts. And best of all, there's no worrying about price increases on parts or service in the future. A variety of plans are available. Ask your Dealer for details.



Nissan's environmental action plan focuses on several key areas. In addition to increasing production of Zero Emission vehicles like the 100% electric LEAF,<sup>®</sup> we're improving fuel efficiency across our lineup, and reducing the environmental impact of manufacturing through energy-efficient practices in our plants.





SPECIFICATIONS

Engine	SV	SL	NISMO®
MR16DDT – 1.6-litre Direct Injection Gasoline (DIG™) DOHC 16-valve turbocharged 4-cylinder engine	■	■	■
__Horsepower – 188 HP @ 5600 rpm			
__Torque – 177 lb.-ft. @ 1600-5200 rpm			
Emissions – Tier 2, Bin 5	■	■	■
Continuously Variable Valve Timing Control System (CVTCS) on intake and exhaust valves	■	■	■
Nissan Direct Ignition System with double-tipped iridium spark plugs	■	■	■
Electronic drive-by-wire throttle	■	■	■
Engine block heater	■	■	■

Drivetrain			
Front-Wheel Drive (FWD)	■		
Torque vectoring All-Wheel Drive (AWD) – CVT only	□	■	■
6-speed manual transmission (FWD)	■		
Xtronic CVT® (Continuously Variable Transmission) with Manual mode (includes paddle shifters on NISMO)	□	■	■

Brakes			
11.7" Front vented disc/11.5" rear disc brakes	■	■	■
4-wheel Anti-lock Braking System (ABS)	■	■	■
Electronic Brake force Distribution (EBD)	■	■	■
Brake Assist (BA)	■	■	■

Suspension/Steering			
Independent strut front suspension	■	■	■
Torsion beam rear suspension (FWD)	■		
Multi-link independent rear suspension (AWD)		■	■
Front and rear stabilizer bars	■	■	■
Vehicle-speed-sensitive electric power steering	■	■	
NISMO-tuned vehicle-speed-sensitive electric power steering			■
NISMO-tuned suspension with increased spring and dampening rates			■

Wheels/Tires			
17" x 7" 5-split spoke aluminum-alloy wheels	■	■	
18" x 7" NISMO 10-spoke aluminum-alloy wheels			■
P215/55R17 all-season tires	■	■	
P225/45R18 summer tires			■

Exterior Features			
Projector halogen low beam headlights	■	■	■
Smoked front combination lights			■
LED Daytime Running Lights			■
Fog lights		■	
NISMO front grille			■
NISMO aerodynamic body kit – front and rear fascias, side sills and rear roof spoiler			■
Body-colour fender lip mouldings			■
High-gloss B-pillar finish			■
Dual power heated outside mirrors	■	■	■
NISMO red side mirror caps			■
NISMO chrome exhaust finisher (100 mm)			■
Rear privacy glass	■	■	■
Power sliding glass moonroof with one-touch open/close and tilt feature		■	
NISMO badging			■

■ Standard □ Optional

Comfort/Convenience	SV	SL	NISMO®
NissanConnectSM with Navigation and Mobile Apps, including 147 mm (5.8") colour touch-screen display, and Voice Recognition¹		■	■
Voice Recognition for audio and navigation		■	■
SiriusXM® Traffic²		■	■
Hands-free text messaging assistant	■	■	■
Bluetooth® Hands Free Phone System³	■	■	■
Siri® Eyes Free⁴	■	■	■
RearView Monitor	■	■	■
Around View® Monitor with Moving Object Detection (MOD)		■	■
Drive computer with outside temperature display	■	■	■
NISMO red tachometer face			■
Integrated Control (I-CON) system with drive mode selector		■	■
Air conditioning	■	■	■
Automatic Temperature Control (ATC)		■	■
In-cabin microfilter	■	■	■
Cruise control with illuminated steering wheel-mounted controls	■	■	■
Power windows with driver’s window one-touch auto-up/down	■	■	■
Power door locks with auto-locking feature	■	■	■
Nissan Intelligent Key® with Push Button Ignition	■	■	■
Tilt steering column	■	■	■
Variable intermittent windshield wipers	■	■	■
Intermittent rear wiper	■	■	■
Retractable cargo cover		■	■
Height-adjustable front seat belts	■	■	■
Sun visors with vanity mirrors and extensions	■	■	■
Front map lights	■	■	■
12-volt DC power outlet	■	■	■
Cup holders (two front) and bottle holders (two rear)	■	■	■
Cargo area under-floor storage (FWD)	■		

Seating/Appointments			
6-way manual driver’s seat	■	■	■
4-way manual front-passenger's seat	■	■	■
NISMO sport bucket front seats			■
Premium cloth seat trim	■		
Leather seating surfaces		■	
NISMO embroidered synthetic suede seat trim			■
NISMO signature red stitching			■
Heated front seats	■	■	
60/40 Split fold-down rear seats	■	■	■
Front passenger seatback pocket	■	■	■
Leather-wrapped steering wheel	■	■	
NISMO Alcantara® and leather-wrapped steering wheel			■
Leather-wrapped shift knob			■
NISMO shift knob		■	
Painted centre console and door trim accents	■	■	■
Carpeted floor mats	■	■	
NISMO carpeted floor mats			■
Black headliner			■
NISMO centre console badge			■

Audio/Entertainment	SV	SL	NISMO®
AM/FM/CD audio system with 127 mm (5.0") colour display	■		
Rockford Fosgate® ecoPUNCH™ audio system with 8.0" subwoofer and amplifier		■	■
SiriusXM® Satellite Radio²		■	■
Streaming audio via Bluetooth® wireless technology³	■	■	■
USB connection port for iPod® interface and other compatible devices	■	■	■
Auxiliary audio input jack	■	■	■
Six speakers	■		
Six upgraded speakers		■	■
MP3/WMA CD playback capability	■	■	■
Radio Data System (RDS)	■	■	■
Speed-sensitive volume control	■	■	■
Illuminated steering wheel-mounted audio controls	■	■	■

Safety/Security			
Nissan Advanced Airbag System with dual-stage supplemental front airbags with seat belt sensors and occupant-classification sensor	■	■	■
Driver and front-passenger seat-mounted side-impact supplemental airbags	■	■	■
Roof-mounted curtain side-impact supplemental airbags for front- and rear-seat outboard occupant head protection	■	■	■
Vehicle Dynamic Control (VDC) with Traction Control System (TCS)	■	■	■
3-point ALR/ELR passenger seat belt system (ELR for driver)	■	■	■
Front seat belts with pre-tensioners and load limiters	■	■	■
Front-seat Active Head Restraints	■	■	■
LATCH System (Lower Anchors and Tethers for Children)	■	■	■
Energy-absorbing steering column	■	■	■
High-strength steel side-door guard beams	■	■	■
Zone Body construction with front and rear crumple zones	■	■	■
Hood-buckling creases	■	■	■
Tire Pressure Monitoring System (TPMS)	■	■	■
Nissan Vehicle Immobilizer System	■	■	■
Vehicle Security System	■	■	■

<sup>1</sup>Driving is serious business. Only use NissanConnectSM Mobile Apps when safe to do so. App availability is dependent upon vehicle model, trim level, packaging, and/or options. See [Nissan.ca/NissanConnect](#) for complete app availability details. Never program while driving. GPS mapping may not be detailed in all areas or reflect current road status. Compatible smartphone required. Cellular network and GPS signals not available in all areas and/or at all times. Cellular technology is evolving, and changes to cellular networks provided by independent companies are not within Nissan's control. Nissan is not responsible for associated costs that may be required for continued operation due to cellular network termination (including equipment upgrades, if available, or roaming charges on alternative networks). Should cellular provider terminate/restrict service, service may be terminated without notice and with no liability to Nissan and its agents or affiliates. Subscription Agreement required and terms and conditions of Subscription Agreement apply. See [Nissan.ca/NissanConnect](#) for details. Text rates and/or data usage may apply.

<sup>2</sup>XM® and SiriusXM® Satellite Radio is available in the 10 Canadian provinces and the 48 contiguous United States. Basic monthly subscription required and sold separately after trial period. NavTraffic/SiriusXM® Traffic is available in select North American markets. In Canada, at time of printing, incident and flow data is available for 12 metropolitan areas of Canada (Vancouver, Calgary, Edmonton, Toronto, Ottawa, Montreal, Quebec City, Hamilton, St. Catharines, Kitchener, Guelph, and London). Subscription sold separately after trial period. All subscriptions subject to customer agreement at [siriusxm.ca/terms](#). Fees and programming subject to change. ©2016 Sirius XM Canada Inc. The Sirius,® XM,® and SiriusXM® names and all related marks and logos are trademarks of Sirius XM Radio Inc. All other trademarks are the property of their respective owners. <sup>3</sup>Availability of specific features is dependent upon the phone's Bluetooth® support. Please refer to your phone Owner's Manual for details. Bluetooth® word mark and logos are owned by Bluetooth SIG, Inc., and any use of such marks by Nissan is under licence. <sup>4</sup>Driving is serious business and requires your full attention. Only use feature when safe to do so. Compatible smartphone required. Availability of specific feature is dependent upon the phone's Bluetooth® support. Please refer to your phone Owner's Manual for details. Bluetooth® word mark and logos are owned by Bluetooth SIG, Inc. and any use of such marks by Nissan is under licence. See [Nissan.ca](#) for details. Text rates and/or data usage may apply. Certain services, including Siri,® are provided by independent companies not within Nissan's control. Should service provider terminate/restrict service, service may be suspended or terminated without notice or liability to Nissan and/or its agents. Nissan not responsible for any equipment replacement or upgrades, or associated costs, that may be required for continued operation due to service changes. Siri® Eyes Free is a registered trademark of Apple, Inc. <sup>5</sup>Limited availability. Alcantara® is a registered trademark of Alcantara S.p.A. Corporation. iPod® is a registered trademark of Apple, Inc. All rights reserved. iPod® or other external device not included. ecoPUNCH™ is a trademark of Rockford Corporation. Rockford Fosgate® is a registered trademark of Rockford Corporation.

PACKAGE

📦 JUKE® Black Pearl Edition By Colour Studio Package\*

- Pearl White side mirror covers
- Pearl White door handle covers
- Pearl White rear roof spoiler
- Pearl White headlight trim rings
- Pearl White front/rear bumper accents
- 17" Black aluminum-alloy wheels
- White centre console
- White accented shift knob
- White air vent trim rings
- White stitching steering wheel
- White power window switch finishers
- White door trim inserts
- Cloth seats with white accents and stitching

DIMENSIONS/CAPACITIES

Dimensions – mm (inches)			
Exterior			
Wheelbase		2530 (99.6)	
Overall length		4125 (162.4) (SV, SL) 4160 (163.8) (NISMO)	
Overall width		1765 (69.5) (SV, SL) 1770 (69.7) (NISMO)	
Overall height		1570 (61.8)	
Track width (front/rear) – FWD		1525/1525 (60.0/60.0)	
Track width (front/rear) – AWD		1525/1505 (60.0/59.3)	
Interior (front/rear)			
Head room without moonroof		1007/933 (39.6/36.7)	
With moonroof		980/933 (38.6/36.7)	
Leg room	1068/815 (42.1/32.1)	Hip room	1308/1229 (51.5/48.4)
Shoulder room	1361/1305 (53.6/51.4)	Step-in height	423/435 (16.7/17.1)
Cargo			
Length		675 (26.6)	
Width		1409 (55.5)	
Height		681 (26.8)	
Capacities			
Seating capacity		5	
Interior passenger volume – L (cu. ft.)		2418 (85.4)	
Cargo volume – L (cu. ft.)			
With rear seat up		297 (10.5)	
With rear seat down		1017 (35.9)	
Fuel tank – L (Imp gal) – FWD/AWD		50.0 (11.0)/45.0 (9.9)	

Curb Weights – kg (lbs.)			
<b>FWD</b>	<b>SV</b>	<b>SL</b>	<b>NISMO</b>
Manual transmission	1321 (2913)	–	–
Xtronic CVT	1353 (2983)	–	–
<b>AWD</b>			
Xtronic CVT	1436 (3166)	1460 (3219)	1444 (3184)
2017 Fuel Consumption Estimates – L/100 km (MPG)			
<b>City/Hwy</b>	<b>SV</b>	<b>SL</b>	<b>NISMO</b>
<b>FWD</b>			
Manual transmission	8.6 (33)/7.2 (39)	–	–
Xtronic CVT	8.5 (33)/7.5 (38)	–	–
<b>AWD</b>			
Xtronic CVT	9.0 (31)/7.8 (36)	9.0 (31)/7.8 (36)	9.0 (31)/7.8 (36)

\* Actual mileage may vary with driving conditions – use for comparison only.

