

HOW TO NAVIGATE

TO TURN THE PAGES

TOUCH/CLICK THE ARROWS ON EITHER SIDE OF THE BROCHURE

TABLE OF CONTENTS

TOUCH/CLICK THE TABLE OF CONTENTS BUTTON IN THE TOP NAVIGATION BAR OF THE SCREEN TO ADVANCE TO SPECIFIC AREAS OF INTEREST

VIDEO COMPONENTS

TO PLAY VIDEO EMBEDDED WITHIN THE BROCHURE A LIVE INTERNET CONNECTION IS REQUIRED

RENEGADE®

2016



Jeep®

AUTHENTICITY

PASSION



ADVENTURE. *It manifests any number of ways. Wanderlust. A longing to learn. An appreciation for living in the moment with a simple curiosity for what lies beyond the next turn. Here's to making the most of the next 75 adventurous years.*

ADVENTURE

FREEDOM

SINCE 1941



CELEBRATING

75
YEARS

— of the —

GO ANYWHERE,
DO ANYTHING®

SPIRIT

JEEP® ACTIVE DRIVE WITH CLASS-EXCLUSIVE¹* REAR AXLE DISCONNECT
(4x4 MODELS ONLY) / JEEP ACTIVE DRIVE LOW WITH 20:1 CRAWL RATIO[†] /
HILL DESCENT CONTROL[†] / HILL START ASSIST / SELEC-TERRAIN® TRACTION
MANAGEMENT SYSTEM[†] / SKID PLATES[†] / TOW HOOKS[†] / TRAIL RATED[®]
CAPABILITY[†] / HEIGHT-ADJUSTABLE CARGO FLOOR[†] / 40/20/40 SPLIT-
FOLDING REAR SEAT[†] / FOLD FORWARD FRONT-PASSENGER SEAT /
INDUSTRY-EXCLUSIVE AVAILABLE MY SKY® OPEN-AIR ROOF SYSTEM[†] /
CLASS-EXCLUSIVE[†] AVAILABLE 9-SPEED AUTOMATIC TRANSMISSION[†] / 1.4L MULTIAIR®
TURBOENGINE / 2.4L TIGER SHARK® ENGINE[†] / BEST-IN-CLASS² TOWING CAPACITY[†] /
BEST-IN-CLASS¹ 1ST- AND 2ND-ROW HEAD ROOM / HEATED STEERING
WHEEL[†] / HEATED FRONT SEATS[†] / DUAL-ZONE AUTOMATIC CLIMATE
CONTROL[†] / KEYLESS ENTER 'N GO™[†] / REMOTE START[†] / POWER, HEATED
SIDEVIEW MIRRORS[†] / WINDSHIELD WIPER DE-ICER[†] / RAIN-SENSING
WINDSHIELD WIPERS[†] / 7-INCH FULL-COLOR DRIVER INFORMATION
DISPLAY (DID)[†] / BEATS AUDIO™ PREMIUM 9-SPEAKER SOUND SYSTEM WITH
506 WATTS[†] / 6.5-INCH TOUCHSCREEN[†] / UP TO 70 AVAILABLE SAFETY &
SECURITY FEATURES / UCONNECT® HANDS-FREE³ COMMUNICATION[†] /
7 STANDARD AIR BAGS⁴ / ELECTRONIC STABILITY CONTROL (ESC)⁵ /
ELECTRONIC ROLL MITIGATION (ERM) / TRAILER SWAY CONTROL (TSC)⁵ /
UCONNECT ACCESS⁶ WITH 9-1-1 CALL⁷ AND ROADSIDE ASSISTANCE CALL⁸ /
PARKVIEW® REAR BACK-UP CAMERA⁹ / BLIND SPOT MONITORING (BSM)¹⁰ AND
REAR CROSS-PATH DETECTION⁹ / LANESENSE® LANE DEPARTURE WARNING
WITH LANE KEEP ASSIST (LDW+)¹¹ / FULL-SPEED FORWARD COLLISION
WARNING WITH ACTIVE BRAKING (FSFCW+)¹² / PARKSENSE® REAR PARK
ASSIST / PREMIUM TIRE PRESSURE MONITORING SYSTEM (TPMS)

*A note about this brochure: all disclaimers and disclosures can be found on the back cover. †Available.



BUILD & PRICE



FIND A DEALER

EXPLORE WITH PURPOSE.
Find something more.



Trailhawk® in Anvil

THE MOST CAPABLE¹³ SMALL SUV EVER.



Freedom riders with fuel-efficient sensibilities can have it all, thanks to the available Jeep® Active Drive 4x4 systems. Take on tough trails and icy roads alike in four-wheel drive, then actively transition to an efficient front-wheel drive by putting the system's Selec-Terrain™ dial in Auto mode. Get in and get going.



*Best-in-class¹⁴
available
4x4
CAPABILITY*

*Best-in-class²
available
TOWING
CAPACITY*

*Class-Exclusive¹
available
9-SPEED AUTOMATIC
TRANSMISSION*



ROOM TO BRING IT ON. This spacious interior volume (118.6 cu. ft.) lets you accommodate all the things you need to make every trip all-inclusive, including gear, people and pets. The available 40/20/40 split-folding rear seat with pass-through can be configured to fit life's necessities and extras.

EFFICIENT, RESPONSIVE AND SMOOTH. That's how you describe Renegade's class-exclusive¹ available 9-speed automatic transmission. Economies are maximized and performance is always optimal. Matched to the powerful 2.4L Tigershark[®] engine, quick takeoffs and a consistently refined performance are assured.

LIGHT UP THE CORNERS. Class-exclusive¹ available cornering front fog lamps send more illumination into the area that you're turning toward, exposing curbs, potential potholes, ice patches and other driving hazards. Turn the steering wheel or activate the turn signal and the corresponding fog lamp automatically goes on, helping drivers to safely navigate dark corners.

*THERE'S AN ADVENTURE
AROUND EVERY TURN WHEN YOU
LIVE THE LIFE OF A RENEGADE.[®]*



FIND THE
PATH TO YOUR
DREAMS,
FULFILLED.



*It's about going the distance, without losing ground.
It's about seeking what you find, and finding
something more. Redefine convention. Drive to
the beat of your own drum with Renegade.®*

Trailhawk® with leather-trimmed interior in Black

PLENTY OF HEAD ROOM. This roomy interior gives everyone plenty of personal space, including best-in-class* first- and second-row headroom. It's the opposite of feeling cramped and quartered, like you do in other smaller vehicles. Rear-seat passengers can let their feet breathe and stretch, thanks to the wide track of the front seats.

DUAL-ZONE AUTOMATIC CLIMATE CONTROL. Air vents are positioned to send streams of warmth, or air conditioned comfort, toward the driver and front passenger, and can be set at two different temps. When the front row is all good, then everyone is all good. Available.

CUSHIONED WHERE IT COUNTS. Standard premium cloth or available leather-trimmed seats are contoured and cushioned for cruising, and accented with eye-catching contrast stitching. Upgrade to the available eight-way power-adjustable driver seat with four-way lumbar adjustment, and enjoy top-notch bottom-line comfort. Additional options available.



JEEP ACTIVE DRIVE 4x4. This authentic, available Jeep® brand-engineered system features a rear axle disconnect function that seamlessly switches between two- and four-wheel drive, helping Renegade® achieve remarkable fuel efficiencies. In challenging situations, Active Drive can keep you moving forward, even when just one wheel has traction. When this occurs, the system automatically and seamlessly adjusts to thrust up to 100% of the engine's available power and torque to the wheel(s) that need it most. This allows Renegade to really grab on and keep you moving forward.



JEEP ACTIVE DRIVE LOW. Delivers best-in-class¹⁴ 4x4 capability, with Hill Descent Control that helps ensure safe downhill travel. Jeep brand engineering puts you in charge of a 20:1 crawl ratio that can overcome virtually any obstacle. Available exclusively on Renegade Trailhawk®.

TWO ENGINE OPTIONS. The available 2.4L Tigershark® I-4 delivers impressive power and torque while lowering fuel consumption and emissions. The standard 1.4L MultiAir® Turbo puts power, performance and efficiency to work. Both engines deliver an efficient 31 hwy mpg.*





TRAILHAWK.®

Renegade® Trailhawk® arrives with everything you need to test your will against Mother Nature's — and win. Every Trailhawk proudly wears a Trail Rated® badge indicating it has been tested to perform masterfully in five categories. You're fully prepared to reach brand-new heart-pounding heights.



Trailhawk® in Glacier Metallic

TRAIL RATED TEST CATEGORIES



TRACTION



Trail Rated traction helps you maintain controlled forward motion on snowy back roads and over icy urban bridges. Others may fear untamed terrain, but your Trail Rated Renegade has the traction within to master all kinds of topography and driving conditions.



WATER FORDING¹⁵



Traverse that stream with confidence, thanks to additional electrical and body seals, plus a high air-intake location. Renegade has the capability to safely manage in up to 19 inches of water.¹⁵ Always inspect all waterways before proceeding, just to make sure there are no unforeseen pitfalls.



MANEUVERABILITY



Renegade Trailhawk is born with the athletic ability to navigate narrow gaps or handle emergency situations while maintaining its integrity on the trails. Precision steering, a tight turning radius and an optimized wheelbase allow for expert maneuvering between and around virtually all obstacles.



ARTICULATION



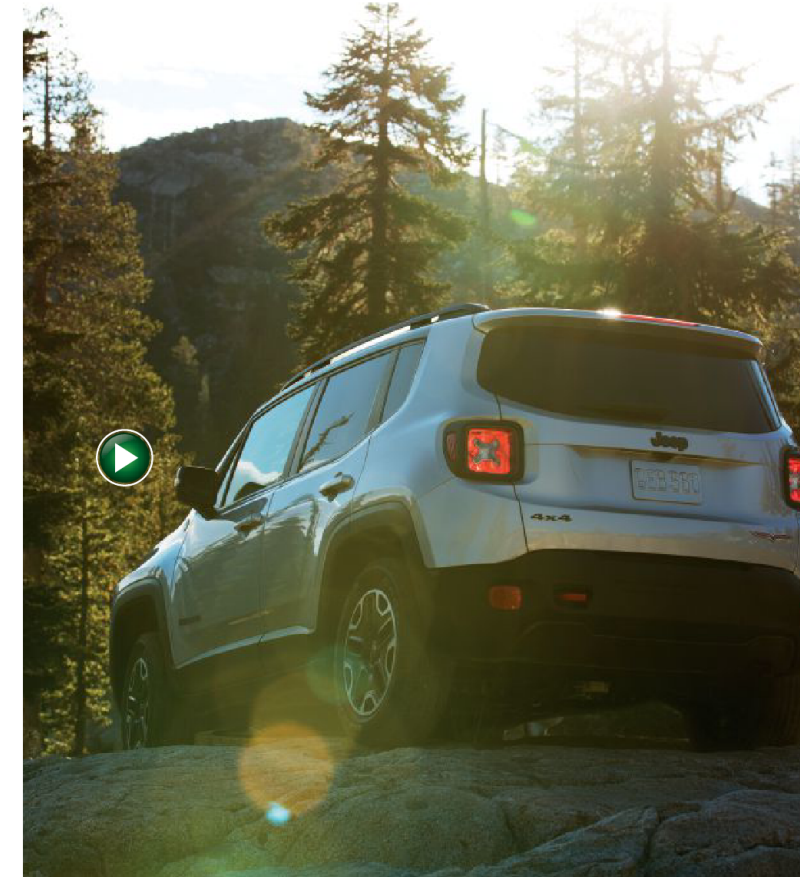
Renegade's suspension systems enhance on- and off-road performance by maximizing flexibility, axle articulation and wheel travel. This standard indicates that when one or more wheels are elevated, the Jeep® 4x4 system helps the others stay on the ground longer to keep you moving.



GROUND CLEARANCE



Head out knowing that your Trail Rated Renegade has enhanced ground clearance along with optimized approach, departure and breakover angles designed to clear logs, rocks and uneven ground. Your undercarriage is protected, too, with forged skid plates that cover your vehicle's most valuable underbody elements.



See life from a new perspective.

Appreciate what lies in the rearview mirror.

Purposefully take the long way home. For those who yearn for the sky, when you live the #JeepLife, you'll find so much more than the sun.



MY SKY.®

Industry-exclusive
Available
Open-Air
Roof System.

Renegade® expands your world with open-air freedom, like only an authentic Jeep vehicle can. Option My Sky,® and its two roof panels are easily removed and stored on top of the height-adjustable rear cargo floor. Choose from two options: power retractable and manual removable¹⁶ or manual removable¹⁶. Power retractable opens the front My Sky panel with the push of a button; manually removable¹⁶ lets you take each 10-lb panel off with your very own hands, easy-peasy for one person to handle.



[LEARN MORE](#)
[JEEP.COM](#)

.....
RUN WILD. RUN FREE.
*Become exactly what
you're meant to be.*
.....

Limited in Granite Crystal Metallic



Trailhawk® in Omaha Orange





PRECISION-TUNED. From rural roads to the most modern highways, Renegade® delivers a ride that's smooth and quiet, with solid road-hugging handling. Integrated KONI® selective damping front and rear strut systems work together to hand over a distinctive, premium driving experience. Standard.

STAY IN YOUR LANE. LaneSense® Lane Departure Warning with Lane Keep Assist (LDW+)¹ monitors your lane position using a camera mounted on the rearview mirror. Should you drift outside your lane, torque is applied to the steering wheel. If the driver continues to drift out of the lane, a message appears on the Driver Information Display (DID). Available.

KEYLESS ENTER 'N GO™ Keep that forward motion intact. Pocket the system's fob and when the traveling bug strikes, climb in your Renegade, depress the brake or clutch pedal, press a button, shift into gear and take off running. Never fumble for keys again. Available.



FOLLOW THE RULES OF A RENEGADE.®

=====

The next detour can take you far.

*No matter what
challenges you face,
keep moving ahead and
stay true to your heart.*

Explore the world with confidence. Move forward with resourceful skill. Enjoy fuel-efficient economies as well as bold capabilities. Relish a smooth car-like ride and a cabin that's chock-full of cubbies, comfort and helpful technologies. Comfortably carry passengers and plenty of cargo with equal ease. These are the rules of a Renegade.®



Limited in Mojave Sand



GET A GRIP. Keep your hands safely on the wheel, thanks to the multifunctional Jeep® brand steering wheel with audio controls and other available features. Go for the heated leather-wrapped option, with buttons at hand for cruising.

TOUCHSCREEN DISPLAY. The available Uconnect® 6.5 NAV Radio shows full-color graphics on a big 6.5-inch touchscreen display. Vivid and fully interactive, with access to various vehicle settings, integrated Voice Command³ and Bluetooth® hands-free³ calling, voice texting¹⁷ plus an available WiFi connection¹⁸ (available through Mopar®) and GPS navigation take you exactly where you want to go.

SOUNDS LIKE. Take the base four-speaker system, or go for an easy upgrade to the available BeatsAudio™ Premium Sound System that carefully places nine speakers throughout the cabin. Sound is amplified with a 506-watt force, and a 6.5-inch subwoofer doing the heavy lifting. Boom boom — they'll hear you before they see you.





YOUR WORLD IS ENRICHED BY GREAT CONNECTIONS.

RENEGADE® BRINGS A RANGE OF COMMUNICATION AND ENTERTAINMENT SERVICES STRAIGHT INTO YOUR VEHICLE, ALL BUNDLED WITHIN A ROBUST UCONNECT® SYSTEM. WITH SO MANY CONVENIENT OPTIONS TO CHOOSE FROM, DISCOVER HOW YOU WOULD LIKE TO CONNECT AT DRIVEUCONNECT.COM

DISCOVER NEW PLACES*

Find the best shopping, dancing, entertainment venues and restaurants. Available.

NAVIGATE TO ADVENTURE

Get turn-by-turn directions so you don't get lost along the way (unless you want to). Available.

ASSISTED IN EMERGENCIES

Reach 9-1-1² operators and Roadside Assistance[®] with the touch of a button. Available.

SEE INTO THE FUTURE

Hear weather and traffic reports with a five-year trial subscription to SiriusXM Travel Link¹⁰ and SiriusXM Traffic!¹⁰ Available.

LISTEN TO MUSIC AND SPORTS

Access a variety of genres, and save your favorite artists and songs with SiriusXM[®] Satellite Radio!¹⁰ One-year All Access!¹⁰ trial subscription included. Available.

START YOUR CAR FROM AFAR

Get your engine running, unlock your door or flash your headlamps from almost anywhere using your phone. Available.

SPEAK UP AND BE HEARD

Send and receive calls and texts!¹¹ while driving safely with hands-free³ phone capability. Available.

DICTATE YOUR REPLY

Stay focused and keep them informed with Voice Text Reply!¹² Available.

HOST A WIFI HOTSPOT¹³

Upload and download, post and search. Uconnect with WiFi!¹⁴ available through Mopar[®], lets you connect your devices to the Web. Available.



SiriusXM[®] All Access!¹⁰ Enjoy commercial-free music, plus your favorite sports, news, talk and entertainment AND listen to your SiriusXM¹⁰ favorites outside your vehicle by streaming your service online and on the app — it's all included in your one-year trial subscription.

Limited in Granite Crystal Metallic

*Available with Uconnect and/or Uconnect Access².



Trailhawk® in Omaha Orange



DESTINATION: EVERYWHERE

Take a closer look at the features you'll love most.
Discover what goes into making the
2016 Jeep® Renegade® everything you need.



2.4L TIGERSHARK® I-4 ENGINE: Acclaimed for its unique and efficient valve-lift system, the Tigershark® incorporates a column of oil flow with precise control of intake valve events. This I-4 burns clean, improves fuel efficiency and reduces emissions with a quiet and refined ride.

HORSEPOWER
180 TORQUE
175 LB-FT



1.4L MULTIAIR® TURBO ENGINE: MultiAir® technology utilizes electrohydraulic valves for more direct control of air and combustion, improving power up to 10 percent*, fuel efficiency up to 10 percent* and torque up to 15 percent*. Emissions, in turn, are cut an impressive 40 percent*.

HORSEPOWER
160 TORQUE
184 LB-FT

FREEDOM IS YOUR GUIDE.

9-SPEED AUTOMATIC TRANSMISSION: An exclusive¹ offering in the small SUV arena, this available automatic transmission operates with precision when it's matched to the 2.4L Tigershark engine. Its fine-tuned 9.79 ratio spread between gears ensures quick takeoffs and consistently refined performance with exceptional efficiencies through all gears at all speeds.

6-SPEED MANUAL TRANSMISSION: Matched with the 1.4L MultiAir Turbo engine, this standard manual transmission is able to transmit high maximum torque values and aids efficiency, moving through shifts with smooth gear transitions. Cabin noise is kept to a minimum.

EFFICIENT FROM ALL ANGLES: Renegade's profile is authentically rugged and athletic. Its unibody frame is comprised of a hybrid mix of lightweight materials, including aluminum, magnesium and high-strength steel, which aids efficiency, while helping to reduce cabin noise and adding a solid measure of safety.



Properly secure all cargo. *Percentages based on averages when compared to "non-MultiAir"-equipped engines.

PULL A TON OF TOYS: Outfit Renegade® with the optional Trailer Tow Group and own bragging rights to 2,000-lb best-in-class² towing capacity. You'll get a Class III hitch receiver and a 4-pin wiring harness (requires 2.4L engine). It's a must-have option for everyone who's got the stuff that makes doing stuff a lot more fun.



TRAIL RATED®: A CURRENCY OF CAPABILITY: Every Jeep® vehicle bearing a Trail Rated® badge is designed and built to Go Anywhere, Do Anything® and perform with exceptional 4WD capability. Each must successfully pass five performance categories: Traction, Articulation, Maneuverability, Ground Clearance and Water Fording!¹⁵

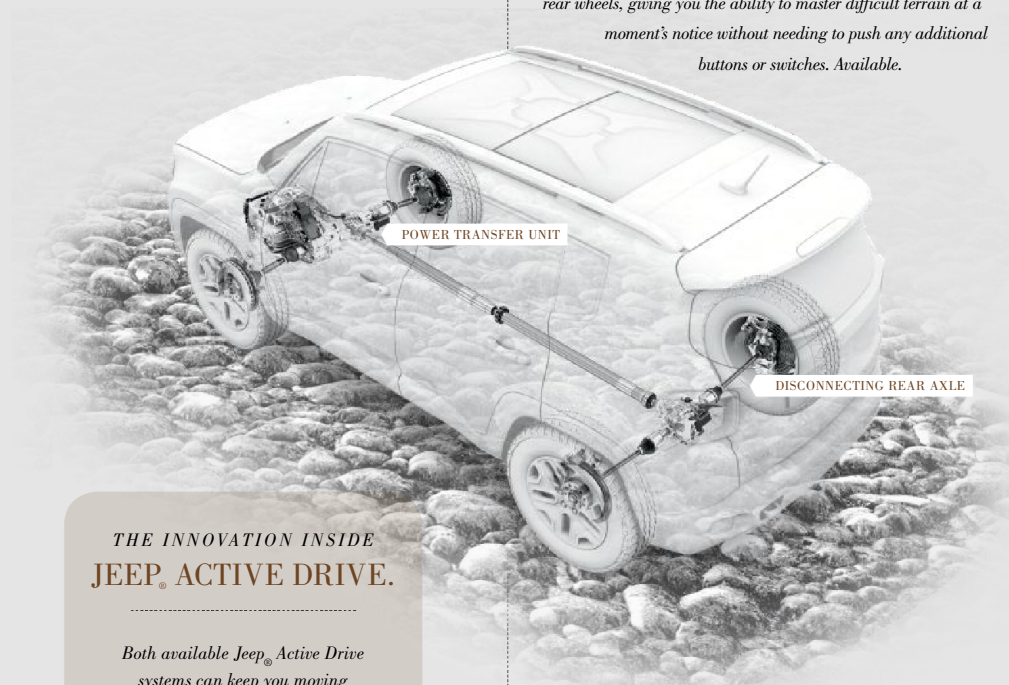


HILL DESCENT CONTROL: Monitors throttle, speed and braking when gravity's pull wants to take over. Brakes are automatically applied for a safe and smooth descent. Exclusive on Trailhawk®.

HILL START ASSIST: Helps avoid rollback when starting on steep inclines by keeping the brakes applied, giving you time to transfer your foot to the gas pedal. Standard.



DISCOVERY BEGINS HERE.



THE INNOVATION INSIDE JEEP® ACTIVE DRIVE.

Both available Jeep® Active Drive systems can keep you moving forward, even when just one wheel has traction. When this occurs, each system will automatically and seamlessly adjust to thrust a portion of the engine's power to the wheel (or wheels) with ground contact. This allows Renegade® to really grab on and keep you moving forward.

JEEP ACTIVE DRIVE: This fully automatic 4WD system features a single-speed power transfer unit (PTU) that combines authentic Jeep-engineered capability with welcome efficiencies. It can seamlessly move into FWD from 4WD, and out of 4WD at any speed, thanks to the system's rear axle disconnect that operates in tandem with Renegade's available Selec-Terrain® Traction Management System's Auto mode. Under normal driving conditions, the front wheels provide most of the traction. If the front wheels begin to lose traction, power is shifted automatically to the rear wheels, giving you the ability to master difficult terrain at a moment's notice without needing to push any additional buttons or switches. Available.

JEEP ACTIVE DRIVE LOW: Get tough on the ridges and rocks with Jeep Active Drive Low, a one-speed system featuring Hill Descent Control. Its gnarly low range delivers a Trail Rated® 20:1 crawl ratio. Exclusively on Trailhawk®.



SELEC-TERRAIN® TRACTION MANAGEMENT SYSTEM.

Every Renegade equipped with an available 4x4 system has a Jeep Selec-Terrain system, offering up to five settings of ultimate driving stability by coordinating various vehicle systems, including throttle, transmission, PTU, traction control and Electronic Stability Control (ESC).⁵

AUTO: In this mode, Selec-Terrain does all the work, automatically adjusting vehicle dynamics to best suit the road. To help ensure optimal efficiency, the rear driveline disengages when not needed.

SNOW: Adjusts for ultimate performance over snow- and ice-covered roads by maximizing vehicle stability and minimizing oversteer. Major systems auto-engaged and managed in this mode include antilock brakes and traction control.

SAND: The system converts to a uniquely calibrated Sand mode that utilizes aggressive throttle and upshift points to tackle looser, sand-covered surfaces.

MUD: Maximizes low-speed traction by allowing additional wheel-slip via specifically tuned chassis controls, differentials and transmission ratios that are geared to successfully tackle mud.

ROCK: Delivers Trail Rated® 4WD Low capability thanks to its rear-differential locking element, allowing you to crawl over rugged terrain at appropriately safe speeds. Exclusively on Trailhawk®.



THE SUN, MOON AND STARS — ALL WITHIN REACH.

MY SKY® OPEN-AIR SUNROOF SYSTEM:

Way more than a sunroof, the class-exclusive¹ available My Sky® Open-Air Sunroof System innovation allows you to see more of everything. The system consists of two easily removable¹⁶ panels, optimally sized for flat storage in the cargo area. Panels are lightweight, strong and help maintain cabin acoustics. Each panel weighs a mere 10 pounds and can be easily taken off and replaced by one person. My Sky opens up your world and brings it all in.



The available power retractable option operates like a traditional sunroof, allowing fore and aft ventilation of the front panel.



Park Renegade® and remove¹⁶ the front panel completely for a dose of fresh air. A special supplied key releases the panels so they can be lifted out.

Both available versions allow you to manually remove¹⁶ both front and rear panels for a full-on open-air experience.

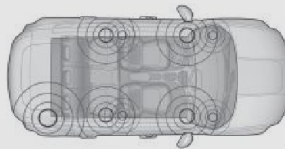


When you remove¹⁶ the My Sky panels, slip them into the included protective storage bag, which fits perfectly into the rear cargo area.



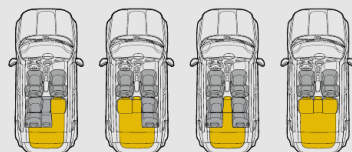
9-SPEAKER BEATSAUDIO™ PREMIUM SOUND SYSTEM:

The available premium sound system maximizes every square inch with studio-quality sound from nine top-line speakers, including a 6.5-inch subwoofer in the rear. This eight-channel performance sound system pumps out 506 watts of power that can definitely make your presence known.



VERSATILE CARGO AREA: Renegade is always ready to accommodate all kinds of cargo and passenger configurations with its best-in-class¹ interior volume (cu ft) and available 40/20/40 split-folding rear seat with pass-through. Turn down the “40/20” sections to carry a good amount of stuff in the back, leaving the remaining “40” section open for that much-needed third passenger — the one who’s willing to carry the heavy loads.

ADJUSTABLE CARGO FLOOR: Renegade’s available height-adjustable rear cargo floor stands ready to provide increased cargo space. Raise it up for easy, slide-in loading or lower it to have more room to carry taller items.



ALWAYS THE RIGHT FIT.

TEK-TONIC STYLE: This unique cabin is designed with an array of textures, fabrics, soft-touch surfaces and anodized color trim. Available leather-trimmed seats are contoured and cushioned for cruising, accented with eye-catching contrast stitching, with an available eight-way power-adjustable driver’s seat with four-way power lumbar adjustment.

AUTO-DIMMING REARVIEW MIRROR: Reduce annoying and distracting reflective glare by simply pushing a button at the base of the mirror. Available.



MADE TO HANDLE IT ALL: Your Jeep® brand steering wheel arrives with standard audio controls and available stitch-accented leather wrapping, with buttons for available cruise, voice and phone control. You’ll have hands-free³ access to vehicle performance data, and much more, too. Front-seat passengers can take hold of the grab handle, taken straight from Wrangler’s legendary playbook.

TEEMING WITH TECH: Innovation is everywhere you turn with an available premium 6.5-inch touchscreen radio system with navigation, Integrated Voice Command³ with Bluetooth® and texting,¹⁷ and an available 7-inch full-color Driver Information Display (DID) cluster that puts an array of vehicle stats on your dashboard. One USB port is standard and another is available, so you can power up a number of devices.





UCONNECT® 6.5-INCH NAVIGATION SYSTEM: Access today's smartest communication technologies within a masterfully simple system. Integrated Voice Command³ with Bluetooth® allows drivers to stay focused on the road while using a full spectrum of available Uconnect® services to communicate, navigate and access information and entertainment. Features include:

- 6.5-inch Color Touchscreen Display
- Integrated Voice Command³ with Bluetooth
- Hands-free³ Calling
- Voice Text Reply¹⁷
- Bluetooth Streaming Audio
- Uconnect Access⁶ (1-year trial)
- 3D Navigation with One-step Voice Destination Entry
- HD Radio
- Media Hub (auxiliary input jack and USB port)
- SiriusXM® Satellite Radio¹⁹ (1-year trial)
- SiriusXM Travel Link¹⁹ (5-year trial)
- SiriusXM Traffic¹⁹ (5-year trial)



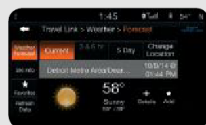
SIRIUSXM SATELLITE RADIO¹⁹:

With the SiriusXM All Access¹⁹ package, you get every channel available on your satellite radio, including commercial-free music, sports, news, talk and entertainment. Plus, listen wherever you go on your portable devices with the SiriusXM app, which is included with your one-year trial. Available.



SIRIUSXM TRAVEL LINK¹⁹:

Receive National Weather Service-issued emergency alerts for flooding, winter weather, tornadoes and more. Weather radar provides information on storm direction, speed and track, for a range of severe weather conditions. Current conditions and five-day forecasts help you adjust travel plans accordingly. Your first five years of SiriusXM Travel Link¹⁹ are included. Available.



SIRIUSXM TRAFFIC¹⁹: With SiriusXM Traffic¹⁹, you can avoid congestion before you reach it. Get detailed information on traffic speed, accidents, construction, road closures and more, and you will get to your destination faster and more easily than ever before. Your first five years of SiriusXM Traffic¹⁹ service are included. Available.



DRIVER INFORMATION DISPLAY (DID): Fingertip controls on your steering wheel can instantly scroll you through a selection of vehicle data displayed within your instrument panel on a 7-inch color screen. Information includes navigation, capability data, performance statistics, vehicle dynamics, alerts and more. Standard on Trailhawk® and Limited. A 3.5-inch Black-and-White Thin Film Transistor (TFT) high-resolution cluster display is standard on Sport and Latitude.

PARKVIEW® REAR BACK-UP CAMERA⁴ WITH DYNAMIC GRID LINES: Back out safely with grace. This system helps bring previously hidden rear objects to your attention, either on-screen or with an audible warning, in good time to react. Available.



UCONNECT ACCESS® APP: From virtually anywhere, use your computer or the custom smartphone app to remotely lock or unlock your vehicle, start the engine, or sound the horn and flash the lights.

YELP®²²: Conduct a real-time local search to find restaurants, coffee shops and other businesses, sorted by rating and location.

WIFI HOTSPOT¹⁰: Create a mobile hotspot in and around your vehicle, so passengers can connect securely with wireless devices. Available through Mopars.

INSTANT IN-VEHICLE ASSIST: Questions about a Uconnect feature, app or your new Renegade®? Press the Access button to connect with the right source for answers.

THEFT ALARM NOTIFICATION²¹: Choose to receive a text or email alert anytime your vehicle's theft alarm is activated.

VOICE TEXTING⁷: Stay safely connected with cloud-based voice texting on compatible Bluetooth-enabled phones, allowing you to hear and dictate messages.

ROADSIDE ASSISTANCE CALL²: The Assist button on the overhead console connects you to Roadside Assistance², which automatically knows your vehicle and location. Additional fees may apply.

STOLEN VEHICLE ASSISTANCE²⁰: If your vehicle is ever stolen, Uconnect can provide its location to aid police recovery.

UCONNECT ACCESS⁶

This suite of available features and services is the next generation of in-vehicle connectivity, with the ease of Voice Command³ and fingertip control.

9-1-1 CALL¹: In the event of an emergency, a button on the overhead console instantly connects you with local authorities.



UP TO 70 AVAILABLE SAFETY AND SECURITY FEATURES.

SEVEN STANDARD AIR BAGS¹: Your sense of security is fully met with this all-around air bag⁴ system. Full-length front and rear side-curtain, driver inflatable knee bolster, seat-mounted side for front occupants, and advanced multistage driver and front passenger air bags⁴ all work in tandem to help provide encompassing protection. Standard.

ELECTRONIC STABILITY CONTROL (ESC)⁵: A vehicle-wide network of safety sensors provide instant aid should they detect you're veering off your intended path. ESC⁵ coordinates Electronic Roll Mitigation (ERM), Hill Start Assist (HSA), antilock brake system (ABS) and Advanced Brake Assist, all-speed traction control and Trailer Sway Control (TSC)⁵ sending them into action when needed. Standard.

INTEGRATED VOICE COMMAND³ WITH BLUETOOTH®: Allows driver to safely send, reply to or listen to a text, take or make phone calls, request detailed information like fuel prices, get navigation directions and more while keeping both hands on the wheel. Available on Bluetooth®-compatible smartphones.

UCONNECT ACCESS⁶ WITH 9-1-1 CALL¹ AND ROADSIDE ASSISTANCE CALL²: A direct connection to help is right at hand with Uconnect Access⁶, the next benchmark in emergency vehicle assistance. Two buttons on the overhead console offer connections to a 9-1-1 call center,⁷ or press Assist button to quickly summon roadside help.⁸ Available.

RAIN-SENSING WINDSHIELD WIPERS: Storm clouds hold little influence over your daily drive. Front wipers activate when raindrops are detected. Available.

TRAILER SWAY CONTROL (TSC)⁵: Crosswinds and traffic hold no sway over you and your payload. As part of ESC,⁵ TSC⁵ helps keep you and the toys you are towing safely on course. Standard.



WINDSHIELD WIPER DE-ICER: Maintain a clear view of the road ahead during snowy weather. Heating elements on the lower inside windshield glass help keep wipers free from ice and the windshield clear for an unobstructed view of the road. Available.

PARKSENSE® REAR PARK ASSIST SYSTEM⁹: Renegade® can help you park and back out with grace. This system uses rear ultrasonic sensors to determine relative distance to objects in your back-up pathway. Readouts in the Driver Information Display (DID) notify the driver of rear object proximity. Available.

CHASSIS STRENGTH: Renegade delivers exceptional peace of mind with a hero's heart — a strong unibody structure is constructed with nearly 70 percent high-strength steel. Standard.

BLIND-SPOT MONITORING (BSM)¹⁰ AND REAR CROSS-PATH DETECTION⁹: These sentry systems constantly monitor the space between you and other drivers via dual wideband radar sensors located in the rear quarter panels. When a side or rear blind spot is encroached, you're notified via illuminated icons on sideview mirrors. Rear Cross-Path Detection⁹ notifies you of vehicles crossing your path when in Reverse or backing out of a parking space. Available.

LANESENSE® LANE DEPARTURE WARNING WITH LANE KEEP ASSIST (LDW+)¹¹: The vehicle's lane position is monitored by a camera mounted near the rearview mirror and, should the driver drift outside of lane boundaries and no turn signal is applied or if the driver's hands are off the wheel, a visual warning is given through the DID and steering-wheel movement is felt. Available.

FULL-SPEED FORWARD COLLISION WARNING WITH ACTIVE BRAKING (FSCFW+)¹²: Radar sensors and a forward camera detect when Renegade may be approaching another vehicle too rapidly and send an audible and visual alert along with a brake jerk if the driver does not react in time. Includes Advanced Brake Assist (ABA), which increases brake pressure if the driver isn't braking enough, and the Collision Mitigation System (CMS) reacts if the driver doesn't, which will actuate the brake system to avoid a collision. Available.



THE JEEP® LIFE BEGINS

MODELS, MEASUREMENTS AND RESOURCES

The road to legendary freedom starts here. Which path will you choose? Every Renegade® model comes with a range of resources to help turn dreamers into doers.



L I M I T E D

STANDARD

- 2.4L Tigershark® I-4 engine with 9-speed automatic transmission with AutoStick
- Flex Fuel vehicle (FWD only)
- Capless fuel filler door
- Black-accent roof
- Power, heated side mirrors with turn signals in Silver Metallic
- Silver Metallic roof rails, exhaust tip and front grille with Chrome surrounds
- Windshield wiper de-icer
- Rain-sensing windshield wipers
- Cornering front fog lamps
- Automatic, halogen headlamps with off-time delay
- Daytime running lamp system
- Deep-tint sunscreen glass
- Tire Service Kit
- 225/55R18 All-Season tires
- Front/rear power windows with front 1-touch up/down
- Speed-sensitive power door locks
- Front variable/intermittent wipers; rear defroster and wiper/washer
- Air conditioning with Dual-Zone Automatic Temperature Control (ATC)
- Height-adjustable rear cargo floor
- 7-inch, full-color Driver Information Display (DID)
- Media hub with USB port and auxiliary input jack
- One 115-volt and two 12-volt auxiliary power outlets
- Front/rear floor mats
- Ambient LED interior lighting
- Sun visors with illuminated vanity mirror
- Outside temperature display
- Leather-wrapped, heated steering wheel with audio and cruise controls
- Leather-wrapped shift knob
- Premium leather-trimmed seats with accent stitching and embossed Jeep® grille on seatback
- Front-passenger fold-forward seat
- Heated front seats
- 8-way power driver's seat with 4-way power lumbar adjuster and manual 4-way passenger seats
- Rearview auto-dimming mirror
- 40/20/40 split-folding rear seats with pass-through and three rear-seat head restraints²³
- Cargo tie-down loops
- 7 air bags⁴ including advanced multistage driver and front passenger, supplemental front and rear side-curtain, supplemental front seat-mounted side and driver's inflatable knee bolster
- All-Speed Traction Control
- Child Seat Anchor System, LATCH-ready
- ParkView® Rear Back-Up Camera⁹
- Tire pressure monitoring display
- Remote Start System
- Remote keyless entry with panic alarm
- Electronic Stability Control (ESC)⁵ with Electronic Roll Mitigation, Hill Start Assist and Trailer Sway Control⁵
- Antilock 4-wheel disc brakes
- Advanced Brake Assist
- Electric Park Brake
- 6 speakers
- Uconnect® 5.0 – Includes 5-inch touchscreen display, Integrated Voice Command³ with Bluetooth®
- SiriusXM® Satellite Radio¹⁹ includes 1-year trial subscription

AVAILABLE

- Jeep Active Drive full-time 4x4 system with disconnecting rear axle and Power Transfer Unit (PTU) (4x4 models only)
- Selec-Terrain® Traction Management System (4x4 models only)
- Body-color roof
- My Sky® Open-Air Sunroof System with power/removable¹⁶ panels and storage bag
- Full-size temporary-use spare
- Full-size spare tire with matching wheel (4x4 models only)
- Keyless Enter 'n Go™ with push-button start

- BeatsAudio™ 9-speaker premium sound system with subwoofer
- Uconnect 6.5 NAV – Includes 6.5-inch touchscreen display, GPS navigation, HD radio, Uconnect Access⁶ with 1-year trial subscription, Integrated Voice Command³ with Bluetooth, SiriusXM Satellite Radio¹⁹ with 1-year trial subscription and SiriusXM Traffic¹⁹ and SiriusXM Travel Link¹⁹ with 5-year trial subscriptions (packaged with Navigation/ SiriusXM Satellite Radio¹⁹ and 6.5-inch NAV Group with Uconnect)

ADVANCED TECHNOLOGY GROUP: Includes Full-Speed Forward Collision Warning with Active Braking (FSFCW+);¹² LaneSense® Lane Departure Warning with Lane Keep Assist (LDW+)¹¹ and ParkSense® Rear Park Assist⁷ (requires Safety & Security Group)

NAVIGATION/SIRIUSXM SATELLITE RADIO¹⁹: Includes HD radio, GPS navigation, remote USB port located in center console, Uconnect Access⁶ with 1-year trial subscription, SiriusXM Traffic¹⁹ and SiriusXM Travel Link¹⁹ with 5-year trial subscriptions, and Uconnect 6.5 NAV

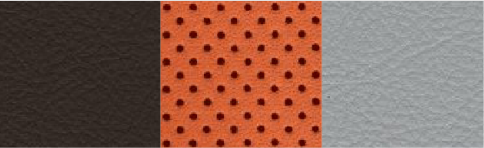
SAFETY & SECURITY GROUP: Includes Blind Spot Monitoring (BSM)¹⁰ and Rear Cross-Path Detection⁹ systems, tonneau cover and security alarm (not available with My Sky fixed/removable¹⁶ sunroof)

TRAILER TOW GROUP: Includes Class III hitch receiver plus 4-pin wiring harness (requires full-size spare tire; not available with My Sky fixed/removable¹⁶ sunroof; 4x4 models only)

6.5-INCH NAV GROUP WITH UCONNECT: Includes remote USB port, Uconnect Access⁶ with 1-year trial subscription and Uconnect 6.5 NAV



McKinley Leather/Perforated Textured Accent: Black with Light Frost accent stitching and Moroccan Sun bezel accents



McKinley Leather/Perforated Textured Accent: Bark Brown/Tangerine/Ski Gray with Tangerine accent stitching and anodized Orange bezel accents



18-inch Aluminum Polished and Painted Granite Crystal (standard)



18-inch Aluminum Polished and Painted Satin Silver (available)



T R A I L H A W K®

STANDARD

- 2.4L Tigershark® I-4 engine with 9-speed automatic transmission with AutoStick
- Jeep® Active Drive Low with disconnecting rear axle, full-time 4x4 system with low range, 20:1 crawl ratio
- Selec-Terrain® Traction Management System, including Rock mode
- Hill Descent Control
- 0.8-inch increased ride height
- Off-road suspension
- Skid plates for fuel tank, transmission, transfer case and suspension
- Front and rear Signature Red tow hooks
- Capless fuel filler door
- Badging, side mirrors and grille slot surrounds in Neutral Gray
- Black roof rails and roof
- Unique Trailhawk® and Trail Rated® badging
- Hood decal, Low-Gloss Black
- Unique front and rear fascias with Black grille
- Rain-sensing windshield wipers
- Power, heated side mirrors with turn signals in Neutral Gray
- Full-size spare tire
- Cornering front fog lamps
- Automatic, halogen headlamps with off-time delay
- Daytime running lamp system
- Deep-tint sunscreen glass
- 215/65R17 OWL All-Terrain tires
- Front/rear power windows with front 1-touch up/down
- Speed-sensitive power door locks
- Front variable/intermittent wipers; rear defroster and wiper/washer
- 7-inch full-color Driver Information Display (DID)
- One 115-volt and two 12-volt auxiliary power outlets
- Premium cloth seats with topographic map inserts, accent stitching and embroidered logo in Ruby Red
- Leather-wrapped shift knob
- All-weather front/rear floor mats
- Air conditioning with air filtration
- Ambient LED interior lighting
- Media hub with USB port and auxiliary input jack
- Rearview day/night mirror
- Sun visors with illuminated mirror
- Outside temperature display
- Leather-wrapped steering wheel with audio and cruise controls
- Manual 6-way driver's seat and 4-way passenger seat including driver's height-adjustable seat
- Front-passenger fold-forward seat
- 60/40 split-folding rear seats with three head restraints²³
- 7 air bags⁴ including advanced multistage driver and front passenger, supplemental front and rear side-curtain, supplemental front seat-mounted side and driver's inflatable knee bolster
- All-Speed Traction Control
- Child Seat Anchor System, LATCH-ready
- Electric Park Brake
- Antilock 4-wheel disc brakes
- Advanced Brake Assist
- Electronic Stability Control (ESC)⁵ with Electronic Roll Mitigation (ERM), Hill Start Assist and Trailer Sway Control⁵
- ParkView® Rear Back-Up Camera⁹
- Remote keyless entry with panic alarm
- Tire pressure monitoring display
- 6 speakers
- Uconnect® 5.0 – Includes 5-inch touchscreen display, Integrated Voice Command³ with Bluetooth®
- SiriusXM® Satellite Radio¹⁹ includes 1-year trial subscription

AVAILABLE

- My Sky® Open-Air Sunroof System with dual manual removable¹⁶ panels with storage bag (not available with Popular Equipment Group)
- My Sky Open-Air Sunroof System with power/removable¹⁶ panels and storage bag
- Luxury leather-trimmed seats in Black with Ruby Red accent stitching and embroidered Trailhawk logo

- Keyless Enter 'n Go™ with push-button start; requires Remote Start System
- Remote Start System – Requires Keyless Enter 'n Go
- BeatsAudio™ 9-speaker premium sound system with subwoofer
- Uconnect 6.5 NAV – Includes 6.5-inch touchscreen display, GPS navigation, HD radio, Uconnect Access⁶ with 1-year trial subscription, Integrated Voice Command³ with Bluetooth, SiriusXM Satellite Radio¹⁹ with 1-year trial subscription, SiriusXM Traffic¹⁹ and SiriusXM Travel Link¹⁹ with 5-year trial subscriptions (packaged with Navigation/SiriusXM Satellite Radio¹⁹ and 6.5-inch NAV Group with Uconnect)

COLD WEATHER GROUP: Includes heated front seats, heated steering wheel, windshield wiper de-icer, all-season floor mats and rain-sensing windshield wipers (requires Remote Start System)

NAVIGATION/SIRIUSXM SATELLITE RADIO¹⁹: Includes HD radio, GPS navigation, remote USB port located in center console, Uconnect Access⁶ with 1-year trial subscription, SiriusXM Traffic¹⁹ and SiriusXM Travel Link¹⁹ with 5-year trial subscriptions, and Uconnect 6.5 NAV

POPULAR EQUIPMENT GROUP: Includes power 8-way driver's seat with 4-way lumbar adjuster and manual 4-way passenger seat, 40/20/40 rear seat with pass-through, rearview auto-dimming mirror and air conditioning with Dual-Zone ATC (requires Remote Start System, not available with My Sky fixed/removable¹⁶ sunroof and Premium Leather Group for Trailhawk)

PREMIUM LEATHER GROUP FOR TRAILHAWK: Includes luxury leather-trimmed seating with Ruby Red accent stitching, power 8-way driver's seat and power 4-way lumbar adjuster with manual 4-way passenger seat, heated front seats, heated steering wheel, 40/20/40 rear seat with pass-through, air conditioning with Dual-Zone ATC rearview auto-dimming mirror and windshield wiper de-icer (requires Remote Start System; not available with Cold Weather Group and Popular Equipment Group)

SAFETY & SECURITY GROUP: Includes Blind Spot Monitoring (BSM)¹⁰ and Rear Cross-Path Detection⁹ systems, tonneau cover and security alarm (not available with My Sky fixed/removable¹⁶ sunroof)

TRAILER TOW GROUP: Includes Class III hitch receiver plus 4-pin wiring harness (requires full-size spare tire; not available with My Sky fixed/removable¹⁶ sunroof, 4x4 models only)

6.5-INCH NAV GROUP WITH UCONNECT: Includes remote USB port, Uconnect Access⁶ with 1-year trial subscription and Uconnect 6.5 NAV



Washington Cloth/Metric Topographic Cloth: Black with Ruby Red accent stitching and embroidered logo plus anodized Ruby Red bezel accents (standard)



McKinley Leather: Black with Ruby Red accent stitching and embroidered logo plus anodized Ruby Red bezel accents (available)



17-inch Off-Road Black Aluminum (standard)



L A T I T U D E

STANDARD

- 1.4L MultiAir® Turbo I-4 engine with 6-speed manual transmission
- Capless fuel filler door
- Automatic halogen headlamps with off-time delay
- Cornering front fog lamps
- Black roof rails
- Body-color power, heated mirrors with body-color door handles and Black front grille fascia with Chrome surrounds
- Deep-tint sunscreen glass
- Daytime running lamp system
- 215/65R16 All-Season tires
- Tire Service Kit
- Front/rear power windows with front 1-touch up/down
- Speed-sensitive power door locks
- Front variable/intermittent wipers; rear defroster and wiper/washer
- Air conditioning with air filtration
- Ambient LED interior lighting
- Leather-wrapped steering wheel with audio and cruise controls
- Cloth bucket seats with accent stitching
- Two 12-volt auxiliary power outlets
- Carpeted front/rear floor mats
- Silver shift knob
- 3.5-inch black-and-white Driver Information Display (DID)
- Rearview day/night mirror
- Sun visors with illuminated mirror
- Outside temperature display
- Manual 6-way driver's seat and 4-way passenger seat including driver's height-adjustable seat
- 60/40 split-folding rear seats with three head restraints²³
- Height-adjustable rear cargo floor
- Media hub with USB port and auxiliary input jack
- Front-passenger fold-forward seat
- ParkView® Rear Back-Up Camera⁹
- Electronic Stability Control (ESC)⁵ with Electronic Roll Mitigation, Hill Start Assist and Trailer Sway Control¹⁵

AVAILABLE

- 2.4L Tigershark® engine with 9-speed automatic transmission with AutoStick
- Flex Fuel vehicle – Requires 2.4L engine; FWD only
- Jeep® Active Drive full-time 4x4 system with disconnecting rear axle and Power Transfer Unit (PTU); 4x4 models only
- Selec-Terrain® Traction Management System (4x4 models only)
- Black-accent roof
- My Sky® Open-Air Sunroof System with dual manual removable¹⁶ panels with storage bag (not available with Safety & Security Group and Popular Equipment Group)
- My Sky Open-Air Sunroof System with power/removable¹⁶ panels and storage bag
- Full-size temporary-use spare tire (not available with Trailer Tow Group)
- Full-size spare tire with matching wheel (4x4 models only)
- Vinyl shift knob (included with 9-speed automatic transmission)
- Keyless Enter 'n Go™ with push-button start; requires Remote Start System and 9-speed automatic transmission

- Remote Start System – Requires Keyless Enter 'n Go and 9-speed automatic transmission
- Uconnect 6.5 NAV – Includes 6.5-inch touchscreen display, GPS navigation, HD radio, Uconnect Access⁶ with 1-year trial subscription, Integrated Voice Command³ with Bluetooth, SiriusXM Satellite Radio¹⁹ with 1-year trial subscription, and SiriusXM Traffic¹⁹ and SiriusXM Travel Link¹⁹ with 5-year trial subscriptions (packaged with Navigation/SiriusXM Satellite Radio¹⁹ and 6.5 NAV Group with Uconnect)

ADVANCED TECHNOLOGY GROUP: Includes Full-Speed Forward Collision Warning with Active Braking (FSFCW+),¹² LaneSense® Lane Departure Warning with Lane Keep Assist (LDW+)¹¹ and ParkSense® Rear Park Assist⁶ (requires Safety & Security Group and 2.4L Tigershark engine with 9-speed automatic transmission)

COLD WEATHER GROUP: Includes all-season front and rear floor mats, PTC auxiliary heater booster when equipped with the 1.4L/6-speed manual transmission, heated front seats, heated steering wheel, rain-sensing windshield wipers and windshield wiper de-icer; models with 9-speed automatic transmission require Remote Start System

NAVIGATION/SIRIUSXM SATELLITE RADIO¹⁹: Includes HD radio, GPS navigation, remote USB port located in center console, Uconnect Access⁶ with 1-year trial subscription, SiriusXM Traffic¹⁹ and SiriusXM Travel Link¹⁹ with 5-year trial subscriptions, and Uconnect 6.5 NAV with 6.5-inch touchscreen display

POPULAR EQUIPMENT GROUP: Includes power 8-way driver's seat with 4-way lumbar adjuster and manual 4-way passenger seat, 40/20/40 rear seat with pass-through, air conditioning with Dual-Zone ATC, rearview auto-dimming mirror and 115-volt auxiliary power outlet (requires Remote Start System and 9-speed automatic transmission, not available with My Sky fixed/removable¹⁶ sunroof)

SAFETY & SECURITY GROUP: Includes Blind Spot Monitoring (BSM)¹⁰ and Rear Cross-Path Detection⁷ systems, rain-sensing windshield wipers, tonneau cover and security alarm (requires Remote Start System, Keyless Enter 'n Go and 9-speed automatic transmission; not available with My Sky fixed/removable¹⁶ sunroof)

TRAILER TOW GROUP: Includes Class III hitch receiver plus 4-pin wiring harness (requires 2.4L Tigershark engine and full-size spare tire; not available with My Sky fixed/removable¹⁶ sunroof; 4x4 models only)

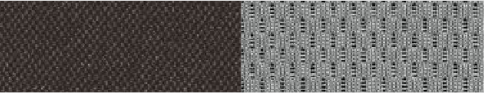
6.5-INCH NAV GROUP WITH UCONNECT: Includes remote USB port, Uconnect Access⁶ with 1-year trial subscription and Uconnect 6.5 NAV



Washington Cloth/Jeep Mesh Cloth: Black with matching accent stitching and Moroccan Sun bezel accents



Washington Cloth/Jeep Mesh Cloth: Black/Sandstorm with Cattle Tan accent stitching and Metal Diamond bezel accents (shown)



Washington Cloth/Jeep Mesh Cloth: Bark Brown/Ski Gray with Tangerine accent stitching and anodized Orange bezel accents



16-inch Aluminum Polished and Painted Granite Crystal (standard with 1.4L MultiAir engine)



17-inch Tech Silver Aluminum (available with 2.4L Tigershark engine)



18-inch Aluminum Polished and Painted Granite Crystal (available)



S P O R T

STANDARD

- 1.4L MultiAir® Turbo I-4 engine with 6-speed manual transmission
- Black door handles, exterior mirrors and front grille fascia with chrome surrounds
- Halogen headlamps with off-time delay
- Daytime running lamp system
- Capless fuel filler door
- Front/rear power windows with front 1-touch up/down
- Height-adjustable rear cargo floor
- 215/65R16 All-Season tires
- Tire Service Kit
- Front variable/intermittent wipers; rear defroster and wiper/washer
- 3.5-inch black-and-white Driver Information Display (DID)
- Media hub with USB port and auxiliary input jack
- Two 12-volt auxiliary power outlets
- Steering wheel with audio controls
- Front/rear power windows with front 1-touch up/down
- Speed-sensitive power door locks
- Premium cloth bucket seats with accent stitching
- Manual 6-way driver's seat and 4-way passenger seat including driver's height-adjustable seat
- Front-passenger fold-forward seat
- 60/40 split-folding rear seats with three head restraints²³
- Front floor console with sliding armrest and cup holders
- Carpeted front/rear floor mats
- Silver shift knob
- Rearview day/night mirror
- Driver and front-passenger sun visors with mirror

- Outside temperature display
- Front-passenger seatback map pocket
- Driver and front-passenger assist handles
- Locking glove box with lamp
- All-Speed Traction Control
- Electronic Stability Control (ESC)⁵ with Electronic Roll Mitigation, Hill Start Assist and Trailer Sway Control¹⁵
- Antilock 4-wheel disc brakes
- Electric Park Brake
- Remote keyless entry with panic alarm
- Tire pressure monitoring display
- Cargo tie-down loops
- 7 air bags⁴ including advanced multistage front driver and passenger, supplemental front and rear side-curtain, supplemental front seat-mounted side and driver's inflatable knee bolster
- Advanced Brake Assist
- Child Seat Anchor System, LATCH-ready
- Center rear 3-point seat belt
- Battery-rundown protection
- 4-speaker audio system
- Radio 3.0 with 4-line LCD display

AVAILABLE

- 2.4L Tigershark® engine with 9-speed automatic transmission with AutoStick (requires Power & Air Group and air conditioning)
- Flex Fuel vehicle (requires 2.4L engine; FWD only)
- Engine oil cooler (included with 2.4L Tigershark engine)
- Jeep® Active Drive full-time 4x4 system with disconnecting rear axle and Power Transfer Unit (PTU); 4x4 models only

- Selec-Terrain® Traction Management System (4x4 models only)
- 16-inch aluminum wheels
- Full-size temporary-use spare tire
- Black roof rails (when equipped with the My Sky® Open-Air Sunroof System with dual manual removable¹⁶ panels)
- My Sky Open-Air Sunroof System with dual-manual removable¹⁶ panels and storage bag (packaged with Power & Air Group)
- Keyless Enter 'n Go™ with push-button start; requires Remote Start System and 9-speed automatic transmission
- Remote Start System – Requires Keyless Enter 'n Go and 9-speed automatic transmission
- ParkView® Rear Back-Up Camera,⁹ requires Power & Air Group and Uconnect® 5.0
- Vinyl shift knob (included with 9-speed automatic transmission)
- 6-speaker audio system (packaged with Uconnect 5.0 with ParkView Rear Back-Up Camera⁹)
- Uconnect 5.0 – Includes 5-inch touchscreen display, Integrated Voice Command³ with Bluetooth® including hands-free calling,³ voice prompts, voice commands⁴ for radio functions (requires Power & Air Group and 6 speakers)
- SiriusXM® Satellite Radio¹⁹ – With 1-year trial subscription (requires Uconnect 5.0)

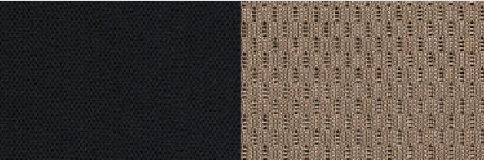
SIRIUSXM SATELLITE RADIO¹⁹ SOUND GROUP: Includes SiriusXM Satellite Radio¹⁹ and remote USB port (charging only) (requires Power & Air Group and Uconnect 5.0 Radio with ParkView Rear Back-Up Camera⁹)

UCONNECT 5.0 RADIO WITH PARKVIEW REAR BACK-UP CAMERA⁹: Includes 6-speaker audio system, Integrated Voice Command³ with Bluetooth, Uconnect 5.0 with 5-inch touchscreen display and ParkView Rear Back-Up Camera⁹ (requires Power & Air Group)

POWER & AIR GROUP: Includes power, heated Black side mirrors, air conditioning with air filtration and cruise control



Washington Cloth/Jeep Mesh Cloth: Black with matching accent stitching and Moroccan Sun bezel accents (shown)



Washington Cloth/Jeep Mesh Cloth: Black/Sandstorm with Cattle Tan accent stitching and Metal Diamond bezel accents



16-inch Black Styled Steel (standard)



16-inch Aluminum Polished and Painted Granite Crystal (available)





Alpine White

Anvil

Black

Colorado Red

Glacier Metallic

Granite Crystal Metallic

Omaha Orange*

Jetset Blue

Solar Yellow*

Mojave Sand

COLORS & SPECIFICATIONS

EXTERIOR
(inches unless otherwise specified)

Wheelbase	101.2
Overall Length	166.6
Overall Width (with open side mirrors)	79.6
Track, Front	60.6
Track, Rear	60.6
Overall Height, 4x4 FWD	66.5

Ground Clearance	4x2	4x4	Trailhawk®
Approach Angle (deg)	6.7	7.9	8.7
Breakover Angle (deg)	17.9	21.0	30.5
Departure Angle (deg)	21.2	24.0	25.7
Departure Angle (deg)	29.7	32.1	34.3
Water Fording ¹⁵	N/A	12.0	19.0

CAPACITIES/WEIGHTS
(pounds unless otherwise specified)

Fuel Tank (gal)	12.7
Base Curb Weight	
1.4L 4x2	3,045
1.4L 4x4	3,183
2.4L 4x2	3,187
2.4L 4x4	3,348
2.4L 4x4 Trailhawk	3,573
Towing Capacity (2.4L engine)	2,000

INTERIOR
(inches unless otherwise specified)

	Front/Rear
Seating Capacity (adults)	2 / 3
Head Room (without sunroof)	41.1 / 40.5
Head Room (with sunroof)	39.7 / 40.5
Leg Room	41.2 / 35.1
Shoulder Room	55.9 / 55.1
Hip Room	53.1 / 51.9
Cargo Volume ETA (cu ft)	118.6
Rear Seats Up	18.5
Rear Seats Folded	50.8

POWERTRAINS

Engine	1.4L MultiAir® Turbo I-4
Displacement (cu in)	83.48
Horsepower (SAE net hp @ rpm)	160 @ 5,500
Torque (SAE net lb-ft @ rpm)	184 @ 2,500 – 4,000
Engine	2.4L Tigershark®
Displacement (cu in)	144
Horsepower (SAE net hp @ rpm)	180 @ 6,400
Torque (SAE net lb-ft @ rpm)	175 @ 3,900

BRAKE SYSTEM

Antilock Brake System (ABS)

Front: 12- x 1.1-in vented rotor with 2.36-in single-piston floating caliper

Rear: 10.95- x 0.47-in solid rotor with 1.5-in single-piston floating caliper

SUSPENSION/CHASSIS

Body Design — Uniframe construction: body panels and frame members welded and bonded into a single unit.

Suspension — Front: MacPherson struts, coil springs, flat-front steel crossmember, high-strength steel double-shell lower control arms for 4x4 and high-strength steel mono-shell lower control arms for 4x2, stabilizer bar. Rear: Chapman struts, high-strength steel links, isolated steel rear cradle for 4x4 and not-isolated for 4x2, coil springs, stabilizer bar

Steering — Power rack and pinion, electric

Overall ratio:	15.7:1
Turns (lock-to-lock): 4x2 and 4x4:	2.68
Trailhawk:	2.76
Turning diameter (curb-to-curb): 4x2 and 4x4:	36.3 ft
Trailhawk:	35.3 ft

Electronic Stability Control (ESC)⁵ — 4-channel, 4-wheel antilock with active wheel-speed, vehicle-speed, steering wheel-angle, yaw-rate and lateral-acceleration sensors, vehicle stability management with 2-stage activation switch, All-Speed Traction Control, Brake Assist, Electronic Roll Mitigation (ERM) and Electronic Brake-Force Distribution (EBD).

JEEP SOCIAL ADVENTURES:
Expand your horizons to include authentic and active Jeep, online communities. Post stories, share photos, watch videos and get the latest news from Jeep gearheads and engineers. Fellow Jeep enthusiasts are waiting to hear from you, on Facebook, Twitter, Google+, Instagram and Pinterest, and see the latest videos on YouTube. Tune in and get out into the virtual world where thrilling adventures are happening every single day.

facebook.com/Jeep
twitter.com/Jeep
plus.google.com/+Jeep
instagram.com/Jeepofficial
pinterest.com/Jeep
youtube.com/TheJeepChannel

GO MOBILE: Take a multimedia tour of your vehicle on your mobile device. Log on to the jeep.com mobile site for a comprehensive, at-a-glance review of what you need to know about your Jeep vehicle. Experience visual and interactive demonstrations of the entire lineup, gaining access to product information at your fingertips, wherever you go.

JEEP BADGE OF HONOR:
Introducing a new online community that invites off-roading fans to sign in, sign up, download the smartphone app and check in to legendary off-road trails across the U.S.A. earmarked by the Jeep Badge of Honor. Members can discover special trails and maps, earn Trail Points and ranks within the community, share photos and learn more about Jeep Trail Ratings. Connect with fellow Jeep vehicle owners and like-minded friends at jeep.com/badge-of-honor

JEEP JAMBOREES: For those who are driven by an adventurous spirit, we invite you to join us on the trail. You can head for parts unknown or return to fun, familiar places. Jeep Jamboree U.S.A. offers off-road adventure weekends that bring together the outdoors, down-to-earth people and their Jeep 4WD vehicles. We invite you to explore America's remote backcountry, where great friendships and memories are made. jeepjamboreeusa.com

JEEP GEAR: Uncover an extensive line of fun that's been developed exclusively for the Jeep brand enthusiast. From authentic wearables to unique gifts, all items are as rugged and durable as your Jeep vehicle. Express your true nature. Learn more at jeep.com/gear

DELVE DEEPER INTO THE JEEP BRAND WITH AN EXPANSIVE ARRAY OF SOCIAL MEDIA, SHOPPING AND OWNER RESOURCES. PLUS, DISCOVER ONE-OF-A-KIND EVENTS THAT CAN CREATE LIFELONG CONNECTIONS. EXPAND YOUR ADVENTURES IN EVERY DIRECTION BY VISITING JEEP.COM

*Not available on Limited.

J E E P ® R E N E G A D E / 2 0 1 6 B U Y E R ' S G U I D E



AUTHENTIC JEEP® ACCESSORIES

Whether you're climbing rugged hills or cruising smooth highways, raise the profile and capability of your Renegade® with Authentic Jeep® Accessories from Mopar®. You can count on these quality-engineered parts and accessories to keep your Renegade as authentic as the day you bought it. For a true, seamless fit and finish, exact color matches and high-quality materials, it's smart to choose Mopar for the life of your ride. In addition, your ownership experience is supported mile after mile with our expert technicians, Mopar Vehicle Protection® plans, Express Lane Service for a quick oil change and the online Mopar Owner Connect website (register at owners.jeep.com). See your Jeep dealer, or visit mopar.com for more information.



< ROOF-MOUNT SKI AND SNOWBOARD CARRIER*

< WHITE SNOWBOARDING HOOD AND BODYSIDE GRAPHICS

< DOOR SILL GUARDS

< HITCH-MOUNT BIKE CARRIER*

< ENVELOPE CARGO NET*

visit MOPAR.COM

PACKAGES

MOPAR® INTERIOR PREMIUM PACKAGE

- Premium Carpet Floor Mats
(available in Black or Brown)
- Premium Carpet Cargo Map
(available in Black or Brown)
- Bright Pedal Kit
- Available on models equipped with the 9-speed automatic transmission

MOPAR EXTERIOR APPEARANCE GROUP

- Chrome Front Air Deflector
- Front and Rear Splash Guards
- Side Window Deflectors

MOPAR INTERIOR PROTECTION PACKAGE

- All-Weather Floor Mats
- Rear Cargo Tray
- Bright Door Entry Guards

*Properly secure all cargo.

=====

HOW FAR WOULD YOU GO

if you could go anywhere?

=====



=====

THE JEEP® BRAND OFFERS SOME OF THE BEST OWNERSHIP SUPPORT PROGRAMS AVAILABLE ANYWHERE.

=====



WARRANTIES: *Jeep® vehicles are covered by a 3-Year/36,000-Mile Basic Limited Warranty (excludes normal maintenance and wear items), as well as a 5-Year/60,000-Mile Powertrain Limited Warranty that is fully transferable. See your dealer for complete details and a copy of the 5-Year/60,000-Mile Powertrain Limited Warranty.*



MOPAR VEHICLE PROTECTION®: *Mopar Vehicle Protection has a vested interest in your satisfaction and owner experience with your new Jeep brand vehicle. This is the only extended protection provider backed by the manufacturer, FCA US LLC. We stand behind every Mopar Vehicle Protection plan with certified, factory-trained technicians and the use of authentic Mopar® parts. Your plan is honored at over 2,600 dealerships within the United States, Canada, Puerto Rico and Mexico. Be sure to ask for a Mopar Vehicle Protection plan at your dealership, call (800) 442-2666 or visit moparvehicleprotection.com*



MOPAR OWNER CONNECT: *STAY CONNECTED. Your Jeep® vehicle ownership gives you the credentials to access extensive vehicle information, service and maintenance records, recall notifications, and special offers through whatever device you prefer – computers, smartphones, or tablets! Register your Jeep® brand vehicle at owners.jeep.com or download the **Jeep Vehicle Owners app** for free at either Apple or Google Play stores.*



AUTOMOBILITY: *The FCA US LLC Automobility Program provides aftermarket reimbursement incentives on adaptive vehicle upfit equipment to help provide safe and reliable vehicle modifications, enhancing accessibility for all people. For more information, call (800) 255-9877 or visit chryslerautomobility.com*



JEEP MASTERCARD®: *Earn 3 points per \$1 on qualifying purchases made at FCA US LLC dealerships, 2 points per \$1 on qualifying travel purchases and 1 point per \$1 on qualifying purchases everywhere else with the new Jeep MasterCard. Points may be redeemed at your local dealership for cash off your new or used vehicle, accessories, parts or service — including your next oil change. Or choose from hundreds of other rewards, including travel, cash back to your account, merchandise or gift cards.²⁴ For more information or to apply, visit jeeppcard.com*



JEEP WAVE: *It's the universal greeting all Jeep vehicle owners know, and now it's the name of a new and exclusive owners' benefits program. With your enrolled Jeep brand vehicle, you'll enjoy access to a dedicated 24/7 exclusive Jeep owner support hotline, complimentary maintenance, first-day rental and trip-interruption coverage, VIP treatment at Jeep events across the country and discounts on select brands through our shopping network. Complimentary two-year enrollment for Trailhawk®. Available for purchase on other models.*



JEEP.COM (800) 925-JEEP

(1) Based on Jeep Brand Small SUV segmentation. (2) When properly equipped. Based on Jeep Brand Small SUV segmentation. (3) Requires a mobile phone equipped with the Bluetooth Hands-Free Profile. Visit UconnectPhone.com for system and device compatibility. (4) The Advanced Front Air Bags in this vehicle are certified to the new U.S. Federal regulations for Advanced Air Bags. Children 12 years old and younger should always ride buckled up in a rear seat. Infants in rear-facing child restraints should never ride in the front seat of a vehicle with a passenger front air bag. All occupants should always wear their lap and shoulder belts properly. (5) No system, no matter how sophisticated, can repeal the laws of physics or overcome careless driving actions. Performance is limited by available traction, which snow, ice and other conditions can affect. When the ESC warning lamp flashes, the driver needs to use less throttle and adapt speed and driving behavior to prevailing road conditions. Always drive carefully, consistent with conditions. Always wear your seat belt. (6) Uconnect Access is available only on equipped vehicles purchased within the contiguous United States plus Alaska. Services can only be used where cellular coverage is available, see coverage map for details. For a complete list of Uconnect Access services, please visit http://www.driveuconnect.com/features/uconnect_access/packages/. Vehicle must be registered for Uconnect Access and fulfill minimum subscription requirement. (7) The 5-1-1 Call button will connect you directly with Emergency Assistance. If you accidentally press the button, you have 10 seconds to cancel the call by either pressing the 5-1-1 button on the rearview mirror or the Cancel button on the Uconnect touchscreen. (8) Provides direct-dial access to Roadside Assistance Service. Vehicle must be within the United States, have network coverage and must be registered with Uconnect Access with an active subscription that includes the applicable feature. Additional roadside assistance charges may apply. Check warranty for details. (9) Always look before proceeding. An electronic drive aid is not a substitute for conscientious driving. Always be aware of your surroundings. (10) Always check visually for vehicles prior to changing lanes. (11) This system is a driver convenience system, not a substitute for active driver involvement. The driver must remain aware of traffic conditions and maintain control of the vehicle. (12) This system is not intended to avoid collisions on its own, nor can FCW detect every type of potential crash. The driver must remain aware of traffic conditions and be prepared to brake and steer to avoid potential collisions at all times. (13) Most Capable Small SUV Ever is based on historical U.S. unibody B-SUV segment competitors as identified by Ward's Small Crossover and Small SUV segments (years 1985 – 2014). Atd capability based on Jeep B-SUV offering low-range power transfer unit (PTU) with 20.1 crawl ratio, low-range 4x4 capability. (14) Best-in-class Atd capability based on Jeep Renegade offering low-range power transfer unit (PTU) with 20.1 crawl ratio, low-range 4x4 capability. Based on Jeep Brand Small SUV segmentation. (15) Do not attempt water fording unless depth is known and consistent with the vehicle's water fording rating in the Owner's Manual. Traversing water can cause damage that may not be covered by the new vehicle warranty. Always off-road responsibly in approved areas. (16) Be sure to follow all instructions in Owner's Manual for removal of top and doors, and lowering of windshield. Driving with doors off and windshield down is for off-road use only. (17) Voice Text Reply and Voice Texting features require a compatible mobile device enabled with Bluetooth Message Access Profile (MAP). Phone and some other smartphones do not currently support Bluetooth MAP. Visit www.UconnectPhone.com for system and device compatibility. Ensure MAP is ON and incoming message notification is enabled. Vehicle must be registered for Uconnect Access and you must fulfill minimum subscription requirements. Also requires the use of a compatible smartphone that supports text messaging and Bluetooth. Check UconnectPhone.com for device compatibility. (18) WiFi subscription required. Vehicle must be registered with Uconnect Access and fulfill minimum subscription requirements. Vehicle must be properly equipped and its active and usable cellular range for WiFi usage. WiFi Hotspot does not enable direct communication between multiple in-vehicle devices. Factors affecting the performance of WiFi Hotspot include: cellular network, signal strength and quality, time of day, number of channels used by the service provider, type of connection, number of clients using WiFi Hotspot and client device. This feature is not intended for use by the driver while the vehicle is in motion. Always drive safely. (19) SiriusXM subscriptions for audio and data services are sold by SiriusXM. Follow your first subscription. If you decide to continue listening after your trial, the subscription plan you choose will automatically renew thereafter and you will be charged according to your chosen payment method at then-current rates. Fees and taxes apply. To cancel you must call SiriusXM at 1-866-635-2349. See the SiriusXM Customer Agreement for complete terms and more information at www.siriusxm.com. All fees and programming subject to change. Your equipment and features for SiriusXM services will vary depending upon the vehicle you select and may be limited in select markets. ©20 If you have this feature and have reported your vehicle as stolen to an appropriate law enforcement agency, Uconnect will try to locate your vehicle after receiving proper documents and once law enforcement contacts Uconnect Customer Care. Uconnect may refuse to locate your vehicle if you do not provide the requested information or documents. Always notify law enforcement if your vehicle is stolen and do not attempt to recover it on your own. (21) Vehicle must be registered with Uconnect Access and fulfill minimum subscription requirements. Vehicle must also be properly equipped and in an active and usable cellular range. Theft Alarm Notification is only available on factory-installed alarms. (22) Certain features are not available while vehicle is in motion. (23) Always sit properly with the head restraint properly adjusted. Never place anything in front of the head restraint. (24) Complete details, including restrictions, limitations and exclusions, will be available when you become a Cardmember. MasterCard is a registered trademark of MasterCard International Incorporated. This card is issued by First Bankcard, a division of First National Bank of Omaha, pursuant to a license by MasterCard International Incorporated.

©2015 FCA US LLC. All Rights Reserved. Jeep, the Jeep Grille, Renegade, Go Anywhere, Do Anything, LaneSense, Mopar, Mopar Owner Connect, Mopar Vehicle Protection, My Sky, ParkSense, ParkView, Selec-Terrain, TigerShark, Trailhawk, Trail Rated, and Uconnect are registered trademarks and Keyless Enter™ is a trademark of FCA US LLC.

Bluetooth is a registered trademark of Bluetooth SIG, Inc. Dr. Drs, Beats and the b logo are trademarks of Beats Electronics, LLC. Facebook is a registered trademark of Facebook Inc. Goodyear is a registered trademark of The Goodyear Tire & Rubber Company. Instagram is a registered trademark of Instagram, Inc. iPad, iPhone, iPod and iTunes are registered trademarks of Apple Inc. KONI is a registered trademark of KONI North America. MultiAir is a registered trademark of C.R.F. Società Consortile per Azioni, used under license by FCA US LLC. Pinterest is a registered trademark of Pinterest, Inc. Sirius, XM and all related marks and logos are trademarks of SiriusXM Radio Inc. The Twitter name, logo, Twitter T, Tweet, and Twitter bird are trademarks of Twitter, Inc. in the United States and other countries. Yelp is a registered trademark of Yelp, Inc. YouTube and Google+ social service are registered trademarks of Google Inc.

This brochure is a publication of FCA US LLC. All product illustrations and specifications are based upon current information at the time of publication approval. FCA US LLC reserves the right to make changes from time to time, without notice or obligation, in prices, specifications, colors and materials, and to change or discontinue models, which are considered necessary to the purposes of product improvement or for reasons of design and/or marketing.

73-383-2607 (136M 11/15)

Jeep is a registered trademark of FCA US LLC.

Research

BUILD & PRICE

COMPARE MODELS

COMPETITIVE COMPARE

SIGN UP FOR UPDATES

Locate

FIND A DEALER

SCHEDULE A TEST DRIVE

Cost

VIEW INCENTIVES & OFFERS



JEEP.COM