

# Insecticidal Soap

Multi-purpose  
Insect Control

TRUSTED SINCE 1926

**BONIDE**<sup>®</sup>

Ready to Use

May be used up to  
day of harvest

Kills insects in minutes

For use on vegetables, fruit and nut trees,  
citrus, berries, ornamentals, shrubs,  
flowers and trees in homes,  
gardens and greenhouses

Indoor/outdoor

**ACTIVE INGREDIENT:**

Potassium Salts of Fatty Acids..... 1%

**OTHER INGREDIENTS:**..... 99%

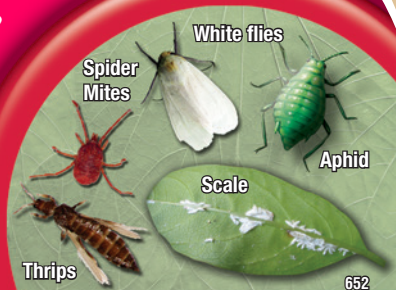
**TOTAL:**..... 100%

EPA Est No. 4-NY-1 EPA Reg. No. 67702-13-4

Keep Out Of Reach Of Children

**CAUTION** (See Back Panel for Additional  
Precautionary Statements and First Aid)

Net Contents 32 FL. OZ. (946 ML.)



652



FOR ORGANIC  
GARDENING

# Insecticidal

Multi-purpose  
Insect Control

# Soap

Ready to Use

- ✓ Controls: adelgids, aphids, earwigs, grasshoppers, lacebugs, mealybugs, mites, plant bugs, leafhoppers, psyllids, sawfly larvae, scale insects, tent caterpillars, thrips, whitefly, woolly aphids, powdery mildew and other listed pests
- ✓ For use on vegetables, fruit and nut trees, citrus, berries, ornamentals, shrubs, flowers, and trees in homes, gardens and greenhouses
- ✓ Does not persist in the environment
- ✓ For organic gardening



Made with Neudosan™ Insecticidal Soap,  
a trademark of W. Neudorff GmbH KG  
EPA Reg. No. 67702-13-4 EPA Est. No. 4-NY-1  
©Bonide Products, Inc. All Rights Reserved  
Distributed by: Bonide Products, Inc.  
6301 Sutliff Road, Oriskany, NY 13424  
Quart



## **DIRECTIONS FOR USE**

It is a violation of Federal law to use this product in a manner inconsistent with its labeling. Please read entire label before using. Use only as directed.

Shake container before use. This product is a contact spray and pests must be sprayed directly to achieve control. Thoroughly spray insect pests or powdery mildew to wetting on all plant parts, including undersides of leaves. Repeat treatment weekly or bi-weekly if needed. May be used on edible crops up to and including day of harvest.

Do not use on sweet peas, nasturtiums, delicate ferns. Use with care on new seedlings, transplants and blooms. Avoid spraying during full sun. If concerned about sensitivity of plants, apply to individual plants or small areas of plants and wait to determine if plant damage occurs prior to treatment of larger areas.

## **PESTS**

This product will control powdery mildew and listed insect pests such as: adelgids (woolly aphids), aphids, lacebugs, mealybugs, mites, grasshoppers, leafhoppers, scale insects, plant bugs, sawfly larvae (pear and rose slugs), psyllids, tent caterpillars, thrips, spider mites, earwigs and whitefly.

For use indoors, outdoors and in greenhouses on: fruit and nut trees (e.g., apples, cherries, peaches, pears, pecans, almonds); corn; soybeans; melons; tomatoes; vegetables (e.g., beans, cabbage, cucurbits, peas, potatoes); figs; small fruits (e.g., grapes, strawberry, raspberry); citrus; houseplants; ornamental and bedding plants; ornamental and shade trees (e.g., birch, evergreens, holly, oak).

### **STORAGE AND DISPOSAL**

**PESTICIDE STORAGE:** Store this product in its original container and keep in a secure storage area out of reach of children and domestic animals.

#### **PESTICIDE DISPOSAL AND CONTAINER HANDLING:**

**If empty:** Nonrefillable. Do not reuse or refill this container. Place in trash or offer for recycling if available.

**If partly filled:** Call your local solid waste agency or for disposal instructions. Never place unused product down any indoor or outdoor drain.

### **PRECAUTIONARY STATEMENTS**

**Environmental Hazards:** This product may be hazardous to aquatic invertebrates. To protect the environment, do not allow pesticide to enter or run off into storm drains, drainage ditches, gutters or surface waters. Applying this product in calm weather or when rain is not predicted for the next 24 hours will help to ensure that wind or rain does not blow or wash pesticide off the treatment area.

**NOTICE TO BUYER:** To the extent consistent with applicable law, seller warrants that this product conforms to the chemical description on this label and is reasonably fit for purposes stated on this label only when used in accordance with directions under normal use conditions.

This warranty does not extend to use of this product contrary to label directions, or under abnormal use conditions, or under conditions not reasonably foreseeable to seller. To the extent consistent with applicable law, buyer assumes all risk of any such use. To the extent consistent with applicable law, seller makes no other warranties, either expressed or implied.