

ANCAP Safety Rating

MITSUBISHI ASX (November 2016 - onwards)



Mitsubishi ASX

This ANCAP safety rating applies to:

Make / Model	Mitsubishi ASX
Year Range	November 2016 - onwards
Variant(s)*	All variants
Vehicle Type	Compact SUV

The Mitsubishi ASX was first released in Australia & New Zealand in 2010. The ASX was upgraded in November 2016 (MY17) and October 2019 (MY20). This ANCAP safety rating is based on ANCAP tests conducted in 2010 and applies to all variants built from October 2016 and September 2019, with corresponding safety specification (see page 2).

Dual frontal, side chest and side head airbags (curtains) and a driver knee airbag are standard. Reversing collision avoidance (camera) and emergency stop signal are standard. Autonomous emergency braking (AEB) with pedestrian detection is available as standard on MY20 variants. A full list of safety features and technologies can be viewed within the *Safety Features & Technologies* table on page 2 of this report.

Injury Outcomes.

Frontal Offset



Side Impact & Pole#



Whiplash Protection



Head protection only.

Test Results Summary.

Airbags	Dual Frontal, Side, Head, Knee
Frontal Offset Test	14.13 (out of 16)
Side Impact Test	16.00 (out of 16)
Pole Test	2.00 (out of 2)
Whiplash Protection	Good
Pedestrian Protection	Acceptable
ESC	Standard
Seat Belt Reminders	2.00 (out of 3)
Overall Score	34.13 (out of 37)
ANCAP Safety Rating	★★★★★
Rating Year^	2014

Occupant Protection.

Frontal Offset Test

Each body region is scored out of 4 points

Head / neck:	4.00 points
Chest:	3.90 points
Upper legs:	4.00 points
Lower legs:	2.22 points

The passenger compartment held its shape well in the frontal offset crash test. However, the clutch pedal moved rearwards excessively. After the crash all doors could be opened with normal effort. The airbag cushioned the head of the driver and contact was stable. The knee airbag protected the driver's knees.

Side Impact Test

Each body region is scored out of 4 points

Head:	4.00 points
Chest:	4.00 points
Abdomen:	4.00 points
Pelvis:	4.00 points

Good protection was provided for the driver in the side impact test.

Pole Test

Scored out of 2 points

Score:	2.00 points
--------	-------------

The vehicle was eligible for a side pole test because it has side curtain airbags. The vehicle scored the maximum 2 points for head protection in this test.

Whiplash Protection Test

Whiplash protection is assessed to the RCAR Protocol

Geometric test:	Good
Dynamic test:	Good
Overall whiplash rating:	Good

ANCAP Safety Rating

MITSUBISHI ASX (November 2016 - onwards)



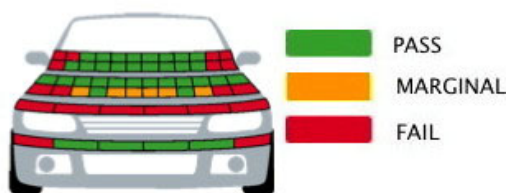
Pedestrian Protection.

Pedestrian Test

Scored out of 36 points

Adult & child head impacts: 17.57 points
 Upper leg impacts: 0.00 points
 Lower leg impacts: 4.00 points

This vehicle scored 21.57 out of 36 points (Acceptable). The bumper offered good protection to pedestrians' legs in most areas, but was poor towards the outer edges. The front edge of the bonnet was poor in all areas tested. In most areas likely to be hit by the head of a child, the bonnet provided good protection. Likewise, the bonnet offered good or marginal protection in almost all areas likely to be hit by an adult's head. (Tested by Euro NCAP v5)



Score Deductions.

Deductions from frontal offset test scores

Head / neck: No deductions
 Chest: No deductions
 Upper legs: No deductions
 Lower legs: -0.48 points from foot score (excessive clutch pedal rearward movement (112mm)).
 -0.21 points from foot score (blocked brake pedal)

Deductions from side impact test score

Head / neck: No deductions
 Chest: No deductions
 Abdomen: No deductions
 Pelvis: No deductions

Deductions from pole test score

Head: No deductions

Safety Features & Technologies.

Descriptions of each of these safety features and safety assist technologies (SAT) and detail on fitting requirements for each star rating level can be found at ancap.com.au.

Safety Feature / Safety Assist Technology	Availability	
	MY17	MY20
Seat belts (three-point, lap/sash) for all forward-facing seats	S	S
Seat belt pretensioners (front)	S	S
Seat belt pretensioners (rear outboard)	X	X
Intelligent seat belt reminder (driver)	S	S
Intelligent seat belt reminder (front passenger)	S	S
Intelligent seat belt reminder (2 nd row seats)	X	X
Airbag - Frontal (driver)	S	S
Airbag - Frontal (passenger)	S	S
Airbag - Side, chest protection (front seats)	S	S
Airbag - Side, chest protection (2 nd row seats)	X	X
Airbag - Side, head protection (front seats)	S	S
Airbag - Side, head protection (2 nd row seats)	S	S
Airbag - Knee (driver)	S	S
Airbag - Knee (front passenger)	X	X
Head restraints for all seats	S	S
Adaptive cruise control (ACC)	X	X
Antilock braking system (ABS)	S	S
Autonomous emergency braking (AEB)		
- City	X	S
- Interurban	X	S
- Vulnerable road user	X	S
Automatic headlights	V	O
Automatic high beam	X	O
Blind spot monitoring (BSM)	X	O
Daytime running lights (DRL)	E	S
Electronic brakeforce distribution (EBD)	S	S
Electronic stability control (ESC)	S	S
Emergency stop signal (ESS)	S	S
Emergency brake assist (EBA)	S	S
Hill launch assist	S	S
Lane support system (LSS)	X	O
Rain-sensing windscreen wipers	V	O
Reversing collision avoidance (camera)	S	S
Speed assistance – automatic / intelligent speed limiting (ISA)	X	X
Speed assistance - manual speed limiting / alarm	X	X
Speed assistance - speed sign recognition / map	X	X
Tyre pressure monitoring system (TPMS)	E	X

S = Standard on all variants.
O = Optional on base variant. May be standard on higher variants.
V = Not available on base variant but standard or optional on higher variants.
X = Not available on any variant.
E = Available in Europe / USA but not available on any Australasian variant.

These specifications are subject to change. Please check with the manufacturer for the latest specifications.

ANCAP Safety Rating

MITSUBISHI ASX (November 2016 - onwards)



Injury Values & Measurements.

Body Region	Frontal offset test at 64 km/h (v5.1)		Side impact test at 50 km/h (v5.1)
	Driver	Passenger	Driver
Head			
HIC	224.00	143.00	37.00
Acceleration (g for 3ms)	35.10	29.50	24.10
Neck			
Shear (kN)	0.38	0.57	-
Tension (kN)	1.12	0.64	-
Extension (Nm)	12.80	14.30	-
Chest			
Acceleration (g for 3ms)	-	-	-
Compression (mm)	22.67	20.00	9.30
Viscous criterion (m/s)	0.06	0.07	0.03
Abdomen			
Force (kN)	-	-	0.62
Pelvis			
Force (kN)	-	-	1.68
Upper legs			
Femur force left (kN)	1.06	0.34	
Femur force right (kN)	1.23	0.69	
Knee displacement left (mm)	1.39	0.23	
Knee displacement right (mm)	0.53	0.13	
Lower legs			
Force left (kN)	2.54	1.34	
Force right (kN)	2.13	1.06	
Index (upper / lower) left	0.41 / 0.80	0.36 / 0.23	
Index (upper / lower) right	0.32 / 0.43	0.27 / 0.19	
Intrusion Measurements*			
Steering column			
Forward (mm)	22		
Downward (mm)	33		
Sideways (mm)	13		
Pedals			
Clutch - rearward (mm)	112 (Blocked 76)		
Clutch - upward (mm)	69		
A-Pillar			
Rearward (mm)	1		

+ Steering column and pedal movements are measured relative to the driver's seat.

* **Model Variants:** ANCAP safety ratings do not automatically extend to variants that have different body styles, engine configurations, driven wheels or occupant restraint systems (e.g. fewer airbags). In these cases, ANCAP considers technical evidence submitted by manufacturers before deciding on extending a rating to additional variants of a model. For further information about the application of ANCAP safety ratings to model variants, see the ANCAP Variant Policy.

^ **Rating Year:** The Rating Year denotes the year requirements against which a vehicle has been assessed. The Rating Year is determined by ANCAP and may be based on the year in which a new vehicle model is first launched into the Australian and/or New Zealand markets; the year in which the vehicle was tested (if tested by Euro NCAP); or, for vehicles which hold an existing ANCAP safety rating, the year in which the rating was updated (or earlier applicable year).

Assessment Details.

Tested Make / Model	Mitsubishi ASX FWD
Tested Vehicle(s) Built	2010
Tested Body Type	Wagon
Tested Vehicle Kerb Weight	1360 kg
Tested Vehicle Engine	2.0 litre petrol
Tested By	ANCAP / Euro NCAP (pedestrian)
Assessed By	ANCAP
Document Reference	ASX16
Document Created / Revised	15 November 2016
Rating Published	November 2016
Rating Updated	October 2019



Frontal offset test at 64km/h