

Crash Test Results

New Car Safety

TOYOTA HIACE

From Sept 2011

Dual front airbags



ANCAP
Rated ★★★★★

Occupant Protection

Occupant Protection Score 25.50 out of 37

Variant: LWB van Eng: 2.7 litre manual
Kerb mass: 1700 kg Category: VAN - LARGE
Vehicles built: 2006

Model History and Safety Features

The tested model of Toyota Hiace was introduced in Australia during 2005. This 4 star ANCAP applies to vehicles built from 17th September 2011 when improved driver knee protection was introduced.

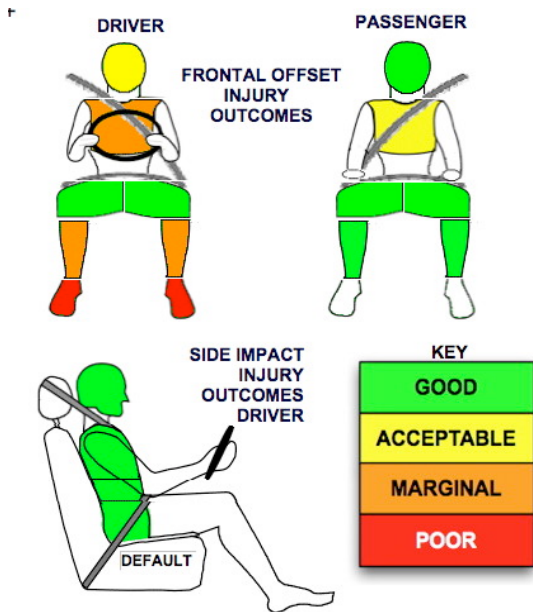
Dual front airbags are standard equipment in Australia and became standard for New Zealand models during May 2012. A separate 4 star rating is published for New Zealand models built before May 2012 which were fitted with a driver airbag only.

Antilock brakes (ABS) and emergency brake assist (EBA) are standard. Electronic stability control (ESC) is not available. Pretensioners are fitted to the front seat belts to reduce slack in the event of a crash.

OCCUPANT PROTECTION: 4 Stars

The upgraded Hiace scored 9.5 out of 16 in the offset crash test. The passenger compartment held its shape reasonably well. Protection from serious chest and leg injury was marginal for the driver. Foot protection was poor.

The vehicle was awarded a default score of 16 out of 16 in the side impact crash test.



Offset crash test at 64km/h

FRONTAL OFFSET CRASH TEST

Body region scores out of 4 points each: Head/neck 3 pts, chest 2.5 pts, upper legs 4 pts, lower legs zero pts.

The passenger compartment held its shape reasonably well, except for footwell deformation. The brake pedal moved rearwards by 260 mm and upwards 115 mm. The steering wheel hub moved rearwards 30 mm, upwards 144 mm and sideways 17 mm. The front ("A") pillar moved 81 mm rearwards. All doors remained closed during the crash. After the crash tools were required to open the driver's door.

The airbag cushioned the head of the driver and contact was stable. There were no knee hazards with the upgraded model. The passenger's head was cushioned by the airbag.

SIDE IMPACT CRASH TEST

Body region scores out of 4 points each: Head 4 pts, chest 4 pts, abdomen 4 pts, pelvis 4 pts.

The side impact test normally used by ANCAP simulates a small car striking the driver's door of the vehicle under test. It is based on a regulation test but the regulation does not apply to vehicles with a high seat height like the Hiace. Experience shows that such vehicles can be expected to perform well in this test so ANCAP has decided to award full score for these vehicles instead of conducting a crash test.

The vehicle was not eligible for a pole side impact test since it did not have head-protecting side airbags. This test can earn eligible vehicles an extra two points.

PEDESTRIAN PROTECTION: Poor

PEDESTRIAN PROTECTION	Child head impacts	1.53
POOR	Adult head impacts	5
	Upper leg impacts	Zero
	Lower leg impacts	Zero
	Total (out of 36)	6.53

v4.1

* Based on tests to a previous protocol. Scores might vary under the latest test protocol.

[no image of pedestrian protection available]

NOVEMBER 2011

PO Box 4041
Manuka ACT 2603
hiace11.doc
Revised 29/05/2017



ANCAP

Crash testing for safety

AUSTRALASIAN
NEW CAR ASSESSMENT
PROGRAM

TECHNICAL DATA - TOYOTA HIACE - From Sept 2011

INJURY MEASUREMENTS

Body region	Offset Crash Test at 64km/h (v4.1)		Side Impact Crash Test at 50km/h (v4.1)
	Driver	Passenger	Driver
Head HIC	403	274	Default score awarded
Acceleration (g for 3ms)	56.4	40.4	
Neck - Shear (kN)	0.36	0.92	
Tension (kN)	1.19	1.31	
Extension (Nm)	34.2	11.2	
Chest Accln (g for 3ms)	44.100	33.500	
Compression (mm)	32.50	26.30	
Viscous criterion (m/s)	0.20	0.10	
Abdomen - Force (kN)	-	-	
Pelvis - Force (kN)	-	-	
Upper legs Force (kN)			
Left	0.30	0.23	
Right	0.41	0.95	
Knee displ (mm)			
Left	0.48	3.91	
Right	0.04	0.67	
Lower legs Force (kN)			
Left	0.86	1.07	
Right	2.37	1.25	
Index (Upper/Low)			
Left	0.50 /0.36	0.28 /0.23	
Right	0.66 /0.62	0.31/0.22	

Bonus points (maximum 5)

Pole Test: Not eligible

Seat belt reminders: None (see table below for details)

Modifiers - deductions from offset test scores

Head	Steer wheel displacement	1 pt deduction
Chest		No deduction
Upper leg		No deduction
Lower leg	Pedal displacement	1 pt deduction
Foot score	Pedal displacement	Zero score

Note: Steering column and pedal movements are measured relative to the driver's seat.

Modifiers - deductions from side impact test scores

Default score awarded

Safety features

These specifications are subject to change. Please check with manufacturer for the latest specifications.

Driver airbag	S	Antilock (ABS) brakes / Electronic brake distribution / Brake Assist	S/X/S
Passenger front airbag	S*	Electronic stability control (ESC, VSC, DSC, ESP, VSA)	X#
Side airbags, front seats - chest protection	X	3 point centre rear seat belt	-
Side airbags, front seats - head protection	X	Whiplash rating	Not tested
Side airbags, rear seats - head protection	X	Intelligent seat belt reminder - driver	X
Driver knee airbag	X	Intelligent seat belt reminder - front passenger	X
Seat belt pretensioners (Front/rear outboard)	S/-	Intelligent seat belt reminder - rear seats	X

Key: NZ = New Zealand model

S = standard on all variants

O = optional on base variant. May be standard on higher variants

V= not available on base variant but standard or optional on higher variants

X = not available on any variant

ESC required by ANCAP for 5 star rating from 2008

* Standard in New Zealand models built from May 2012

