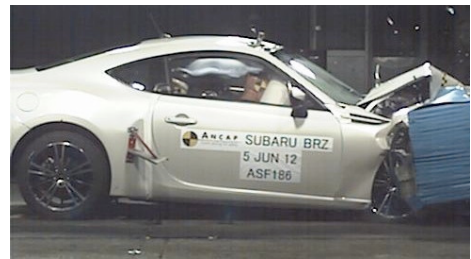


Crash Test Results

New Car Safety

SUBARU BRZ

From 2012 Front+side+head+knee airbags



Offset crash test at 64km/h



ANCAP Occupant Protection
Rated ★★★★★

Occupant Protection Score 34.40 out of 37

Variant: - Eng: 2 litre
Kerb mass: 1260kg Category: CAR - SPORTS
Vehicles built: 2012

Model History and Safety Features

The tested model of BRZ was introduced in Australia during 2012. Crash tests were conducted under ANCAP's niche vehicle policy.

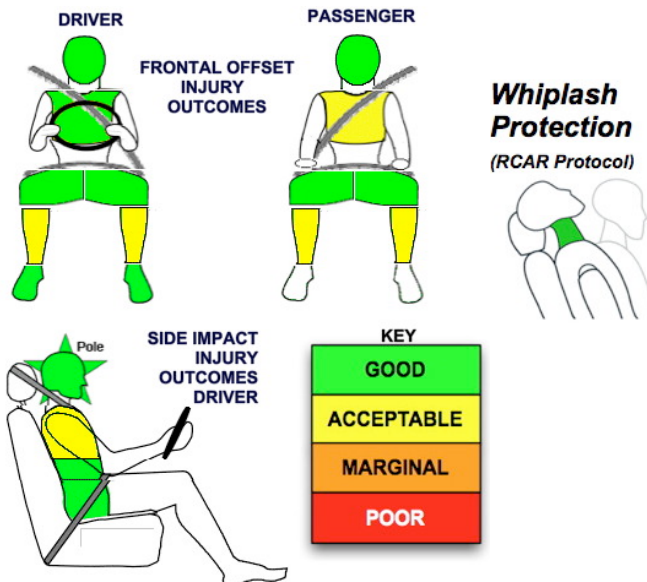
Dual front airbags, side airbags, head-protecting side curtains and a driver knee airbag are standard equipment. Antilock brakes (ABS), electronic brake distribution (EBD) and electronic stability control (ESC) are also standard. Advanced seat belt reminders are fitted to both front seats.

Pretensioners are fitted to the front seat belts to reduce slack in the event of a crash.

OCCUPANT PROTECTION: 5 Stars

The BRZ scored 14.97 out of 16 in the offset crash test. The passenger compartment held its shape well. There was a slight risk of serious chest injury for the passenger and a slight risk of serious leg injury for the driver and passenger.

The vehicle scored 15.43 out of 16 in the side impact crash test. There was a slight risk of serious chest injury for the driver.



FRONTAL OFFSET CRASH TEST

Body region scores out of 4 points each: Head/neck 4pts, chest 3.81pts, upper legs 4pts, lower legs 3.16pts.

The passenger compartment held its shape well in the offset crash test. The accelerator pedal moved rearwards by 72 mm and upwards 44 mm. The steering wheel hub moved 70mm forward, 5mm downward and 13 mm sideways. The front ("A") pillar moved 8mm forwards. All doors remained closed during the crash. After the crash the driver's door could be opened with normal effort.

The airbag cushioned the head of the driver and contact was stable. There were no knee hazards. The passenger's head was cushioned by the airbag.

SIDE IMPACT CRASH TEST

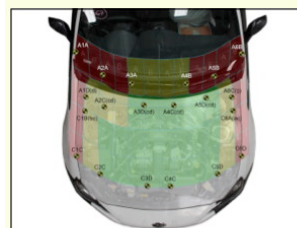
Body region scores out of 4 points each: Head 4pts, chest 3.43 pts, abdomen 4pts, pelvis 4pts.

The BRZ was eligible for a pole impact test, since it had head-protecting side airbags. The BRZ earned the maximum two points in this test

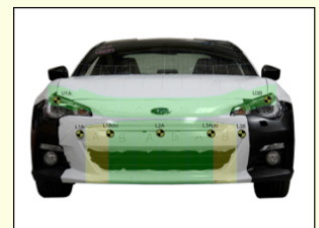
PEDESTRIAN PROTECTION: ACCEPTABLE

The majority of child zones on the bonnet performed well. The windscreen base could provide better protection to the adult head. Full points were awarded for the bonnet leading edge. The bumper mostly performed well.

PEDESTRIAN PROTECTION	Child head impacts	9.34
ACCEPTABLE v5.3	Adult head impacts	5.59
	Upper leg impacts	6.00
	Lower leg impacts	4.96
	Total (out of 36)	25.89



Child and adult head impact



Adult leg impact (upper and full legforms)

pass marginal fail

July 2012

PO Box 4041
Manuka ACT 2603
brz12.doc Rated: 2012
Issued: 2/7/2012



ANCAP
Crash testing for safety
AUSTRALASIAN
NEW CAR ASSESSMENT
PROGRAM

TECHNICAL DATA - SUBARU BRZ - From 2012

INJURY MEASUREMENTS

Body region	Offset Crash Test at 64km/h (v5.1)		Side Impact Crash Test at 50km/h (v5.1)
	Driver	Passenger	Driver
Head HIC	285	140	52
Acceleration (g for 3ms)	42.3	29.9	22.6
Neck - Shear (kN)	0.56	0.60	-
Tension (kN)	0.96	0.53	-
Extension (Nm)	11.7	23.9	-
Chest Accln (g for 3ms)	48.86	34.35	-
Compression (mm)	18.81	23.34	16.90
Viscous criterion (m/s)	0.05	0.10	0.11
Abdomen - Force (kN)	-	-	0.85
Pelvis - Force (kN)	-	-	2.60
Upper legs Force (kN)			
Left	2.34	0.39	
Right	1.99	0.88	
Knee displ (mm)			
Left	1.43	0.27	
Right	1.15	0.17	
Lower legs Force (kN)			
Left	2.55	2.36	
Right	2.81	2.15	
Index (Upper/Low)			
Left	0.49 /0.44	0.49 /0.51	
Right	0.40 /0.59	0.52/0.36	

Bonus points (maximum 5)

Pole Test: 2 pts

Seat belt reminders: 2 (see table below for details)

Modifiers - deductions from offset test scores

Head No deduction
 Chest No deduction
 Upper leg Variable & conc. loading No deduction
 Lower leg No deduction
 Foot score Score 4 points

Note: Steering column and pedal movements are measured relative to the driver's seat.

Modifiers - deductions from side impact test scores

Chest Backplate load 0.567pt deduction



Safety features

These specifications are subject to change. Please check with manufacturer for the latest specifications.

Driver airbag	S	Antilock (ABS) brakes / Electronic brake distribution / Brake Assist	S/S/S
Passenger front airbag	S	Electronic stability control (ESC, VSC, DSC, ESP, VSA)	S#
Side airbags, front seats - chest protection	S	3 point seat belt for all forward-facing seats	S
Side airbags, front seats - head protection	S	Whiplash rating (RCAR protocol)	Good
Side airbags, rear seats - head protection	S	Intelligent seat belt reminder - driver	S
Driver knee airbag	S	Intelligent seat belt reminder - front passenger	S
Seat belt pretensioners (Front/rear outboard)	S/X	Intelligent seat belt reminder - rear seats	X

Key:

S = standard on all variants

O = optional on base variant. May be standard on higher variants

V= not available on base variant but standard or optional on higher variants

X = not available on any variant

ESC required by ANCAP for 5 star rating from 2008