

Crash Test Results

New Car Safety

CITROEN BERLINGO (2 AIRBAGS)

From 2009

Dual front airbags*



ANCAP Occupant Protection
Rated ★★★★★

* Safety equipment, as tested, not standard in Australasia

Occupant Protection Score 27.20 out of 37

Variant: MPV

Eng: 1.6 diesel

Kerb mass 1480 kg

Category: VAN - SMALL

Vehicles built: 2008

Tested by Euro NCAP

Important note: The *diesel left-hand-drive* European model *with dual airbags* was tested by Euro NCAP. Australasian specifications may vary and therefore models sold in Australasia might provide different levels of protection to those described on this page.

Model History and Safety Features

The tested model of Citroen Berlingo was introduced in Australia and New Zealand during 2009.

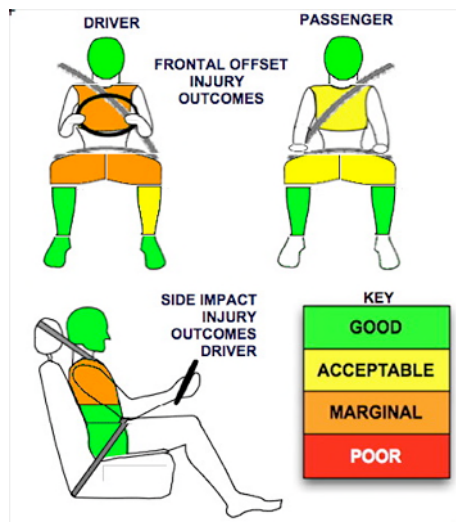
A driver airbag and antilock brakes (ABS) with electronic brakeforce distribution (EBD) and Emergency Brake Assist (EBA) are standard. A passenger airbag is optional in Australia and New Zealand and this ANCAP rating applies to models with this option. Side airbags and electronic stability control (ESC) are also optional. An intelligent seat belt reminder is fitted to the driver seat.

Pretensioners are fitted to the front seat belts to reduce slack in the event of a crash.

OCCUPANT PROTECTION: 4 Stars

The Berlingo scored 11.55 out of 16 in the offset crash test. The passenger compartment held its shape well. Protection from serious chest and leg injury was marginal for the driver.

The vehicle scored 14.65 out of 16 in the side impact crash test. There was a moderate risk of serious chest injury for the driver.



Offset crash test at 64km/h

FRONTAL OFFSET CRASH TEST

Body region scores out of 4 points each: Head/neck 2 pts, chest 2.57 pts, upper legs 2 pts, lower legs 2.98 pts.

The passenger compartment held its shape well in the offset crash test. The clutch pedal moved rearwards by 77 mm and upwards 9 mm. The steering wheel hub moved 28mm forward, 4mm downward and 2 mm sideways. The front ("A") pillar moved 23mm forwards. All doors remained closed during the crash. After the crash the driver's door could be opened with high manual effort.

The airbag cushioned the head of the driver and contact was stable. Steering column and dash components were a potential source of injury for the driver's knees. The passenger's head was cushioned by the airbag. Dash components were a knee hazard for the passenger.

SIDE IMPACT CRASH TEST

Body region scores out of 4 points each: Head 4.pts, chest 2.65 pts, abdomen 4 pts, pelvis 4 pts.

The vehicle was not eligible for an optional pole impact test because it lacked head-protecting side airbags.

PEDESTRIAN PROTECTION: Marginal*

The bonnet surface and its front edge were rated as predominantly poor for the protection they offered to the head and legs of a struck pedestrian.

PEDESTRIAN PROTECTION	Child head impacts	3.11
MARGINAL	Adult head impacts	Zero
	Upper leg impacts	1.84
	Lower leg impacts	4.88
	Total (out of 36)	9.83

Tested by Euro NCAP v4.2*

* Based on tests to a previous protocol. Scores might vary under the latest test protocol.



Green PASS
Yellow MARGINAL
Red FAIL

SEPTEMBER 2011

PO Box 4041

Manuka ACT 2603

berlingo09.doc

Issued 13/9/2011



ANCAP

Crash testing for safety

AUSTRALASIAN
NEW CAR ASSESSMENT
PROGRAM

TECHNICAL DATA - CITROEN BERLINGO - From 2009

INJURY MEASUREMENTS

Body region	Offset Crash Test at 64km/h (v4.2)		Side Impact Crash Test at 50km/h (v4.2)
	Driver	Passenger	Driver
Head HIC	164	235	103
Acceleration (g for 3ms)	31.4	38.6	50.5
Neck - Shear (kN)	0.22	0.44	-
Tension (kN)	1.22	0.78	-
Extension (Nm)	19.4	11.9	-
Chest Accln (g for 3ms)	-	-	-
Compression (mm)	32.00	28.80	9.58
Viscous criterion (m/s)	0.12	0.12	0.05
Abdomen - Force (kN)	-	-	0.380
Pelvis - Force (kN)	-	-	1.090
Upper legs Force (kN)			
Left	0.07	1.77	
Right	0.32	0.88	
Knee displ (mm)			
Left	0.00	0.00	
Right	0.00	0.00	
Lower legs Force (kN)			
Left	1.43	1.34	
Right	1.97	1.19	
Index (Upper/Low)			
Left	0.45 /0.63	0.23 /0.14	
Right	0.27 /0.37	0.36/0.13	

Bonus points (maximum 5)

Pole Test: Not eligible

Seat belt reminders: 1 (see table below for details)

Modifiers - deductions from offset test scores

Head	No deduction
Chest	No deduction
Upper leg Variable & conc. loading	Drv 2 pt deduction Left & Right Passn 1 pt deduction, L & R
Lower leg	No deduction
Foot score	Score 4 points

Modifiers - deductions from side impact test scores

Chest T12 spine load	1.35 pt deduction
----------------------	-------------------

Safety features

These specifications are subject to change. Please check with manufacturer for the latest specifications.

Driver airbag	S	Antilock (ABS) brakes / Electronic brake distribution / Brake Assist	S/S/X
Passenger front airbag	O ✓	Electronic stability control (ESC, VSC, DSC, ESP, VSA)	O#
Side airbags, front seats - chest protection	O	3 point centre rear seat belt	S
Side airbags, front seats - head protection	X	Whiplash protection	Not rated
Side airbags, rear seats - head protection	X	Intelligent seat belt reminder - driver	S
Driver knee airbag	X	Intelligent seat belt reminder - front passenger	X
Seat belt pretensioners (Front/Rear outboard)	S/X	Intelligent seat belt reminder - rear seats	X

Key: ✓ = Fitted to vehicle that was crash tested

S = standard on all variants

O = optional on base variant. May be standard on higher variants

V= not available on base variant but standard or optional on higher variants

X = not available on any variant

ESC required by ANCAP for 5 star rating from 2008

