

Crash Test Results

New Car Safety

PEUGEOT 207 (LHD)

2006 - 2012

Front+side+head airbags



Offset crash test at 64km/h



ANCAP

Rated ★★★★★

Occupant Protection

Occupant Protection Score 34.59 out of 37

Variant: Hatch

Eng: 1.4 litre

Kerb weight: 1160 kg

Category: SMALL CAR

Vehicles built: 2006

Important note: The *left-hand-drive* European model was tested by Euro NCAP. Australasian specifications may vary and therefore models sold in Australasia might provide different levels of protection to those described on this page. This assessment does not apply to the XR variant.

Model History and Safety Features

The tested model of Peugeot 207 was introduced in Australia during 2007.

Dual front airbags and antilock brakes (ABS) with electronic brake distribution (EBD) are standard. Side airbags and head-protecting side curtains are standard equipment on the XT, XE and GT variants but are not available on the XR variant. Electronic stability control (ESC) is only available on the XE and GT variants. Intelligent seat belt reminders are fitted to all seats of the XT, XE and GT variants.

The front seat belt buckles are mounted on the seats and the upper anchorages are adjustable. These features improve the fit of the seat belt. Pre-tensioners are fitted to the front seat belts to reduce slack in the event of a crash. A three point seat belt is fitted to the centre rear seat. This provides better protection than a two point (lap) seat belt.

OCCUPANT PROTECTION: 5 Stars

The Peugeot 207 scored 14.77 out of 16 in the offset crash test. The passenger compartment held its shape well. There was a slight risk of serious chest and leg injury for the driver. The vehicle scored 14.82 out of 16 in the side impact crash test. There was a slight risk of serious chest injury for the driver. A further 2 points were earned in the optional pole.

FRONTAL OFFSET CRASH TEST (v4.1)

Body region scores out of 4 points each: Head/neck 4 pts, chest 3.94 pts, upper legs 3 pts, lower legs 3.82 pts.

The passenger compartment held its shape well in the offset crash test. The clutch pedal moved rearwards by 37 mm and downwards 25mm. The steering wheel hub moved forwards 28mm, upwards 10 mm and sideways 4 mm. The front ("A") pillar moved 13 mm rearwards. All doors remained closed during the crash. After the crash high manual effort was required to open the driver's door.


The airbag cushioned the head of the driver and contact was stable. Steering column components were a potential source of injury for the driver's knees. The passenger's head was cushioned by the airbag.

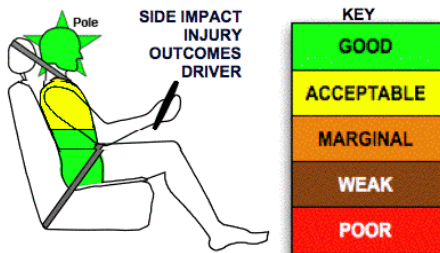
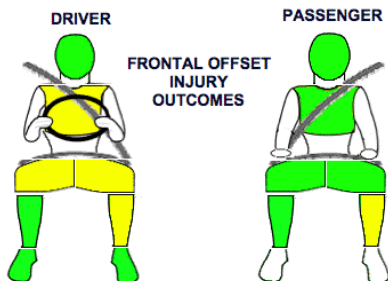
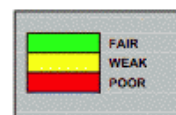
SIDE IMPACT CRASH TEST (v4.1)

Body region scores out of 4 points each: Head 4 pts, chest 2.82 pts, abdomen 4 pts, pelvis 4 pts.

The vehicle was eligible for an optional pole impact test, since it had head-protecting side airbags and scored four points for the head in the side impact test. The manufacturer decided to go ahead with the pole test and the vehicle earned a further two points.

PEDESTRIAN PROTECTION RATING (v4.1)

PEDESTRIAN PROTECTION		
 ANCAP Rated ★★☆☆	Child head impacts	4.37
	Adult head impacts	4
	Upper leg impacts	4.18
	Lower leg impacts	6
	Total (out of 36)	18.55



June 2007

PO Box 1555
Canberra ACT
Australia 2601
207_07.doc
Issued 6/6/07



ANCAP

Crash testing for safety
AUSTRALASIAN
NEW CAR ASSESSMENT
PROGRAM

www.ancap.com.au

TECHNICAL DATA - PEUGEOT 207 (LHD) - 2006 on

INJURY MEASUREMENTS

Body region	Offset Crash Test at 64km/h (v4.1)		Side Impact Crash Test at 50km/h (v4.1)
	Driver	Passenger	Driver
Head HIC	324	235	98
Acceleration (g for 3ms)	50.7	37.5	37.5
Neck - Shear (kN)	0.65	0.61	-
Tension (kN)	1.24	1.22	-
Extension (Nm)	4.6	6.4	-
Chest Accln (g for 3ms)	-	-	-
Compression (mm)	22.40	14.40	27.90
Viscous criterion (m/s)	0.08	0.05	0.17
Abdomen - Force (kN)	-	-	0.600
Pelvis - Force (kN)	-	-	1.740
Upper legs Force			
Left (kN)	0.23	0.29	
Right (kN)	0.00	0.56	
Knee displ (mm)			
Left	0.00	0.00	
Right	0.00	0.00	
Lower legs Force			
Left (kN)	1.97	2.06	
Right (kN)	1.62	1.77	
Index (Upper/Low)			
Left	0.44 /0.39	0.28 /0.19	
Right	0.40 /0.20	0.38/0.25	

Bonus points (maximum 5)

Pole Test: 2 pts

Seat belt reminders: 3 (see table below for details)

Modifiers - deductions from offset test scores

Head No deduction
 Chest No deduction
 Upper leg Variable & conc. loading 1 pt deduction Left & Right
 Lower leg No deduction
 Foot score Score 4 points
 Note: Steering column and pedal movements are measured relative to the driver's seat.



Modifiers - deductions from side impact test scores

Chest No deduction

Safety features

These specifications are subject to change. Please check with manufacturer for the latest specifications.

Driver airbag	S	Antilock (ABS) brakes / Electronic brake distribution	S/S
Passenger front airbag	S	Electronic stability control (ESC, VSC, DSC, ESP, VSA)	V
Side airbags, front seats - chest protection	V	3 point centre rear seat belt	S
Side airbags, front seats - head protection	V	Active head restraints - front seats	
Side airbags, rear seats - head protection	V	Intelligent seat belt reminder - driver	V
Driver knee airbag	X	Intelligent seat belt reminder - front passenger	V
Front seat belt pretensioners	S	Rear seat belt status indicator	V

Key:

S = standard on all variants

O = optional on base variant. May be standard on higher variants

V= not available on base variant but standard or optional on higher variants

X = not available on any variant