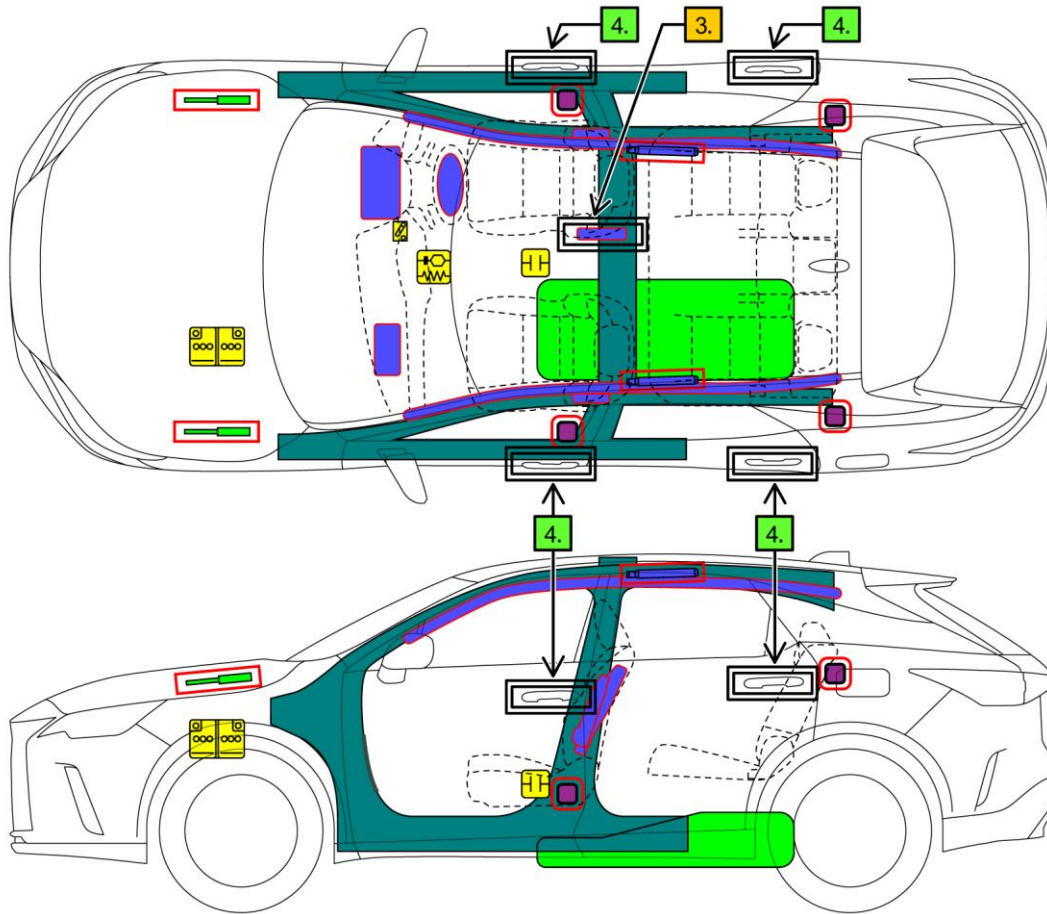
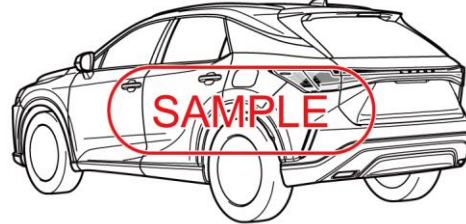
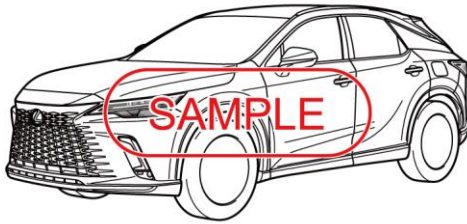




LEXUS RX350

2022-10



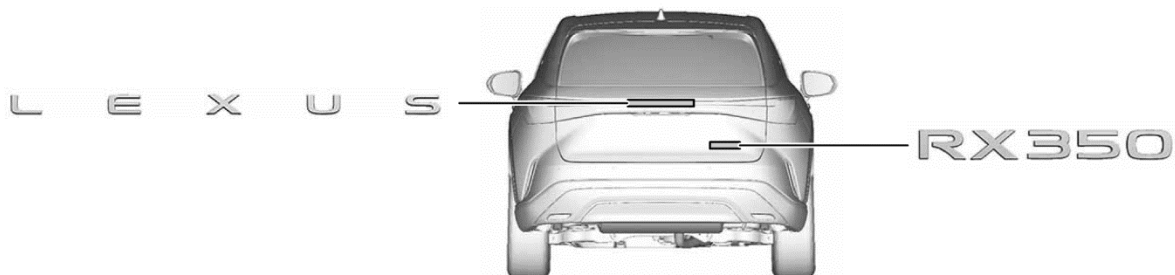
	Airbag		Stored gas inflator		Seat belt pretensioner		SRS control unit		Pedestrian protection active system
	Automatic rollover protection system		Gas strut / Preloaded spring		High strength zone		Zone requiring special attention		
	Battery low voltage		Ultra-capacitor, low-voltage		Fuel tank		Gas tank		Safety valve
	Battery pack, high-voltage		High voltage power cable / component		High voltage device that disconnects high voltage		Fuse box disabling high voltage		High voltage ultra-capacitor
	Low voltage device that disconnects high voltage		Device to shut down power in vehicle		Cable cut				
	ID No.	Version No.		Version date		Page			
	RX10	01		10 / 2022		1 / 4			

1. Identification / Recognition



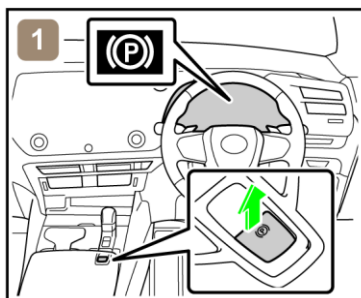
Lack of engine noise does not mean vehicle is off. Silent movement or instant restart capability exists until vehicle is fully shut down.

■ Location of vehicle badges

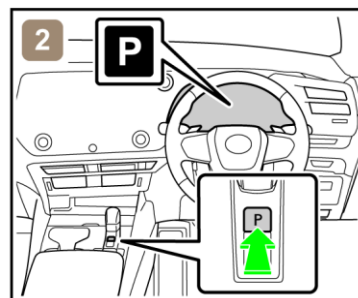


2. Immobilisation / Stabilisation / Lifting

■ Completely immobilize the vehicle



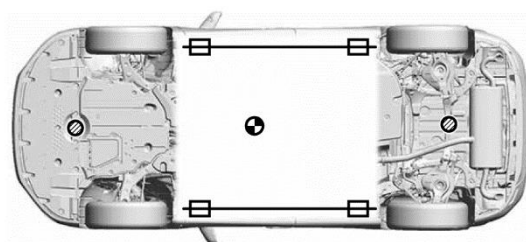
1) Check the wheels and engage the parking brake.



2) Press the P position switch.

■ Stabilisation-lifting point

Place cribbing such as wooden blocks at the four points under the front and rear pillars.



Extra Reinforced Lifting Points



Standard Jack Locations



Vehicle Center of Gravity



Do not place cribbing such as wooden blocks or rescue air lifting bags under the exhaust system or fuel system. Doing so may result in fuel leaks or fire.

	ID No.	Version No.	Version date	Page
	RX10	01	10 / 2022	2 / 4

3. Disable direct hazards / Safety regulations

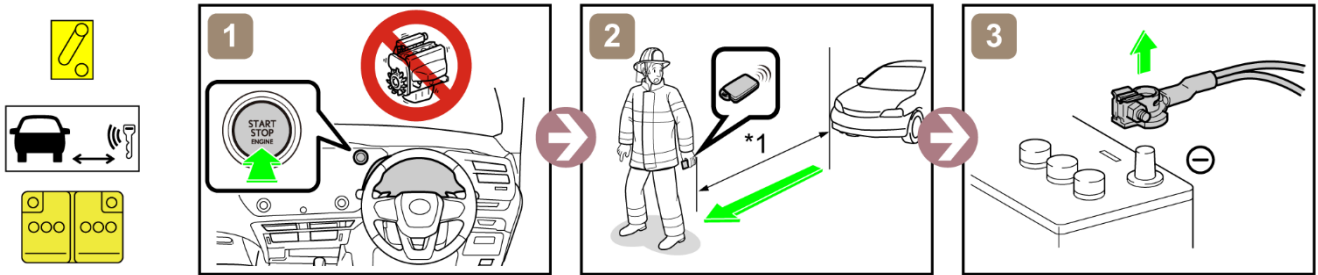
■ If any of the following systems are required to be operated, operate them **BEFORE** disconnecting the battery.

- | | | |
|------------------------------------|------------------------|------------------------|
| Power door lock | Power window | Power Back door |
| Moon roof | Panoramic moon roof | Power seat |
| Power tilt and telescopic steering | Electric parking brake | Electronic shift lever |

When the 12 V battery is disconnected, electrical components cannot be operated.

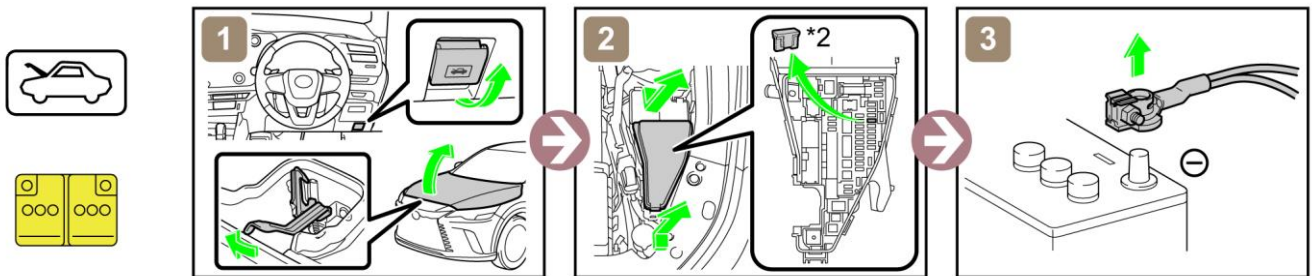
■ Perform procedure **Main** or **Alternative** to completely shut off the vehicle.

<Main Procedure>



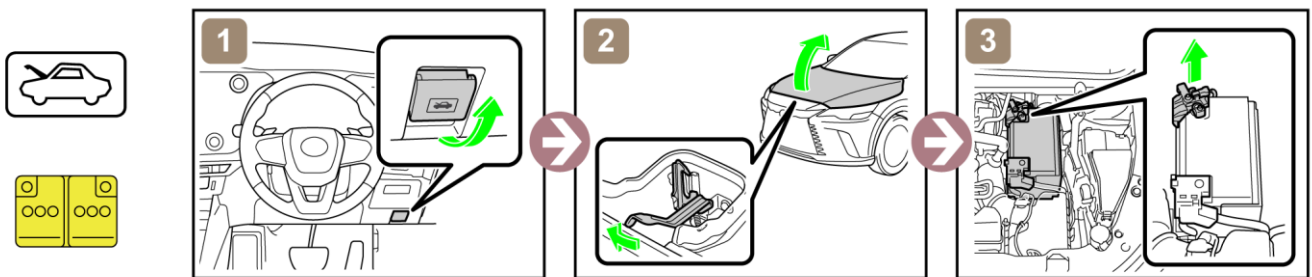
*1: 5 m (16.4 ft) or more

<Alternative Procedure>



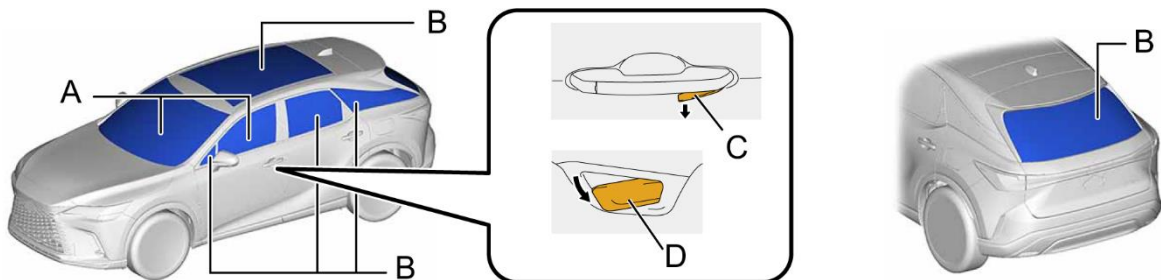
*2: IGP-MAIN NO. 1 FUSE (30 A GREEN)

■ Access to 12 V Battery



4. Access to the occupants

■ Window Glass



A	Laminated	B	Tempered
C	Outside Release Handle	D	Inside Release Handle (pull twice)

5. Stored energy / Liquids / Gases / Solids



12 V Battery



Gasoline Tank: 67.5 L



Always wear appropriate personal protective equipment (PPE) when dealing with any of these items.

6. In case of fire



RE-IGNITION POSSIBLE !

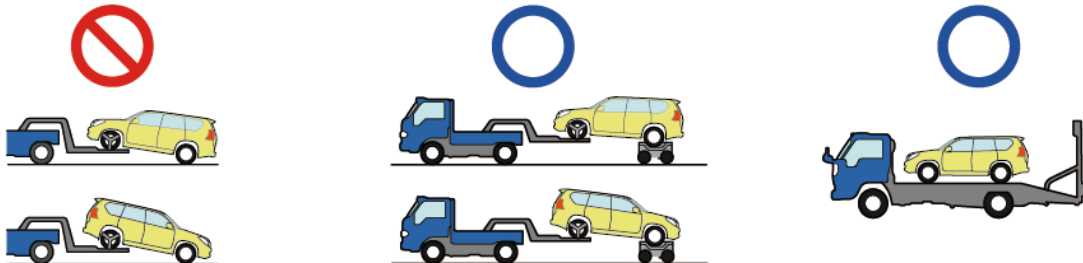


7. In case of submersion



Work on the vehicle only after the vehicle has been pulled out of the water.

8. Towing / Transportation / Storage



RE-IGNITION POSSIBLE !

Store the vehicle at a safe distance (15 m (49.2 ft) or more) from other vehicles.

9. Important additional information

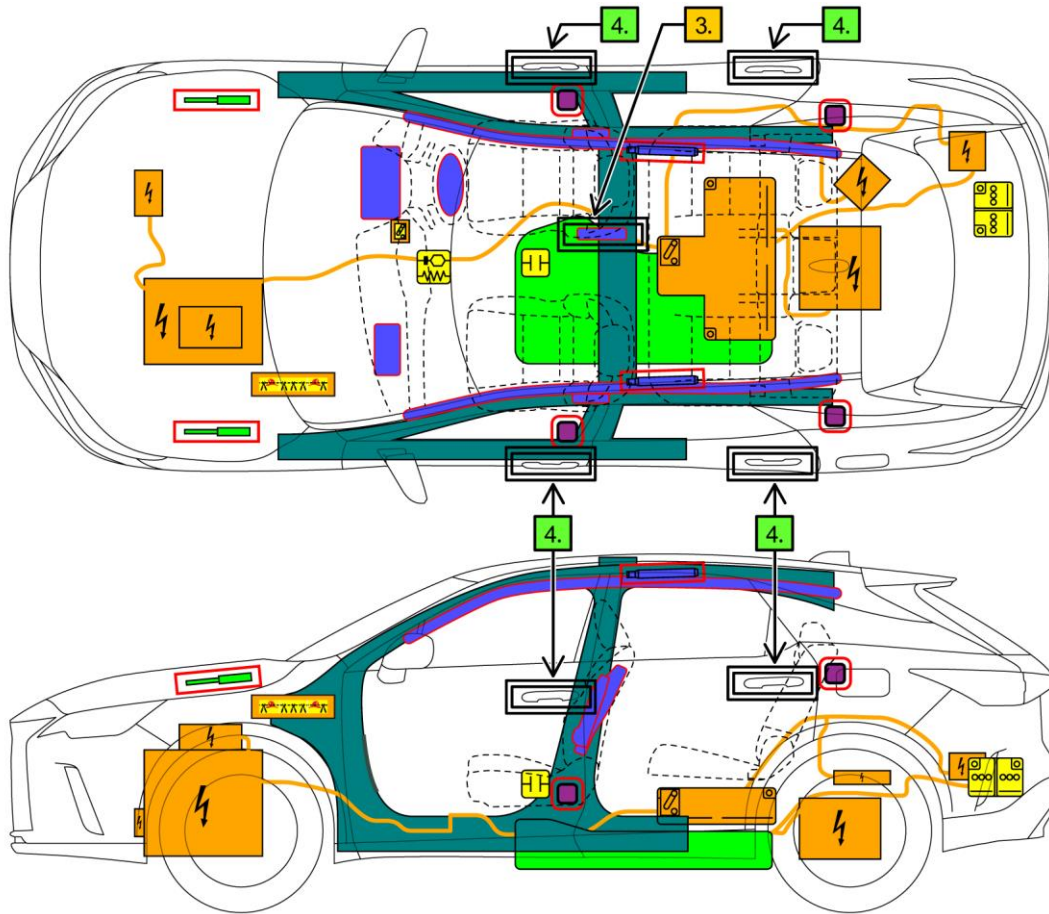
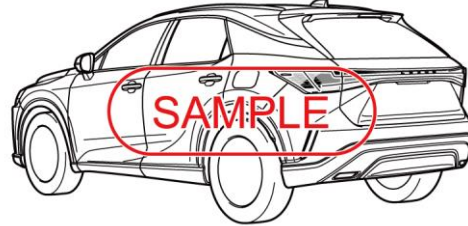
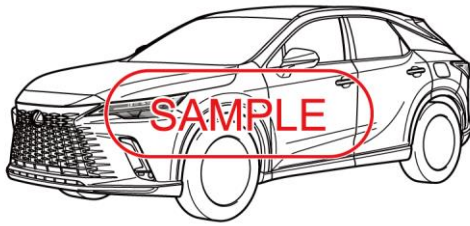
For further details, please refer to "Emergency Response Guide".

ID No.	Version No.	Version date	Page
RX10	01	10 / 2022	4 / 4



LEXUS RX350h/RX500h

2022-10



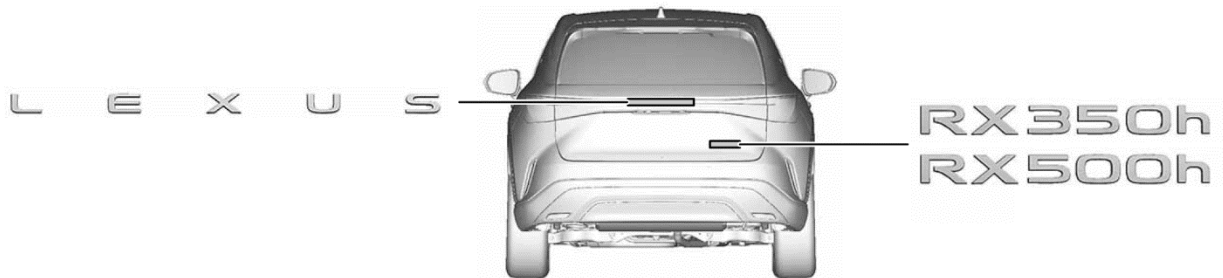
	Airbag		Stored gas inflator		Seat belt pretensioner		SRS control unit		Pedestrian protection active system
	Automatic rollover protection system		Gas strut / Preloaded spring		High strength zone		Zone requiring special attention		
	Battery low voltage		Ultra-capacitor, low-voltage		Fuel tank		Gas tank		Safety valve
	Battery pack, high-voltage		High voltage power cable / component		High voltage device that disconnects high voltage		Fuse box disabling high voltage		High voltage ultra-capacitor
	Low voltage device that disconnects high voltage		Device to shut down power in vehicle		Cable cut				
	ID No.	Version No.		Version date		Page			
	RXHV10	01		10 / 2022		1 / 4			

1. Identification / Recognition



Lack of engine noise does not mean vehicle is off. Silent movement or instant restart capability exists until vehicle is fully shut down.

■ Location of vehicle badges

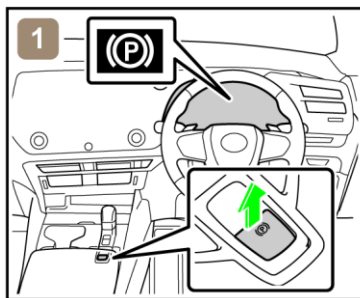


■ Energy source: Nickel metal hydride battery

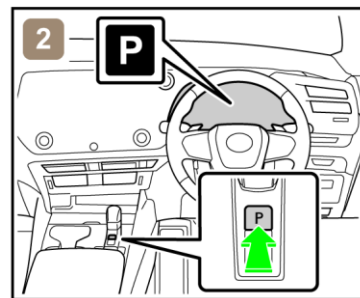


2. Immobilisation / Stabilisation / Lifting

■ Completely immobilize the vehicle



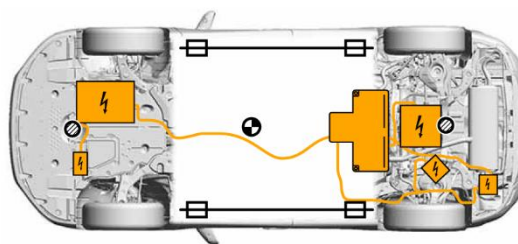
1) Chock the wheels and engage the parking brake.



2) Press the P position switch.

■ Stabilisation-lifting point

Place cribbing such as wooden blocks at the four points under the front and rear pillars.



Extra Reinforced Lifting Points



Standard Jack Locations



Vehicle Center of Gravity



Do not place cribbing such as wooden blocks or rescue air lifting bags under the exhaust system, fuel system or high voltage power cables. Doing so may result in fuel leaks, fire, or electric shock.

ID No.	Version No.	Version date	Page
RXHV10	01	10 / 2022	2 / 4

3. Disable direct hazards / Safety regulations

■ If any of the following systems are required to be operated, operate them **BEFORE** disconnecting the battery.

Power door lock

Power window

Power Back door

Moon roof

Panoramic moon roof

Power seat

Power tilt and telescopic steering

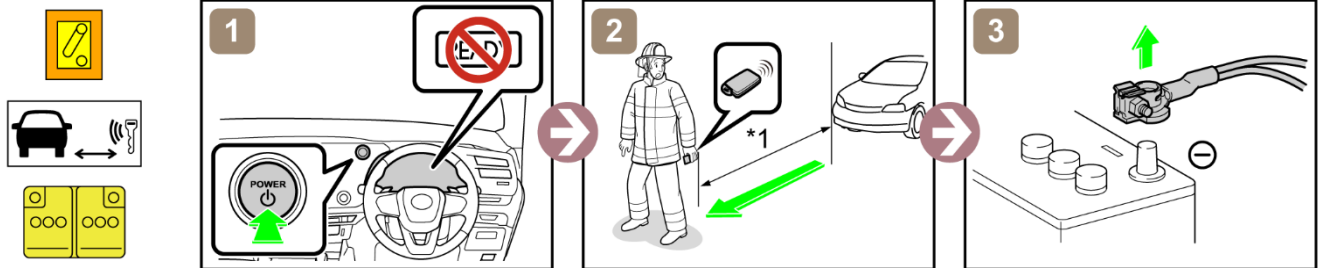
Electric parking brake

Electronic shift lever

When the 12 V battery is disconnected, electrical components cannot be operated.

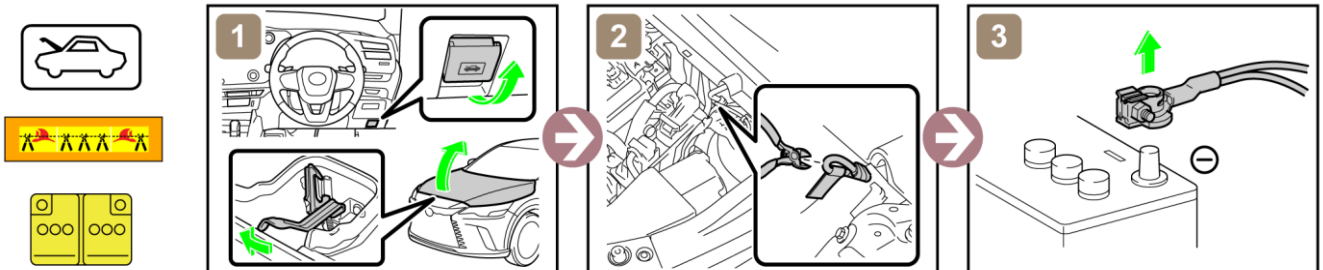
■ Perform procedure Main or Alternative to completely shut off the vehicle.

<Main Procedure>

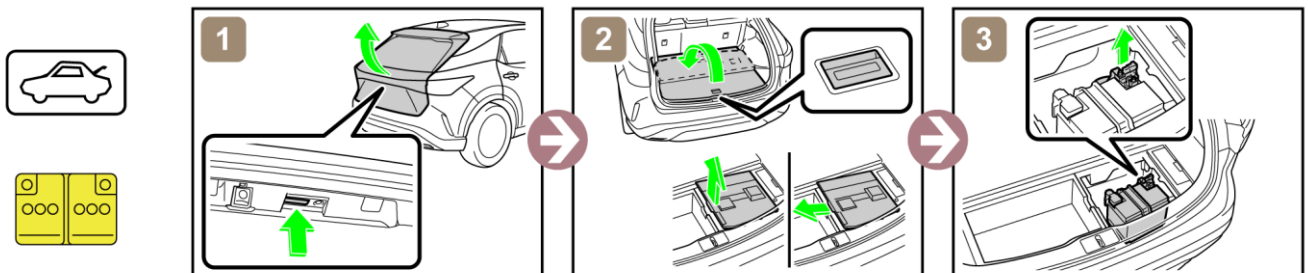


*1: 5 m (16.4 ft) or more

<Alternative Procedure>

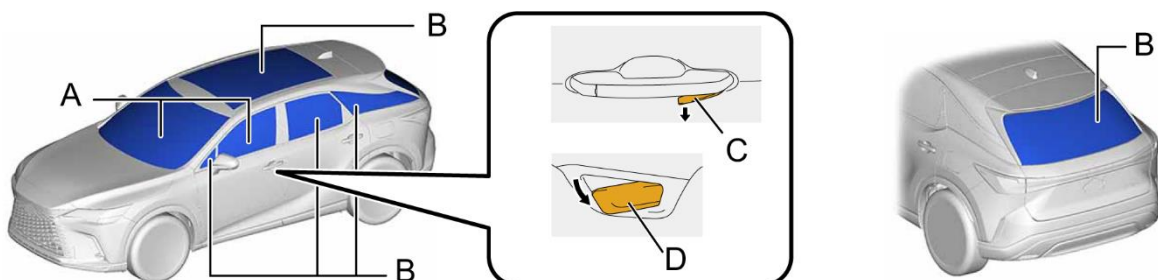


■ Access to 12 V Battery



4. Access to the occupants

■ Window Glass



A	Laminated	B	Tempered
C	Outside Release Handle	D	Inside Release Handle (pull twice)

5. Stored energy / Liquids / Gases / Solids



High Voltage Ni-MH Battery



12 V Battery



Gasoline Tank: 65 L



- Always wear appropriate personal protective equipment (PPE) when dealing with any of these items.
- Never breach or remove the battery assembly cover under any circumstances, including fire. Doing so may result in serious injury or death from severe burns or electric shock.

6. In case of fire



USE COPIOUS AMOUNTS OF WATER

If it is difficult to apply copious amounts of water to the high voltage battery, it is recommended to allow the high voltage battery to burn itself out.



RE-IGNITION POSSIBLE !

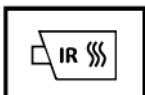
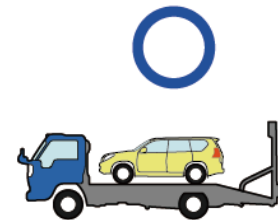


7. In case of submersion



Do not touch any of the high-voltage components or cables, including the service plug, while the vehicle is submerged. Doing so may result in electric shock.
Work on the vehicle only after the vehicle has been pulled out of the water.

8. Towing / Transportation / Storage



RE-IGNITION POSSIBLE !

Store the vehicle at a safe distance (15 m (49.2 ft) or more) from other vehicles.

9. Important additional information

For further details, please refer to "Emergency Response Guide".

ID No.	Version No.	Version date	Page
RXHV10	01	10 / 2022	4 / 4