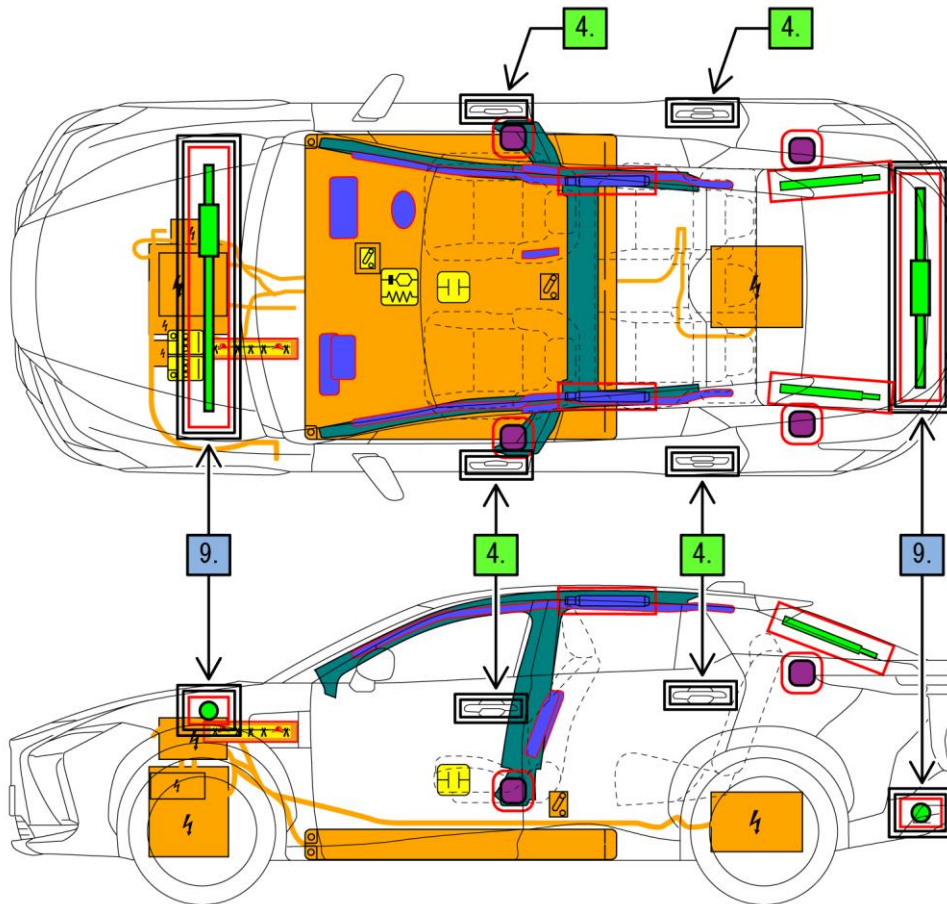
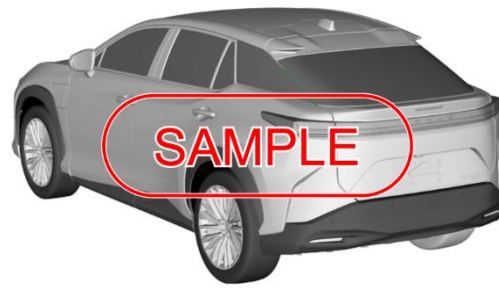
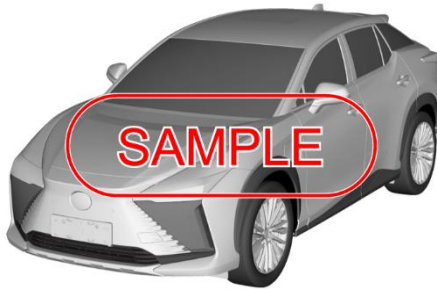




LEXUS RZ450e

5 doors / 5 seats / wagon
2023-1



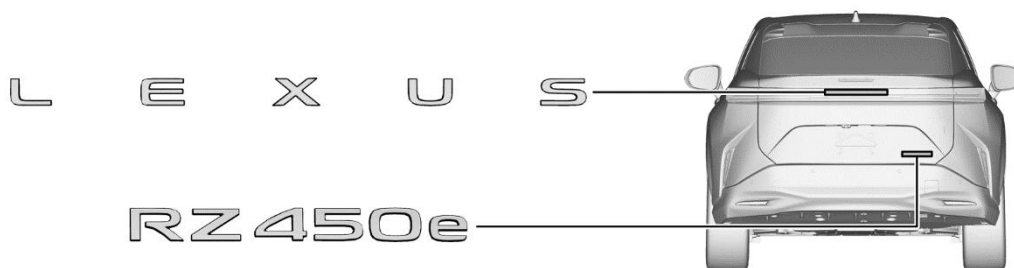
	Airbag		Stored gas inflator		Seat belt pretensioner		SRS control unit		Pedestrian protection active system
	Automatic rollover protection system		Gas strut / Preloaded spring		High strength zone		Zone requiring special attention		
	Battery low voltage		Ultra-capacitor, low-voltage		Fuel tank		Gas tank		Safety valve
	Battery pack, high-voltage		High voltage power cable / component		High voltage device that disconnects high voltage		Fuse box disabling high voltage		High voltage ultra-capacitor
	Low voltage device that disconnects high voltage		Device to shut down power in vehicle		Cable cut				
ID No.		Version No.		Version date		Page			
RZ15		01		01 / 2023		1 / 4			

1. Identification / Recognition



Silent movement or instant restart capability exists until vehicle is fully shut down.

Location of vehicle badges

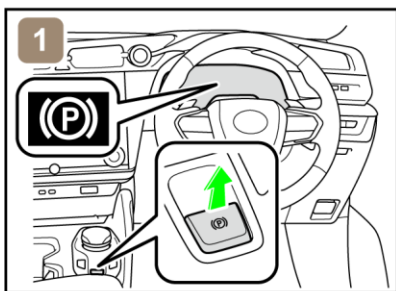


Energy source: Lithium-ion battery

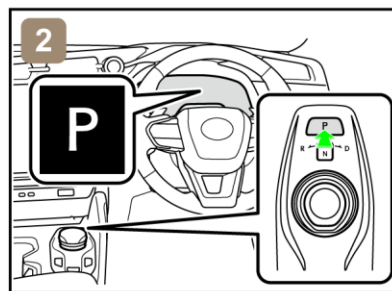


2. Immobilisation / Stabilisation / Lifting

Completely immobilize the vehicle



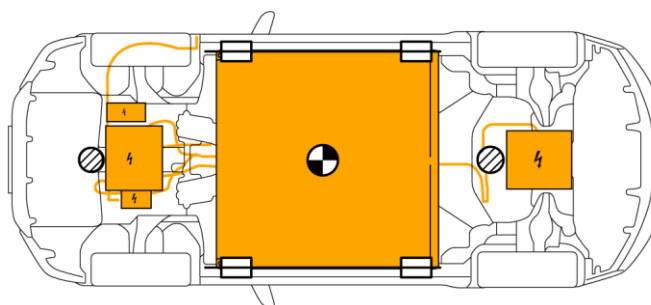
1) Chock the wheels and engage the parking brake.



2) Press the P position switch.

Stabilisation-lifting point

Place cribbing such as wooden blocks at the four points under the front and rear pillars.



Extra Reinforced Lifting Points



Standard Jack Locations



Vehicle Center of Gravity



Do not place cribbing such as wooden blocks or rescue air lifting bags under the high voltage power cables. Doing so may result in fire or electric shock.

ID No.	Version No.	Version date	Page
RZ15	01	01 / 2023	2 / 4

3. Disable direct hazards / Safety regulations

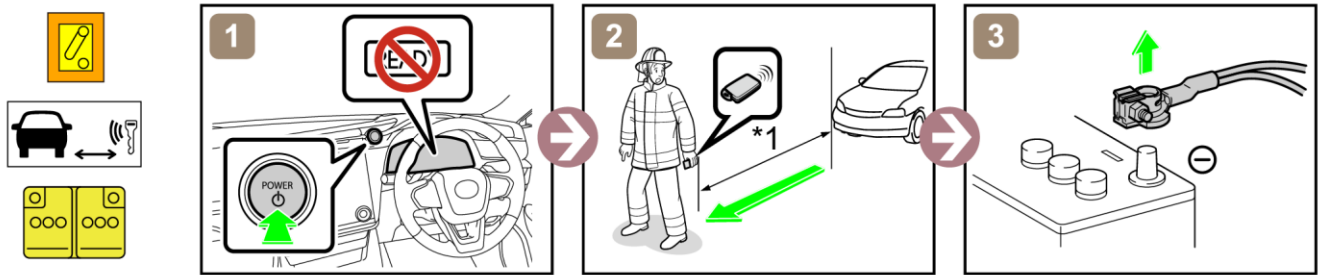
If any of the following systems are required to be operated, operate them BEFORE disconnecting the battery.

- Power door lock
- Power tilt and telescopic steering
- Electric shift lever
- Power window
- Electric parking brake
- Power seat
- Power Back Door

When the 12 V battery is disconnected, electrical components cannot be operated.

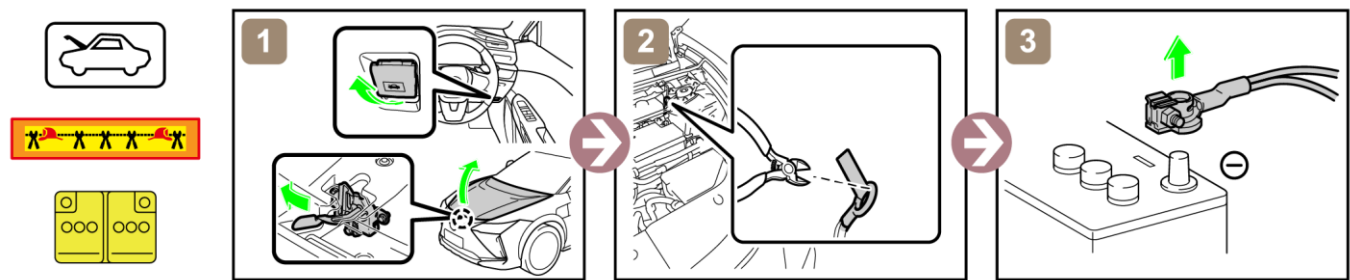
■ Perform procedure Main or Alternative to completely shut off the vehicle.

<Main Procedure>

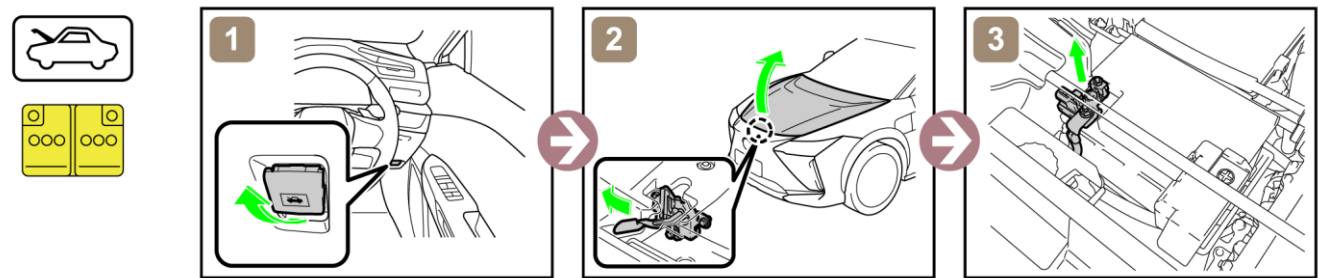


*1: 5 m (16.4 ft) or more

<Alternative Procedure>

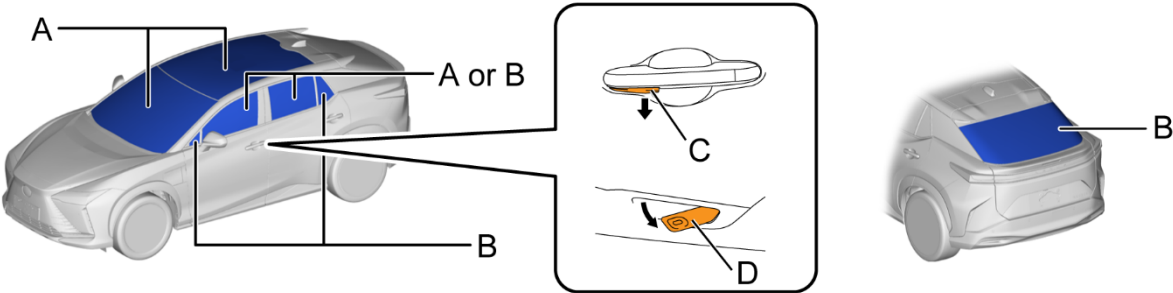


Access to 12 V Battery



4. Access to the occupants

Window Glass



A	Laminated	B	Tempered
C	Outside Release Handle	D	Inside Release Handle (pull twice)

5. Stored energy / Liquids / Gases / Solids



High Voltage Li-ion Battery



12 V Battery



- Always wear appropriate personal protective equipment (PPE) when dealing with any of these items.
- Never breach or remove the battery assembly cover under any circumstances, including fire. Doing so may result in serious injury or death from severe burns or electric shock.

6. In case of fire



USE COPIOUS AMOUNTS OF WATER

If it is difficult to apply copious amounts of water to the high voltage battery, it is recommended to allow the high voltage battery to burn itself out.



RE-IGNITION POSSIBLE !

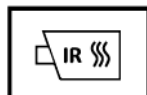
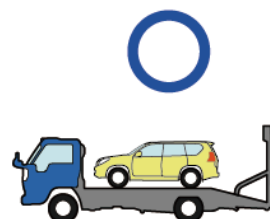
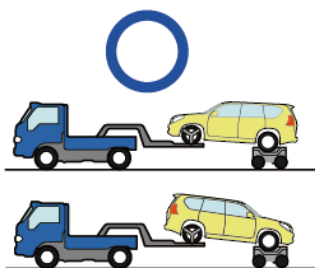
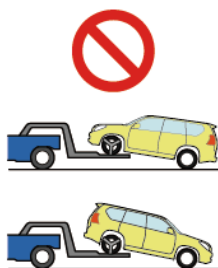


7. In case of submersion



Do not touch any of the high-voltage components or cables, including the service plug, while the vehicle is submerged. Doing so may result in electric shock.
Work on the vehicle only after the vehicle has been pulled out of the water.

8. Towing / Transportation / Storage



RE-IGNITION POSSIBLE !

Store the vehicle at a safe distance (15 m (49.2 ft) or more) from other vehicles.

9. Important additional information

Gas-filled dampers are installed in the front suspension tower and the rear lower structural frame (near the bumpers).

For further details, please refer to "Emergency Response Guide".

	ID No.	Version No.	Version date	Page
	RZ15	01	01 / 2023	4 / 4