

# Crash Test Results

## New Car Safety

### CITROEN DS3

From 2010 Front+side+head airbags



**ANCAP** Occupant Protection  
Rated ★★★★★

**Occupant Protection Score** 35.14 out of 37

Variants: 3 door hatch LHD Eng: 1.4 petrol

Kerb mass 1080 kg Category: CAR - SMALL

Vehicles built: 2009 Tested by Euro NCAP

**Important note:** The 1.4 litre left-hand-drive European model was tested by Euro NCAP. ANCAP was provided with information which showed that the results apply to all petrol 3-door hatch variants. The Cabrio (convertible) is unrated.

#### Model History and Safety Features

The tested model of Citroen DS3 was introduced in Australia and New Zealand during 2010.

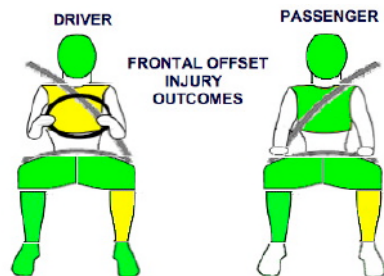
Dual front airbags, side airbags and head-protecting side curtains are standard equipment. Antilock brakes (ABS), electronic brakeforce distribution (EBD) and electronic stability control (ESC) are also standard. Intelligent seat belt reminders are fitted to both front seats.

Pretensioners are fitted to the front seat belts to reduce slack in the event of a crash.

#### OCCUPANT PROTECTION: 5 Stars

The Citroen DS3 scored 15.1 out of 16 in the offset crash test. The passenger compartment held its shape well. There was a slight risk of serious chest injury for the driver and slight risk of serious lower leg injury for the driver and passenger.

The vehicle scored 16 out of 16 in the side impact crash test and a further two points in the pole test.



FRONTAL OFFSET INJURY OUTCOMES



SIDE IMPACT INJURY OUTCOMES DRIVER



#### Whiplash Protection



Offset crash test at 64km/h

#### FRONTAL OFFSET CRASH TEST

Body region scores out of 4 points each: Head/neck 4 pts, chest 3.54 pts, upper legs 4 pts, lower legs 3.6 pts.

The passenger compartment held its shape well in the offset crash test. The clutch pedal moved rearwards by 27 mm. The accelerator pedal moved downwards 29mm. The steering wheel hub moved 3mm forward, 3mm downward and 7 mm sideways. The front ("A") pillar moved 27mm forwards. All doors remained closed during the crash. After the crash the driver's door could be opened with high manual effort.

The airbag cushioned the head of the driver and contact was stable. There were no knee hazards. The passenger's head was cushioned by the airbag.

#### SIDE IMPACT CRASH TEST

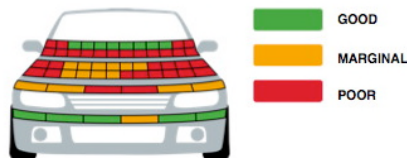
Body region scores out of 4 points each: Head 4 pts, chest 4 pts, abdomen 4 pts, pelvis 4 pts.

The vehicle was eligible for an optional pole impact test, since it had head-protecting side airbags. The vehicle earned the maximum two points in this test.

#### PEDESTRIAN PROTECTION: Marginal

In most areas likely to be struck by the head of a pedestrian, the bonnet provided poor protection and scored no points. The bumper provided predominantly good protection for pedestrians' legs.

PEDESTRIAN PROTECTION	Child head impacts	2.32
<b>MARGINAL</b>	Adult head impacts	4
	Upper leg impacts	0.34
	Lower leg impacts	5.89
	Total (out of 36)	12.56



NOVEMBER 2011

PO Box 4041

Manuka ACT 2603

ds3\_11.doc

Revised 24/7/2013



**ANCAP**

Crash testing for safety

AUSTRALASIAN  
NEW CAR ASSESSMENT  
PROGRAM

# TECHNICAL DATA - CITROEN DS3 - From 2010

## INJURY MEASUREMENTS

Body region	Offset Crash Test at 64km/h (v5.0)		Side Impact Crash Test at 50km/h (v5.1)
	Driver	Passenger	Driver
<b>Head HIC</b>	302	231	17
Acceleration (g for 3ms)	43.0	37.9	17.7
<b>Neck - Shear (kN)</b>	0.51	0.39	-
Tension (kN)	1.39	0.90	-
Extension (Nm)	17.1	19.7	-
<b>Chest Accln (g for 3ms)</b>	-	-	-
Compression (mm)	25.20	21.50	20.57
Viscous criterion (m/s)	0.12	0.05	0.11
<b>Abdomen - Force (kN)</b>	-	-	0.970
<b>Pelvis - Force (kN)</b>	-	-	2.890
<b>Upper legs Force (kN)</b>			
Left	0.14	0.30	
Right	0.04	0.20	
Knee displ (mm)			
Left	0.60	0.00	
Right	0.60	0.00	
<b>Lower legs Force (kN)</b>			
Left	1.86	1.51	
Right	1.69	1.02	
Index (Upper/Low)			
Left	0.49 /0.21	0.44 /0.30	
Right	0.37 /0.21	0.36/0.26	

### Bonus points (maximum 5)

Pole Test: 2 pts

Seat belt reminders: 2 (see table below for details)

### Modifiers - deductions from offset test scores

Head	No deduction
Chest	No deduction
Upper leg Variable & conc. loading	No deduction
Lower leg	No deduction
Foot score	Score 4 points

### Modifiers - deductions from side impact test scores

Chest	No deduction
-------	--------------

### Safety features

These specifications are subject to change. Please check with manufacturer for the latest specifications.



Driver airbag	S	Antilock (ABS) brakes / Electronic brake distribution / Brake Assist	S/S/S
Passenger front airbag	S	Electronic stability control (ESC, VSC, DSC, ESP, VSA)	S#
Side airbags, front seats - chest protection	S	3 point centre rear seat belt	S
Side airbags, front seats - head protection	S	Whiplash protection (RCAR protocol)	Acceptable
Side airbags, rear seats - head protection	S	Intelligent seat belt reminder - driver	S
Driver knee airbag	X	Intelligent seat belt reminder - front passenger	S
Seat belt pretensioners (Front/Rear outboard)	S/X	Intelligent seat belt reminder - rear seats	X

Key:

S = standard on all variants

O = optional on base variant. May be standard on higher variants

V= not available on base variant but standard or optional on higher variants

X = not available on any variant

# ESC required by ANCAP for 5 star rating from 2008