

# Crash Test Results

## New Car Safety

### SUBARU IMPREZA

From 2012 Front+side+head+knee airbags



Offset crash test at 64km/h



**ANCAP**

Rated ★★★★★

**Occupant Protection**

**Occupant Protection Score 35.33 out of 37**

Variant: Sedan

Eng: 2 litre

Kerb mass: 1350 kg

Category: CAR - SMALL

Vehicles built: 2011

#### Model History and Safety Features

The tested model of Subaru Impreza is being introduced in Australia and New Zealand during 2012. This ANCAP rating applies to all sedan and hatch variants.

Dual front airbags, side airbags, head-protecting side curtains and a driver knee airbag are standard equipment. Antilock brakes (ABS), electronic brake distribution (EBD) and electronic stability control (ESC) are also standard. Advanced seat belt reminders are fitted to all seats.

Pretensioners are fitted to the front seat belts to reduce slack in the event of a crash.

#### OCCUPANT PROTECTION: 5 Stars

The Subaru Impreza scored 14.328 out of 16 in the offset crash test. The passenger compartment held its shape well. There was a slight risk of serious chest and leg injury for the driver and passenger.

The vehicle scored 16 out of 16 in the side impact crash test and a further two points in the pole test.

#### FRONTAL OFFSET CRASH TEST

Body region scores out of 4 points each: Head/neck 4 pts, chest 3.44 pts, upper legs 4 pts, lower legs 2.89 pts.

The passenger compartment held its shape well in the offset crash test. The accelerator pedal moved rearwards by 85 mm and upwards 45 mm. The steering wheel hub moved 40mm forward, 12mm downward and 21 mm sideways. The front ("A") pillar moved 1 mm rearwards. All doors remained closed during the crash. After the crash the driver's door could be opened with normal effort.

The airbag cushioned the head of the driver and contact was stable. There were no knee hazards. The passenger's head was cushioned by the airbag.

#### SIDE IMPACT CRASH TEST

Body region scores out of 4 points each: Head 4 pts, chest 4 pts, abdomen 4 pts, pelvis 4 pts.

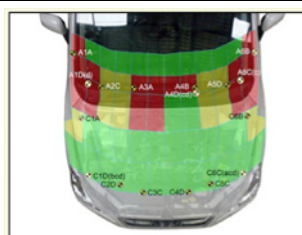
The vehicle was eligible for a pole impact test, since it had head-protecting side airbags. The vehicle earned the maximum two points in this test.

#### PEDESTRIAN PROTECTION: Acceptable

The bumper scored full points for its protection of pedestrians' legs. Upper leg scores were predominately poor. The bonnet provided good protection in the Child head impact area and the windscreen frame provided a generally mixed result for the Adult head area.

PEDESTRIAN PROTECTION	Child head impacts	11.6
<b>ACCEPTABLE</b>	Adult head impacts	6.36
	Upper leg impacts	1.18
	Lower leg impacts	6
	Total (out of 36)	25.14

v5.3

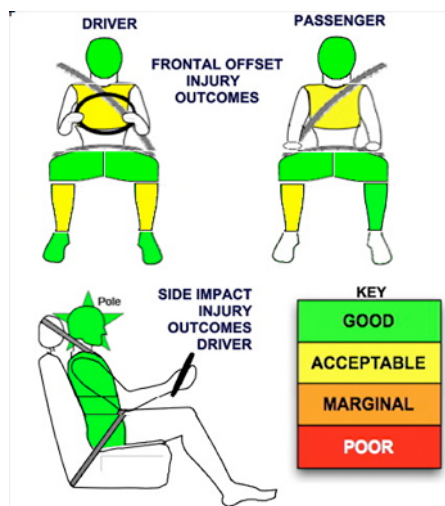


Child and adult head impact



Adult leg impact (upper and full legforms)

pass marginal fail



#### Whiplash Protection



**JANUARY 2012**

PO Box 4041

Manuka ACT 2603

impreza12.doc Rated:2012

Issued 19/1/2012



**ANCAP**

Crash testing for safety

AUSTRALASIAN  
NEW CAR ASSESSMENT  
PROGRAM

# TECHNICAL DATA - SUBARU IMPREZA - From 2012

## INJURY MEASUREMENTS

Body region	Offset Crash Test at 64km/h (v5.1)		Side Impact Crash Test at 50km/h (v5.1)
	Driver	Passenger	Driver
<b>Head</b> HIC	288	290	40
Acceleration (g for 3ms)	46.2	46.2	21.9
<b>Neck</b> - Shear (kN)	0.38	0.84	-
Tension (kN)	1.28	1.41	-
Extension (Nm)	17.3	21.6	-
<b>Chest</b> Accln (g for 3ms)	38.700	46.200	-
Compression (mm)	25.93	24.90	12.20
Viscous criterion (m/s)	0.08	0.12	0.11
<b>Abdomen</b> - Force (kN)	-	-	0.630
<b>Pelvis</b> - Force (kN)	-	-	1.620
<b>Upper legs</b> Force (kN)			
Left	1.34	1.13	
Right	1.26	1.70	
Knee displ (mm)			
Left	3.36	1.84	
Right	2.89	0.00	
<b>Lower legs</b> Force (kN)			
Left	2.28	1.72	
Right	3.36	1.99	
Index (Upper/Low)			
Left	0.34 /0.42	0.27 /0.26	
Right	0.40 /0.65	0.46/0.48	

### Bonus points (maximum 5)

Pole Test: 2 pts

Seat belt reminders: 3 (see table below for details)

### Modifiers - deductions from offset test scores

Head	No deduction
Chest	No deduction
Upper leg Variable & conc. loading	No deduction
Lower leg	No deduction
Foot score	Score 4 points

Note: Steering column and pedal movements are measured relative to the driver's seat.

### Modifiers - deductions from side impact test scores

Chest	No deduction
-------	--------------

### Safety features

These specifications are subject to change. Please check with manufacturer for the latest specifications.

Driver airbag	S	Antilock (ABS) brakes / Electronic brake distribution / Brake Assist	S/S/S
Passenger front airbag	S	Electronic stability control (ESC, VSC, DSC, ESP, VSA)	S#
Side airbags, front seats - chest protection	S	3 point seat belt for all forward-facing seats	S
Side airbags, front seats - head protection	S	Whiplash rating (RCAR protocol)	Good
Side airbags, rear seats - head protection	S	Intelligent seat belt reminder - driver	S
Driver knee airbag	S	Intelligent seat belt reminder - front passenger	S
Seat belt pretensioners (Front/rear outboard)	S/X	Intelligent seat belt reminder - rear seats	S

Key:

S = standard on all variants

O = optional on base variant. May be standard on higher variants

V= not available on base variant but standard or optional on higher variants

X = not available on any variant

# ESC required by ANCAP for 5 star rating from 2008

