

ANCAP Safety Rating

BMW X3 and iX3 (November 2017 – December 2023)



BMW X3

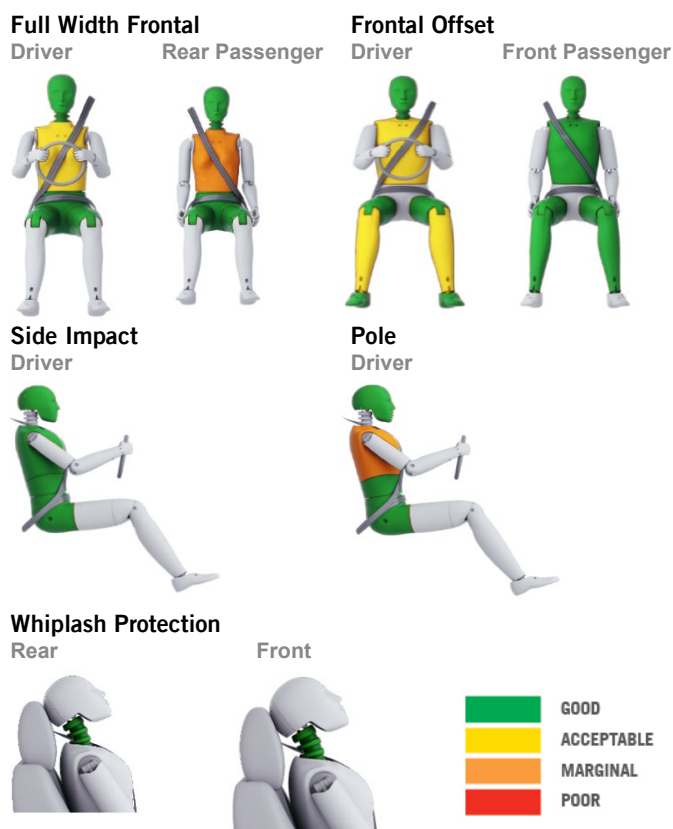
This ANCAP safety rating applies to:

Make / Model	BMW X3 and iX3
Year Range	November 2017 – December 2023
Variant(s)*	All variants except xDrive30e
Vehicle Type	Medium SUV

The tested model of BMW X3 was introduced in Australia and New Zealand in November 2017 with build dates commencing August 2017. This ANCAP safety rating applies to all petrol and diesel X3 variants and the full-electric iX3. Additional frontal offset and oblique pole tests were conducted on the electric iX3 to confirm integrity of the battery and safety of high voltage electrical systems. The xDrive30e PHEV is unrated.

Dual frontal, side chest, side head-protecting (curtain) and driver knee airbags are standard. Autonomous emergency braking (AEB) and a lane departure warning (LDW) system are also standard. A full list of safety features and technologies can be viewed within the *Safety Features & Technologies* table on page 2 of this report.

Injury Outcomes.



Test Results Summary.

Airbags	Dual Frontal, Side, Head, Knee
Adult Occupant Protection	93% (35.41 out of 38)
- Full Width Frontal Test [#]	7.34 (out of 8)
- Frontal Offset Test [#]	7.42 (out of 8)
- Side Impact Test [#]	8.00 (out of 8)
- Pole Test [#]	7.30 (out of 8)
- Whiplash Protection Test	2.36 (out of 3)
- AEB (City)	3.00 (out of 3)
Child Occupant Protection	84% (41.23 out of 49)
Safety Assist	58% (7.04 out of 12)
- Speed Assistance System	1.50 (out of 3)
- Seat Belt Reminders	3.00 (out of 3)
- Lane Support System	0.00 (out of 3)
- AEB (Interurban)	2.54 (out of 3)
Pedestrian Protection	70% (29.42 out of 42)
ANCAP Safety Rating	★★★★★
Rating Year[^]	2017

[#] Scaled scores. Total test score out of 16.00 points.

Adult Occupant Protection.

Full Width Frontal Test

Each body region is scored out of 4 points

Driver		Rear Passenger	
Head:	4.00 points	Head:	4.00 points
Neck:	4.00 points	Neck:	4.00 points
Chest:	3.02 points	Chest:	2.33 points
Upper legs:	4.00 points	Upper legs:	4.00 points

In the full width frontal test, chest protection of the driver was rated acceptable and that of the rear passenger was rated marginal. Good protection was offered to all other critical body regions.

Frontal Offset Test

Each body region is scored out of 4 points

Driver / Front Passenger (lesser of each)

Head / neck:	4.00 points
Chest:	2.98 points
Upper legs:	4.00 points
Lower legs:	3.86 points

The passenger compartment held its shape well in the frontal offset test. Good protection was offered to the head and upper legs of both the driver and passenger dummies and the chest of the passenger. Acceptable protection was offered to the driver's chest and lower legs. All doors remained closed during the test. After the test, all doors could be opened with normal effort.

Side Impact Test

Each body region is scored out of 4 points

Head:	4.00 points	Head:	4.00 points
Chest:	4.00 points	Chest:	2.59 points
Abdomen:	4.00 points	Abdomen:	4.00 points
Pelvis:	4.00 points	Pelvis:	4.00 points

Good protection was offered to all critical body regions of the driver in the side impact test. In the pole test, chest protection offered to the driver was rated marginal.

Whiplash Protection

Front / Rear:	1.61 points
Rear:	0.75 points
AEB (City):	3.00 points

ANCAP Safety Rating

BMW X3 and iX3 (November 2017 – December 2023)



Child Occupant Protection.

Crash Test Performance

6 year old child:	10.90 points
10 year old child:	11.33 points

In the frontal offset test, protection of the neck of the 10 year old dummy was rated as marginal. Otherwise, protection of both child dummies was good or adequate. In the side impact test, protection of both dummies was good for all critical body areas.

Child Safety Features & Child Seat Installation

Safety features:	7.00 points
Installation check:	12.00 points

NOTE: The child restraints tested by Euro NCAP are relevant to the European market. For Australasian consumers, this information should be used as a guide to vehicle features only. For more detailed information about Australian child restraints visit childcarseats.com.au.

Pedestrian Protection.

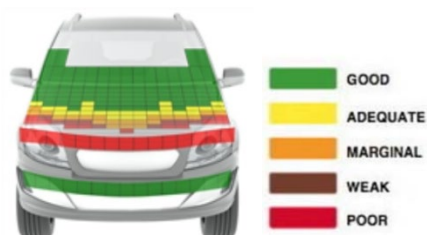
Pedestrian Test

Scored out of 42 points

Adult & child head impacts:	19.46 points
Upper leg impacts:	0.00 points
Lower leg impacts:	6.00 points
AEB (VRU):	3.95 points

This vehicle scored 29.42 out of 42 points. The X3 has an 'active', deployable bonnet. Sensors detect when a pedestrian has been struck and the bonnet lifts to provide greater clearance to the hard structures in the engine compartment. The X3 was tested with the bonnet in the raised position with results showing good or adequate protection over most of the bonnet surface. The protection provided to pedestrians' legs was good at all test locations, however the protection provided to the pelvis was poor at all locations.

The X3 is fitted with an autonomous emergency braking system capable of recognising and reacting to pedestrians. In tests of its effectiveness, the system performed adequately, with collisions avoided or mitigated in several test scenarios and speeds. (Tested by Euro NCAP v8.3)



Score Deductions.

Deductions from full width frontal test scores

Neck:	No deductions
Head:	No deductions
Chest:	No deductions
Upper legs / pelvis:	No deductions
Overall:	No deductions

Deductions from frontal offset test scores

Head / neck:	No deductions
Chest:	No deductions
Upper legs:	No deductions
Lower legs:	No deductions
Overall:	No deductions

Deductions from side impact test score

Overall:	No deductions
----------	---------------

Deductions from pole test score

Overall:	No deductions
----------	---------------

Safety Features & Technologies.

Descriptions of each of these safety features and safety assist technologies (SAT) and detail on fitting requirements for each star rating level can be found at ancap.com.au.

Safety Feature / Safety Assist Technology	Availability
Seat belts (three-point, lap / sash) for all forward-facing seats	S
Seat belt pretensioners (front)	S
Seat belt pretensioners (rear outboard)	S
Intelligent seat belt reminder (driver)	S
Intelligent seat belt reminder (front passenger)	S
Intelligent seat belt reminder (2 nd row seats)	S
Airbag - Frontal (driver)	S
Airbag - Frontal (passenger)	S
Airbag - Side, chest protection (front seats)	S
Airbag - Side, chest protection (2 nd row seats)	X
Airbag - Side, head protection (front seats)	S
Airbag - Side, head protection (2 nd row seats)	S
Airbag - Knee (driver)	S
Airbag - Knee (front passenger)	X
Head restraints for all seats	S
Active bonnet	S
Adaptive cruise control (ACC)	O (NZ = S)
Antilock braking system (ABS)	S
Autonomous emergency braking (AEB)	
- City	S
- Interurban	S
- Vulnerable road user	S
Automatic headlights	S
Automatic high beam	O (NZ = S)
Automatic emergency call (eCall)	S
Blind spot monitoring (BSM)	S
Electronic brakeforce distribution (EBD)	S
Electronic stability control (ESC)	S
Emergency brake assist (EBA)	S
Emergency stop signal (ESS)	S
Forward collision warning (FCW)	S
Fatigue detection	S
Lane departure warning (LDW)	S
Lane keep assist (LKA)	O (NZ = S)
Daytime running lights (DRL)	S
Hill launch assist	S
Pre-crash systems	S
Reversing collision avoidance	S
Speed assistance – automatic / intelligent speed limiting (ISA)	S
Speed assistance - manual speed limiting	S
Speed assistance - speed sign recognition & warning	S
Tyre pressure monitoring system (TPMS)	S

S = Standard on all variants.

O = Optional on base variant. May be standard on higher variants.

V = Not available on base variant but standard or optional on higher variants.

X = Not available on any variant.

E = Available in Europe but not available on any Australasian variant.

These specifications are subject to change. Please check with the manufacturer for the latest specifications.

ANCAP Safety Rating

BMW X3 and iX3 (November 2017 – December 2023)



Safety Assist.

Speed Assistance System (SAS)

Scored 1.50 out of 3 points

Speed information:	[Not tested]
Speed assistance (manual):	1.50
Speed assistance (automatic / intelligent):	[Not tested]

AEB (Interurban)

Scored 2.54 out of 3 points

Autonomous emergency braking (AEB):	1.36 out of 1.5
Forward collision warning (FCW):	0.92 out of 1.0
Human machine interface (HMI):	0.25 out of 0.5

Seat Belt Reminder (SBR)

Scored 3.00 out of 3 points

Driver and passenger:	2.00 out of 2.00
Rear:	1.00 out of 1.00

Lane Support Systems (LSS)

Scored 0.00 out of 3 points

A lane departure warning (LDW) system is fitted as standard to Australian and New Zealand variants. A lane keep assist (LKA) system is standard in New Zealand and available as an option in Australia. As these systems were not available as standard on the tested European variant, these systems have not been assessed.

Approaching a stationary vehicle:

16.97 out of 18.00 points for Forward Collision Warning (FCW)



Approaching a slow moving vehicle:

11.00 out of 11.00 points for Autonomous Emergency Braking (AEB)



Approaching a braking vehicle with short headway:

1.27 out of 2.00 points for AEB, 1.30 out of 2.00 points for FCW



Approaching a braking vehicle with long headway:

2.00 out of 2.00 points for AEB, 2.00 out of 2.00 points for FCW



ANCAP Safety Rating

BMW X3 and iX3 (November 2017 – December 2023)



Injury Values & Measurements.

Body Region	Frontal offset test at 64km/h (v7.1)		Full width frontal test at 50km/h (v1.0)		Side impact test at 50km/h (v7.1)	Oblique pole test at 32km/h (v7.0)
	Driver	Front Passenger	Driver	Rear Passenger	Driver	Driver
Head						
HIC	157	179	162	174	37	245
Acceleration (g for 3ms)	41.80	45.20	44.31	43.08	23.50	50.89
Neck						
Shear (kN)	0.65	0.37	0.29	0.82	-	-
Tension (kN)	1.09	0.55	1.14	1.28	-	-
Extension (Nm)	8.20	22.70	19.28	11.76	-	-
Chest						
Acceleration (g for 3ms)	-	-	-	-	-	-
Compression (mm)	27.11	21.16	23.86	28.03	11.99	35.75
Viscous criterion (m/s)	0.14	0.05	0.20	0.14	0.05	0.31
Abdomen						
Compression (mm)	-	-	-	-	8.86	30.78
Pelvis						
Force (kN)	-	-	-	-	0.67	-
Upper legs						
Femur force left (kN)	0.59	0.31	0.61	0.13	-	-
Femur force right (kN)	0.84	0.27	0.00	0.00	-	-
Knee displacement left (mm)	0.85	0.96	3.14	1.04	-	-
Knee displacement right (mm)	1.62	0.00	0.26	0.15	-	-
Lower legs						
Force left (kN)	2.19	1.67	-	-	-	-
Force right (kN)	2.21	1.80	-	-	-	-
Index (upper / lower) left	0.34 / 0.35	0.36 / 0.19	-	-	-	-
Index (upper / lower) right	0.25 / 0.20	0.37 / 0.20	-	-	-	-
Intrusion Measurements						
Steering column						
Forward (mm)	65	-	-28	-	-	-
Upward (mm)	-26	-	-8	-	-	-
Sideways (mm)	0	-	1	-	-	-
Pedals						
Brake - rearward (mm)	12	-	-	-	-	-
Brake - upward (mm)	0	-	-	-	-	-
A-Pillar						
Rearward (mm)	2	-	-	-	-	-

* **Model Variants:** ANCAP safety ratings do not automatically extend to variants that have different body styles, engine configurations, driven wheels or occupant restraint systems (e.g. fewer airbags). In these cases, ANCAP considers technical evidence submitted by manufacturers before deciding on extending a rating to additional variants of a model. For further information about the application of ANCAP safety ratings to model variants, see the ANCAP Variant Policy.

^ **Rating Year:** The Rating Year denotes the year requirements against which a vehicle has been assessed. The Rating Year is determined by ANCAP and may be based on the year in which a new vehicle model is first launched into the Australian and/or New Zealand markets; the year in which the vehicle was tested (if tested by Euro NCAP); or, for vehicles which hold an existing ANCAP safety rating, the year in which the rating was updated (or earlier applicable year).

Assessment Details.

Tested Make / Model	BMW X3 xDrive20d
Tested Vehicle(s) Built	2017
Tested Body Type	Wagon
Tested Vehicle Kerb Weight	1825 kg
Tested Vehicle Engine	2.0 litre diesel 4x4
Tested By	Euro NCAP
Assessed By	Euro NCAP
Document Reference	X3_17
Document Created	28 November 2017
Rating Published	November 2017
Rating Updated	December 2017 / June 2021 / June 2022



Frontal offset test at 64km/h