

# Crash Tests

## New Car Safety

### Honda Odyssey

07/2005 on 12/2009 - Frontal+Side+Head

#### Overall Evaluation



**Overall Score**  
Variant: Luxury

**27.5 out of 37**  
Engine: 2.4 Litre  
Category: MPV

#### Model History and Safety Features

The tested model of Honda Odyssey was introduced in Australia during 2005.

Dual front airbags, side airbags and ABS/EBD brakes are standard equipment on both variants. Head-protecting side curtains are standard on the Luxury variant. Electronic stability control is not available.

The front seat belt buckles are mounted on the seats and the upper anchorages are adjustable. These features improve the fit of the seat belt. Pre-tensioners are fitted to the front seat belts to reduce slack in the event of a crash. A three point seat belt is fitted to the centre rear seat. This provides better protection than a two point seat belt.

#### Overall Evaluation: 4

The Odyssey scored 11.5 out of 16 in the offset crash test. The passenger compartment held its shape well. Protection from serious leg injury was marginal for the driver. There was a slight risk of serious head and chest injury for the driver and a slight risk of serious chest and leg injury for the passenger.

The vehicle scored 16 out of 16 in the side impact crash test.

#### Frontal Offset Crash Test

Body region scores out of 4 points each: Head/neck 3.94 pts, chest 3.97 pts, upper legs 2 pts, lower legs 1.60 pts.

The passenger compartment held its shape well in the offset crash test. The park brake pedal moved rearwards by 116 mm and upwards 87 mm. The steering wheel hub moved rearwards 28 mm, upwards 73 mm and sideways 27 mm. The front ("A") pillar moved 19 mm rearwards. All doors remained closed during the crash. After the crash all doors opened with normal effort.

The airbag cushioned the head of the driver and contact was stable. Steering column components were a potential source of injury for the driver's knees. The passenger's head was cushioned by the airbag. Metal brackets at each end of the dash were potential sources of knee injury for both the driver and passenger.

#### Side Impact Crash Test

Body region scores out of 4 points each: Head 4 pts, chest 4 pts, abdomen 4 pts, pelvis 4 pts.

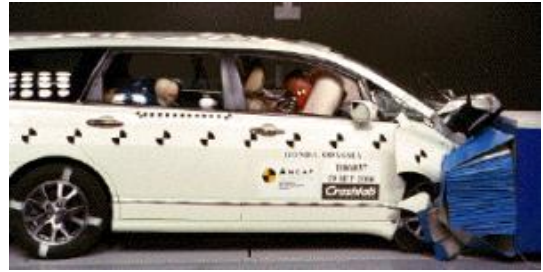
The vehicle was eligible for a pole test but the manufacturer decided not to go ahead with this test, which can earn a further two points.

#### Pedestrian rating (v4.1)



Child head impacts	7.05
Adult head impacts	5.00
Upper leg impacts	Zero
Lower leg impacts	6.00
Total (out of 36)	18.05

Offset crash test at 64km/hr



#### Injury Measurements

Refer to the information sheet 'How the tests are done'	Offset Crash Test at 64km/h (v4.1)		Side Impact Crash Test aa 50km/h (v4.1) Driver
	Driver	Passn	
<b>Head</b>			
- HIC	257	363	38
- Acceleration (g for 3ms)	45.5	49.5	20.7
<b>Neck</b>			
- Shear (kN)	0.8	0.37	
- Tension (kN)	1.37	0.6	
- Extension (Nm)	29.7	16.6	
<b>Chest</b>			
- Acceleration (g for 3ms)	43	32.6	
- Compression (mm)	22.1	22.2	10.7
- Viscous Criterion (m/s)	0.08	0.08	0.04
<b>Abdomen</b>			
- Force (kN)			0.28
<b>Pelvis</b>			
- Force (kN)			1.86
<b>Upper Legs Force (kN)</b>			
- Left	1.16	0.04	
- Right	0.2	3.23	
<b>Knee Displacement (kN)</b>			
- Left	0.04	1.87	
- Right	0.35	6.58	
<b>Lower Legs Force (kN)</b>			
- Left	4.14	2.27	
- Right	1.41	0.9	
<b>Index (Upper   Lower)</b>			
- Left	0.7   0.2	0.32   0.12	
- Right	0.26   0.73	0.36   0.19	

#### Bonus points (maximum 5)

Pole Test: Not tested - zero points

Seat Belt Reminders: None fitted - zero points

#### Modifiers for offset test scores

Head	Steering column upward movement	0.06 deduction
Chest		No deduction
Upper leg	Variable & conc loading	2 pt deduction L D, 1 pt deduction R D & L P
Lower leg	Park brake upward movement	0.94 pt deduction
Foot score	Park brake rearward movement	Score 3.38 pts
Structure		

#### Modifiers for side impact test scores

Head	
Chest	No deduction
Upper leg	
Lower leg	
Foot score	
Structure	



Version 1, Published on: 21/12/2006  
Published by  
New Car Assessment Program  
PO Box 1555  
Canberra ACT Australia 2601