

Crash Test Results

New Car Safety

HYUNDAI ACCENT

From Aug 2011 Front+side+head airbags



Offset crash test at 64km/h

FRONTAL OFFSET CRASH TEST

Body region scores out of 4 points each: Head/neck 4 pts, chest 3.46 pts, upper legs 4 pts, lower legs 3.2 pts.

The passenger compartment held its shape well in the offset crash test. The brake pedal moved rearwards by 61 mm. The throttle pedal moved downwards 5mm. The steering wheel hub moved 40mm forward, 31 mm upward and 5 mm sideways. The front ("A") pillar moved 17 mm rearwards. All doors remained closed during the crash. After the crash all doors could be opened with normal effort.

The airbag cushioned the head of the driver and contact was stable. There were no knee hazards. The passenger's head was cushioned by the airbag.

SIDE IMPACT CRASH TEST

Body region scores out of 4 points each: Head 4 pts, chest 4 pts, abdomen 4 pts, pelvis 4 pts.

The vehicle scored the maximum two points in the pole test.

PEDESTRIAN PROTECTION: ACCEPTABLE

The Accent achieved a good result for all the full leg tests and most of the child head impact area. The windscreen frame produced a poor result.

PEDESTRIAN PROTECTION		
ACCEPTABLE	Child head impacts	9.36
	Adult head impacts	4
	Upper leg impacts	3.85
	Lower leg impacts	6
	Total (out of 36)	21.21

v5.3

Occupant Protection Score 35.66 out of 37

Variant: 5 door hatch Eng: 1.6 litre petrol
Kerb mass: 1110 kg Category: CAR - SMALL
Vehicles built: 2011

Model History and Safety Features

The tested model of Hyundai Accent was introduced in Australia in August 2011. This ANCAP rating applies to all Accent sedan and hatch variants.

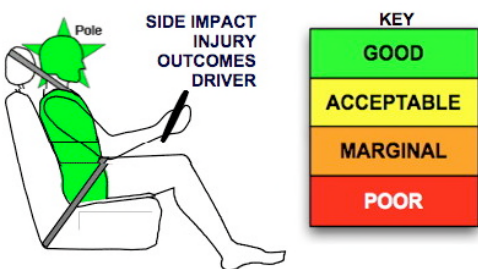
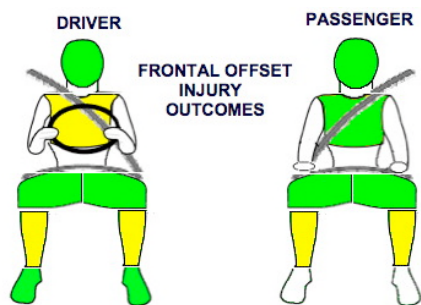
Dual front airbags, side airbags and head-protecting side curtains are standard equipment. Antilock brakes (ABS), electronic brake distribution (EBD) and electronic stability control (ESC) are also standard. Advanced seat belt reminders are fitted to all seats.

Pretensioners are fitted to the front seat belts to reduce slack in the event of a crash. A three point seat belt is fitted to the centre rear seat. This provides better protection than a two point (lap) seat belt.

OCCUPANT PROTECTION: 5 Stars

The Accent scored 14.66 out of 16 in the offset crash test. The passenger compartment held its shape well. There was a slight risk of serious leg injury for the driver and front passenger. There was a slight risk of serious chest injury for the driver.

The vehicle scored 16 out of 16 in the side impact crash test and a further 2 points in the pole test.



Whiplash Protection



Child and adult head impact

Adult leg impact (upper and full legforms)

pass marginal fail

AUGUST 2011

PO Box 4041

Manuka ACT 2603

accent11.doc Rated: 2011

Revised 23/4/2012



ANCAP

Crash testing for safety

AUSTRALASIAN
NEW CAR ASSESSMENT
PROGRAM

TECHNICAL DATA - HYUNDAI ACCENT - From August 2011

INJURY MEASUREMENTS

Body region	Offset Crash Test at 64km/h (v4.2)		Side Impact Crash Test at 50km/h (v4.1)
	Driver	Passenger	Driver
Head HIC	436	398	89
Acceleration (g for 3ms)	51.2	44.4	27.2
Neck - Shear (kN)	0.55	0.73	-
Tension (kN)	1.85	0.77	-
Extension (Nm)	25.7	21.5	-
Chest Accln (g for 3ms)			-
Compression (mm)	25.78	20.10	17.70
Viscous criterion (m/s)	0.11	0.05	0.15
Abdomen - Force (kN)	-	-	0.770
Pelvis - Force (kN)	-	-	1.760
Upper legs Force (kN)			
Left	0.95	0.81	
Right	0.25	0.34	
Knee displ (mm)			
Left	0.26	0.72	
Right	0.01	3.61	
Lower legs Force (kN)			
Left	2.21	1.89	
Right	2.38	2.23	
Index (Upper/Low)			
Left	0.29 /0.28	0.47 /0.41	
Right	0.32 /0.58	0.48/0.52	

Bonus points (maximum 5)

Pole Test: 2 pts

Seat belt reminders: 3 (see table below for details)

Modifiers - deductions from offset test scores

Head No deduction
 Chest No deduction
 Upper leg Variable & conc. loading No deduction
 Lower leg No deduction
 Foot score Score 4 points

Note: Steering column and pedal movements are measured relative to the driver's seat.

Modifiers - deductions from side impact test scores

Chest No deduction

Safety features

These specifications are subject to change. Please check with manufacturer for the latest specifications.

Driver airbag	S	Antilock (ABS) brakes / Electronic brake distribution / Brake Assist	S/S/S
Passenger front airbag	S	Electronic stability control (ESC, VSC, DSC, ESP, VSA)	S#
Side airbags, front seats - chest protection	S	3 point centre rear seat belt	S
Side airbags, front seats - head protection	S	Whiplash rating (RCAR protocol)	Good
Side airbags, rear seats - head protection	S	Intelligent seat belt reminder - driver	S
Driver knee airbag	X	Intelligent seat belt reminder - front passenger	S
Seat belt pretensioners (Front/rear outboard)	S/X	Intelligent seat belt reminder - rear seats	S

Key:

S = standard on all variants

O = optional on base variant. May be standard on higher variants

V= not available on base variant but standard or optional on higher variants

X = not available on any variant

ESC required by ANCAP for 5 star rating from 2008

