

# Crash Test Results

## New Car Safety

### KIA SORENTO (diesel)

From 2013 Front+side+head airbags



**ANCAP**  
Safety ★★★★★

**Safety Rating**

**Occupant Protection Score 33.21 out of 37**

Tested variant: GLS EX LHD Eng: 2.2 diesel

Kerb mass 1870 kg Category: SUV - LARGE

Vehicles built: 2009 Tested by Euro NCAP

**Important note:** The *diesel left-hand-drive* European model was tested by Euro NCAP in 2009. ANCAP was provided with technical information which showed that the MY13 Sorento provides comparable occupant protection to the tested vehicle.

#### Model History and Safety Features

This rating applies to model year 2013 (MY13) Sorentos with a 2.2 litre diesel engine and all-wheel-drive. Other variants are currently unrated.

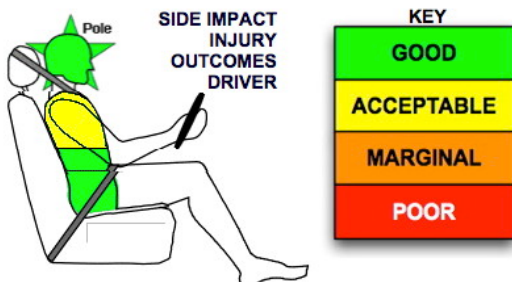
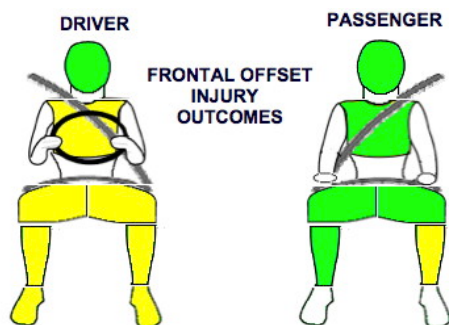
Dual front airbags, side airbags and head-protecting side curtains are standard equipment. Antilock brakes (ABS), electronic brakeforce distribution (EBD) and electronic stability control (ESC) are also standard. Intelligent seat belt reminders are fitted to both front seats.

Pretensioners are fitted to the front seat belts to reduce slack in the event of a crash.

#### OCCUPANT PROTECTION: 5 Stars

The Sorento scored 13.25 out of 16 in the offset crash test. The passenger compartment held its shape well. All injury ratings were good or acceptable.

The vehicle scored 15.96 out of 16 in the side impact crash test. There was a slight risk of serious chest injury for the driver. A further two points were scored in the pole test.



Offset crash test at 64km/h (Euro NCAP 2009)

#### FRONTAL OFFSET CRASH TEST

Body region scores out of 4 points each: Head/neck 4 pts, chest 3.27 pts, upper legs 3 pts, lower legs 2.98 pts.

The passenger compartment held its shape well in the offset crash test. The brake pedal moved rearwards by 77 mm and upwards 8 mm. The steering wheel hub moved 15mm forward, 10mm downward and 17 mm sideways. The front ("A") pillar moved 9 mm rearwards. All doors remained closed during the crash. After the crash the driver's door could be opened with high manual effort.

The airbag cushioned the head of the driver and contact was stable. Steering column components were a potential source of injury for the driver's knees. The passenger's head was cushioned by the airbag.

#### SIDE IMPACT CRASH TEST

Body region scores out of 4 points each: Head 4 pts, chest 3.96 pts, abdomen 4 pts, pelvis 4 pts.

The side impact test simulates a small car striking the driver's door of the vehicle under test. It is based on a regulation test but the regulation does not apply to vehicles with a high seat height like the Sorento. Experience shows that such vehicles can be expected to perform well in this test and the Sorento scored full marks.

The vehicle was eligible for a pole impact test, since it had head-protecting side airbags. The vehicle earned the maximum two points in this test.

#### PEDESTRIAN PROTECTION: Marginal

This rating is based on Euro NCAP tests of the 2009 Sorento. The 2013 model can be expected to have similar pedestrian protection.

PEDESTRIAN PROTECTION	Child head impacts	4.11
<b>MARGINAL</b>	Adult head impacts	6.07
	Upper leg impacts	Zero
	Lower leg impacts	5.72
	Total (out of 36)	15.90

Tested by Euro NCAP v5.1



**DECEMBER 2012**

PO Box 4041

Manuka ACT 2603

sorento13.doc Rated: 2011

Issued 4/12/2012



**ANCAP**

Crash testing for safety

AUSTRALASIAN  
NEW CAR ASSESSMENT  
PROGRAM

[www.ancap.com.au](http://www.ancap.com.au)

# TECHNICAL DATA - KIA SORENTO - From 2013

## INJURY MEASUREMENTS

Body region	Offset Crash Test at 64km/h (v4.2)		Side Impact Crash Test at 50km/h (v4.2)
	Driver	Passenger	Driver
<b>Head HIC</b>	404	343	30
Acceleration (g for 3ms)	47.9	42.7	20.7
<b>Neck - Shear (kN)</b>	0.29	0.65	-
Tension (kN)	1.57	0.90	-
Extension (Nm)	12.3	2.9	-
<b>Chest Accln (g for 3ms)</b>	-	-	-
Compression (mm)	27.09	16.87	22.21
Viscous criterion (m/s)	0.11	0.09	0.19
<b>Abdomen - Force (kN)</b>	-	-	0.640
<b>Pelvis - Force (kN)</b>	-	-	0.820
<b>Upper legs Force (kN)</b>			
Left	0.08	1.70	
Right	2.29	0.30	
Knee displ (mm)			
Left	0.00	3.40	
Right	1.30	0.60	
<b>Lower legs Force (kN)</b>			
Left	1.53	2.36	
Right	2.25	1.61	
Index (Upper/Low)			
Left	0.52 /0.20	0.28 /0.26	
Right	0.63 /0.29	0.21/0.2	

### Bonus points (maximum 5)

Pole Test: 2 pts

Seat belt reminders: 2 (see table below for details)

### Modifiers - deductions from offset test scores

Head	No deduction
Chest	No deduction
Upper leg	No deduction
Lower leg	No deduction
Foot score	Score 4 points

### Modifiers - deductions from side impact test scores

Chest	No deduction
-------	--------------

### Safety features

These specifications are subject to change. Please check with manufacturer for the latest specifications.



Driver airbag	S	Antilock (ABS) brakes / Electronic brake distribution / Brake Assist	S/S/S
Passenger front airbag	S	Electronic stability control (ESC, VSC, DSC, ESP, VSA)	S#
Side airbags, front seats - chest protection	S	3 point seat belt for all forward-facing seats	S
Side airbags, front seats - head protection	S	Whiplash protection (RCAR protocol)	Pending
Side airbags, rear seats - head protection	S	Intelligent seat belt reminder - driver	S
Driver knee airbag	X	Intelligent seat belt reminder - front passenger	S
Seat belt pretensioners (Front/Rear outboard)	S/X	Intelligent seat belt reminder - rear seats	X

Key:

S = standard on all variants

O = optional on base variant. May be standard on higher variants

V= not available on base variant but standard or optional on higher variants

X = not available on any variant

# ESC required by ANCAP for 5 star rating from 2008



# ANCAP

Crash testing for safety

AUSTRALASIAN  
NEW CAR ASSESSMENT  
PROGRAM

[www.ancap.com.au](http://www.ancap.com.au)