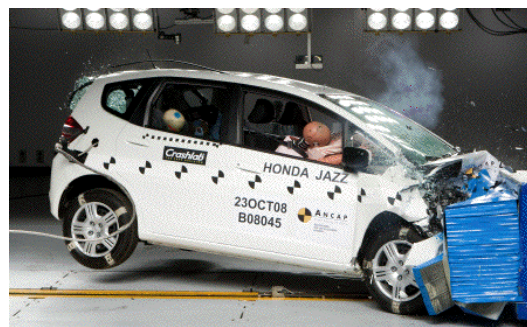


# Crash Test Results

## New Car Safety

### HONDA JAZZ (6 Airbags & ESC)

Oct 2010 on Front+side+head airbags\*



Offset crash test at 64km/h

#### FRONTAL OFFSET CRASH TEST (v4.1)

Body region scores out of 4 points each: Head/neck 3 pts, chest 3.64 pts, upper legs 4 pts, lower legs 3.78 pts.

The passenger compartment held its shape well in the offset crash test. The clutch pedal moved rearwards by 80 mm and upwards 31 mm. The steering wheel hub moved 57mm forward, 1mm downward and 3 mm sideways. The front ("A") pillar moved 12 mm rearwards. All doors remained closed during the crash. After the crash all doors opened with normal effort.

The airbag cushioned the head of the driver but contact was unstable, with the head rolling to the side. There were no knee hazards. The passenger's head was cushioned by the airbag.

#### SIDE IMPACT CRASH TEST (v4.2)

Body region scores out of 4 points each: Head 4 pts, chest 3.68 pts, abdomen 4 pts, pelvis 4 pts.

The vehicle was eligible for a pole test and scored a further 2 points in this test, which was conducted by Euro NCAP.

#### PEDESTRIAN PROTECTION: 3 Stars

The windscreen area provided reasonable protection for the adult head, and the bumper area scored well for the full leg assessment. Further improvement is needed for the child head test area, particularly the base of the windscreen. Some improvement could also be made to the upper leg test area.

**Occupant Protection Score 35.10 out of 37**

\* Safety equipment, as tested, not standard on all variants

Variant: GLI 5 door hatch Eng: 1.3 litre

Kerb weight: 1070 kg Category: CAR - LIGHT

Vehicles built: 2008/9 Side & pole tests by Euro NCAP

#### Model History and Safety Features

The tested model of Honda Jazz was introduced in Australia and New Zealand during 2008. This 5-star rating applies to Jazz with 6 airbags and Electronic Stability Control (ESC).

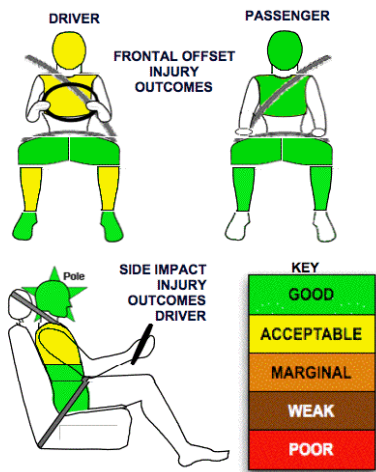
Dual front airbags are standard equipment. Antilock brakes (ABS) with electronic brakeforce distribution are also standard. Side airbags and head-protecting side curtains (as tested in Europe) are standard in New Zealand, optional on the Australian GLI variant and standard on other variants. ESC, which is needed for a 5-star rating, became standard from October 2010. ESC was not available prior to this date. An advanced seat belt reminder is fitted to the driver seat of all variants. Front passenger and rear seat belt reminders are optional on the GLI and standard on other variants.


Pretensioners are fitted to the front seat belts to reduce slack in the event of a crash. A three point seat belt is fitted to the centre rear seat. This provides better protection than a two point (lap) seat belt.

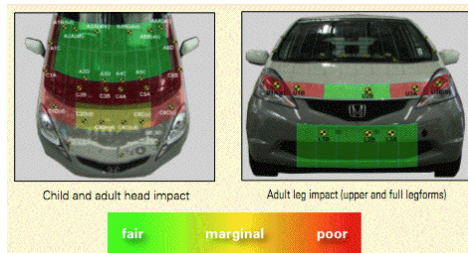
#### OCCUPANT PROTECTION: 5 Stars

The Jazz scored 14.42 out of 16 in the ANCAP offset crash test. The passenger compartment held its shape well. There was a slight risk of serious chest and leg injury for the driver.

The vehicle scored 15.68 out of 16 in the Euro NCAP side impact crash test. There was a slight risk of serious chest injury for the driver. A further 2 points were earned in the optional pole test.



PEDESTRIAN PROTECTION		
 <b>ANCAP</b> Rated ★ ★ ★ ★ ★ Tested by ANCAP v4.1	Child head impacts	2.57
	Adult head impacts	10
	Upper leg impacts	2
	Lower leg impacts	6
	<b>Total (out of 36)</b>	<b>20.57</b>



October 2010

PO Box 4041

Manuka ACT 2603

jazz10c.doc

Issued 12/10/2010



# TECHNICAL DATA - HONDA JAZZ (6 Airbags & ESC) - October 2010 on

## INJURY MEASUREMENTS

Body region	Offset Crash Test at 64km/h (v4.1)		Side Impact Crash Test at 50km/h (Euro NCAP v4.2)
	Driver	Passenger	Driver
<b>Head HIC</b>	313	387	114
Acceleration (g for 3ms)	51.0	55.4	33.53
<b>Neck - Shear (kN)</b>	0.60	0.62	-
Tension (kN)	1.43	1.34	-
Extension (Nm)	16.1	19.9	-
<b>Chest Accln (g for 3ms)</b>	47.900	35.200	-
Compression (mm)	24.50	20.60	23.62
Viscous criterion (m/s)	0.09	0.07	0.28
<b>Abdomen - Force (kN)</b>	-	-	0.850
<b>Pelvis - Force (kN)</b>	-	-	2.490
<b>Upper legs Force (kN)</b>			
Left	1.09	0.65	
Right	2.30	1.82	
Knee displ (mm)			
Left	0.17	0.92	
Right	0.00	3.55	
<b>Lower legs Force (kN)</b>			
Left	1.39	1.63	
Right	1.82	1.16	
Index (Upper/Low)			
Left	0.41 /0.31	0.28 /0.19	
Right	0.45 /0.28	0.2/0.15	

### Bonus points (maximum 5)

Pole Test: 2 pts

Seat belt reminders: 3 (see table below for details)

### Modifiers - deductions from offset test scores

Head	No deduction
Chest	No deduction
Upper leg Variable & conc. loading	No deduction
Lower leg	No deduction
Foot score	Score 4 points

Note: Steering column and pedal movements are measured relative to the driver's seat.

### Modifiers - deductions from side impact test scores

Chest	No deduction
-------	--------------

### Safety features

These specifications are subject to change. Please check with manufacturer for the latest specifications.



Driver airbag	S	Antilock (ABS) brakes / Electronic brake distribution / Brake Assist	S/S/X
Passenger front airbag	S	Electronic stability control (ESC, VSC, DSC, ESP, VSA)	S#
Side airbags, front seats - chest protection	O √ (S NZ)	3 point centre rear seat belt	S
Side airbags, front seats - head protection	O √ (S NZ)	Whiplash protection	Pending
Side airbags, rear seats - head protection	O √ (S NZ)	Intelligent seat belt reminder - driver	S
Driver knee airbag	X	Intelligent seat belt reminder - front passenger	O @
Seat belt pretensioners (Front/rear outboard)	S/X	Rear seat belt status indicator	O @

Key: √ = Fitted to vehicle that was crash tested @ Passenger and rear seat belt reminders are included with side curtain option  
S = standard on all variants

O = optional on base variant. May be standard on higher variants

V= not available on base variant but standard or optional on higher variants

X = not available on any variant

# ESC required by ANCAP for 5 star rating from 2008. Standard on Jazz from October 2010.