

Crash Test Results

New Car Safety

AUDI A1

From 2010

Front+side+head airbags



ANCAP
Safety ★★★★★

Safety Rating

Occupant Protection Score 32.75 out of 37

Variant: 1.2 TFSI 3 door Eng: 1.2 litre

Kerb mass: 1120 kg Category: CAR - SMALL

Vehicles built: 2010 Tested by Euro NCAP

Important note: The 3-door left-hand-drive European model was tested by Euro NCAP. ANCAP was provided with technical information which showed that the rating applies to 5-door (Sportback) petrol variants.

Model History and Safety Features

The tested model of Audi A1 was introduced in Australia during 2010. This rating applies to all petrol variants, including the 5-door Sportback.

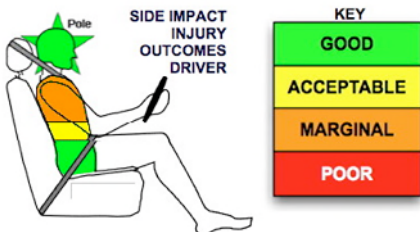
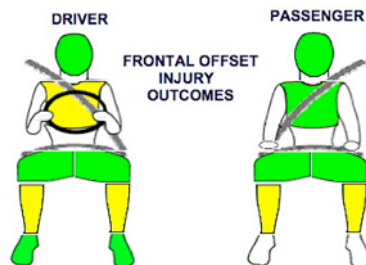
Dual front airbags, side airbags and head-protecting side curtains are standard equipment. Antilock brakes (ABS), electronic brakeforce distribution (EBD) and electronic stability control (ESC) are also standard. Intelligent seat belt reminders are fitted to both front seats.

Pretensioners are fitted to the front seat belts to reduce slack in the event of a crash.

OCCUPANT PROTECTION: 5 Stars

The A1 scored 14.9 out of 16 in the offset crash test. The passenger compartment held its shape well. There was a slight risk of serious chest and leg injury for the driver.

The vehicle scored 13.85 out of 16 in the side impact crash test. There was a moderate risk of serious chest injury for the driver. A further two points were scored in the optional pole test.



Whiplash Protection



Offset crash test at 64km/h

FRONTAL OFFSET CRASH TEST

Body region scores out of 4 points each: Head/neck 4 pts, chest 3.23 pts, upper legs 4 pts, lower legs 3.67 pts.

The passenger compartment held its shape well in the offset crash test. The accelerator pedal moved rearwards by 14 mm and downwards 28mm. The steering wheel hub moved 22mm forward, 10 mm upward and 1 mm sideways. The front ("A") pillar moved 12 mm rearwards. All doors remained closed during the crash. After the crash the all doors could be opened with normal effort.

The airbag cushioned the head of the driver and contact was stable. There were no knee hazards. The passenger's head was cushioned by the airbag.

SIDE IMPACT CRASH TEST

Body region scores out of 4 points each: Head 4 pts, chest 2.09 pts, abdomen 3.76 pts, pelvis 4 pts.

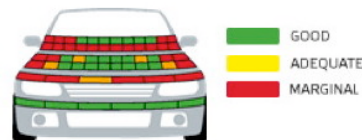
The vehicle was eligible for an optional pole impact test, since it had head-protecting side airbags. The manufacturer decided to go ahead with the pole test and the vehicle earned a further two points.

PEDESTRIAN PROTECTION Marginal

Protection offered by the bumper to pedestrians' legs was good. The front edge of the bonnet was poor in almost every area tested. The bonnet was rated as good in most areas where a child's head might hit. However, for those areas likely to be struck by an adult's head, the protection offered was predominantly poor.

PEDESTRIAN PROTECTION	Child head impacts	8.08
MARGINAL	Adult head impacts	3.50
	Upper leg impacts	0.17
	Lower leg impacts	6
	Total (out of 36)	17.74

Tested by Euro NCAP v5



JANUARY 2011

PO Box 4041

Manuka ACT 2603

a1_10.doc Rated: 2011

Revised 22/10/2012



ANCAP

Crash testing for safety

AUSTRALASIAN
NEW CAR ASSESSMENT
PROGRAM

www.ancap.com.au

TECHNICAL DATA - AUDI A1 - From 2010

INJURY MEASUREMENTS

Body region	Offset Crash Test at 64km/h (v5.1)		Side Impact Crash Test at 50km/h (v5.1)
	Driver	Passenger	Driver
Head HIC	265	237	79
Acceleration (g for 3ms)	41.7	36.1	29.0
Neck - Shear (kN)	0.58	0.42	-
Tension (kN)	1.31	0.77	-
Extension (Nm)	13.4	17.9	-
Chest Accln (g for 3ms)	-	-	-
Compression (mm)	27.37	16.86	31.54
Viscous criterion (m/s)	0.13	0.05	0.41
Abdomen - Force (kN)	-	-	1.09
Pelvis - Force (kN)	-	-	1.71
Upper legs Force (kN)			
Left	0.10	1.00	
Right	0.23	0.10	
Knee displ (mm)			
Left	0.00	0.00	
Right	0.00	0.00	
Lower legs Force (kN)			
Left	1.88	2.24	
Right	2.50	2.09	
Index (Upper/Low)			
Left	0.41 /0.21	0.45 /0.17	
Right	0.47 /0.45	0.41/0.23	

Bonus points (maximum 5)

Pole Test: 2 pts

Seat belt reminders: 2 (see table below for details)

Modifiers - deductions from offset test scores

Head	No deduction
Chest	No deduction
Upper leg Variable & conc. loading	No deduction
Lower leg	No deduction
Foot score	Score 4 points

Modifiers - deductions from side impact test scores

Chest	No deduction
-------	--------------

Safety features

These specifications are subject to change. Please check with manufacturer for the latest specifications.



Driver airbag	S	Antilock (ABS) brakes / Electronic brake distribution / Brake Assist	S/S/S
Passenger front airbag	S	Electronic stability control (ESC, VSC, DSC, ESP, VSA)	S#
Side airbags, front seats - chest protection	S	3 point centre rear seat belt	S
Side airbags, front seats - head protection	S	Whiplash Protection (RCAR protocol)	Good
Side airbags, rear seats - head protection	S	Intelligent seat belt reminder - driver	S
Driver knee airbag	X	Intelligent seat belt reminder - front passenger	S
Seat belt pretensioners (Front/Rear outboard)	S/X	Intelligent seat belt reminder - rear seats	X#

Key: # Rear seat belt reminder standard in Europe

S = standard on all variants

O = optional on base variant. May be standard on higher variants

V= not available on base variant but standard or optional on higher variants

X = not available on any variant

ESC required by ANCAP for 5 star rating from 2008



ANCAP

Crash testing for safety

AUSTRALASIAN
NEW CAR ASSESSMENT
PROGRAM

www.ancap.com.au