

# Crash Test Results

## New Car Safety

### FORD FALCON FG MkII

From 2011 Front+side+head airbags



Offset crash test at 64km/h (2008)

#### FRONTAL OFFSET CRASH TEST (v4.1)

Body region scores out of 4 points each: Head/neck 4 pts, chest 2.92 pts, upper legs 4 pts, lower legs 3.69 pts.

The passenger compartment held its shape extremely well in the offset crash test. The accelerator pedal moved rearwards by 29 mm and downwards 2mm. By design, the brake pedal moved forwards to reduce injury risk. The steering wheel hub moved 53mm forward, 47mm downward and 10 mm sideways. All doors remained closed during the crash. After the crash all doors could be opened with normal effort.

The airbag cushioned the head of the driver and contact was stable. There were no knee hazards. The passenger's head was cushioned by the airbag.

#### SIDE IMPACT CRASH TEST (v4.1)

Body region scores out of 4 points each: Head 4 pts, chest 4 pts, abdomen 4 pts, pelvis 4 pts.

The vehicle was eligible for an optional pole impact test, since it had head-protecting side airbags and scored four points for the head in the side impact test. The manufacturer decided to go ahead with the pole test and the vehicle earned the maximum two points.

#### PEDESTRIAN PROTECTION: Marginal\*

The Falcon performed poorly at the base of windscreen and sides of the bonnet. Upper leg protection was also poor.



**Occupant Protection Score 34.61 out of 37**

Variant: XT sedan Eng: 4 litre petrol  
Kerb mass: 1710 kg Category: CAR - LARGE  
Test vehicles built: July 2008

#### Model History and Safety Features

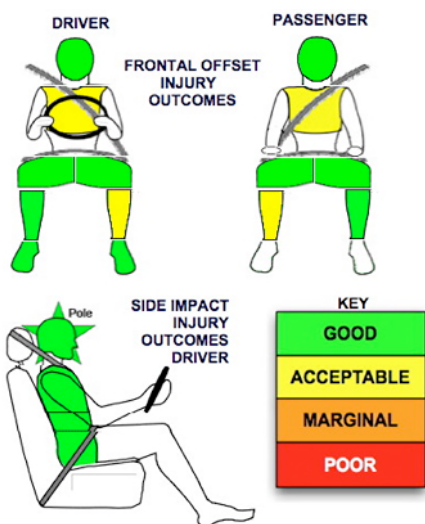
The Ford Falcon FG was introduced in Australia during 2008. This 5-star rating applies to all variants of the FG Mark II, including the new 4 cylinder engine and EcoLPi.

Dual front airbags, side airbags and head-protecting side curtains are standard equipment. Antilock brakes (ABS), electronic brakeforce distribution (EBD) and electronic stability control (ESC) are also standard. Intelligent seat belt reminders are fitted to both front seats. Power adjustable pedals and a reversing camera are available. Several other safety features are incorporated in the Intelligent Safety System.

Pretensioners are fitted to the front seat belts to reduce slack in the event of a crash.

#### OCCUPANT PROTECTION: 5 Stars

The Falcon scored 14.61 out of 16 in the offset crash test. The passenger compartment was in excellent shape after the test. There was a slight risk of serious chest and leg injury. The vehicle scored 16 out of 16 in the side impact crash test and a further two points in the optional pole test.

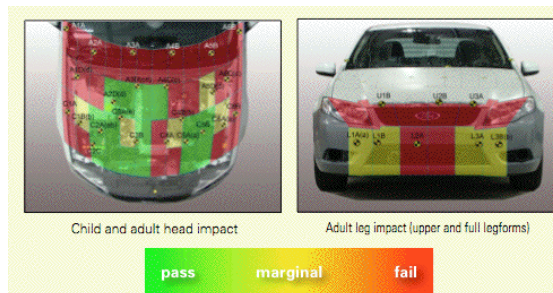


#### Whiplash Protection



PEDESTRIAN PROTECTION	Child head impacts	7.25
<b>MARGINAL</b>	Adult head impacts	2.10
	Upper leg impacts	Zero
	Lower leg impacts	1.60
	Total (out of 36)	10.95
	v4.1*	

\* Based on tests of a 2008 Falcon to a previous protocol. Scores might vary under the latest test protocol with the MkII Falcon.



November 2011

PO Box 4041  
Manuka ACT 2603  
falcon12.doc  
Issued 29/11/2011



# TECHNICAL DATA - FORD FALCON FG MkII - From 2011

## INJURY MEASUREMENTS

Body region	Offset Crash Test at 64km/h (v4.1)		Side Impact Crash Test at 50km/h (v4.1)
	Driver	Passenger	Driver
<b>Head HIC</b>	201	282	117
Acceleration (g for 3ms)	40.6	44.2	50.9
<b>Neck - Shear (kN)</b>	0.54	0.39	-
Tension (kN)	1.49	0.98	-
Extension (Nm)	17.1	17.0	-
<b>Chest Accln (g for 3ms)</b>	33.80	37.40	-
Compression (mm)	29.58	23.00	20.30
Viscous criterion (m/s)	0.11	0.07	0.23
<b>Abdomen - Force (kN)</b>	-	-	0.743
<b>Pelvis - Force (kN)</b>	-	-	1.610
<b>Upper legs Force (kN)</b>			
Left	0.68	0.15	
Right	0.11	0.37	
<b>Knee displ (mm)</b>			
Left	0.05	0.11	
Right	0.09	0.62	
<b>Lower legs Force (kN)</b>			
Left	1.93	1.36	
Right	1.39	1.85	
<b>Index (Upper/Low)</b>			
Left	0.45 /0.21	0.31 /0.20	
Right	0.34 /0.24	0.25/0.47	

### Bonus points (maximum 5)

Pole Test: 2 pts

Seat belt reminders: 2 (see table below for details)

### Modifiers - deductions from offset test scores

Head No deduction  
 Chest No deduction  
 Upper leg Variable & conc. loading No deduction  
 Lower leg No deduction  
 Foot score Score 4 points

Note: Steering column and pedal movements are measured relative to the driver's seat.

### Modifiers - deductions from side impact test scores

Chest No deduction

### Safety features (late 2011)

These specifications are subject to change. Please check with manufacturer for the latest specifications.



Driver airbag	S	Antilock (ABS) brakes / Electronic brakeforce distribution / Emergency Brake Assist	S/S/S
Passenger front airbag	S	Electronic stability control (ESC, VSC, DSC, ESP, VSA)	S#
Side airbags, front seats - chest protection	S	3 point centre rear seat belt	S
Side airbag, front seats - head protection	S	Whiplash protection (RCAR protocol)	Good
Side airbags, rear seats - head protection	S	Intelligent seat belt reminder - driver	S
Driver knee airbag	X	Intelligent seat belt reminder - front passenger	S
Seat belt pretensioners (Front/rear outboard)	S/X	Rear seat belt status indicator	X

Key:

S = standard on all variants

O = optional on base variant. May be standard on higher variants

V= not available on base variant but standard or optional on higher variants

X = not available on any variant

# ESC required by ANCAP for 5 star rating from 2008.



**ANCAP**

Crash testing for safety

AUSTRALASIAN  
NEW CAR ASSESSMENT  
PROGRAM