

Crash Test Results

New Car Safety

AUDI A6

From July 2011 Front+side+head airbags



ANCAP Occupant Protection
Rated ★★★★★

Occupant Protection Score 34.91 out of 37

Variant: LHD Eng: 2 litre diesel
Kerb mass 1650 kg Category: CAR - LUXURY
Vehicles built: 2011 Tested by Euro NCAP

Important note: The *diesel left-hand-drive* European model was tested by Euro NCAP. Australasian specifications may vary and therefore models sold in Australasia might provide different levels of protection to those described on this page.

Model History and Safety Features

The tested model of Audi A6 was introduced in Australasia during 2011. This ANCAP rating applies to A6 with a 4 cylinder diesel engine. Further technical information is being sought about other variants.

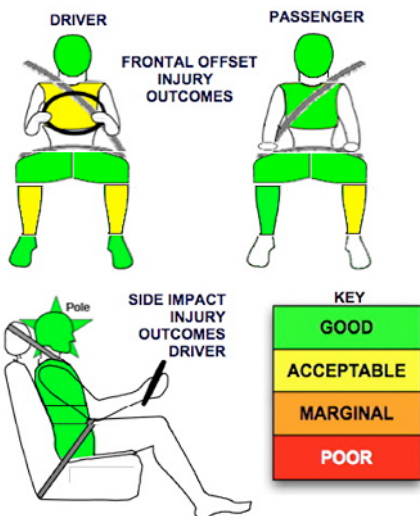
Dual front airbags, side airbags and head-protecting side curtains are standard equipment. Antilock brakes (ABS), electronic brakeforce distribution (EBD) and electronic stability control (ESC) are also standard. Intelligent seat belt reminders are fitted to both front seats.

Pretensioners are fitted to the front seat belts to reduce slack in the event of a crash. A three point seat belt is fitted to the centre rear seat. This provides better protection than a two point (lap) seat belt.

OCCUPANT PROTECTION: 5 Stars

The Audi A6 scored 14.91 out of 16 in the offset crash test. The passenger compartment held its shape well. There was a slight risk of serious chest and leg injury for the driver.

The vehicle scored 15 out of 16 in the side impact crash test. Injury values were all good but the vehicle lost a point because the driver door unlatched. The A6 earned a further two points in the pole test.



Whiplash Protection



Offset crash test at 64km/h

FRONTAL OFFSET CRASH TEST

Body region scores out of 4 points each: Head/neck 4 pts, chest 3.79 pts, upper legs 4 pts, lower legs 3.12 pts.

The passenger compartment held its shape well in the offset crash test. The brake pedal moved rearwards by 5 mm. The clutch pedal moved upwards 12 mm. The steering wheel hub moved 37mm forward, 12mm downward and 6 mm sideways. The front ("A") pillar moved 1mm forwards. All doors remained closed during the crash. After the crash all doors could be opened with normal effort.

The airbag cushioned the head of the driver and contact was stable. There were no knee hazards. The passenger's head was cushioned by the airbag.

SIDE IMPACT CRASH TEST

Body region scores out of 4 points each: Head 4 pts, chest 4 pts, abdomen 4 pts, pelvis 4 pts.

The driver's door was found to be unlatched after the side impact test.

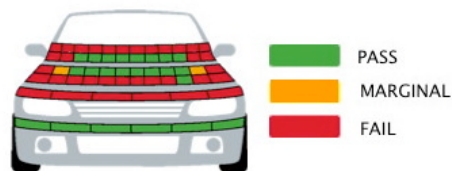
The vehicle was eligible for pole impact test, since it had head-protecting side airbags. The vehicle earned the maximum two points in this test.

PEDESTRIAN PROTECTION: Marginal

The bumper provided good protection for pedestrians' legs. However, the front edge of the bonnet was poor in all areas tested and scored no points. The bonnet was also rated predominantly as poor for the protection it offered to the head of a struck child and to the protection it offered an adult.

PEDESTRIAN PROTECTION	Child head impacts	4.71
MARGINAL	Adult head impacts	4
	Upper leg impacts	Zero
	Lower leg impacts	6
	Total (out of 36)	14.71

Tested by Euro NCAP v5.3



SEPTEMBER 2011

PO Box 4041
Manuka ACT 2603
a6_11.doc
Issued 16/9/2011



ANCAP
Crash testing for safety
AUSTRALASIAN
NEW CAR ASSESSMENT
PROGRAM

TECHNICAL DATA - AUDI A6 - From July 2011

INJURY MEASUREMENTS

Body region	Offset Crash Test at 64km/h (v5.1)		Side Impact Crash Test at 50km/h (v)
	Driver	Passenger	Driver
Head HIC	205	260	26
Acceleration (g for 3ms)	40.4	39.6	19.1
Neck - Shear (kN)	0.36	0.42	-
Tension (kN)	0.93	0.57	-
Extension (Nm)	14.7	24.1	-
Chest Accln (g for 3ms)	-	-	-
Compression (mm)	23.48	15.63	16.60
Viscous criterion (m/s)	0.08	0.06	0.08
Abdomen - Force (kN)	-	-	0.610
Pelvis - Force (kN)	-	-	1.170
Upper legs Force (kN)			
Left	0.42	0.40	
Right	0.64	0.10	
Knee displ (mm)			
Left	0.10	0.00	
Right	0.00	0.10	
Lower legs Force (kN)			
Left	1.84	2.02	
Right	3.16	1.74	
Index (Upper/Low)			
Left	0.44 /0.12	0.38 /0.42	
Right	0.60 /0.58	0.33/0.11	

Bonus points (maximum 5)

Pole Test: 2 pts

Seat belt reminders: 3 (see table below for details)

Modifiers - deductions from offset test scores

Head	No deduction
Chest	No deduction
Upper leg Variable & conc. loading	No deduction
Lower leg	No deduction
Foot score	Score 4 points

Modifiers - deductions from side impact test scores

Chest	No deduction
Door opens during crash	1 pt deduction

Safety features

These specifications are subject to change. Please check with manufacturer for the latest specifications.

Driver airbag	S	Antilock (ABS) brakes / Electronic brake distribution / Brake Assist	S/S/S
Passenger front airbag	S	Electronic stability control (ESC, VSC, DSC, ESP, VSA)	S#
Side airbags, front seats - chest protection	S	3 point centre rear seat belt	S
Side airbags, front seats - head protection	S	Whiplash protection (RCAR protocol)	Good
Side airbags, rear seats - head protection	S	Intelligent seat belt reminder - driver	S
Driver knee airbag	X	Intelligent seat belt reminder - front passenger	S
Seat belt pretensioners (Front/Rear outboard)	S/X	Intelligent seat belt reminder - rear seats	S

Key:

S = standard on all variants

O = optional on base variant. May be standard on higher variants

V= not available on base variant but standard or optional on higher variants

X = not available on any variant

ESC required by ANCAP for 5 star rating from 2008

