

Crash Test Results

New Car Safety

HYUNDAI i40

From 2011 Front+side+head+knee airbags



Offset crash test at 64km/h

FRONTAL OFFSET CRASH TEST

Body region scores out of 4 points each: Head/neck 4 pts, chest 3.41 pts, upper legs 3.50 pts, lower legs 3.27 pts.

The passenger compartment held its shape well in the offset crash test. The brake pedal moved rearwards by 65 mm and upwards 14 mm. The steering wheel hub moved 34mm forward, 37mm downward and 5 mm sideways. The front ("A") pillar moved 11 mm rearwards. All doors remained closed during the crash. After the crash all doors could be opened with normal effort.

The airbag cushioned the head of the driver and contact was stable. Despite the knee airbag Euro NCAP found that the steering column components were a potential source of injury for the driver's knees. The passenger's head was cushioned by the airbag.

SIDE IMPACT CRASH TEST

Body region scores out of 4 points each: Head 4 pts, chest 4 pts, abdomen 4 pts, pelvis 4 pts.

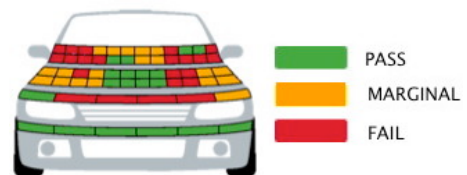
The vehicle was eligible for an optional pole impact test, since it had head-protecting side airbags. The vehicle earned the maximum two points in this test.

PEDESTRIAN PROTECTION: Marginal

The protection offered by the bonnet was predominantly poor or marginal. The front edge of the bonnet also offered mostly poor or marginal protection to pedestrians. Only the bumper scored maximum points, offering good protection to pedestrians' legs.

PEDESTRIAN PROTECTION	Child head impacts	5.24
MARGINAL	Adult head impacts	2.83
	Upper leg impacts	1.47
	Lower leg impacts	6
	Total (out of 36)	15.53

Tested by Euro NCAP v5.3



Occupant Protection Score 34.18 out of 37

Variant: GLS 5 dr wagon Eng: 1.7 diesel

Kerb mass 1570 kg Category: CAR - MEDIUM

Vehicles built: 2011 Tested by Euro NCAP

Important note: The *diesel left-hand-drive* European model was tested by Euro NCAP. Australasian specifications may vary and therefore models sold in Australasia might provide different levels of protection to those described on this page.

Model History and Safety Features

The tested model of Hyundai i40 was introduced in Australia during 2011. This ANCAP rating applies to all diesel and petrol variants of the i40.

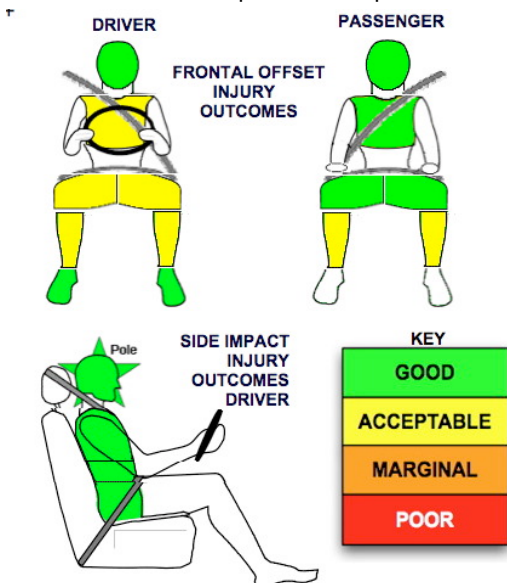
Dual front airbags, side airbags, head-protecting side curtains and a driver knee airbag are standard equipment. Antilock brakes (ABS), electronic brakeforce distribution (EBD) and electronic stability control (ESC) are also standard. Intelligent seat belt reminders are fitted to both front seats.

Pretensioners are fitted to the front seat belts to reduce slack in the event of a crash.

OCCUPANT PROTECTION: 5 Stars

The i40 scored 14.18 out of 16 in the offset crash test. The passenger compartment held its shape well. There was a slight risk of serious chest and leg injury for the driver.

The vehicle scored 16 out of 16 in the side impact crash test and a further two points in the pole test.



OCTOBER 2011

PO Box 4041

Manuka ACT 2603

i40_11.doc

Revised 27 February 2012



TECHNICAL DATA - HYUNDAI i40 - From 2011

INJURY MEASUREMENTS

Body region	Offset Crash Test at 64km/h (v5.1)		Side Impact Crash Test at 50km/h (v5.1)
	Driver	Passenger	Driver
Head HIC	382	229	28
Acceleration (g for 3ms)	44.8	36.6	16.5
Neck - Shear (kN)	0.27	0.43	-
Tension (kN)	1.64	1.09	-
Extension (Nm)	14.0	20.9	-
Chest Accln (g for 3ms)	-	-	-
Compression (mm)	26.15	15.99	11.28
Viscous criterion (m/s)	0.08	0.05	0.04
Abdomen - Force (kN)	-	-	0.460
Pelvis - Force (kN)	-	-	1.220
Upper legs Force (kN)			
Left	0.61	2.10	
Right	1.74	0.50	
Knee displ (mm)			
Left	1.10	1.20	
Right	1.70	0.20	
Lower legs Force (kN)			
Left	1.90	2.71	
Right	3.09	1.88	
Index (Upper/Low)			
Left	0.26 /0.41	0.28 /0.31	
Right	0.37 /0.42	0.41/0.28	

Bonus points (maximum 5)

Pole Test: 2 pts

Seat belt reminders: 2 (see table below for details)

Modifiers - deductions from offset test scores

Head	No deduction
Chest	No deduction
Upper leg Variable loading	0.5 pt deduction Left & Right
Lower leg	No deduction
Foot score	Score 4 points

Modifiers - deductions from side impact test scores

Chest	No deduction
-------	--------------

Safety features

These specifications are subject to change. Please check with manufacturer for the latest specifications.



Driver airbag	S	Antilock (ABS) brakes / Electronic brake distribution / Brake Assist	S/S/S
Passenger front airbag	S	Electronic stability control (ESC, VSC, DSC, ESP, VSA)	S#
Side airbags, front seats - chest protection	S	3 point centre rear seat belt	S
Side airbags, front seats - head protection	S	Whiplash protection (RCAR protocol)	Pending
Side airbags, rear seats - head protection	S	Intelligent seat belt reminder - driver	S
Driver knee airbag	S	Intelligent seat belt reminder - front passenger	S
Seat belt pretensioners (Front/Rear outboard)	S/X	Intelligent seat belt reminder - rear seats	X

Key:

S = standard on all variants

O = optional on base variant. May be standard on higher variants

V= not available on base variant but standard or optional on higher variants

X = not available on any variant

ESC required by ANCAP for 5 star rating from 2008