

ANCAP Safety Rating: JEEP GRAND CHEROKEE

(March 2013 - onwards)



Frontal offset test at 64km/h

This ANCAP safety rating applies to:

Make / Model	Jeep Grand Cherokee
Year Range	March 2013 - onwards
Variant(s)*	All V6 variants
Vehicle Type	Large SUV

This ANCAP safety rating applies to Jeep Grand Cherokees built from March 2013, when several safety improvements were introduced. It applies to all petrol and diesel variants with a V6 engine, including the Trailhawk released in April 2017.

Dual frontal, side chest and side head airbags (curtains) and a driver knee airbag are standard. Autonomous emergency braking (AEB) and blind spot monitoring (BSM) are available for some variants. Advanced seat belt reminders are fitted to both front seats.

Injury Outcomes.

Frontal Offset Driver



Passenger



Side Impact & Pole# Driver



Whiplash Protection Driver



Head protection only.

Test Results Summary.

Airbags	Dual Frontal, Side, Head, Knee
Frontal Offset Test	14.09 (out of 16)
Side Impact Test	16.00 (out of 16)
Pole Test	2 (out of 2)
Whiplash Protection	Good
Pedestrian Protection	Marginal
ESC	Standard
Seat Belt Reminders	2.0 (out of 3)
Overall Score	34.09 (out of 37)
ANCAP Safety Rating	★★★★★
Rating Year^	2014

Occupant Protection.

Frontal Offset Test

Each body region is scored out of 4 points

Head / neck:	4.00 points
Chest:	3.02 points
Upper legs:	4.00 points
Lower legs:	3.07 points

The passenger compartment held its shape well in the frontal offset test. Pedal and steering wheel displacements were well controlled. Driver and passenger contact with the airbags was stable. All doors remained closed during the crash.

Side Impact Test

Each body region is scored out of 4 points

Head:	4.00 points
Chest:	4.00 points
Abdomen:	4.00 points
Pelvis:	4.00 points

Good protection was provided for the driver in the side impact test.

Pole Test

Scored out of 2 points

Score:	2.00 points
--------	-------------

The vehicle was eligible for a side pole test because it has side curtain airbags. The vehicle scored the maximum 2 points for head protection in this test.

Whiplash Protection Test

Whiplash protection is assessed to the RCAR Protocol

Geometric test:	Good
Dynamic test:	Good
Overall whiplash rating:	Good*

* Based on 2011 IIHS result.

ANCAP Safety Rating: JEEP GRAND CHEROKEE

(March 2013 - onwards)



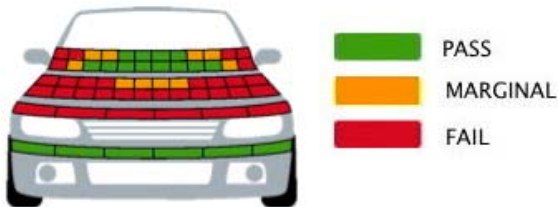
Pedestrian Protection.

Pedestrian Test

Scored out of 36 points

Adult & child head impacts: 10.06 points
Upper leg impacts: 0.00 points
Lower leg impacts: 6.00 points

This vehicle scored 16.06 out of 36 points (Marginal). The bumper provided good protection in all areas tested and scored maximum points, however the front edge of the bonnet was poor in all areas tested. In almost all areas likely to be struck by the head of a child, the bonnet provided poor protection. Protection provided to an adult's head was mixed with areas of good and poor protection.
(Tested by Euro NCAP v5.3)



Score Deductions.

Deductions from frontal offset test scores

Head / neck: No deductions
Chest: No deductions
Upper legs: No deductions
Lower legs: No deductions

Deductions from side impact test score

Chest: No deductions

Deductions from pole test score

Head: No deductions

Safety Features & Technologies.

Descriptions of each of these safety features and safety assist technologies (SAT) and detail on fitting requirements for each star rating level can be found at ancap.com.au.

Safety Feature / Safety Assist Technology	Availability
Seat belts (three-point) for all forward-facing seats	S
Seat belt pretensioners (front)	S
Seat belt pretensioners (rear outboard)	X
Intelligent seat belt reminder (driver)	S
Intelligent seat belt reminder (front passenger)	S
Intelligent seat belt reminder (2 nd row seats)	X
Airbag - Front (driver)	S
Airbag - Front (passenger)	S
Airbag - Side, chest protection (front seats)	S
Airbag - Side, chest protection (2 nd row seats)	X
Airbag - Side, head protection (front seats)	S
Airbag - Side, head protection (2 nd row seats)	S
Airbag - Knee (driver)	S
Airbag - Knee (front passenger)	X
Head restraints for all seats	S
Adaptive cruise control (ACC)	V
Antilock braking system (ABS)	S
Autonomous emergency braking (AEB)	V
Blind spot monitoring	V
Daytime running lights (DRL)	S
Electronic brakeforce distribution (EBD)	S
Electronic stability control (ESC)	S
Emergency brake assist (EBA)	S
Hill launch assist	S
Lane support system (LSS)	X
Reversing collision avoidance	S
Speed alarm/limiter (manual speed assistance)	S
Tyre pressure monitoring system (TPMS)	S

These specifications are subject to change. Please check with the manufacturer for the latest specifications.

S = Standard on all variants.

O = Optional on base variant. May be standard on higher variants.

V = Not available on base variant but standard or optional on higher variants.

X = Not available on any variant.

E = Available in Europe / USA but not available on any Australasian variant.

ANCAP Safety Rating: JEEP GRAND CHEROKEE

(March 2013 - onwards)



Injury Values & Measurements.

Body Region	Frontal offset test at 64 km/h (v5.1)		Side impact test at 50 km/h (v5.1)
	Driver	Passenger	Driver
Head			
HIC	384.00	446.00	10.00
Acceleration (g for 3ms)	60.00	57.00	12.50
Neck			
Shear (kN)	0.80	0.68	-
Tension (kN)	1.27	0.80	-
Extension (Nm)	11.20	26.10	-
Chest			
Acceleration (g for 3ms)	-	-	-
Compression (mm)	28.83	20.70	8.21
Viscous criterion (m/s)	0.14	0.05	0.02
Abdomen			
Force (kN)	-	-	0.16
Pelvis			
Force (kN)	-	-	0.36
Upper legs			
Femur force left (kN)	0.57	0.49	
Femur force right (kN)	0.49	1.28	
Knee displacement left (mm)	0.24	0.30	
Knee displacement right (mm)	0.00	0.23	
Lower legs			
Force left (kN)	2.22	1.70	
Force right (kN)	2.56	2.55	
Index (upper / lower) left	0.36 / 0.45	0.49 / 0.27	
Index (upper / lower) right	0.34 / 0.35	0.61 / 0.22	
Intrusion Measurements*			
Steering column			
Forward (mm)	-88		
Upward (mm)	-29		
Sideways (mm)	1		
Pedals			
Brake - rearward (mm)	15		
Brake - upward (mm)	14		
A-Pillar			
Rearward (mm)	5		

+ Steering column and pedal movements are measured relative to the driver's seat.

* ANCAP safety ratings do not automatically extend to variants that have different body styles, engine configurations, driven wheels or occupant restraint systems (e.g. fewer airbags). In these cases, ANCAP considers technical evidence submitted by manufacturers before deciding on extending a rating to additional variants of a model. For further information about the application of ANCAP safety ratings to model variants, see the ANCAP Variant Policy.

^ The Rating Year denotes the year requirements against which a vehicle has been assessed. The Rating Year is determined by ANCAP and may be based on the year in which a new vehicle model is first launched into the Australian and/or New Zealand markets; the year in which the vehicle was tested (if tested by Euro NCAP); or, for vehicles which hold an existing ANCAP safety rating, the year in which the rating was updated (or earlier applicable year).

Assessment Details.

Tested Make / Model	Jeep Grand Cherokee 3.0 V6 diesel & 3.6 V6 petrol
Tested Vehicle(s) Built	2015
Tested Body Type	Wagon
Tested Vehicle Kerb Weight	2210 kg
Tested Vehicle Engine	3.0 V6 diesel & 3.6 V6 petrol
Tested By	ANCAP / Euro NCAP
Assessed By	ANCAP
Document Reference	CHEROKEE15
Document Created / Revised	3 July 2015 / 22 March 2017
Rating Published	July 2015
Rating Updated	22 March 2017

