

Crash Test Results

New Car Safety

FORD FALCON UTE FG MkII

From 2011 Front+side+head airbags



Side pole crash test at 29km/h

FRONTAL OFFSET CRASH TEST (v4.1)

Body region scores out of 4 points each: Head/neck 4 pts, chest 2.75 pts, upper legs 4 pts, lower legs 3.87 pts.

The passenger compartment held its shape extremely well in the offset crash test. The accelerator pedal moved rearwards by 60 mm. The brake pedal moved downwards 2mm. The steering wheel hub moved 30mm forward, 15 mm upward and 5 mm sideways. There was no rearwards movement of the front ("A") pillar. All doors remained closed during the crash. After the crash both doors could be opened with normal effort.

The airbag cushioned the head of the driver and contact was stable. There were no knee hazards with the tunnel-mounted transmission control. Due to knee hazards, a 2 point deduction applies where the transmission control is mounted on the steering column but that variant retains a 5 star rating (offset score 12.62, overall score 32.58).

SIDE IMPACT CRASH TEST (v4.1)

Body region scores out of 4 points each: Head 4 pts, chest 3.96 pts, abdomen 4 pts, pelvis 4 pts.

The vehicle was eligible for an optional pole impact test, since it had head-protecting side airbags. The vehicle earned the maximum two points in this test.

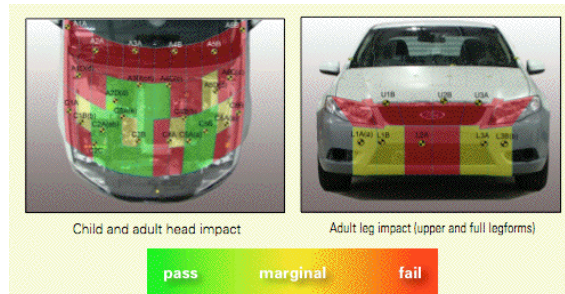
PEDESTRIAN PROTECTION: Marginal

The following are based on ANCAP's tests of the Falcon sedan.

PEDESTRIAN PROTECTION	Child head impacts	7.25
MARGINAL	Adult head impacts	2.10
	Upper leg impacts	Zero
	Lower leg impacts	1.60
	Total (out of 36)	10.95

Version 4.1

* Based on tests of a 2008 Falcon sedan to a previous protocol. Scores might vary under the latest test protocol



Occupant Protection Score 34.58 out of 37

Tested variant: STYLESIDE BOX Eng: 4 litre

Kerb mass: 1730 kg

Category: UTILITY

Vehicles built: 2008 & 2010

Model History and Safety Features

The tested model of Ford Falcon FG Ute was introduced in Australia during 2008. The FG Mk II Ute was launched in late 2011 and this 5-star ANCAP rating applies to all Mk II variants including EcoLPi.

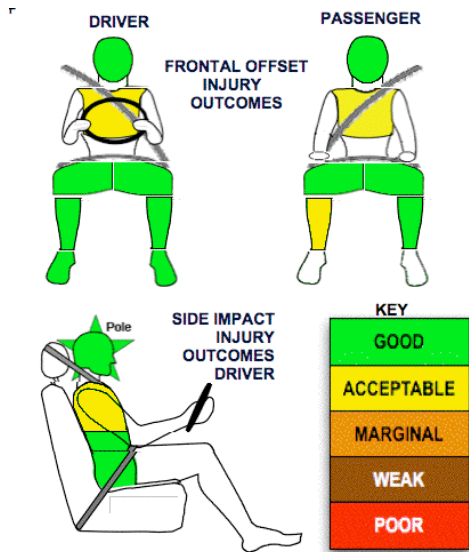
Dual front airbags and head/chest-protecting ("combo") side airbags are standard equipment on the Mk II Ute. Antilock brakes (ABS), electronic brakeforce distribution (EBD) and electronic stability control (ESC) are also standard. Intelligent seat belt reminders are fitted to both front seats. Several other safety features are incorporated in the Intelligent Safety System.

Pretensioners are fitted to the seat belts to reduce slack in the event of a crash.

OCCUPANT PROTECTION: 5 Stars

The Falcon Ute scored 14.62 out of 16 in the offset crash test. The passenger compartment was in excellent shape after the test. There was a slight risk of serious chest injury for the driver and passenger and a slight risk of serious lower leg injury for the passenger.

The vehicle scored 15.96 out of 16 in the side impact crash test. There was a slight risk of serious chest injury for the driver. A further two points were scored in the pole test.



Whiplash Protection



November 2011

PO Box 4041

Manuka ACT 2603

falcute11.doc

Issued 29/11/2011



TECHNICAL DATA - FORD FALCON UTE (FG Mk II) - From 2011

INJURY MEASUREMENTS

Body region	Offset Crash Test at 64km/h (v4.1)		Side Impact Crash Test at 50km/h (v4.2)
	Driver	Passenger	Driver
Head HIC	219	292	198
Acceleration (g for 3ms)	37.8	45.7	62.4
Neck - Shear (kN)	0.39	0.35	-
Tension (kN)	1.55	1.11	-
Extension (Nm)	22.4	14.8	-
Chest Accln (g for 3ms)	34.300	38.300	-
Compression (mm)	30.72	22.80	22.2
Viscous criterion (m/s)	0.16	0.10	0.27
Abdomen - Force (kN)	-	-	0.94
Pelvis - Force (kN)	-	-	1.950
Upper legs Force (kN)			
Left	0.97	0.28	
Right	0.17	1.83	
Knee displ (mm)			
Left	0.47	0.22	
Right	0.04	1.87	
Lower legs Force (kN)			
Left	1.92	1.45	
Right	1.64	1.42	
Index (Upper/Low)			
Left	0.39 /0.32	0.34 /0.16	
Right	0.31 /0.37	0.3/0.43	

Bonus points (maximum 5)

Pole Test: 2 points

Seat belt reminders: 2 (see table below for details)

Modifiers - deductions from offset test scores

Head	No deduction
Chest	No deduction
Upper leg Variable & conc. loading	No deduction@
Lower leg	No deduction
Foot score	Score 4 points

Notes: Steering column and pedal movements are measured relative to the driver's seat.

@ 2 point deduction for left leg where the transmission control is on the steering column.

Modifiers - deductions from side impact test scores

Chest	No deduction
-------	--------------

Safety features (Mk II, late 2011)

These specifications are subject to change. Please check with manufacturer for the latest specifications.

Driver airbag	S	Antilock (ABS) brakes / Electronic brakeforce distribution / Emergency Brake Assist	S/S/S
Passenger front airbag	S	Electronic stability control (ESC, VSC, DSC, ESP, VSA)	S#
Side airbags, front seats - chest protection	S	3 point centre rear seat belt	NA
Side airbags, front seats - head protection	S	Whiplash protection (RCAR protocol)	Good
Side airbags, rear seats - head protection	NA	Intelligent seat belt reminder - driver	S
Driver knee airbag	X	Intelligent seat belt reminder - front passenger	S
Seat belt pretensioners (Front/rear outboard)	S/ NA	Rear seat belt status indicator	N/A

Key:

S = standard on all variants

O = optional on base variant. May be standard on higher variants

V= not available on base variant but standard or optional on higher variants

X = not available on any variant NA = not applicable

ESC required by ANCAP for 5 star rating from 2008

