

ANCAP Safety Rating

HONDA ACCORD (From June 2013)



ANCAP
Safety ★★★★★

Test Vehicle(s).

Variant:	Honda Accord VTi
Kerb Mass:	1580 kg
Built:	2013
Engine:	2.4 petrol
Category:	Medium Car
Variant Applicability*:	All variants



Frontal offset test at 64 km/h

Airbags	ESC	Frontal Offset	Side Impact	Pole	Whiplash	Pedestrian	Seat Belt Reminders	Overall Score	ANCAP Safety Rating
Frontal + Side + Head	Standard	11.21 (out of 16)	16.00 (out of 16)	N/A	[PENDING]	ACCEPTABLE	2 (out of 3)	29.21 (out of 37)	★★★★★

The Honda Accord was introduced in Australia and New Zealand in mid 2013. This ANCAP safety rating applies to all variants (4cyl and V6). Dual frontal, side chest and side head airbags (curtains) are standard. Antilock brakes (ABS), electronic brake distribution (EBD) and electronic stability control (ESC) are also standard. Many other safety features are also available. Advanced seat belt reminders are fitted to both front seats.

In the frontal offset crash test, driver chest protection was acceptable, leg protection was marginal and foot protection was acceptable; passenger chest and leg protection was acceptable. In the side impact test all driver injury measurements were good.

OCCUPANT PROTECTION

Frontal Offset Test.

Each body region is scored out of 4 points

Head / neck:	4.00 points
Chest:	2.84 points
Upper legs:	4.00 points
Lower legs:	0.38 points

The passenger compartment held its shape well. Park brake pedal movement was excessive.

Side Impact Test.

Each body region is scored out of 4 points

Head:	4.00 points
Chest:	4.00 points
Abdomen:	4.00 points
Pelvis:	4.00 points

Good protection was provided for the driver in the side impact test. The side airbags performed well.

Pole Test.

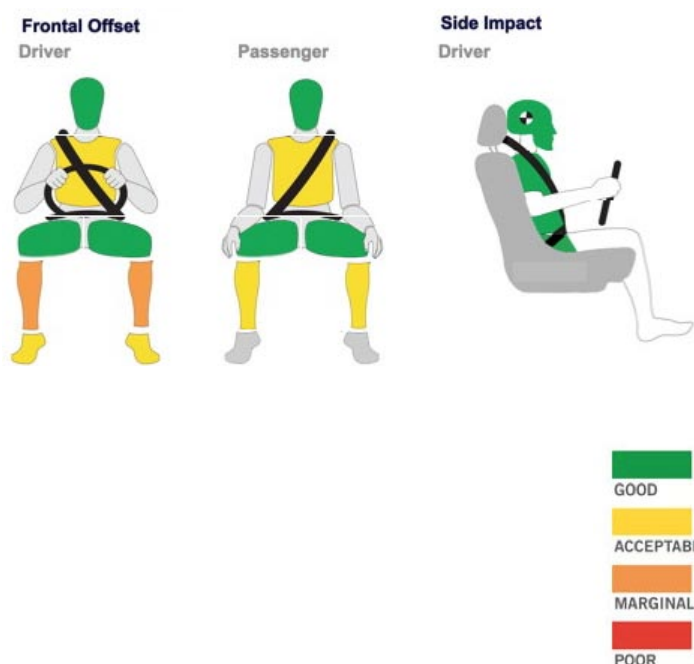
Not tested.

Whiplash Protection Test.

Whiplash protection is assessed to the RCAR Protocol

Geometric test:	[PENDING]
Dynamic test:	[PENDING]

Injury Outcomes.



ANCAP Safety Rating

HONDA ACCORD (From June 2013)



PEDESTRIAN PROTECTION

Pedestrian Test.

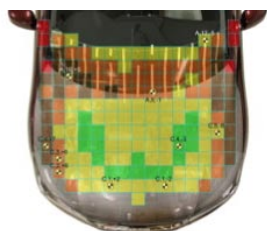
Acceptable - Scored 20.35 out of 36 points

Child head impacts: 8.82 points
 Adult head impacts: 7.52 points
 Upper leg impacts: 0.00 points
 Lower leg impacts: 4.00 points

The bonnet offered reasonable protection for adult and child head impacts, although some areas could be improved. Upper leg protection was poor. Lower leg protection was mixed with some regions of the bumper poor and other regions good.

Child and adult head impact

Adult leg impact
(upper and full legforms)



Honda Accord

SAFETY FEATURES

These specifications are subject to change. Please check with manufacturer for the latest specifications. For a description of these safety features and safety rating requirements see the ANCAP Road Map.

Safety Assist Technology (SAT)	Availability
Front airbag - driver	S
Front airbag - passenger	S
Side airbags (chest protection) - front seats	S
Side airbags (head protection) - front seats	S
Side airbags (head protection) - 2nd row seats	S
Knee airbag - driver	X
Three-point seat belts for all forward facing seats	S
Seat belt pretensioners (front / rear outboard)	S / X
Intelligent seat belt reminder - driver	S
Intelligent seat belt reminder - front passenger	S
Intelligent seat belt reminder - 2nd row seats	X
Head restraints for all seats	S
Antilock brakes (ABS)	S
Electronic brake distribution (EBD)	S
Emergency brake assist (EBA)	S
Electronic stability control (ESC)	S
Adaptive cruise control (ACC)	V
Autonomous emergency braking (AEB)	V
Lane support system	V
Pre-crash systems	V
Adaptive front lighting systems	S
Automatic headlights	S
Automatic high beam	S
Daytime running lights	S
Emergency stop signal	S
Hill-launch assist	S

Safety Assist Technology (SAT)	Availability
Reversing collision avoidance system	S
Trailer stability control	S
Tyre pressure monitoring	S

S = Standard on all variants.
 O = Optional on base variant. May be standard on higher variants.
 V = Not available on base variant but standard or optional on higher variants.
 X = Not available on any variant.

INJURY MEASUREMENTS

Body Region	Frontal offset test at 64 km/h (v5.1)		Side impact test at 50 km/h (v5.1)
	Driver	Passenger	Driver
Head			
HIC	474.00	403.00	51.00
Acceleration (g for 3ms)	63.70	49.40	22.40
Neck			
Shear (kN)	0.95	0.60	-
Tension (kN)	0.91	0.80	-
Extension (Nm)	22.30	6.50	-
Chest			
Acceleration (g for 3ms)			-
Compression (mm)	30.15	24.21	14.10
Viscous criterion (m/s)	0.19	0.06	0.05
Abdomen			
Force (kN)	-	-	0.85
Pelvis			
Force (kN)	-	-	1.72
Upper legs			
Femur force left (kN)	0.28	0.36	
Femur force right (kN)	0.33	2.02	
Knee displacement left (mm)	0.35	0.41	
Knee displacement right (mm)	0.47	2.69	
Lower legs			
Force left (kN)	1.71	2.70	
Force right (kN)	1.81	2.75	
Index (upper / lower) left	0.55 / 0.66	0.28 / 0.20	
Index (upper / lower) right	0.34 / 0.99	0.42 / 0.25	

INTRUSION MEASUREMENTS

Steering Column

Forwards:	32mm
Upwards:	17mm
Sideways:	0mm

Pedals

Park brake (rearwards):	120mm
Park brake (upwards):	106mm
A-Pillar (rearwards):	10mm

Note: Steering column and pedal movements are measured relative to the driver's seat.

SCORE DEDUCTIONS

Deductions from frontal offset test scores

Excessive park pedal vertical movement:	1 point from lower leg score
Excessive park pedal rearward movement:	0.8 points from foot score
Blocked park pedal:	0.506 points from foot score

Deductions from side impact test score

No deductions for side impact test.

Deductions from pole test score

No pole test conducted.

* For information about the application of ANCAP ratings to model variants see the ANCAP Variant Policy. In brief, ratings do not automatically extend to variants that have different body styles, engine configurations, driven wheels or occupant restraint systems (e.g. fewer airbags). In these cases ANCAP considers technical evidence submitted by manufacturers before deciding on extending a rating to additional variants of a model.

^ Refer ANCAP Rating Road Map (www.ancap.com.au/media).

DOCUMENT REF: ACCORD13
 CREATED / REVISED: 13/8/2013