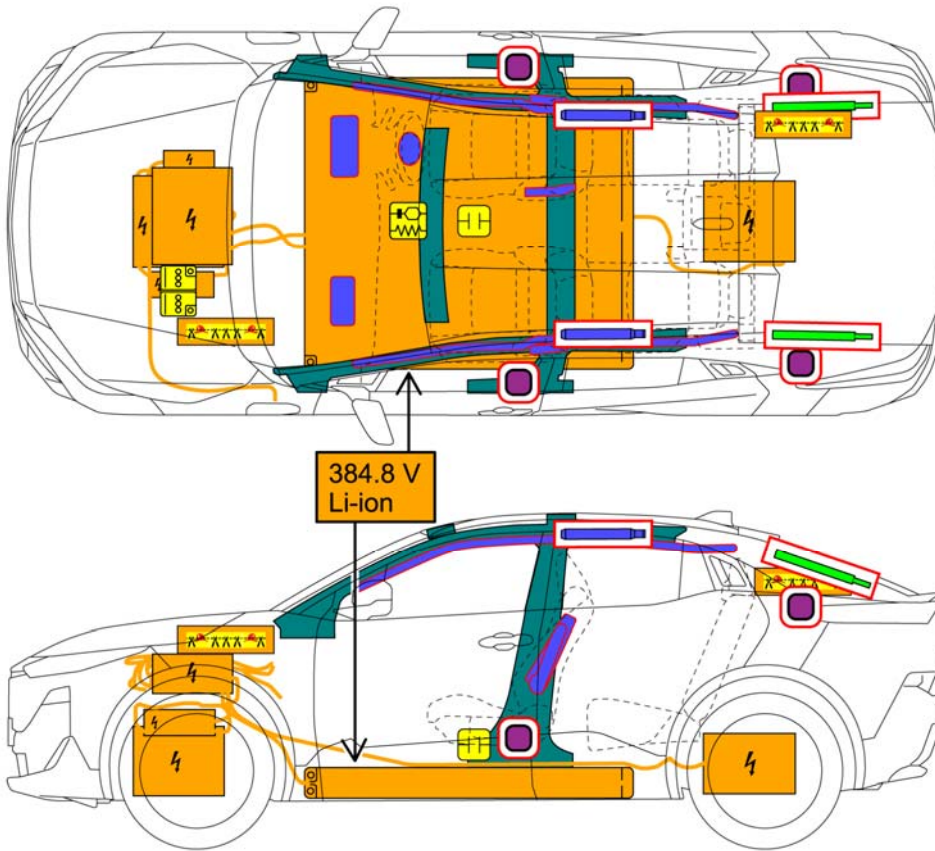




SUBARU UNCHARTED
5-Door SUV
2025-12



	Airbag		Stored gas inflator		Seat belt pretensioner		SRS control unit		Gas strut / Preloaded spring
	High strength zone		Battery low voltage		Ultra-capacitor, low-voltage		Battery pack, high-voltage		High voltage power cable
	High voltage component		Cable cut						
	ID No.	Version No.	Version date	Page					
	UNCHARTED10	01	12 / 2025	1 / 4					

1. Identification / Recognition



SILENT MOVEMENT OR INSTANT RESTART CAPABILITY EXISTS UNTIL VEHICLE IS FULLY SHUT DOWN.

Location of vehicle badges

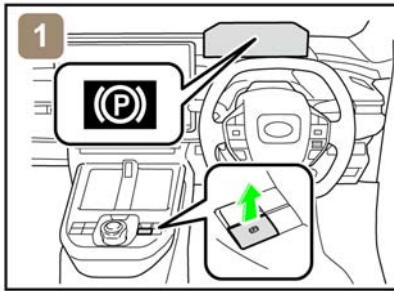


Energy source: Lithium-ion battery

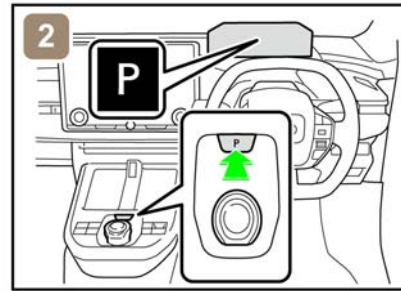


2. Immobilisation / Stabilisation / Lifting

Completely immobilize the vehicle



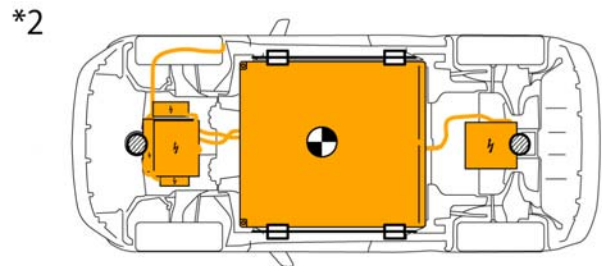
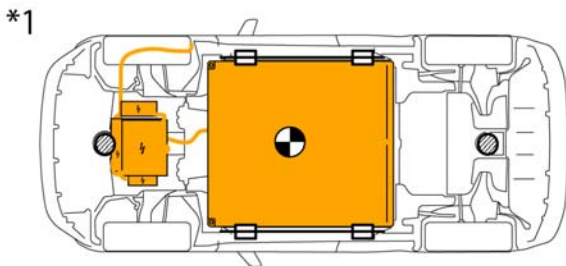
1) Chock the wheels and engage the parking brake.



2) Press the P position switch.

Stabilisation-lifting point

Place cribbing such as wooden blocks at the four points under the front and rear pillars.



Extra Reinforced Lifting Points



Standard Jack Locations



Vehicle Center of Gravity

*1: 2WD

*2: 4WD



DO NOT PLACE CRIBBING SUCH AS WOODEN BLOCKS OR RESCUE AIR LIFTING BAGS UNDER THE HIGH VOLTAGE POWER CABLES. DOING SO MAY RESULT IN FIRE OR ELECTRIC SHOCK.

	ID No.	Version No.	Version date	Page
	UNCHARTED10	01	12 / 2025	2 / 4

3. Disable direct hazards / Safety regulations

■ If any of the following systems are required to be operated, operate them **BEFORE** disconnecting the battery.

Power door lock
Electric parking brake

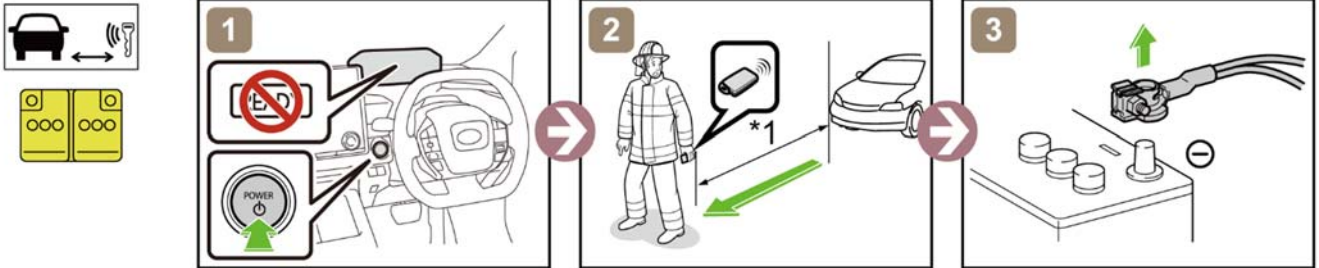
Power window
Power back door

Power seat
Electronic shift lever

When the 12 V battery is disconnected, electrical components cannot be operated.

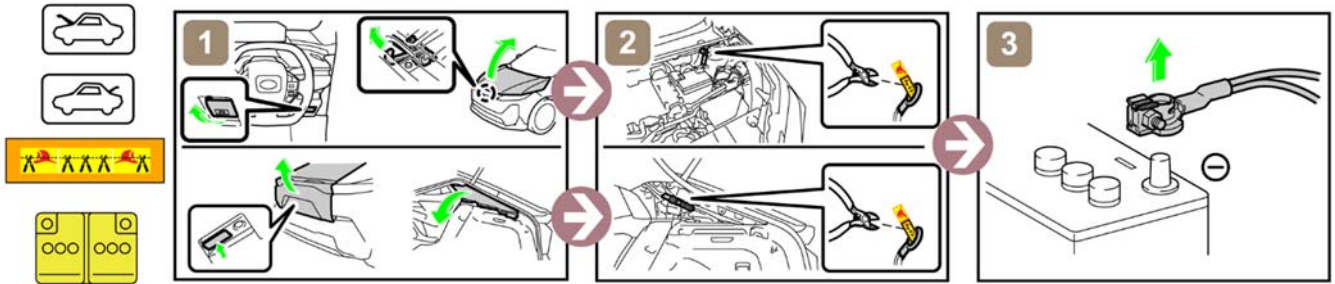
■ Perform procedure Main or Alternative to completely shut off the vehicle.

<Main Procedure>



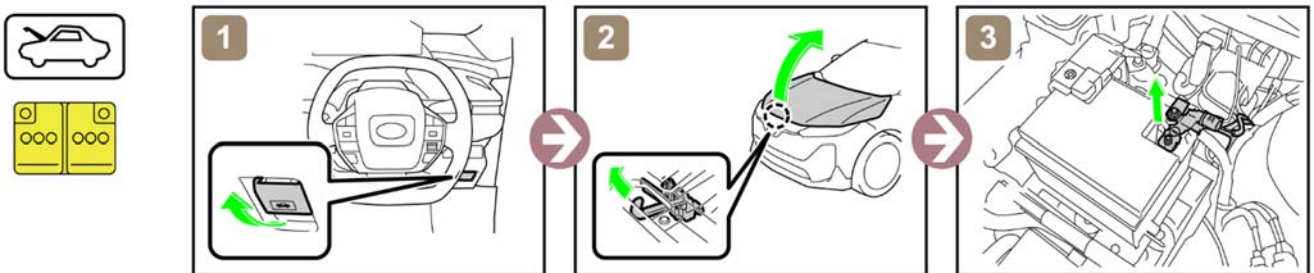
*1: 5 m (16.4 ft) or more

<Alternative Procedure>



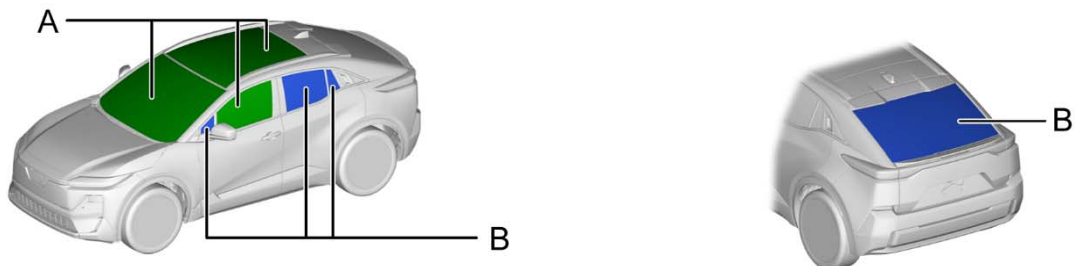
In the event of an accident in which the airbags are deployed, the high-voltage system will be automatically deactivated.

■ Access to 12 V Battery



4. Access to the occupants

■ Window Glass



A	Laminated	B	Tempered
---	-----------	---	----------

5. Stored energy / Liquids / Gases / Solids



High Voltage Li-ion Battery: 384.8 V



Low Voltage Battery: 12 V



Air Conditioner Refrigerant Gas



- ALWAYS WEAR APPROPRIATE PERSONAL PROTECTIVE EQUIPMENT (PPE) WHEN DEALING WITH ANY OF THESE ITEMS.
- NEVER BREACH OR REMOVE THE BATTERY ASSEMBLY COVER UNDER ANY CIRCUMSTANCES, INCLUDING FIRE. DOING SO MAY RESULT IN SERIOUS INJURY OR DEATH FROM SEVERE BURNS OR ELECTRIC SHOCK.

6. In case of fire



USE COPIOUS AMOUNTS OF WATER

If it is difficult to apply copious amounts of water to the high voltage battery, it is recommended to allow the high voltage battery to burn itself out.



RE-IGNITION POSSIBLE !



Gas strut / Preloaded spring

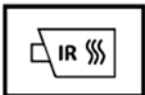
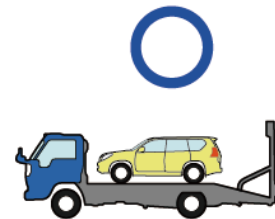
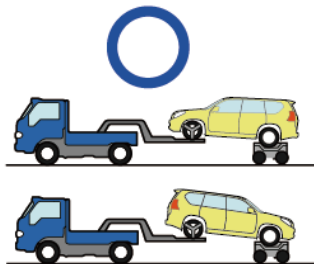
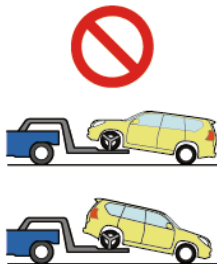
As it is possible for a gas strut / preloaded spring to become a projectile, refer to the component layout drawing.

7. In case of submersion



DO NOT TOUCH ANY OF THE HIGH-VOLTAGE COMPONENTS OR CABLES, INCLUDING THE SERVICE PLUG, WHILE THE VEHICLE IS SUBMERGED. DOING SO MAY RESULT IN ELECTRIC SHOCK. WORK ON THE VEHICLE ONLY AFTER THE VEHICLE HAS BEEN PULLED OUT OF THE WATER.

8. Towing / Transportation / Storage



RE-IGNITION POSSIBLE !

Store the vehicle at a safe distance (15 m (49.2 ft) or more) from other vehicles.

9. Important additional information

For further details, please refer to "Emergency Response Guide".

	ID No.	Version No.	Version date	Page
	UNCHARTED10	01	12 / 2025	4 / 4