

TOYOTA COROLLA

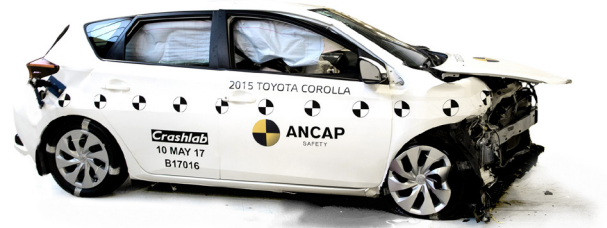
BUILT OCTOBER 2015



TESTED



PRE-CRASH



POST-CRASH

OVERVIEW

The ZRE180 series Toyota Corolla hatch was first introduced in Australia and New Zealand in October 2012 and remained in production as the 11th generation Corolla until 2018.

In 2012, ANCAP tested the ZRE180 series Toyota Corolla and awarded a 5 star ANCAP safety rating in accordance with 2012 protocols.

In 2017, ANCAP conducted a car-to-car test between the ZRE180 series (2015) Corolla and the AE100 series (1998) Corolla.

Dual frontal, side chest-protecting and side head-protecting (curtain) airbags and a driver knee airbag are standard. Front seats are fitted with seat belt pre-tensioners and load-limiters. Advanced seat belt reminders are fitted to all seats.

Electronic stability control (ESC), emergency brake assist (EBA), emergency brakeforce distribution (EBD) and anti-lock braking system (ABS) are standard equipment.

ANCAP SAFETY RATING

FIVE STARS

VEHICLE TYPE

Small Car

AIRBAGS

Dual frontal
Side chest
Side head
Knee

SCORE

12.93
OUT OF 16
POINTS

FRONTAL OFFSET TEST (64 KM/H)



Driver

Head / neck:	4.00 points
Chest:	4.00 points
Upper legs:	4.00 points
Lower legs:	0.93 points

The passenger compartment held its shape well in the car-to-car crash test. Dummy readings indicated GOOD protection offered to the head, neck, chest, upper legs and feet. ADEQUATE protection was offered to the driver's left lower leg. MARGINAL protection was offered to the driver's right lower leg.

Pedal and steering wheel displacements were well controlled. Driver and passenger contact with the airbags was stable. All doors remained closed during the crash. After the crash, all doors could be opened with normal effort.



RATING APPLICABILITY

VARIANT	BODY TYPE	ENGINE	DRIVETRAIN	AUS	NZ
Toyota Corolla ◆	5 door hatch	1.8 litre petrol	2WD	✓	✓

✓ COVERED BY THIS RATING ✗ NOT COVERED BY THIS RATING ◆ TESTED VARIANT

SAFETY FEATURES & TECHNOLOGIES

SAFETY FEATURES & TECHNOLOGIES	AVAILABILITY
Seat belts (three-point) for all forward-facing seats	●
Seat belt pre-tensioners (front)	●
Seat belt pre-tensioners (rear outboard)	✗
Intelligent seat belt reminder (driver)	●
Intelligent seat belt reminder (front passenger)	●
Intelligent seat belt reminder (2nd row seats)	●
Airbag - frontal (driver)	●
Airbag - frontal (passenger)	●
Airbags - side, chest protection (front seats)	●
Airbags - side, chest protection (2nd row seats)	✗
Airbags - side, head protection (front seats)	●
Airbags - side, head protection (2nd row seats)	●
Airbag - knee (driver)	●
Airbag - knee (front passenger)	✗
Head restraints for all seats	●
Adaptive cruise control (ACC)	✗
Adaptive headlights	✗
Anti-lock braking system (ABS)	●
Autonomous emergency braking (AEB) - City	✗
Autonomous emergency braking (AEB) - Interurban	✗
Autonomous emergency braking (AEB) - VRU	✗
Attention assist / fatigue reminder	✗
Automatic headlights	●
Automatic high beam	●
Blind spot monitor (BSM)	✗
Electronic brakeforce distribution (EBD)	●
Electronic stability control (ESC)	●
Emergency brake assist (EBA)	●
Emergency stop signal (ESS)	●
Lane support systems (LSS)	✗
Daytime running lights (DRL)	●
Hill launch assist	●
Reversing collision avoidance	●
Speed assistance - auto / intelligent speed limiter	✗
Speed assistance - manual speed limiter	✗
Speed assistance - speed sign recognition & warning	✗
Tyre pressure monitoring system (TPMS)	✗

~ Specifications & availability subject to change. Please check with the vehicle manufacturer for confirmation of vehicle specification.

- STANDARD
- NOT AVAILABLE ON BASE VARIANT BUT STANDARD OR OPTIONAL ON HIGHER VARIANTS
- OPTIONAL
- ✗ NOT AVAILABLE

MODEL VARIANTS:

ANCAP safety ratings do not automatically extend to variants that have different body styles, engine configurations, driven wheels or occupant restraint systems (e.g. fewer airbags). In these cases, ANCAP considers technical evidence submitted by manufacturers before deciding on the extension of a rating to additional variants of a model.

RATING YEAR (DATESTAMP):

The Rating Year denotes the year requirements against which a vehicle has been assessed. The Rating Year is determined by ANCAP and, for vehicles rated from 2018, the Rating Year is the year in which the vehicle was tested.

INJURY VALUES & MEASUREMENTS

BODY REGION	Frontal offset test at 64 km/h (v5.1)
	Driver
HEAD	
HIC	277
Acceleration (g for 3ms)	39.2
NECK	
Shear (kN)	0.29
Tension (kN)	1.55
Extension (Nm)	10.60
CHEST	
Acceleration (g for 3ms)	46.6
Compression (mm)	21.47
Viscous criterion (m/s)	0.08
UPPER LEGS	
Femur force left (kN)	1.65
Femur force right (kN)	2.32
Knee displacement left (mm)	2.32
Knee displacement right (mm)	0.94
LOWER LEGS	
Force left (kN)	3.24
Force right (kN)	5.29
Index (upper / lower) left	0.30 / 0.53
Index (upper / lower) right	0.76 / 1.09
INTRUSION MEASUREMENTS⁺	
STEERING COLUMN	
Forward (mm)	49
Upward (mm)	1
Sideways (mm)	12
PEDALS	
Accelerator - rearward (mm)	49
Brake - upward (mm)	23
A-PILLAR	
Rearward (mm)	24

+ Steering column and pedal movements are measured relative to the driver's seat.

ASSESSMENT DETAILS

TESTED MAKE / MODEL	TOYOTA COROLLA HATCH
TESTED VEHICLE(S) BUILT	October 2015
TESTED BODY TYPE	5 door hatch
TESTED VEHICLE ENGINE	1.8 litre petrol
RATING PUBLISHED	May 2017
RATING UPDATED	-