

Crash Test Results

New Car Safety

MERCEDES-BENZ B-CLASS

From 2012 Front+side+head+knee airbags



ANCAP Occupant Protection
Rated ★★★★★

Occupant Protection Score 36.78 out of 37

Variant: B200CDI Eng: 1.8 diesel
Kerb mass 1480 kg Category: CAR - MEDIUM
Vehicles built: 2011 Tested by Euro NCAP

Important note: The *diesel left-hand-drive* European model was tested by Euro NCAP. ANCAP was provided with technical data which showed that petrol variants of the B-Class provide comparable occupant protection.

Model History and Safety Features

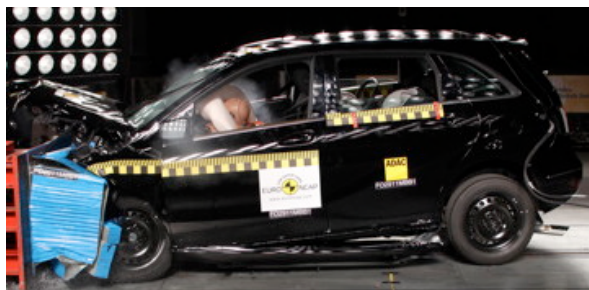
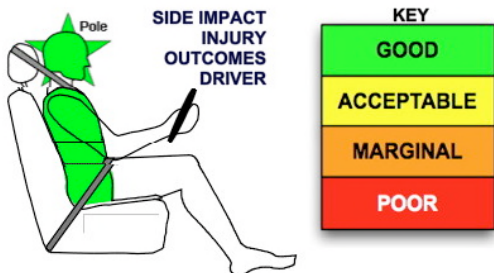
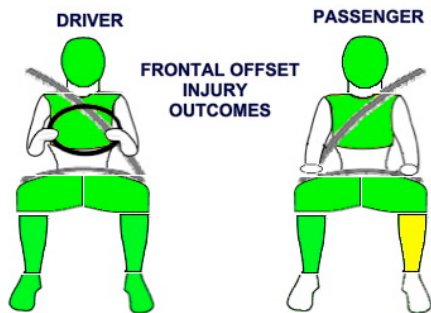
The tested model of Mercedes-Benz B-Class was introduced in Australia during 2012. This ANCAP rating applies to all variants.

Dual front airbags, side airbags and head-protecting side curtains are standard equipment. Antilock brakes (ABS), electronic brakeforce distribution (EBD) and electronic stability control (ESC) are also standard. Intelligent seat belt reminders are fitted to all front seats. Several other advanced safety features are available.

OCCUPANT PROTECTION: 5 Stars

The B-Class scored 15.78 out of 16 in the offset crash test. The passenger compartment held its shape well. There was a slight risk of serious leg injury for the passenger. All other injury values were good.

The vehicle scored 16 out of 16 in the side impact crash test and a further two points in the pole test.



Offset crash test at 64km/h

FRONTAL OFFSET CRASH TEST

Body region scores out of 4 points each: Head/neck 4 pts, chest 4 pts, upper legs 4 pts, lower legs 3.78 pts.

The passenger compartment held its shape well in the offset crash test. The clutch pedal moved rearwards by 58 mm. and upwards 21 mm. The steering wheel hub moved 74mm forward, 7mm downward and 2 mm sideways. The front ("A") pillar moved 4 mm rearwards. All doors remained closed during the crash. After the crash all doors could be opened with normal effort.

The airbag cushioned the head of the driver and contact was stable. There were no knee hazards. The passenger's head was cushioned by the airbag.

SIDE IMPACT CRASH TEST

Body region scores out of 4 points each: Head 4 pts, chest 4 pts, abdomen 4 pts, pelvis 4 pts.

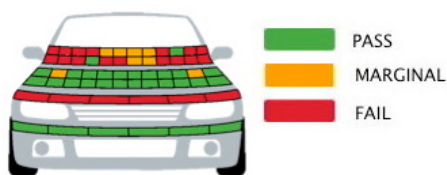
The vehicle was eligible for a pole impact test, since it had head-protecting side airbags. The vehicle earned the maximum two points in this test.

PEDESTRIAN PROTECTION: Acceptable

The bumper scored maximum points, providing good protection to pedestrians' legs in all areas tested. However, the front edge of the bonnet provided poor protection and scored no points. In most areas likely to be struck by the head of a child, the bonnet provided good protection but was predominantly poor in those areas where an adult's head might strike.

PEDESTRIAN PROTECTION	Child head impacts	11.56
ACCEPTABLE	Adult head impacts	2.56
	Upper leg impacts	Zero
	Lower leg impacts	6
	Total (out of 36)	20.12

Tested by Euro NCAP v5.3



MAY 2012

PO Box 4041
Manuka ACT 2603
b-class12.doc Rated: 2012
Issued 2/5/2012



ANCAP

Crash testing for safety
AUSTRALASIAN
NEW CAR ASSESSMENT
PROGRAM

TECHNICAL DATA - MERCEDES-BENZ B-CLASS - From 2012

INJURY MEASUREMENTS

Body region	Offset Crash Test at 64km/h (v5.2)		Side Impact Crash Test at 50km/h (v5.2)
	Driver	Passenger	Driver
Head HIC	277	353	44
Acceleration (g for 3ms)	42.5	46.2	21.9
Neck - Shear (kN)	0.55	0.89	-
Tension (kN)	1.56	0.55	-
Extension (Nm)	19.2	23.9	-
Chest Accln (g for 3ms)	-	-	-
Compression (mm)	18.80	16.23	18.44
Viscous criterion (m/s)	0.03	0.03	0.10
Abdomen - Force (kN)	-	-	0.540
Pelvis - Force (kN)	-	-	1.390
Upper legs Force (kN)			
Left	0.97	1.50	
Right	1.19	0.10	
Knee displ (mm)			
Left	0.90	0.00	
Right	1.60	0.00	
Lower legs Force (kN)			
Left	1.79	1.77	
Right	1.77	1.24	
Index (Upper/Low)			
Left	0.25 /0.13	0.45 /0.20	
Right	0.19 /0.15	0.34/0.19	

Bonus points (maximum 5)

Pole Test: 2 pts

Seat belt reminders: 3 (see table below for details)

Modifiers - deductions from offset test scores

Head	No deduction
Chest	No deduction
Upper leg	No deduction
Lower leg	No deduction
Foot score	Score 4 points

Modifiers - deductions from side impact test scores

Chest	No deduction
-------	--------------

Safety features

These specifications are subject to change. Please check with manufacturer for the latest specifications.



Driver airbag	S	Antilock (ABS) brakes / Electronic brake distribution / Brake Assist	S/S/S
Passenger front airbag	S	Electronic stability control (ESC, VSC, DSC, ESP, VSA)	S#
Side airbags, front seats - chest protection	S	3 point seat belt for all forward-facing seats	S
Side airbags, front seats - head protection	S	Whiplash protection (RCAR protocol)	Pending
Side airbags, rear seats - head protection		Intelligent seat belt reminder - driver	S
Driver knee airbag	S	Intelligent seat belt reminder - front passenger	S
Seat belt pretensioners (Front/Rear outboard)	S/X	Intelligent seat belt reminder - rear seats	S

Key:

S = standard on all variants

O = optional on base variant. May be standard on higher variants

V= not available on base variant but standard or optional on higher variants

X = not available on any variant

ESC required by ANCAP for 5 star rating from 2008