

# ANCAP Safety Rating: TOYOTA FORTUNER (August 2015 – onwards)



## This ANCAP safety rating applies to:

Make / Model	Toyota Fortuner
Year Range	August 2015 - onwards
Variant(s)*	All variants
Vehicle Type	Large SUV

ANCAP and ASEAN NCAP conducted crash tests on the Toyota Hilux utility. ANCAP was provided with evidence showing that the results apply to the Fortuner sports utility vehicle, which is based on the Hilux.

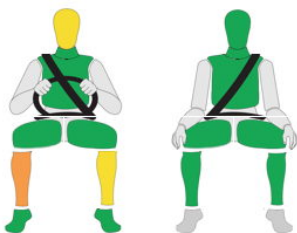
The Toyota Fortuner was released in Australia in October 2015 and New Zealand in January 2016. The ANCAP rating applies to all variants built from August 2015.

Dual frontal, side chest and side head airbags (curtains) and a driver knee airbag are standard. Electronic Brake Distribution (EBD) and Emergency Brake Assist (EBA) are also standard. Side head airbags (curtains) are standard for second and third row seats. Advanced seat belt reminders are fitted to front and second row seats. Third row seats do not have seat belt reminders.

## Injury Outcomes.

### Frontal Offset

Driver Passenger

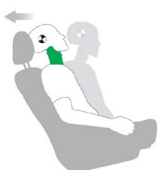


### Side Impact & Pole#



### Whiplash Protection

Driver



# Head protection only.

## Test Results Summary.

Airbags	Dual Frontal, Side, Head, Knee
Frontal Offset Test	13.45 (out of 16)
Side Impact Test	16.00 (out of 16)
Pole Test	2 (out of 2)
Whiplash Protection	Good
Pedestrian Protection	Good
ESC	Standard
Seat Belt Reminders	2.6 (out of 3)
Overall Score	34.05 (out of 37)
ANCAP Safety Rating	★★★★★
Rating Year <sup>^</sup>	2015

## Occupant Protection.

### Frontal Offset Test

Each body region is scored out of 4 points

Head / neck:	3.00 points
Chest:	4.00 points
Upper legs:	4.00 points
Lower legs:	2.45 points

The passenger compartment held its shape well in the offset test. Pedal and steering wheel displacements were well controlled. The driver's head made contact with the steering wheel through the airbag. All doors remained closed during the crash. After the crash all doors could be opened with normal effort.

### Side Impact Test

Each body region is scored out of 4 points

Head:	4.00 points
Chest:	4.00 points
Abdomen:	4.00 points
Pelvis:	4.00 points

The side impact test normally used by ANCAP simulates a small car striking the driver's door of the test vehicle. Experience shows that large vehicles like the Fortuner can be expected to perform well in this test. ANCAP has adopted a policy of awarding these types of vehicles a default score of 16 points (out of 16).

### Pole Test

Scored out of 2 points

Score:	2.00 points
--------	-------------

The vehicle was eligible for a side pole test because it has side curtain airbags. The vehicle scored the maximum 2 points for head protection in this test.

### Whiplash Protection Test

Whiplash protection is assessed to the RCAR Protocol

Geometric test:	Good
Dynamic test:	Good
Overall whiplash rating:	Good

# ANCAP Safety Rating: TOYOTA FORTUNER (August 2015 – onwards)



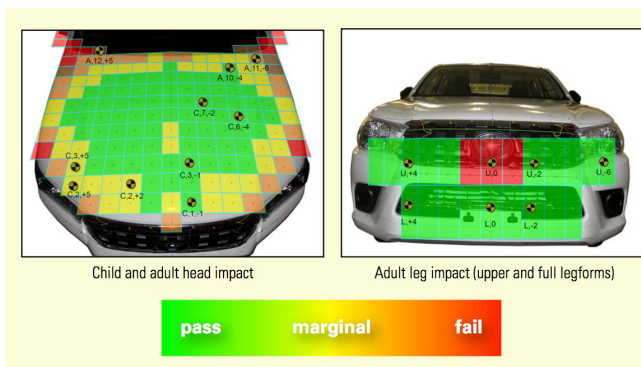
## Pedestrian Protection.

### Pedestrian Test

Scored out of 36 points

Adult & child head impacts: 19.55 points  
Upper leg impacts: 4.62 points  
Lower leg impacts: 6.00 points

This vehicle scored 30.17 out of 36 points (Good). While most locations on the bonnet and bumper provided good results, there were some poor results for the upper leg towards the centre of the bumper and towards the lower corner of the windscreen for head impacts. (v7)



## Score Deductions.

### Deductions from frontal offset test scores

Head / neck: Unstable airbag contact for driver: -1.00 point from head score.  
Chest: No deduction  
Upper legs: No deduction  
Lower legs: No deduction

### Deductions from side impact test score

No deductions (default score for high-seat vehicle).

### Deductions from pole test score

Head: No deductions.

## Other

Independent assessment has shown that the 2015 ANCAP Safety Rating of this vehicle only is retained when the following Toyota Genuine Accessories are fitted:

### Premium Steel Bullbar Part No.:

- PZQ2989295 / PZQ2989296
- PZQ2989335 / PZQ2989336
- PZQ29-89365 / PZQ29-89366

### Alloy Bullbar Part No.:

- PZQ2989415 / PZQ2989416
- PZQ2989315 / PZQ2989316
- PZQ2989445 / PZQ2989446
- PZQ2989345 / PZQ2989346
- PZQ2989420 / PZQ2989421
- PZQ2989320 / PZQ2989321

ANCAP was provided with information to show that, with a Toyota steel bullbar fitted, the pedestrian protection rating drops to "acceptable". While this is still adequate for a 5-star safety rating the fitting of rigid metal bullbars does increase the serious injury risk for struck pedestrians, compared to vehicles without the bullbar fitted.

## Safety Features & Technologies.

Descriptions of each of these safety features and safety assist technologies (SAT) and detail on fitting requirements for each star rating level can be found at [ancap.com.au](http://ancap.com.au).

Safety Feature / Safety Assist Technology	Availability
Seat belts (three-point) for all forward-facing seats	S
Seat belt pretensioners (front)	S
Seat belt pretensioners (rear outboard)	X
Intelligent seat belt reminder (driver)	S
Intelligent seat belt reminder (front passenger)	S
Intelligent seat belt reminder (2 <sup>nd</sup> row fixed seats)	S
Intelligent seat belt reminder (3 <sup>rd</sup> row fixed seats)	X
Airbag - Front (driver)	S
Airbag - Front (passenger)	S
Airbag - Side, chest protection (front seats)	S
Airbag - Side, chest protection (2 <sup>nd</sup> row seats)	X
Airbag - Side, head protection (front seats)	S
Airbag - Side, head protection (2 <sup>nd</sup> row seats)	S
Airbag - Side, head protection (3 <sup>rd</sup> row seats)	S
Airbag - Knee (driver)	S
Airbag - Knee (front passenger)	X
Head restraints for all seats	S
Adaptive cruise control (ACC)	X
Antilock braking system (ABS)	S
Automatic headlights	S
Autonomous emergency braking (AEB)	X
Daytime running lights (DRL)	V
Electronic brakeforce distribution (EBD)	S
Electronic stability control (ESC)	S
Electronic stop signal (ESS)	S
Emergency brake assist (EBA)	S
Hill launch assist	S
Lane support system (LSS)	X
Reversing collision avoidance	S
Top-tether anchorages	S
Trailer stability control	S
Tyre pressure monitoring system (TPMS)	X

These specifications are subject to change. Please check with the manufacturer for the latest specifications.

- S** = Standard on all variants.
- O** = Optional on base variant. May be standard on higher variants.
- V** = Not available on base variant but standard or optional on higher variants.
- X** = Not available on any variant.
- E** = Available in Europe / USA but not available on any Australasian variant.

# ANCAP Safety Rating: TOYOTA FORTUNER (August 2015 – onwards)



## Injury Values & Measurements.

Body Region	Frontal offset test at 64 km/h (v5.1)		Side impact test at 50 km/h (v5.1)
	Driver	Passenger	Driver
<b>Head</b>			HIGH-SEAT VEHICLE DEFAULT SCORE AWARDED
HIC	607.00	524.00	
Acceleration (g for 3ms)	63.10	55.90	
<b>Neck</b>			
Shear (kN)	0.87	0.63	
Tension (kN)	1.39	0.47	
Extension (Nm)	13.00	13.0	
<b>Chest</b>			
Acceleration (g for 3ms)	-	-	
Compression (mm)	21.52	19.50	
Viscous criterion (m/s)	0.07	0.04	
<b>Abdomen</b>			
Force (kN)	-	-	
<b>Pelvis</b>			
Force (kN)	-	-	
<b>Upper legs</b>			
Femur force left (kN)	1.38	0.18	
Femur force right (kN)	1.04	2.88	
Knee displacement left (mm)		0.04	
Knee displacement right (mm)	0.95	0.75	
<b>Lower legs</b>			
Force left (kN)	2.92	1.70	
Force right (kN)	4.33	1.95	
Index (upper / lower) left	0.41 / 0.31	0.30 / 0.16	
Index (upper / lower) right	0.68 / 0.33	0.34 / 0.36	
<b>Intrusion Measurements*</b>			
<b>Steering column</b>			
Forward (mm)	38		
Downward (mm)	6		
Sideways (mm)	9		
<b>Pedals</b>			
Accelerator - rearward (mm)	73		
Accelerator - downward (mm)	6		
<b>A-Pillar</b>			
Rearward (mm)	-4		

\* ANCAP safety ratings do not automatically extend to variants that have different body styles, engine configurations, driven wheels or occupant restraint systems (e.g. fewer airbags). In these cases, ANCAP considers technical evidence submitted by manufacturers before deciding on extending a rating to additional variants of a model. For further information about the application of ANCAP safety ratings to model variants, see the ANCAP Variant Policy.

^ The Rating Year denotes the year requirements against which a vehicle has been assessed. The Rating Year is determined by ANCAP and may be based on the year in which a new vehicle model is first launched into the Australian and/or New Zealand markets; the year in which the vehicle was tested (if tested by Euro NCAP); or, for vehicles which hold an existing ANCAP safety rating, the year in which the rating was updated (or earlier applicable year).

### Assessment Details.

Tested Make / Model	Hilux Double Cab 4x4 Pick-Up
Tested Vehicle(s) Built	2015
Tested Body Type	Utility
Tested Vehicle Kerb Weight	2090 kg
Tested Vehicle Engine	2.8 litre turbo diesel
Tested By	ANCAP / ASEAN NCAP
Assessed By	ANCAP
Document created/revised	9 October 2015
Document Reference	FORTUNER15
Rating Published	October 2015
Rating Updated	February 2019



Frontal Offset test at 64km/h (Toyota Hilux tested)